

'AA' bantams continue to struggle

Goals and victories has been tough to come by this season for Milton's AA bantams.

Continuing to struggle offensively, the Hunt Chrysler Jeep Winterhawks scored just four times in their past three games — resulting in a tie and two losses.

Their non-defeat came Sunday against Brampton, with James Woodcroft leading with a goal and an assist in a 2-2 stalemate.

Also scoring was Matt Fratarcangeli, who was the lone marksman in both Saturday's 5-1 setback to Ancaster and Monday's 6-1 loss to Flamborough.

Drawing assists over this winless stretch — which followed a 3-2 decision over Caledon, Milton's only victory thus far in league play — were Ryan Cochrane, Jordan Haggart, Tyler LaFontaine and Wade McGinnis.

Rep Hockey

Major peewees triumph

Milton's additional entry peewees flexed their scoring muscles to remain unbeaten on home ice — upstaging Elora 7-4 Saturday afternoon at Milton Sports Centre.

Reliable gunners Sachin Ghai and Jordan Dias fueled the victory party with a combined seven points. Ghai had two goals and two assists, while Dias had a goal and a pair of helpers.

Each counted an unassisted tally into the mix.

Andrew Boivin contributed a goal and an assist, while also denting the twine were Jake Cochrane and Brandan Farrell.

Backstopping the Gorrud's Auto Group Winterhawks was Brandon Grant.

Minor atoms squeak by

There's nothing quite like leaving things to the last minute to create a little excitement.

Milton's AA minor atoms did just that at home Tuesday night, as Tyler Ganly scored with just 56 seconds remaining to pull out a 6-5 win over Orangeville.

The victory — which lifted the Winterhawks to 4-4 in league play — came in large part to solid defensive play from Evan Rudd and Jonathon Piché.

Gareth Browne notched a huge solo-effort tally — beating two defensemen in the process — to highlight offensive efforts for the hosts, who squandered an early three goal lead before finally vanquishing Orangeville.

Burrell enjoying hockey, scenic wonder in Banff

By STEVE LeBLANC
The Champion

Kyle Burrell has scored his fair share of pretty goals, and is now doing so in one of the prettiest spots in the country.

Taking his game west this fall, the 19-year-old right winger originally set out to play Jr. A hockey in Canmore, Alberta. While not quite making the cut, Burrell impressed the Eagles coach enough to get recommended for the Jr. B Banff Icemen — part of the internationally-recognized Banff Hockey Academy.

As the Icemen's oldest player, the Milton teen is among the few not in school this season. But with teammates from across the globe — including England, Scotland, Austria and Australia — he's still getting an education of sorts.

"Yeah, we're definitely learning something about the different places we're all from," said Burrell, who has a cousin in Banff. "It's pretty interesting."

On the ice, Banff isn't exactly enjoy-

ing the type of success its new winger's use to — having captured OMHA gold with the 2001/02 AA midgets and then back-to-back Niagara District titles with the local juveniles.

In fact, the Icemen haven't won since Burrell joined the team for its home opener October 15, dropping their fourth straight game Sunday afternoon with a 7-6 loss to Rimbey.

But Milton's sniper has made his presence felt in short order, scoring 11 minutes into his Jr. B debut and adding two goals and a pair of helpers over the next three games — recording one of each Sunday.

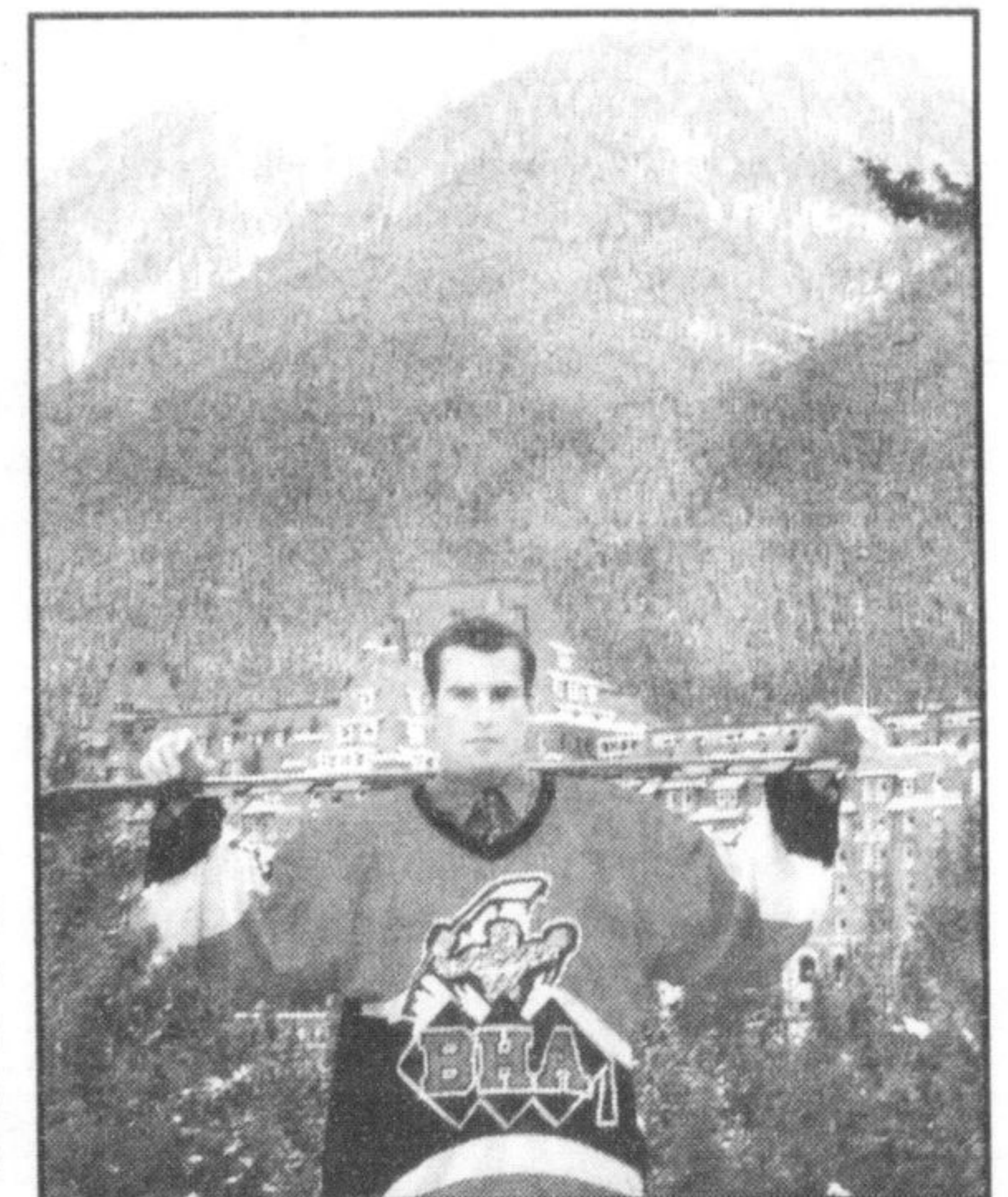
"Kyle reads the play very well and is a great addition to the team," said Iceman head coach Lawrence Sacharuk. "If he continues to improve each week, I'd say he's got more of a chance than not a chance (of landing a scholarship)."

Burrell should be a little clearer on that matter this time next month, following a trip to Boston for the North East Hockey Showcase — where about two dozen teams will vie for the attention of NCAA scouts, as well as tournament bragging rights.

"It's a big opportunity," noted Burrell. "I've had a couple of partial scholarship offers before, but nothing too appealing."

Speaking of appealing, Banff's picturesque surroundings are certainly an off-ice bonus for the first-time junior player — who when he's not playing or practising works as a bellman at a nearby travel lodge.

"The scenery's amazing. Every morning I wake up and look out at a huge mountain. What could be better?"



Kyle Burrell has been enjoying this type of view every day since joining the Banff Hockey Academy.

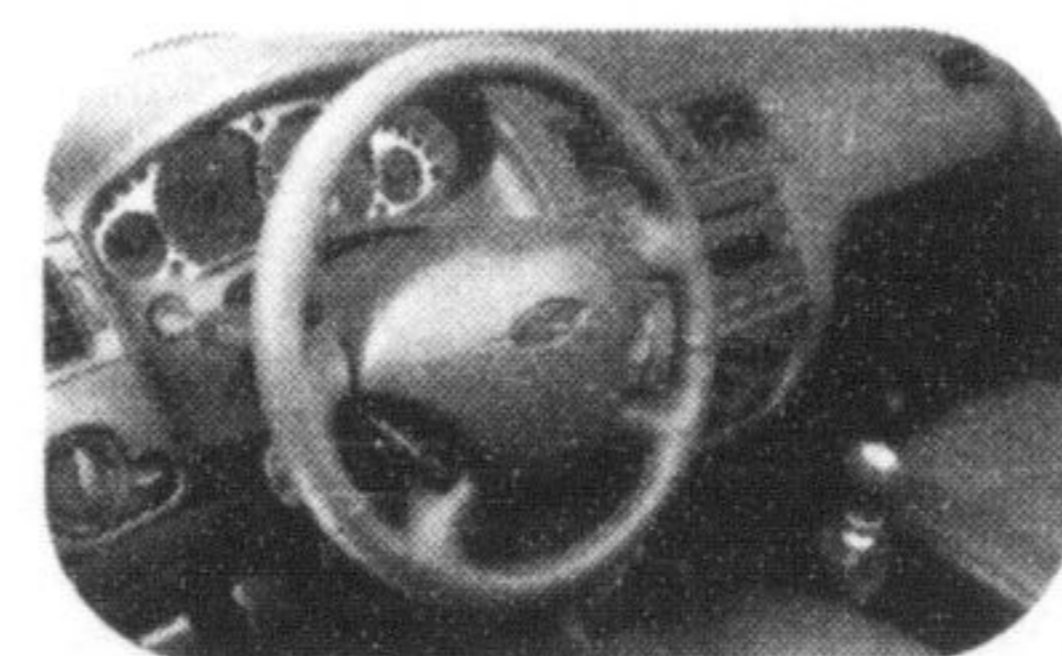
BUILT FOR CORNERS, CURVES AND STRAIGHTAWAYS.



2005
FOCUS



Car and Driver's 10Best
5 years running†



2005 Ford Focus ZX4 SE

LEASE FOR

\$188* PER MONTH/ 36 MONTHS
WITH \$1,995 DOWN
\$0 SECURITY DEPOSIT

OR CASH PURCHASE FOR

\$15,398**

Plus no extra charge **Canadian Winter Package:** • Heated Power Side Mirrors • Heated Front Seats



2005 Ford Focus ZX5 SES

LEASE FOR

\$208* PER MONTH/ 36 MONTHS
WITH \$1,995 DOWN
\$0 SECURITY DEPOSIT

ZX5 includes **Canadian Winter Package Plus:**

- Heated Power Side Mirrors
- All-speed Traction Control
- Heated Front Seats • 4-Wheel ABS



2005 Ford Focus ZXW SE

LEASE FOR

\$228* PER MONTH/ 36 MONTHS
WITH \$1,995 DOWN
\$0 SECURITY DEPOSIT

Plus no extra charge **Canadian Winter Package:**

- Heated Power Side Mirrors
- Heated Front Seats

WE KEEP THINKING ABOUT CORNERS BECAUSE WE WANT YOU TO DRIVE A FORD.

ONLY AT YOUR ONTARIO FORD STORE.



ford.ca

Built for life in Ontario

We believe... in helping. Anyone. Anywhere.



PLEASE GIVE 1-888-321-3433

Milton Speed Skating OPEN HOUSE

Thursday November 4, 2004

7 - 8 pm

Tonelli Sport Centre - (217 Laurier Avenue)

Various sizes of skates will be available for all ages to experience this fast and fun activity.

905-319-2764 or

miltonspeedskating@hotmail.com

GO FAST & HAVE FUN



WISER BUYERS READ THE LEGAL COPY: *Lease a new 2005 Ford Focus ZX4 SE/Focus ZX5 SES/Focus ZXW SE for \$188/\$208/\$228 per month based on an annual lease rate of 0.9%/0.9%/1.9% and a 36 month lease from Ford Credit to qualified retail lessees, on approved credit. Total lease obligation is \$8,763/\$9,463/\$10,203. First month's payment and \$1,995/\$1,995/\$1,995 down payment or equivalent trade required. Rental Security may be required by Ford Credit based upon customer credit terms and conditions. Some conditions and a mileage restriction of 60,000 km over 36 months apply. A charge of 8 cents per km over mileage restriction applies, plus applicable taxes. **Cash Purchase a new 2005 Ford Focus ZX4 SE for \$15,398 including \$1,800 Factory to Dealer Credit (FTDC) and \$1,000 Bonus Cash. Taxes payable on full amount of cash purchase price before Bonus Cash and after FTDC is deducted. Offers exclude freight (\$950), license, insurance, administration fees and all applicable taxes. †2004 Focus, Car and Driver's 10Best 2000-2004. Images are for illustration purposes only. Some conditions may apply to the Graduate Recognition program. Limited time offers. Offers may be cancelled at any time without notice. Unless specifically stated, all offers are mutually exclusive and cannot be combined. See Dealer for details. Dealer may lease for less. Ontario FDA, P.O. Box 2000, Oakville, Ontario L6J 5E4