

**Community Guide 2002**

*Your opportunity to be a part of the Milton Community Guide 2004*

**Unique Frame + Art**  
SAVE 50% ON PICTURE FRAMES

*Please call Joice at 905-878-2341 to advertise in this annual directory.*

**The Canadian Champion**

**The Milton Champion Community Guide is your information source for Milton.**

The guide is published once a year and is delivered to 18,755 households within Milton, Campbellville and Hornby.

This invaluable directory includes community, health and government services, schools, sports, interests and services clubs. Specialty pages for shopping, restaurants, pet care and home improvement are also included.

**Attention Service Clubs & Organizations:**

To update your contact information and book your advertising space, please call Joice at 905-878-2341 or email jschofield@miltoncanadianchampion.com

or you can fill out the form below and forward it to the Champion, 191 Main St. E.,

Organization: \_\_\_\_\_

Contact Name & Address: \_\_\_\_\_

\_\_\_\_\_

\_\_\_\_\_

Phone: \_\_\_\_\_

**FUTURE SHOP CORRECTION NOTICE**

Product: Mercury 128MB MP3 Player 10047151. This product is incorrectly advertised on pg. 14 of our October 22nd flyer as a player with an FM tuner. This model does not feature an FM tuner. As a result, we will offer interested customers the Curtis 228 model with FM tuner (10042747) at the special price of \$109.99 after a \$20 savings.

*We sincerely apologize for any inconvenience this may have caused our valued customers.*

**OPEN HOUSES**

**SATURDAY, OCTOBER 23**

1:30-4 pm, 30 Heslop #23, \$179,900  
Adina Nonis, Royal LePage 905-878-8101

2-4 pm, 238 Galbraith Blvd.  
Teresa Mills-Hall, ReMax Blue Springs 905-878-7777

**SUNDAY, OCTOBER 24**

2-4 pm, 30 Heslop #23, \$179,900  
Adina Nonis, Royal LePage 905-878-8101

2-4 pm, 280 Pettigrew Trail, \$249,900  
Karen Cumby, Royal LePage 905-878-8101

2-4 pm, 290 Randall Cres., \$419,000  
Barb Crowe, Royal LePage 905-878-8101

2-4 pm, 3001 Purdy Dr., \$789,900  
Verge Cabral, ReMax Blue Springs 905-878-7777

1-4 pm, 1226 Brook Dr., \$374,900  
Barb King, ReMax Blue Springs 905-878-7777

2-4 pm, 25 Roberts Dr.  
Theresa Keates, ReMax Blue Springs 905-878-7777

2-4 pm, 12065 First Line, Moffat, \$699,900  
Fran Goodkey, Commonwealth Real Estate Services 905-876-0460

2-4 pm, 14 Coates Dr., \$254,900  
Susan Recoskie, Royal LePage 905-878-8101

2-4 pm, 1607 Waldie Ave., \$312,900  
Eva Gooding, Royal LePage 905-878-8101

2-4 pm, 157 Fitzgerald Cres., \$374,900  
Kim Scott, Royal LePage 905-878-8101

2-4 pm, 379 Pine St., \$475,900  
Joyce Hagevik, Royal LePage 905-878-8101

2-4 pm, 36 Mary St., \$429,000  
Diane Maynard, Royal LePage 905-878-8101

2-4 pm, 1155 Davis Lane, \$277,900  
Audrey Newell, Coldwell Banker 905-878-4444

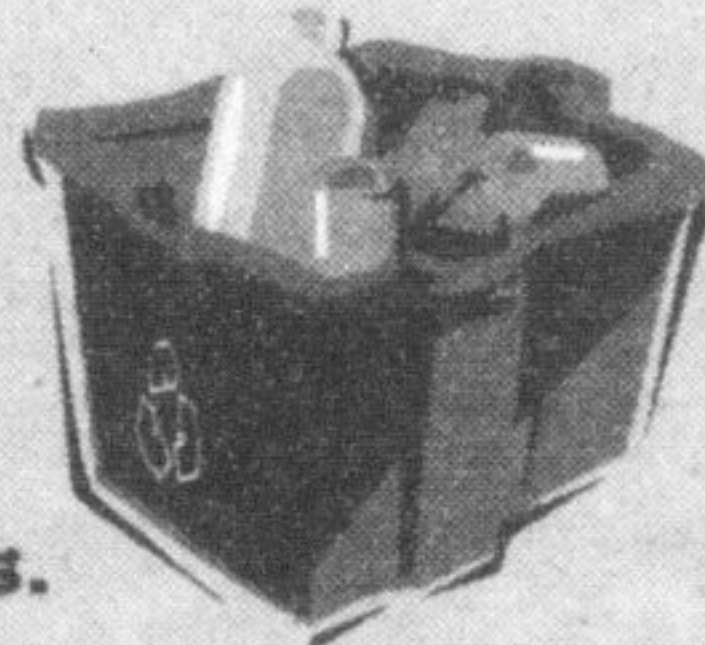
**The Regional Municipality of Halton**  
A Partnership That Works!



**Halton's Blue Box Program**

**BLUE BOX 1**

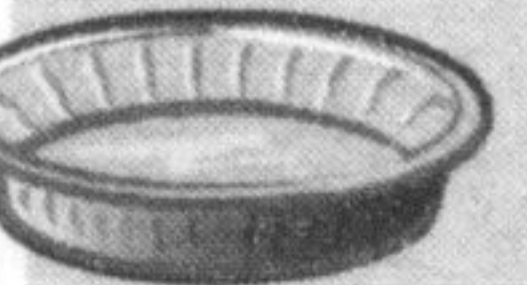
Place the items listed below loose IN your Blue Box, and ensure that they are clean and free of food and grease residues.



**Polycoat** (juice boxes/Tetra Pak® and gable top containers such as milk and juice cartons)



**Glass Bottles and Jars** (clear or coloured, food and beverage)



**Metal Food and Beverage Containers** (steel and aluminum)



**Aluminum Foil** (foil, plates and containers)



**"Styrofoam" or Polystyrene** (packaging foam, cups, plates, etc.)



**Plastic Bottles** (PET HDPE only) (water, juice, beverage, detergent, bleach, etc.)

**BLUE BOX 2**

Place the items listed below in a separate BLUE BOX, or BUNDLED and tied, or in a suitable sized container.



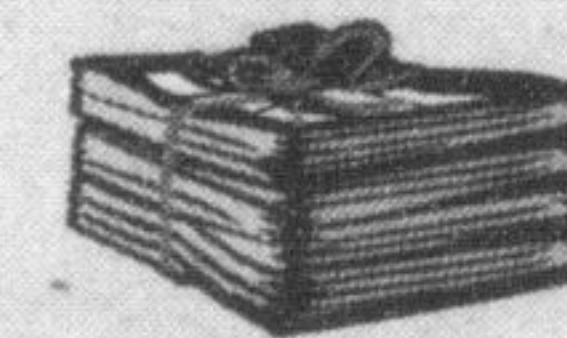
**Corrugated Cardboard** (tie in bundles no larger than 76 cm x 76 cm x 20 cm (30" x 30" x 8") and place beside blue box)

**Fine Paper** (computer paper, writing paper, envelopes, etc.)

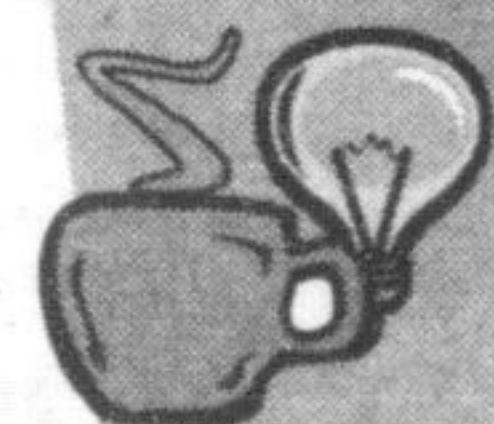


**Boxboard** (cereal, detergent, tissue, etc. Flatten and bundle with corrugated cardboard or place loose in your Blue Box)

**Newspapers** (include inserts, magazines, catalogues, telephone books, hard and soft covered books)



**Do Not Recycle The Following Items:**



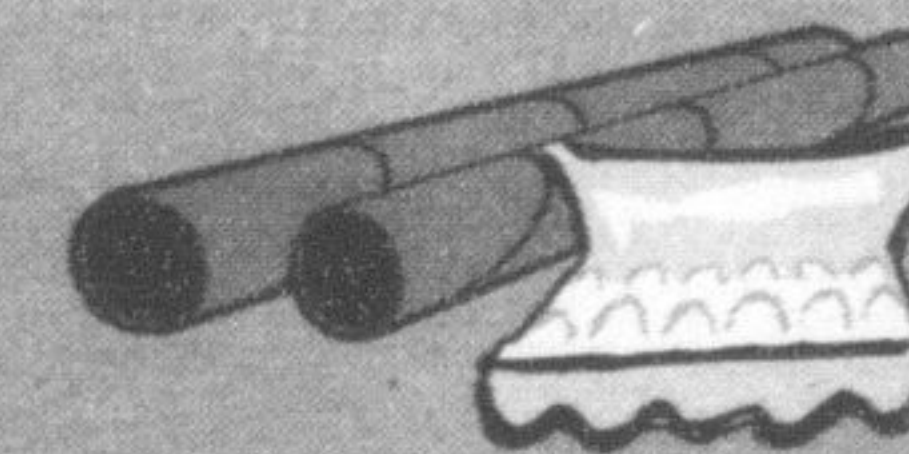
No lightbulbs, ceramics, window glass or drinking glasses

No aerosol cans



Do not place your recyclable material in shopping bags

No cardboard tubes, egg cartons, take-out containers, wax coated boxes



**To help prevent litter on windy days:**

- Place your Blue Box out on the morning of collection day by 7:00 a.m., instead of the night before.
- Stack your Blue Boxes on top of one another with heavier items on top.
- Do not overload your Blue Box, use additional containers.

**Note:**

Blue Boxes are available at the Halton Regional Centre, the Halton Waste Management Site and at the Halton Hills Public Works Yard.

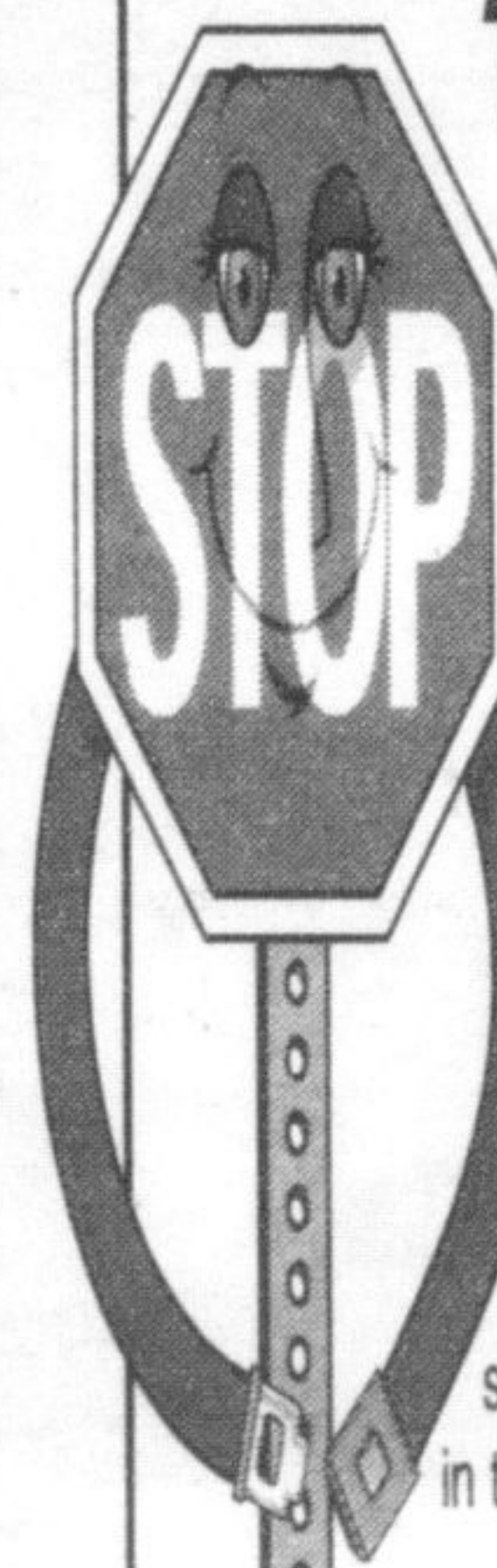
Space provided through the Canadian Newspaper Association and Ontario Community Newspaper Association and their members as part of Stewardship Ontario's Blue Box Program in co-operation with Waste Diversion Ontario.

1151 Bronte Road, Oakville, ON L6M 3L1  
905-825-6000 Toll free: 1-866-4HALTON (1-866-442-5866) TTY: 905-827-9833  
or visit us at: www.region.halton.on.ca

**SECURE THE FUTURE**

**FOR YOUR CHILD**

**...Use Restraint Every Time You Drive!**



Here are just a few lifesaving tips all parents should know about the correct way to use child restraints.

**Take A Back Seat**

It's the safest place in a crash, and if your car has a passenger air bag, it is essential that children under 12 ride in the back.

**Do An About Face**

Babies up to one year (up to 20 lbs) should ride in a car seat facing the rear, in the back seat.

**Keep a Tight Rein**

When installing a car seat, make sure your car's safety belt stays tight around the safety seat. Harness straps go over the child's shoulder and should be adjusted so that you can slip only one finger underneath the straps at your child's chest.

**Don't Slouch On Safety**

Generally, children up to 40 lbs. should remain in a car seat. After that, a booster seat may be used along with the car's safety restraint system. The lap belt should fit tight across the upper thighs, the shoulder belt over the shoulder and across the chest.