


**FIRST AID**  
 Canadian Red Cross  
 People who take first aid training reduce their personal injuries by up to 30%.



# Dateline

• from **DATELINE** on page 12  
 speaker begins at 8:15 p.m. For tickets, call Judie Preston at (905) 845-2862 or Barry Wylie at (905) 827-6302.

The **Milton Historical Society** meets at 7:30 p.m. at the Waldie Carriage Shop, 16 James St., with author Fawne Stratford-Devai discussing the 'The

British Home Children/Child Immigration Movement between 1868 and the 1930s'.  
 A **Buddhist meditation and philoso-**

**phy course** entitled 'When Things go Wrong' takes place at the Milton Seniors' Activity Centre, 500 Childs Dr., from 7:30 to 9 p.m. The cost is \$10 per class. No pre-registration is required. For more information, call (905) 523-9533.

Milton District Hospital holds a **breast-feeding clinic** with a certified lactation consultant from 7 to 9 p.m. For more information or to make an appointment, call Jean Gallen at (905) 878-2383, ext. 7030.

The Fine Arts Society of Milton's **Evening Group of Artists** meets from 7 to 10 p.m. at the Milton Mall, upper level. The informal environment provides artists with an opportunity to exercise their drawing skills. For more information, call (905) 854-5753.

The Women's Centre, 210-1515 Rebecca St. in Oakville, holds its **Women's Employment Network** for women who are unemployed, laid off or returning to the workforce, from 9:30 to 11:30 a.m. Topics include writing resumés, job search strategies and dressing for success. It also holds a seminar entitled **Personality Dimensions** from 6:30 to 9:30 p.m. Discover preferred behaviours and ways of thinking, and learn to reduce stress and conflict. The cost is \$10. To register or for more information, call (905) 847-5520.

The Milton Seniors' Activity Centre, 500 Childs Dr., holds **contract bridge** at 1:30 p.m. The cost is \$2 for members and \$4 for non-members. The free **Walking Club** meets at the centre at 10 a.m. and car pools to its destination. **Bid euchre** is held at 1:30 p.m. New players are welcome. The cost is \$2 for members and \$4 for non-members. A **foot care clinic** takes place in the afternoon, performed by a VON nurse by appointment. The cost is \$22. **Seniors' Cinemas** is held at 1:30 p.m. featuring the action/drama *Against the Ropes*. The cost is \$2, which includes refreshments. **Circle of Support**, a free eight-week grief support group for people coping with the death of a loved one, takes place from 7 to 8:30 p.m. To make an appointment for the foot care clinic or for more information on the activities, call (905) 875-1681. For information on the Circle of Support, call the above number at extension 2753.

• see more **DATELINE** on page 21

## TAKE THE BUILT TWO YEAR TEST DRIVE

### TOUGH Ford TOUGH

**Brand New!**



**2005 F150 4X4 Supercab XLT**  
 4.6L, V8, auto, A/C, P/W, P/L, spd control & tilt, trailer tow pkg., electric shift 4x4, cloth captain's chairs, two-tone paint, keyless entry, dark grey & silver ext. St.F5015

\$2000 Down  
**\$459\*** Per Month  
 / 24 Months

**24 MONTH LEASE ADVANTAGE**

**ENJOY DRIVING A NEW VEHICLE IN 2 YEARS**

**FORD GUARANTEES THE BUY-BACK PRICE**

**MINIMIZE FINANCIAL COMMITMENT**

**Freight & Air Tax Included**

**Brand New!**



**2005 F150 4X4 Supercrew XLT**  
 5.4L, V8, auto, A/C, P/W, P/L, spd control & tilt, trailer tow pkg., running boards, alum wheels, cloth captains chairs, keyless entry, sliding rear window, power adj. pedals, Arizona beige ext. St#F5027

\$2000 Down  
**\$465\*** Per Month  
 / 24 Months

**Brand New!**



**2005 F250 4X4 Supercab XLT**  
 5.4L V8, auto, A/C, P/W, P/L, spd control & tilt, all-terrain tires, tubular cab steps, sliding rear window, FX4 pkg. AM/FM/6-disc CD changer, two tone paint, door mouldings, electric shift 4x4, black & Arizona beige ext. St#F5014

\$2000 Down  
**\$489\*** Per Month  
 / 24 Months

**Brand New!**



**2005 F350 4x4 Crewcab Lariat Dual Wheels**  
 6.0L Diesel, auto, A/C, P/W, P/L, spd control & tilt, King ranch pkg., p. moonroof, electric shift 4x4, limited slip axle, p. sliding rear window, cab steps, quad leather captains chairs, two tone paint, dark copper & Arizona beige ext.F5003

\$2000 Down  
**\$699\*** Per Month  
 / 24 Months

**Arriving Soon...**

2005 Ford Five Hundred



2005 Ford Freestyle



**Arriving next month...**

2005 Ford Mustang



\* Freight & Air tax included, applicable taxes & lic extra, red carpet lease, 24 months, 20,000kpy, limited time offer, O.A.C. See dealer for details.

# GALLINGER

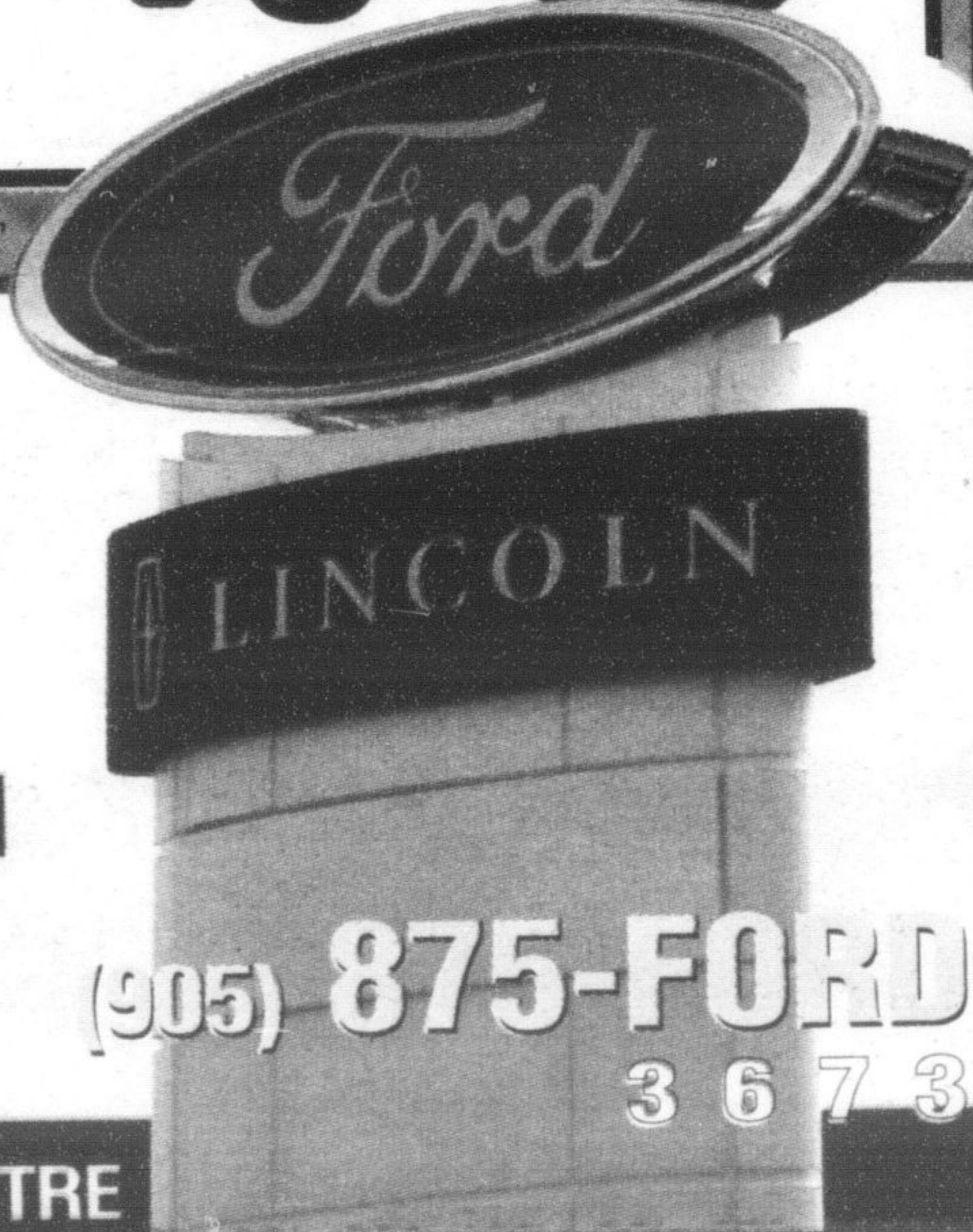
## FORD LINCOLN

655 MAIN STREET EAST. MILTON

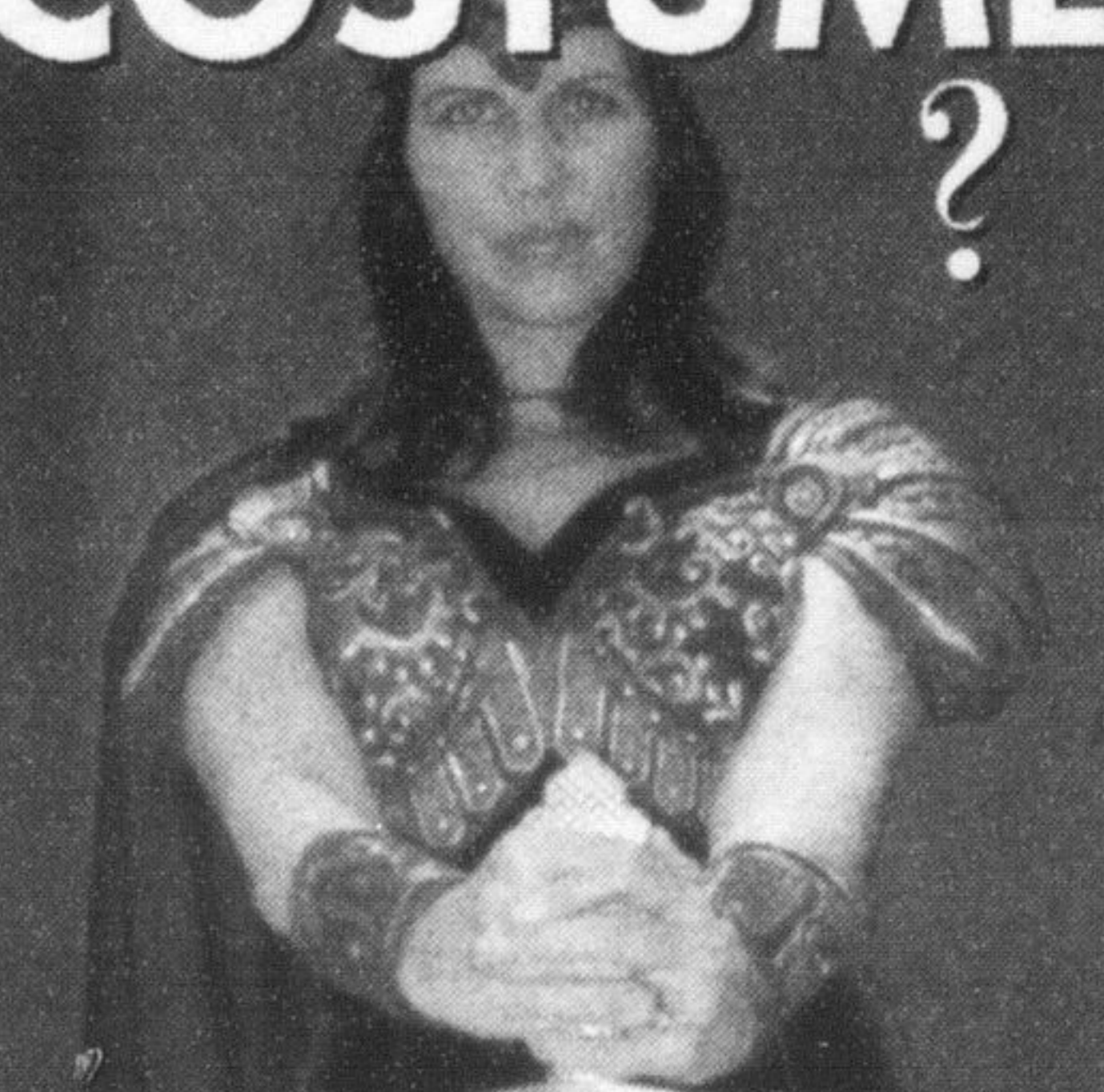
[www.gallingerford.com](http://www.gallingerford.com)

A Tradition of Value & Trust since 1967

SALES • LEASING • SERVICE • PARTS • COLLISION CENTRE



Need A **COSTUME** ?



Call **905.878.1504**  
 Or Visit

**MARCUCCI**  
**Costume Studios**

885 Main St. E Milton  
 at the corner of Main St. & Thompson Rd.  
[www.MarcucciStudios.com](http://www.MarcucciStudios.com)