

WE'VE GONE BATTY!

Scrapbook Crazy's MOVING SALE!



*20-50% off all

in-stock items

sale ends November 6th/04

Watch for our **GRAND RE-OPENING** on **Sat. Nov. 13th** at our **NEW LOCATION**
352 Queen St. East, Acton

20 MILL ST. E., ACTON 519-853-2401

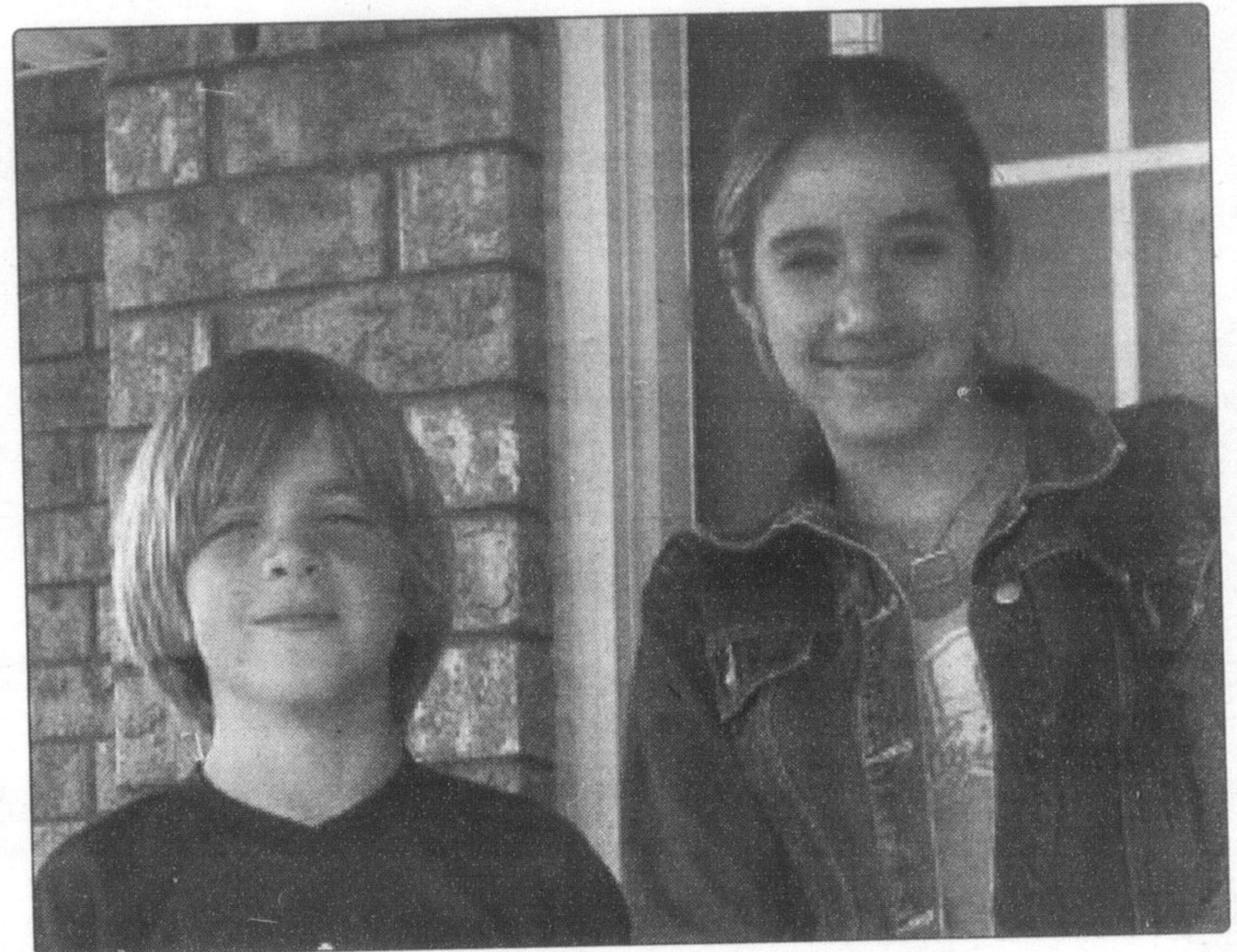
PHONE ORDERS ARE ACCEPTED.



We Are Not Affiliated With Creative Memories



Congratulations!! Haley & Matthew



HALEY AND MATTHEW ARE CARRIERS OF THE MONTH FOR SEPTEMBER.

Haley and Matthew started delivering the Champion 6 months ago. They won a Champion t-shirt and a Subway Kids Pack, from Subway on Market Street. Matthew is saving his Carrier points for a Playstation 2, and Haley would like a digital camera. Thanks to you both for your hard work.

If you would like to become a Canadian Champion Carrier and start earning points towards great prizes, call us at 905-878-5947.

2004 FINAL CLEAR OUT



2004 Sonata GL
MSRP \$22,395**

0% Purchase Financing†
up to 6 years!

\$209 per month/60 mos.
\$3,595 DOWN PAYMENT \$0 SECURITY DEPOSIT

CANADA'S BEST WARRANTY

7 year/120,000 km Powertrain Warranty

5 year/100,000 km Comprehensive Limited Warranty

5 year/100,000 km Roadside Assistance Program †

All Hyundai warranties have no deductible.

†Includes fuel delivery service, flat tire changing, lock-out service, towing service and more. Just one toll-free call away, 24 hours a day.

When you build them better, you can back them better.

*Leasing program available from Hyundai Financial Services based on new 2004 Accent GS/Santa Fe/Sonata GL MSRP from \$13,295/\$21,095/\$22,395 annual interest rate of 0.37%/3.28%/0.48%, \$149/\$199/\$209 per month for a 60/60 month walkaway lease. Total lease obligation of \$9,735/\$14,935/\$16,135 and optional purchase price of \$3,359/\$8,332/\$6,564. Down payment of \$795/\$2,995/\$3,595 plus first monthly payment required. \$0 security deposit on all models. 2004 Accent GS lease price calculated after deduction from MSRP of \$1,100 wholesale lease credit (wholesale lease credit available on advertised Accent GS/Comfort models only). Freight and P.D.E. for Accent included, extra for Santa Fe & Sonata. All applicable taxes, license and \$350 lease acquisition fee extra. 20,000 km allowance per year applies. Additional charge of \$0.10/km. **2004 Accent GS/Santa Fe/Sonata/Tiburon MSRP from \$13,295/\$21,095/\$22,395/\$20,495. All MSRP prices exclude freight, license, P.D.E. and all applicable taxes. Dealer may sell for less. CASH PURCHASE PRICE FOR 2004 TIBURON \$16,495. \$4,000 manufacturer's retailer credit is reflected in the cash purchase price shown in this advertisement. †0% purchase financing available for up to 72 month terms on 2004 Sonata GL 1.4 only & all Accent models. 0% purchase financing available for up to 48 months on Santa Fe GL. Financing example: \$10,000 at 0% per annum equals \$138.39/\$208.33 per month for 72/48 months. C.O.B. is \$0.0 for a total obligation of \$10,000.00. By selecting the advertised 2004 Accent GS/Comfort purchase financing offer over lease, consumers are forgoing the factoring financing available for up to 48 months on Santa Fe GL. Financing example: \$10,000 at 0% per annum equals \$138.39/\$208.33 per month for 72/48 months. C.O.B. is \$0.0 for a total obligation of \$10,000.00. All purchase and lease offers are for a limited time, D.A.C. and may not be combined with any other offer. See dealer for details. Offer ends September 30, 2004. †wholesale lease credit. If \$1100/\$500 credit was applied to 2004 Accent GS/Comfort financing offer effective annual interest rate would be 2.88%/1.14% over 72 months.

HYUNDAI OF OAKVILLE



2004 Santa Fe GL
MSRP \$21,095**



0% Purchase Financing†
up to 4 years!

Lease from **\$199**
per month/60 mos.

\$2,995 DOWN PAYMENT, \$0 SECURITY DEPOSIT

1071 Speers Road
(Just west of 4th Line)

905-845-7791

www.hyundaiofokville.com

Hamilton	OW	Toronto
Third Line	Speers	4th Line
		Dorval
	Lakeshore	

HYUNDAI

Hyundai OF OAKVILLE

Pre-Owned Car Showcase

2000 SONATA GL V6



\$10,888
FROM
Auto, Air, Power Group, Cassette, Alloy
Wheels, 3 to choose from. 68K

2000-2003 ACCENT GL



\$8,995
FROM
5-spd., Auto, Air, PW, PDL, PM, CD,
From 42K. 5 to choose from.

2000-2003 ACCENT GS



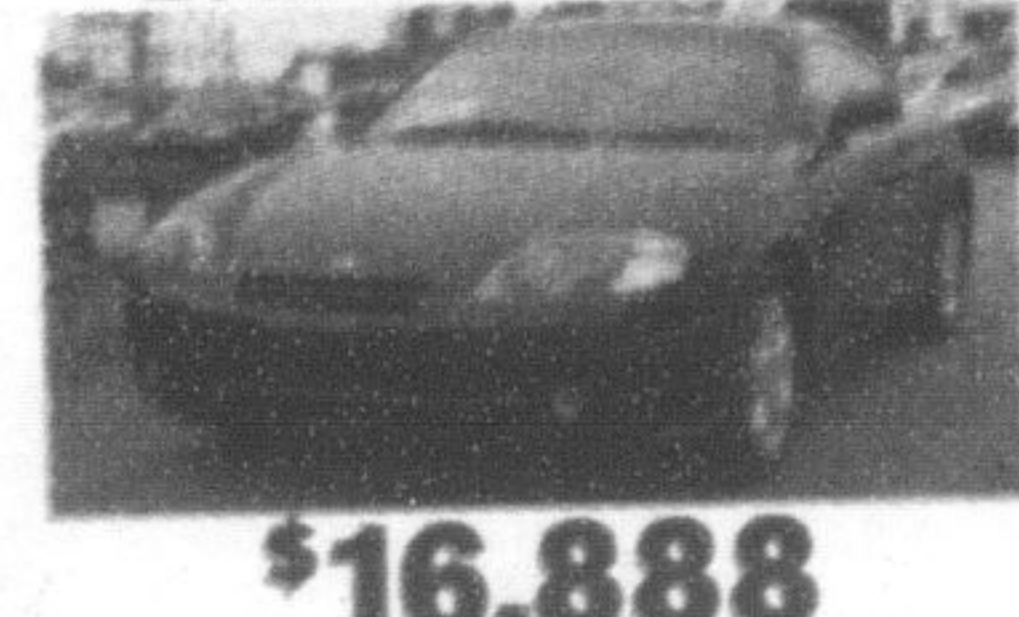
\$5,995
STARTING FROM
5-spd., Automatic. From 61K.
Some with A/C. 10 to choose from.

2001 SANTA FE GL



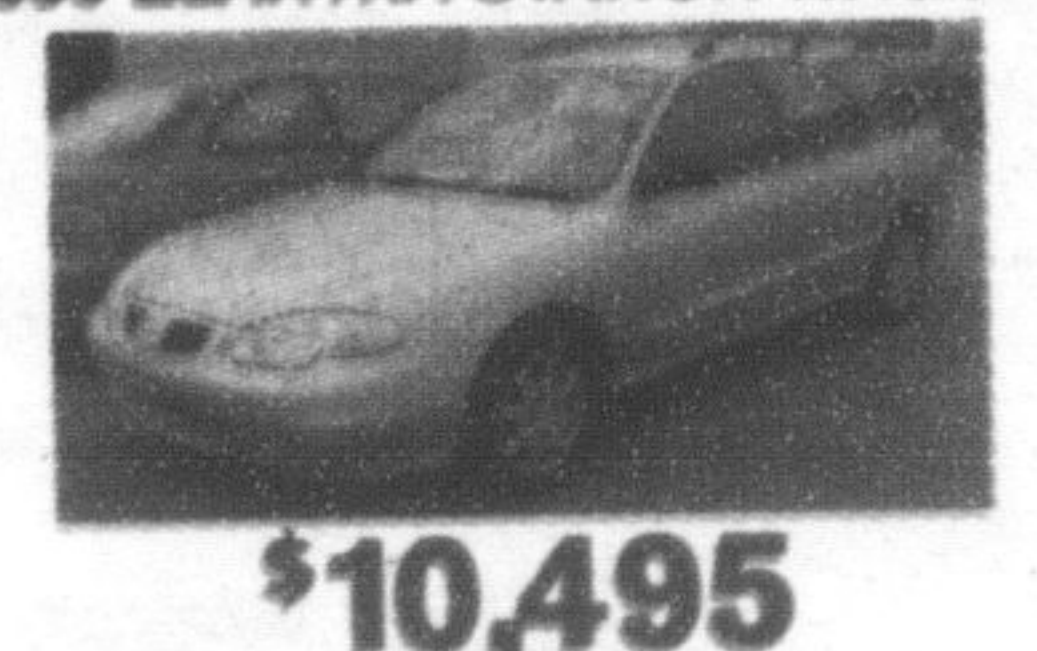
\$18,888
Auto, air, CD, power group, keyless
remote entry, alloy wheels. 66K. #U4247

2003 TIBURON SE



\$16,888
Auto, Air, CD, PW, PDL, PM, S/Roof, Rear
Spoiler, Alloy Wheels, Low, low K. 20 only.

2000 ELANTRA STATION WAGON



\$10,495
Auto, air, cassette, low, low km.
only 42K. #U4350