

Cycling committee may be formed by Halton Region

By **MELANIE HENNESSEY**

The Champion

The Region is making plans to establish a cycling committee that's mandate would be to promote, facilitate, educate and encourage increased cycling throughout Halton.

The committee, which is subject to 2005 budget approval, would consist of eight citizens, two from each municipality, and non-voting representatives from the Halton Regional Police Service, the Region's planning and transportation services department and the Halton health department.

Four regional councillors, one from each municipality, would also be on the committee — Allan Elgar (Oakville), Jack Dennison (Burlington), Jane Fogal (Halton Hills) and Barry Lee (Milton).



A report from Commissioner of Planning and Public Works Peter Crockett outlined some of the main objectives of the committee, which include raising the profile of Halton as a cycle touring destination, promoting safe and responsible cycling practices and providing advice to regional council on cycling issues.

At the Region's planning and public works committee meeting last week, Mr. Dennison pushed to have 12 citizens on the committee, up from the four originally recom-

mended by staff. The committee approved increasing the number to eight.

Mr. Dennison then proposed that one staff member from each municipality be on the committee as well, but that was defeated.

"You make this (the committee) too big, and people will stop coming," said Regional Chair Joyce Savoline.

Mr. Crockett's report said the proposed 2005 roads capital budget includes \$50,000 for the cycling committee to cover start-up costs, promotional material, production of regional cycling maps, staff time and other expenses.

Melanie Hennessey can be reached at mhennessey@milton-canadianchampion.com.

FIRST AID Canadian Red Cross

People who take first aid training reduce their personal injuries by up to 30%.

Judith E. Finn
CME, C.C.E. Int., RDT.
Skin & Hair Technologist & Instructor

Providing
**Laser Hair Removal,
Electrolysis & Vascular
Services.**

Call 905-878-2770

WHOLE WHEAT PIZZA **NEW**

ginospizza.ca

LOW CARB
Soft Drink Add 3 Cans (355 ml) \$1.99 extra

1 Large Whole Wheat Pizza
1 Free Workout Pass
\$11.99

Choose from:

CHICKEN PESTO Pesto Spread, Mozzarella Cheese, Grilled Chicken, Mushrooms and Sun-dried Tomatoes	POTATO Garlic Spread, Mozzarella Cheese, Seasoned Potatoes and Sun-dried Tomatoes
SPINACH Garlic Spread, Mozzarella Cheese, Feta Cheese, Cheddar Cheese and Spinach	MEDITERRANEO Garlic Spread, Feta Cheese, Red Onions and Jalapeño Peppers
BRUSCHETTA Garlic Spread, Mozzarella Cheese, and Bruschetta Mix	PESTO ITALIANO Pesto Spread, Mozzarella Cheese, Whole Green Olives, Mushrooms and Sun-dried Tomatoes

Valid only at these locations:

2025 Guelph Line, Burlington - 905-336-5444	1131 Nottinghill Gate, Oakville - 905-825-8500
5111 New Street, Burlington - 905-639-2000	1289 Harborough Court, Oakville - 905-338-0097
473 Guelph Line, Burlington - 905-632-3444	1515 Rebecca Street, Oakville - 905-827-4444
2064 Hamilton Street, Waterdown - 905-689-3666	431 Main Street, Milton - 905-875-4440

Live life with flavour!

Valid only at the locations listed above. Taxes extra. Minimum order 9.99. Delivery charges apply. Free Workout Pass - By appointment only. Must be 18 years or older. First time users only. Some restrictions apply. Offer expires October 31, 2004.

Call **310 4466**

FREE WORKOUT PASS
1 Week Free motivation starter
Full Privilege Fitness Membership
for you and a friend at any

MILTON TOYOTA '05 DRIVE

2005 Corolla CE
\$17,500 MSRP

LEASE FOR \$205* PER MONTH FOR 48 MONTHS WITH \$2,628 DOWN. FREIGHT AND P.D.E. INCLUDED.

Fuel consumption: Hwy 5.3L/100 km (53 mpg).
City 7.1L/100 km (40 mpg).

- 1.8 L, 130 hp engine • 5-speed manual transmission
 - Air conditioning • Tilt steering • AM/FM Stereo CD
 - Keyless entry • Power locks and mirrors • 60/40 split folding rear seat • Driver and passenger airbags
 - Outside temperature gauge
- Plus, receive \$100 tax credit for fuel conservation.



2005 Echo Hatchback
\$12,995 MSRP

\$0 Down
LEASE FOR \$177* PER MONTH FOR 60 MONTHS WITH \$0 DOWN FREIGHT AND P.D.E. INCLUDED

- Fuel consumption:
Hwy 5.2L/100 km (54 mpg)
City 6.7L/100 km (42 mpg)
- 5-speed manual transmission
 - ABS • AM/FM Stereo cassette
 - 60/40 split folding rear seat
 - Tilt steering • Driver and passenger airbags • Tinted glass
- Plus, receive \$100 tax credit for fuel conservation.

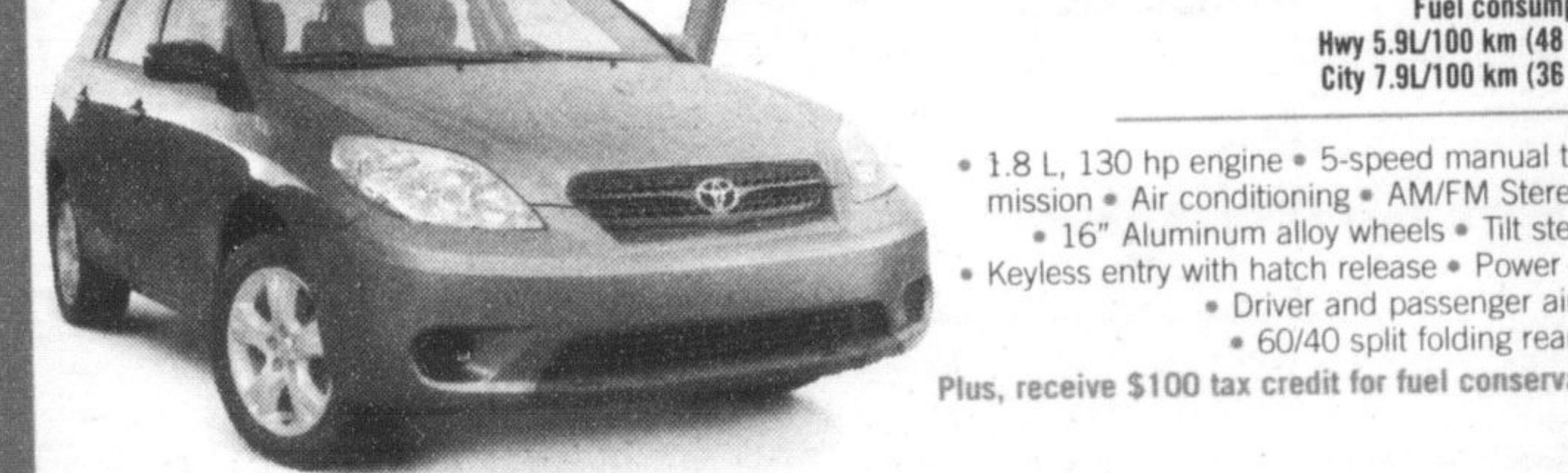


2005 Matrix
\$19,630 MSRP

LEASE FOR \$229* PER MONTH FOR 48 MONTHS WITH \$2,636 DOWN FREIGHT AND P.D.E. INCLUDED

Fuel consumption:
Hwy 5.9L/100 km (48 mpg)
City 7.9L/100 km (36 mpg)

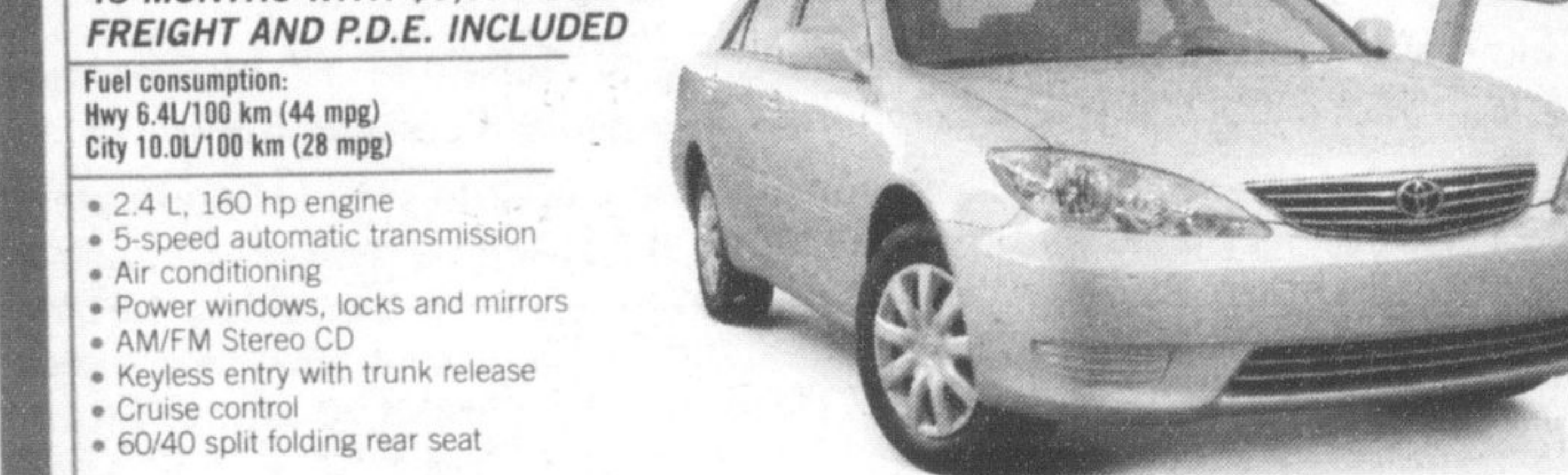
- 1.8 L, 130 hp engine • 5-speed manual transmission • Air conditioning • AM/FM Stereo CD
 - 16" Aluminum alloy wheels • Tilt steering
 - Keyless entry with hatch release • Power locks • Driver and passenger airbags • 60/40 split folding rear seat
- Plus, receive \$100 tax credit for fuel conservation.



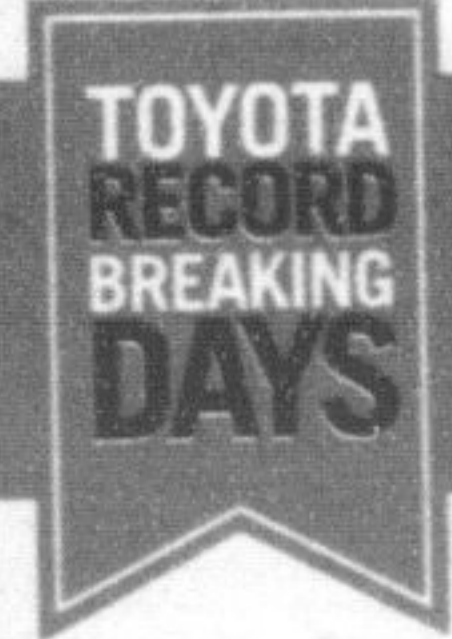
2005 Camry LE
\$24,950 MSRP

LEASE FOR \$299* PER MONTH FOR 48 MONTHS WITH \$3,579 DOWN FREIGHT AND P.D.E. INCLUDED

- Fuel consumption:
Hwy 6.4L/100 km (44 mpg)
City 10.0L/100 km (28 mpg)
- 2.4 L, 160 hp engine
 - 5-speed automatic transmission
 - Air conditioning
 - Power windows, locks and mirrors
 - AM/FM Stereo CD
 - Keyless entry with trunk release
 - Cruise control
 - 60/40 split folding rear seat



Great offers available on remaining 2004's.



400 Steeles Avenue East, Milton
www.milontoyota.com National Car Rental.

REAL PEOPLE SELLING GREAT CARS®