

**We believe... in helping.**  
Anyone. Anywhere.

**PLEASE GIVE 1-888-321-3433**

**FAMILY CHIROPRACTIC CARE**  
under my roof



Dr.  
**Angelika  
Keeth**

311 Martin Street, Milton  
**(905) 878-5165**  
The longest journey is  
the journey inward.

**CORRECTION NOTICE**

**PLEASE NOTE: the Campbellville Fall Harvest Page which appeared in the Canadian Champion Tuesday Sept. 28, 2004 issue had 2 errors**

**Mimpi Furniture End of Season Sale ad, located at 90 Main St. N., Campbellville can be contacted at**

**905-854-0651**  
**www.mimpi.ca**

The Phone number was omitted.

The Maranatha Log House name was spelled incorrectly.

We sincerely regret any inconvenience this may have caused.

**The Canadian  
Champion**

# Survivors part of same support group

• from **BREAST CANCER** on page 1  
more..It's more about me."

Ms Fitzpatrick received her frightening diagnosis 12 years ago at the age of 65 when she discovered a lump in her breast. This was nothing new, since she'd already had a couple of benign lumps removed.

But the doctor didn't like the looks of this one, she recalled.

A lumpectomy revealed it was cancerous and Ms Fitzpatrick underwent radiation and chemotherapy.

"Cancer is one thing you don't think will happen to you and when it does, you're given strength to carry on," she said.

She's been cancer-free since then, although her recovery hasn't been easy — with medications causing complications like blood clots.

Cancer is always in the back of her mind, Ms Fitzpatrick said, especially when a new ache or pain arises.

"When something comes up you don't think is right, it's the first thing you think about," she said.

Both women were part of the same Milton support group, now defunct, started by Joan Gervais 10 years ago. They described it as being instrumental to their healing process.

The group celebrated its anniversary last weekend with former members joining together once again.

Unfortunately, in some communities like Milton,

support services aren't easy to find. The two main support networks in Halton — Wellspring Halton-Peel and Breast Cancer Support Services — are in Burlington.

"I find there's not enough support once you're diagnosed," Ms Varanelli said, adding she wasn't prepared for her test results. "I ran over on my way home from work to get the results. Two seconds later, I had cancer and was booking surgery."

Although the Milton support group gave Ms Varanelli someone to talk to, she said a once-a-month group isn't enough.

"There's no permanent office where someone can be there during the day," Ms Varanelli said, explaining the hardest time is when cancer patients are all alone during the day with no one to talk to.

Ms Varanelli is hoping to change that after she retires by starting a permanent support service in Milton.

"That's my biggest beef living here in Milton — there's nothing locally here in town. There's no place to go and drop in."

Audrey Cairns is the interim president of the Milton branch of the Burlington unit of the Canadian Cancer Society. She said many of the society's volunteers — including Ms Fitzpatrick and Ms Varanelli — are cancer survivors.

"They do it out of gratitude," she said. "If they indeed used our services, they feel they want to put something back."

One of the services the Milton branch offers is

rides to and from treatment or follow-up appointments.

"Lots of people after their surgery find their treatment schedule is really hectic. It gives their family a break and them a break (from driving)," she said, adding in some cases it provides the only transportation option a cancer patient has.

People interested in this service can give John Perrott, Milton ride co-ordinator, a call at (905) 878-9286.

Those who wish to recognize Breast Cancer Awareness Month in a tangible way can participate in Sunday's CIBC Run for the Cure, being held in 40 communities across Canada.

The closest location is at Burlington's Central Park. Participants may walk or run either one or five kilometres. Final registration will take place from 6:30 to 8:30 a.m. at the Burlington Seniors' Centre, 2285 New St., Sunday. Registration costs \$35 and is free for participants 18 years old and younger.

A shuttle bus will be available to the run site from the Burlington GO station on Fairview Street, beginning at 7:30 a.m.

Warm-up will begin at 9:15 a.m., and the run will start at 9:30 a.m. An awards celebration will take place at 10:30 a.m.

For a donation or registration form, visit [www.cibcrunfortheure.com](http://www.cibcrunfortheure.com).

Stephanie Thiessen can be reached at [sthiessen@miltoncanadianchampion.com](mailto:sthiessen@miltoncanadianchampion.com).

**Business without advertising is like winking in the dark ~ You know what you're doing ~ but nobody else does!**

# Chapin confident about funding

• from **SCHOOL** on page 5

Mr. Kennedy noted part of the constraints facing the ministry is the huge jump in the core number of acute-needs students in the Ontario school system, a doubling over two years from 27,000 students to 54,000.

Board Chair Mary Chapin remains optimistic that the need to hire more EAs will be covered by the contingency fund. "Our need is clear and we cannot leave those students (without service)."

Part of the reserves, she said, were also to be used to pay for other needs like equipment. For example, it

included buying a number of mechanical chairs for special-needs students to be able to get up and down the stairs, addressing fire safety issues. "(The reserve) wasn't slush money," Ms Chapin said.

Dusty Papke, the Halton public school board's director of education, stressed that the hirings weren't done to purposely put a financial squeeze on the ministry.

"Our board did not do that with the notion of putting pressure on the ministry. Our board did that because we don't have any choice. Those kids have to be supported."

**GALLINGER Ford PRE-OWNED**  
**We Make It At Fordable**

**2004 FOCUS ZTS**

2.0L 4 cyl, auto, A/C, P/W, P/L, AM/FM/CD, p. moonroof, leather trim, alum wheels, only 13,247 km, balance to Ford factory warranty, white exterior. St #2332A

**\$2000 DOWN** **\$176 bi-weekly**



**2000 LINCOLN LS**

V8, auto, A/C, P/W, P/L, p. seats, p. moonroof, alum wheels, remote starter, speed control & tilt, only 62,044 km, leather trim, Desert Tan exteriior. St #2317A

**\$2500 DOWN** **\$193 bi-weekly**



**2003 MUSTANG CONVERTIBLE**

V6, auto, A/C, P/W, P/L, speed control & tilt, p. seat, alum wheels, only 22,527 km, balance of Ford factory warranty, Screaming Yellow ext, black roof & trim. St #2309A

**\$3000 DOWN** **\$220 bi-weekly**



**PST & GST INCLUDED**

**ONLY EXTRA CHARGE IS LICENCE FEE & EXTRA WARRANTY IF NEEDED**

**Problems with Credit? Bad Credit • Discharged Bankrupt • No Credit Need a vehicle? We can help!** We help good people with credit problems. Get financed with the best possible rates!!! Call **Jef Green**

PST & GST included in monthly payments, licence, fee + additional warranty extra (if needed). Payments are 60 mos. at 7.5% O.A.C. Limited time offer. See dealer for details.

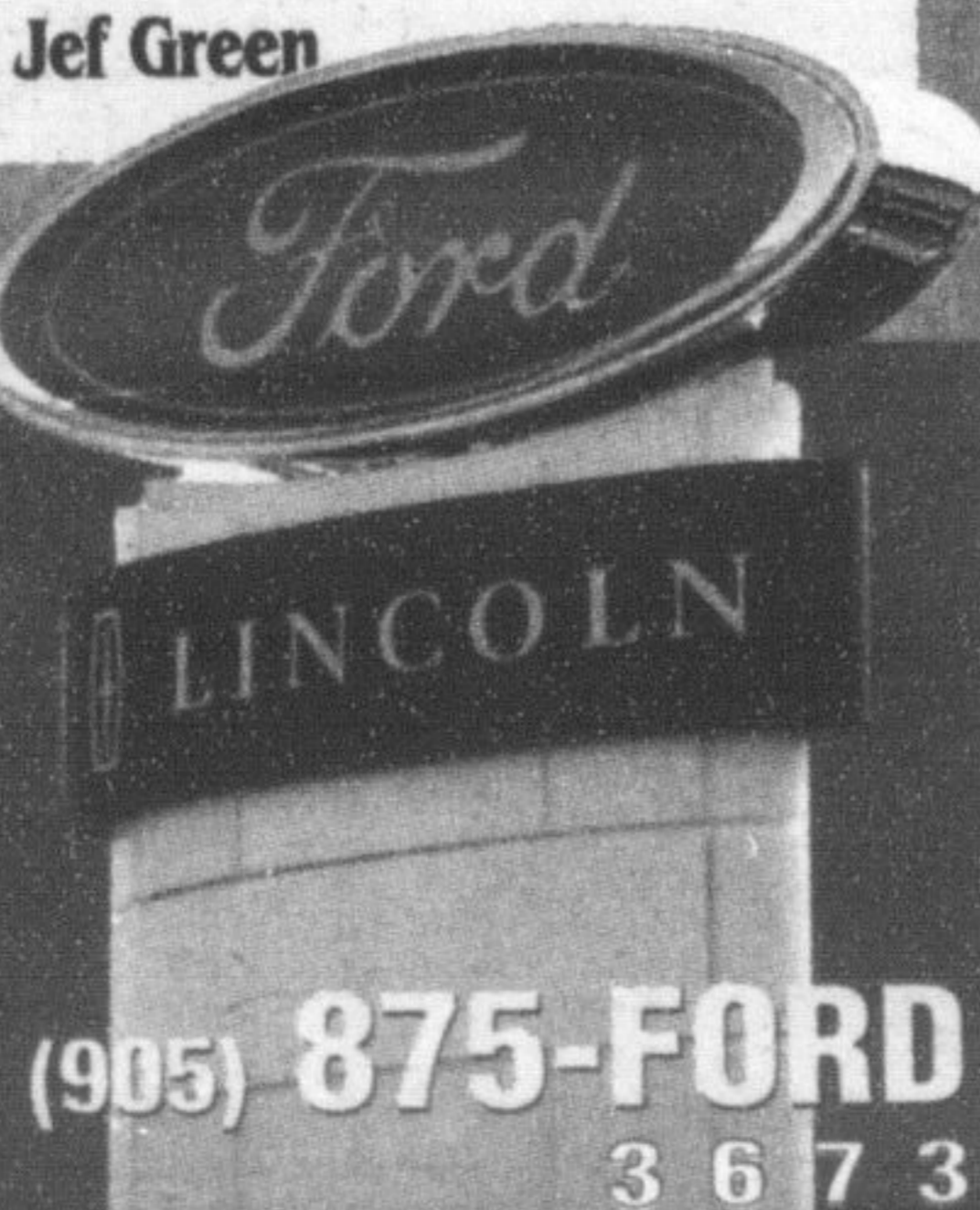
**GALLINGER**  
FORD LINCOLN

655 MAIN STREET EAST, MILTON

[www.gallingerford.com](http://www.gallingerford.com)

A Tradition of Value & Trust since 1967

SALES • LEASING • SERVICE • PARTS • COLLISION CENTRE



**(905) 875-FORD**  
3 6 7 3

**Fine Oak Things**  
QUALITY OAK AND PINE FURNITURE OF CAMPBELLVILLE Est. 1989

**SOUTHERN ONTARIO IS COMING HOME TO FINE OAK THINGS**

**FEATURED:**  
Single sleigh bed, comes in different sizes and stains.  
Several different dressers, armoires, night tables available.

**New rustic pine furniture in black antique. Other colours available. Several bedrooms on display in Pine and Oak. Occasional tables also available.**

**SOUTH OF 401 AT GUELPH LINE, CAMPBELLVILLE (905) 854-0649**  
[www.fineoakthings.com](http://www.fineoakthings.com)

**100% AMISH MADE SOLID OAK FURNITURE**  
Visit Our Over 6,000 Sq. Ft. Showroom • Areas Largest Selection of Oak Buffets, Hutches, China Cabinets, Bookcases & Accessories

**HaltonSearch.com**