

Dateline

Dateline is a free listing of coming events only. The column is available to local community groups to assist in promoting their future events. Only charitable or non-profit community groups may use this service.

We can only guarantee one issue of publicity closest to the date of the occurrence although more insertions are possible if demand is low.

Notices for Dateline should be handed in at the office of The Champion, 191 Main St. E., mailed to P.O. Box 248, Milton, Ont., L9T 4N9, faxed to (905) 878-4943, or e-mailed to miltoned@haltonsearch.com.

The final deadline is noon Friday for Tuesday's edition and noon Wednesday for Friday's edition.

Dateline items aren't accepted by telephone.

Friday Sept. 10

Nassagaweya Presbyterian Church (No. 15 Sideroad, east of Guelph Line) presents **Circle of Friends**, a group of young singers, at 7 p.m. Doors open at 6:30 p.m. Tickets cost \$5 per adult, \$5 for one child and \$2 for additional children. Proceeds go toward Operation Christmas Child. For tickets, call (905) 854-0352 or (905) 854-1055.

The Milton Seniors' Activity

Centre, 500 Childs Dr., holds **contract bridge** at 10 a.m. The cost is \$2 for members and \$4 for non-members. It holds **euchre games** at 1:30 p.m. New players are welcome. It also holds its **Campbellville Evening Bid Euchre Party** at the Lions Hall in Campbellville at 7:30 p.m. The cost is \$2.50. For more information on these activities, call (905) 875-1681.

Wellspring Halton-Peel, a support network for cancer patients and their families, holds its drop-in **Relaxation and Visualization** group from 11 a.m. to 12:30 p.m. at 2545 Sixth Line in Oakville. For more information, call (905) 257-1988.

Saturday Sept. 11

Registration is held for Kilbride Beavers, Sparks, Cubs, Brownies, Scouts and Guides at Kilbride Public School in the Community Room from 9 to 11 a.m.

The First Milton Spark Unit is selling lemonade and **Girl Guide cookies** at the Milton Farmers' Market on Main Street. There's also **Girl Guides of Canada registration** at Milton Mall from 10 a.m. to 4 p.m. for Sparks, Brownies, Guides, Pathfinders, Senior Branches and adult volunteers.

The Milton Public Library presents a free **family storytime** from

10:30 to 11 a.m. at Milton Mall, near the food court. Adult accompaniment is required.

Sunday Sept. 12

Nassagaweya Presbyterian Church holds its second annual **Community Breakfast Service**. Breakfast is served outside from 9 to 11:30 a.m. along with children's activities, music and a message. The church is located on No. 15 Sideroad, just east of Guelph Line. For more information, call (905) 854-1055.

Monday Sept. 13

The **Oakville Osteoporosis Group** meets at 1:30 p.m. at St. Michael's Church, 181 Sewell Dr., in Oakville. For more information, call Phyllis Spillone at (905) 829-4863.

The **Milton Music Teachers' Association** meets at 9:15 a.m. at 256 Bousfield Cres. Local music teachers interested in joining the association are invited. For more information, call Norma at (905) 878-2126.

Wellspring Halton-Peel, a support network for cancer patients and their families, holds its drop-in **Lymphoma Support Group** from 7 to 8:30 p.m. at 2545 Sixth Line in Oakville. For more information, call (905) 257-1988.

Tuesday Sept. 14

• see **DATeline** on page B6

GALLINGER Ford PRE-OWNED BACK-TO-SCHOOL EVENT!

2002 FORD FOCUS SE 4DR

4 cyl., auto, ps, pb, A/C, pl, AM/FM/CD, only 27,300 km. Balance of Ford Factory Warranty. Bright Red ext., grey cloth trim. Stk# 2212A.

\$1500 DOWN ~~\$318/mth~~ **\$276/mth**



2001 LINCOLN LS V8

Fully loaded incl. A/C, pw, pl, ps, p.moonroof, alum. wheels, remote starter and more! A must see! Only 62,044 km. Desert tan ext., tan leather trim. Stk# 2317A

\$3500 DOWN ~~\$428/mth~~ **\$397/mth**



CIBC RUN for the CURE

WALK OR RUN 5k or 1k!

For Donations and Participation Information Please Contact Brian Goodwin

Sunday, Oct. 3, 2004 9:30 am
Central Park, Drury Lane Burlington

905-875-3673



PST & GST INCLUDED

ONLY EXTRA CHARGE IS LICENCE FEE & EXTRA WARRANTY IF NEEDED

Problems with Credit? Bad Credit • Discharged Bankrupt • No Credit. Need a vehicle? We can help! We help good people with credit problems. Get financed with the best possible rates!!! Call **Jef Green**

PST & GST included in monthly payments. Licence, fee + additional warranty extra (if needed). Payments are 60 mos. at 7.5% O.A.C. Limited time offer. See dealer for details.

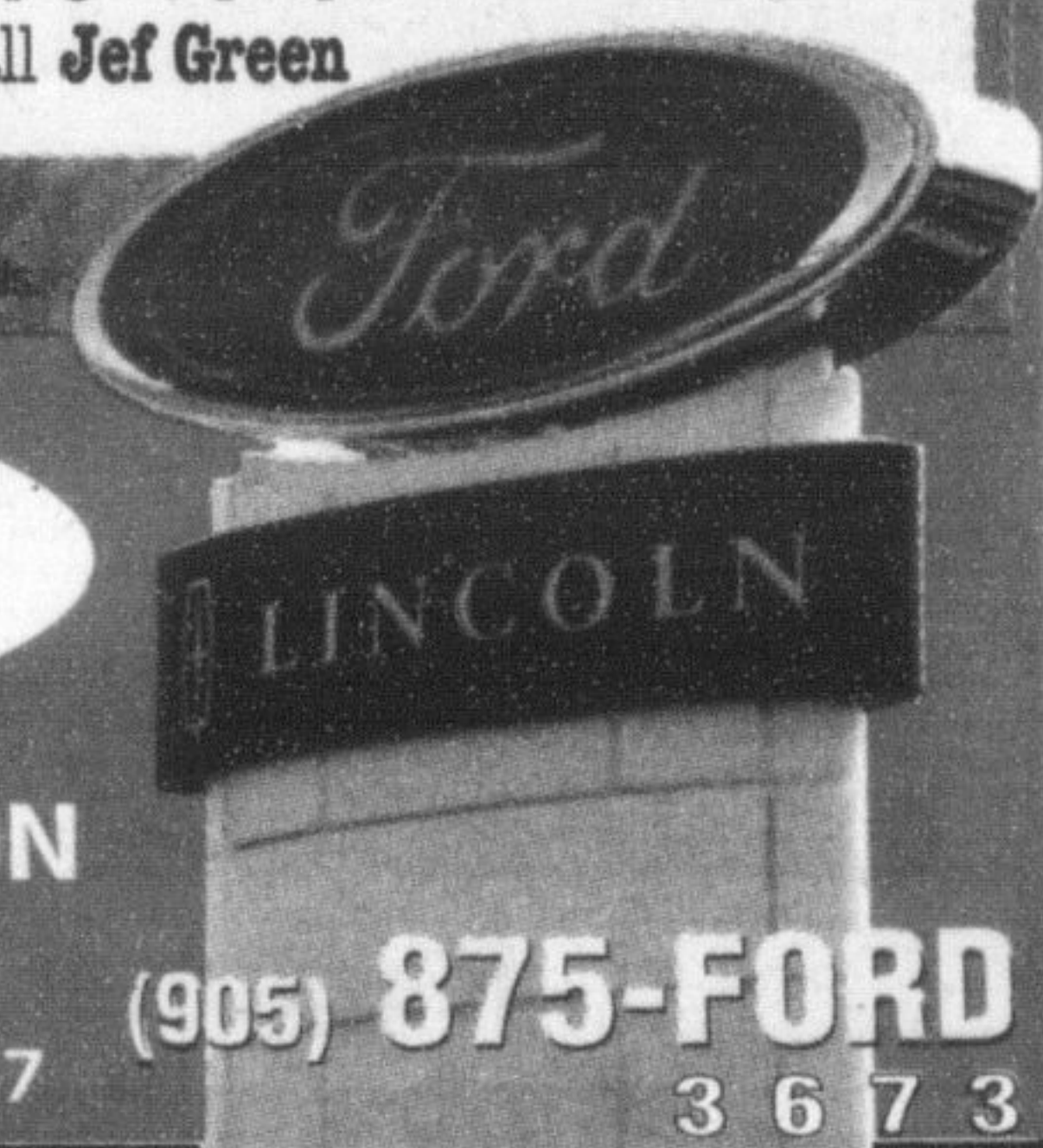
GALLINGER FORD LINCOLN

655 MAIN STREET EAST, MILTON

Visit us at www.gallingerford.com

A Tradition of Value & Trust since 1967

SALES • LEASING • SERVICE • PARTS • COLLISION CENTRE



(905) 875-FORD 3 6 7 3

Weekend SPOTLIGHT

NEW LISTING



\$212,000

OPEN HOUSE
SAT & SUN 2-4PM
318 LAURIER AVE. #35

"A CREEK RUNS THROUGH IT" Rarely offered 3+2 bdrms with upper level fm. Features incl: over 1500 sq ft plus fin basement, woodburning brick FP, dbl car garage, C/A, C/vac, upper level laundry rm++++. Fabulous sunsets overlooking ravine from large private deck. Great location -- close to shopping, transit, schools, etc. This condo townhouse has everything on your wish list and more!!! Please call Fiorella or Les at 416-418-0276.



Les Raffay Sales Rep
Fiorella Cribari Assoc. Broker

SUTTON GROUP REALTY SYSTEMS INC.
416-762-4200
LES RAFFAY & FIORELLA CRIBARI



Open House coming up?

Create Traffic! Call Diane to book your listing in the Friday Weekend Spotlight on Homes

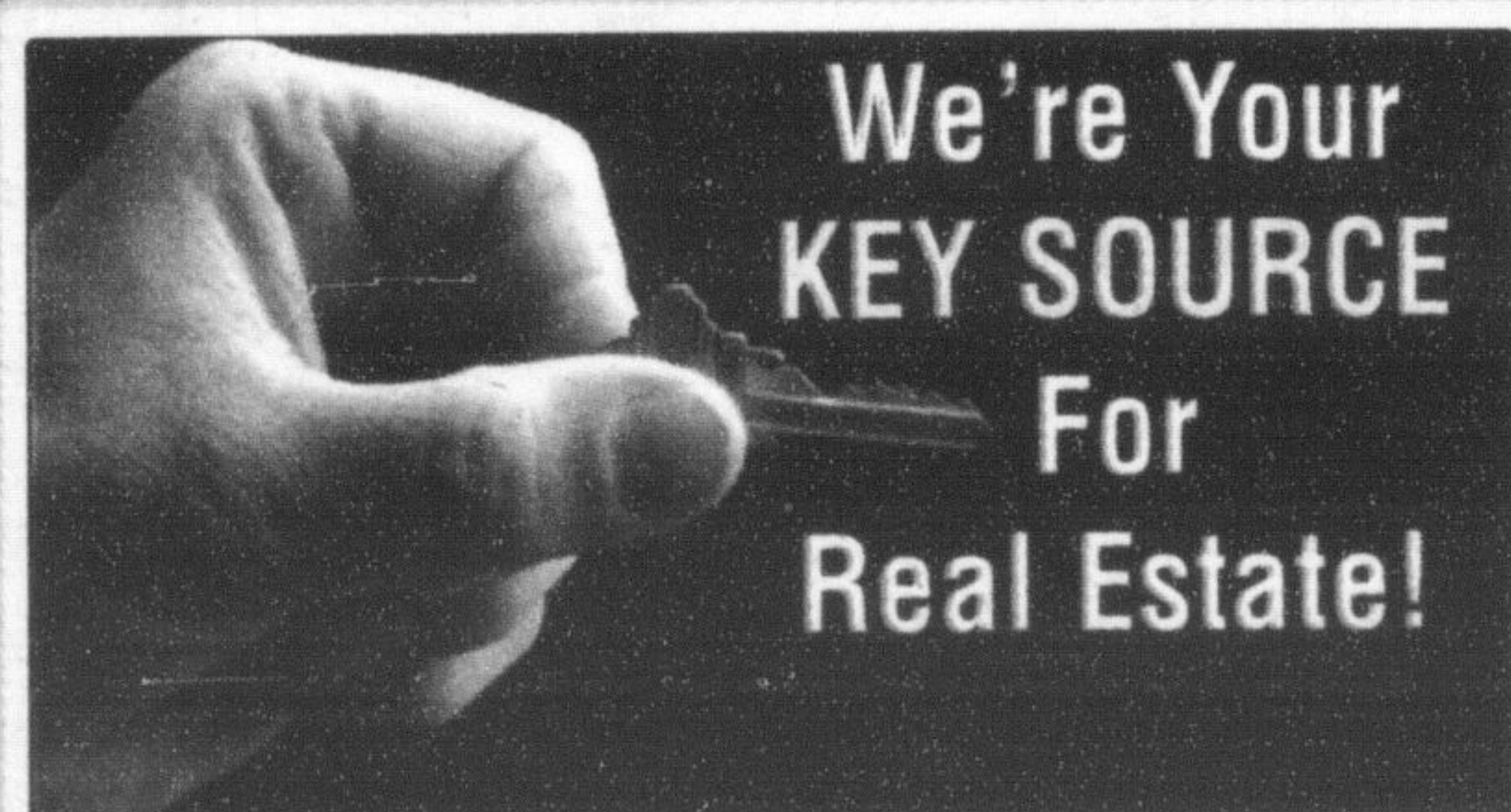
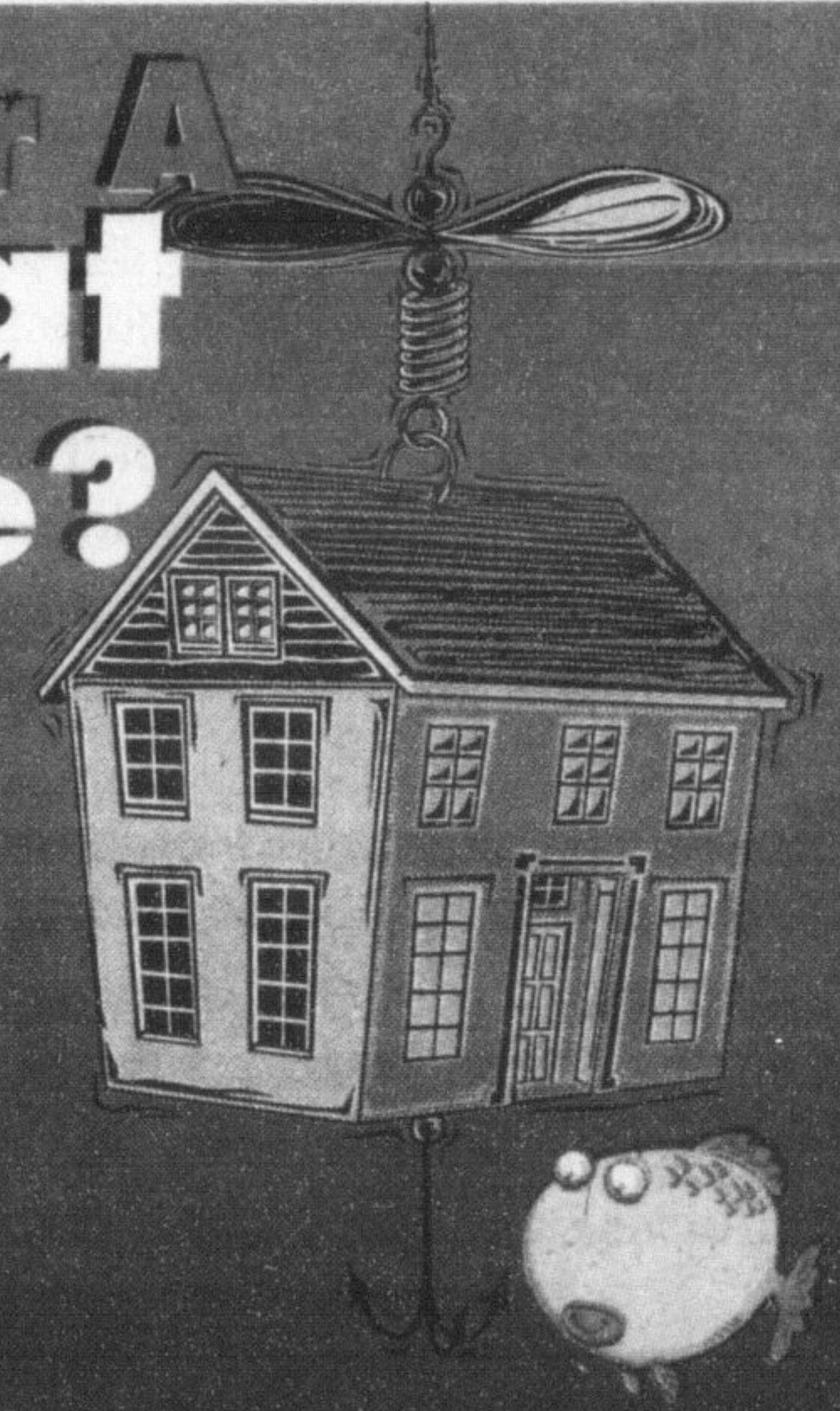
MILTON CANADIAN CHAMPION 905-878-2341 X224
DIANE WOLSTENHOLME, SALES REPRESENTATIVE



Fishing For A

Great House?

These Alluring Homes are Waiting for Your Inspection



We're Your KEY SOURCE For Real Estate!

See our Real Estate section in Tuesday's Canadian Champion for the latest real estate news. In addition to our residential and commercial listings, we offer home improvement features, advice on buying and selling a home, recipes and more.

The Canadian Champion
Call Diane Wolstenholme
905-878-2341 ext.224

Factors to consider when house hunting

Be sure to examine more than just the home's interior and exterior features

As the warmer weather approaches, our thoughts often turn to house hunting. Shopping for a home should be an enjoyable, exciting experience so here are a few pointers to help you get started:

- Look in the price range that fits your financial circumstances and that you're most comfortable with.
- Keep in mind your proximity to work, schools, shopping, recreation facilities, parks, libraries, hospitals and other medical care.
- Consider accessibility to major roads,

expressways and public transportation.

- Examine the condition and market value of other homes in the area.
- Find out how property values are changing in the neighbourhood.
- Find out about any future plans for the neighbourhood and what it is zoned for.
- Determine the availability of public services such as garbage pick-up, postal delivery, snow removal, side-walks, sewers and lighting.

- News Canada

