

Correction officer in court on charges

A correctional officer accused of providing contraband to female inmates for sexual favours will return to Burlington court September 21 to set a date for trial.

This was decided August 31 when the accused appeared at Ontario Court of Justice in Burlington.

Halton Regional Police charged the adult male employee of Milton's Vanier Institute for Women with four counts of breach of trust and three counts of sexual assault in March.

His name is being withheld to protect the safety of the victims, police said.

FIRST AID

People who take first aid training reduce their personal injuries by up to 30%.

+ Canadian Red Cross



Two suspects make court appearance

Two Milton men charged in connection with a marijuana-growing operation will return to Burlington court September 28.

The date was set Tuesday during an appearance at Ontario Court of Justice in Burlington.

Halton Regional Police charged Robert Gordon Popp, 36, and Troy Vernon Burton, 23, in June with production of a controlled substance, possession of a controlled substance for the purpose of trafficking and theft of electricity under \$5,000.

Police raided a grow operation June 9 in a barn on a Hwy. 7 property on the Milton/Acton border between Fourth and Fifth lines.

They seized 259 marijuana plants with a potential street value of \$259,000.

Trial date set in grow house case

The trial of a Rockwood man facing drug charges in connection with the raid of a grow operation on the Milton/Acton border will take place October 27 in Burlington court.

Wesley Guy Whitford, 43, was charged in July by Halton Regional Police with production of a controlled substance, possession of a controlled substance for the purpose of trafficking and theft of electricity under \$5,000.

The trial date was set Tuesday when he appeared at Ontario Court of Justice in Burlington.

The grow operation was set up inside a barn on a Hwy. 7 property, between Fourth and Fifth lines.

Halton Regional Police said 259 marijuana plants were seized June 9 in various stages of growth with a potential street value of \$259,000.

Also seized was about \$2,000 in growing equipment.

2004 Clear Out Event!

04 ARMADA

2 REMAINING!



~~\$53,500~~ MSRP

\$43,500* SALE

\$10,000 OFF!

04 PATHFINDER

"CHINOOK"

4 REMAINING!



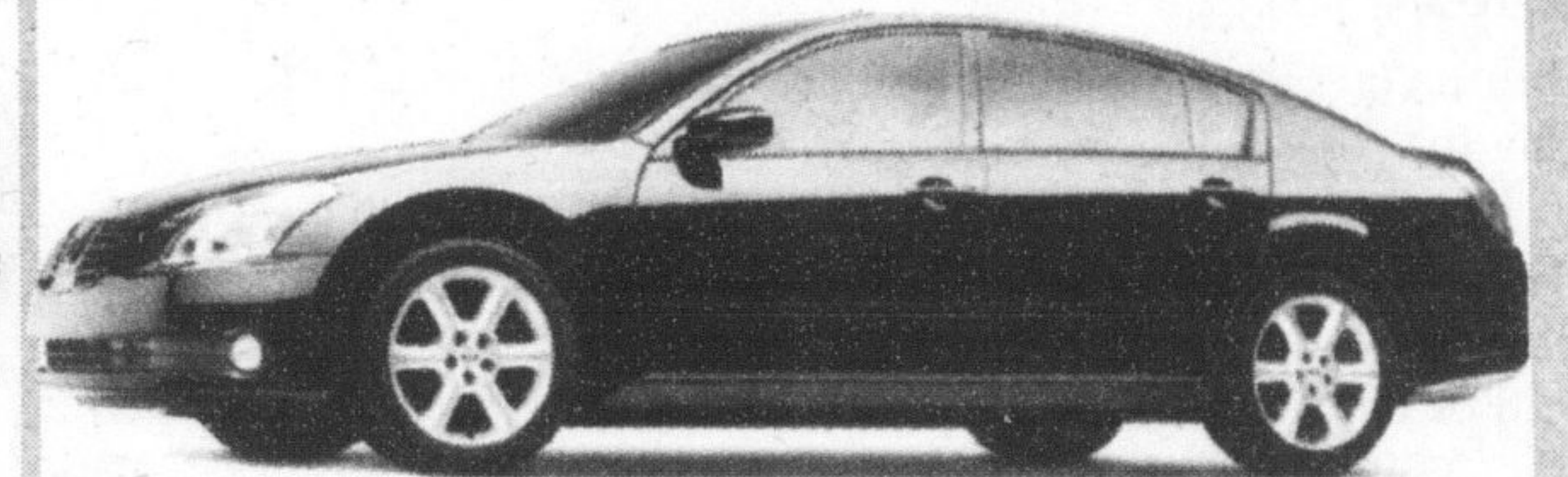
~~\$36,200~~ MSRP

\$31,200* SALE

\$5,000 OFF!

04 MAXIMA

12 REMAINING!



~~\$35,600~~ MSRP

\$31,600* SALE

\$4,000 OFF!

& 2.8% FINANCE LEASE

LEASE FROM **\$229** /MONTH*
(Freight and PDE included) FOR 60 MONTHS

OR BUY FOR
\$16,998 MSRP

CHOOSE PURCHASE
FINANCING
starting at
3.8%

\$0 Downpayment
Security Deposit
First Lease Payment

INTRODUCING THE SPECIAL EDITION 2005 SENTRA 1.8

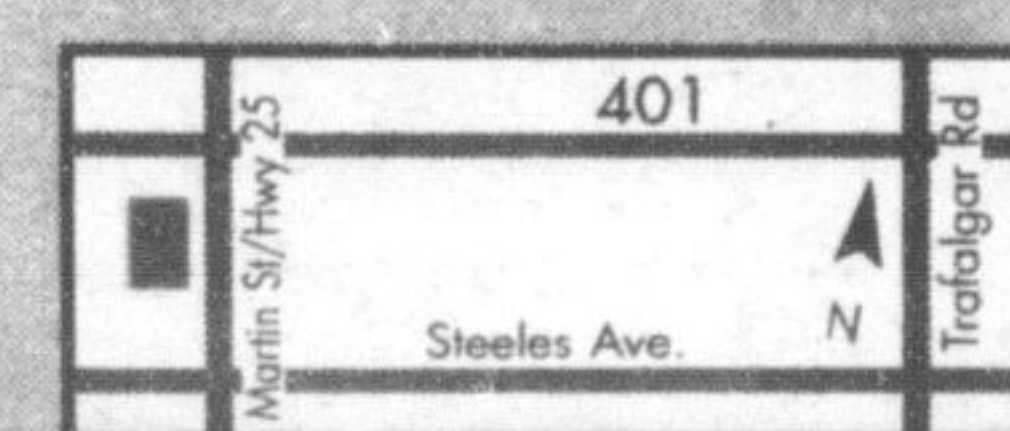
The Special Edition 2005 Sentra 1.8 Includes: • 126-HP 1.8 L DOHC Engine • Air Conditioning • 100-Watt CD with AM/FM Audio System • Power Windows, Power Locks, Power Outside Mirrors • Centre Console Armrest • Dual Vanity Mirrors • Battery Saver • Colour-Keyed Door Handles, Body Side Mouldings And Outside Mirrors • Remote Keyless Entry System with Power Trunk Release • Variable Intermittent Wipers • 8-way Adjustable Driver's Seat • 60/40 Split Folding Rear Seat • Tilt Steering • These are only a sample of over 40 standard features, come in and see the full line of options available



Milton's
NORTH END
NISSAN LTD.

610 MARTIN STREET, MILTON
905-878-4137

SALES DEPT. HOURS:
Mon.-Thurs. 9:00 - 9:00
Fri. 9:00 - 6:00
Sat. 9:00 - 5:00



SHIFT
www.nissan.ca