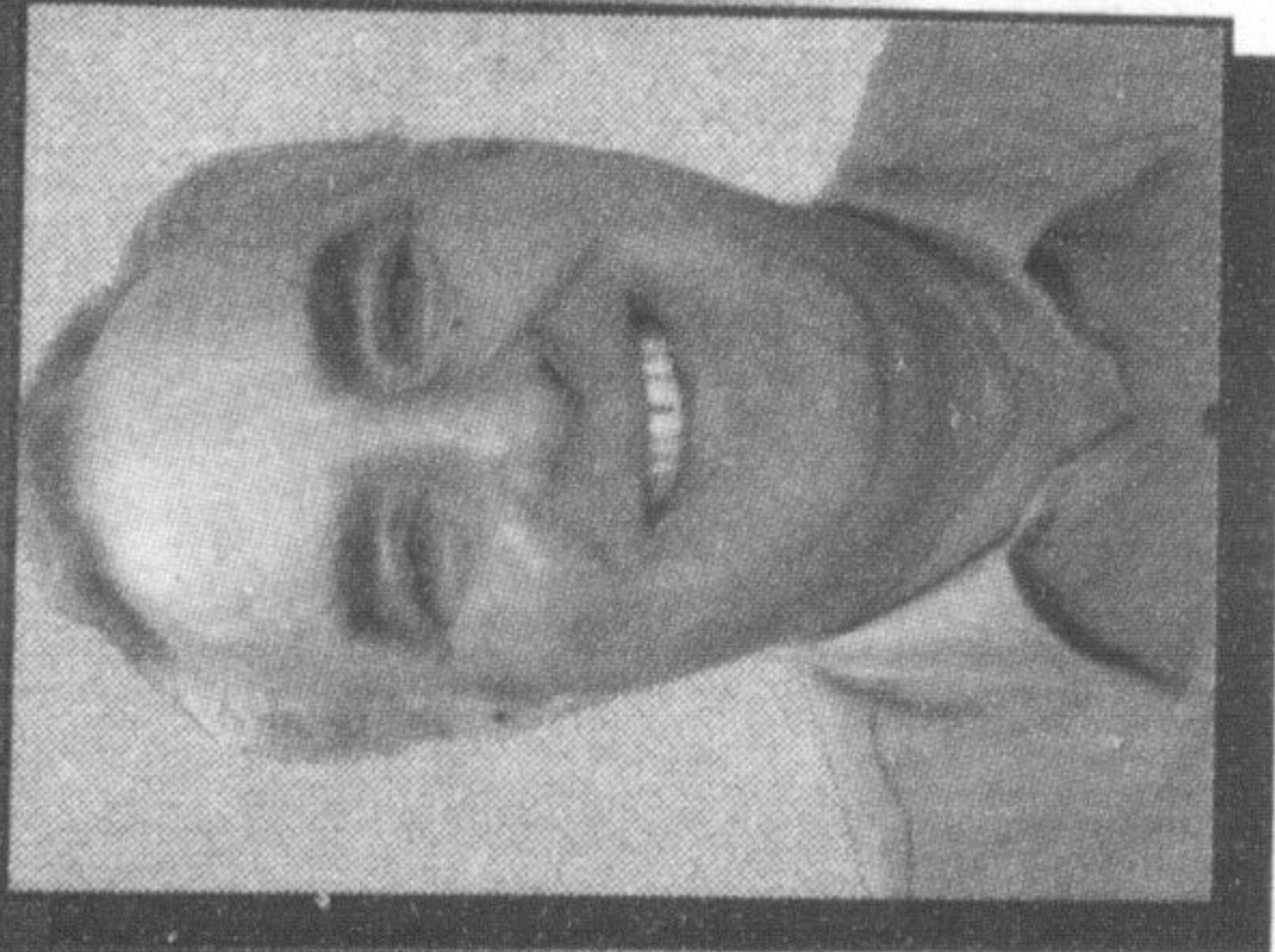


**Gary Wants
Your Business!**



**Milton's #1
Dealer**

FIVE STAR
★★★★★

Are you New to Milton?

Pay us a visit. You'll be glad you did!

OR UP TO
0% FINANCING & LEASING AVAILABLE IN REBATES AND DISCOUNTS

Attention Chrysler Suppliers:
If your company supplies any services to Chrysler, you may qualify for additional discounts.
See dealer for details.

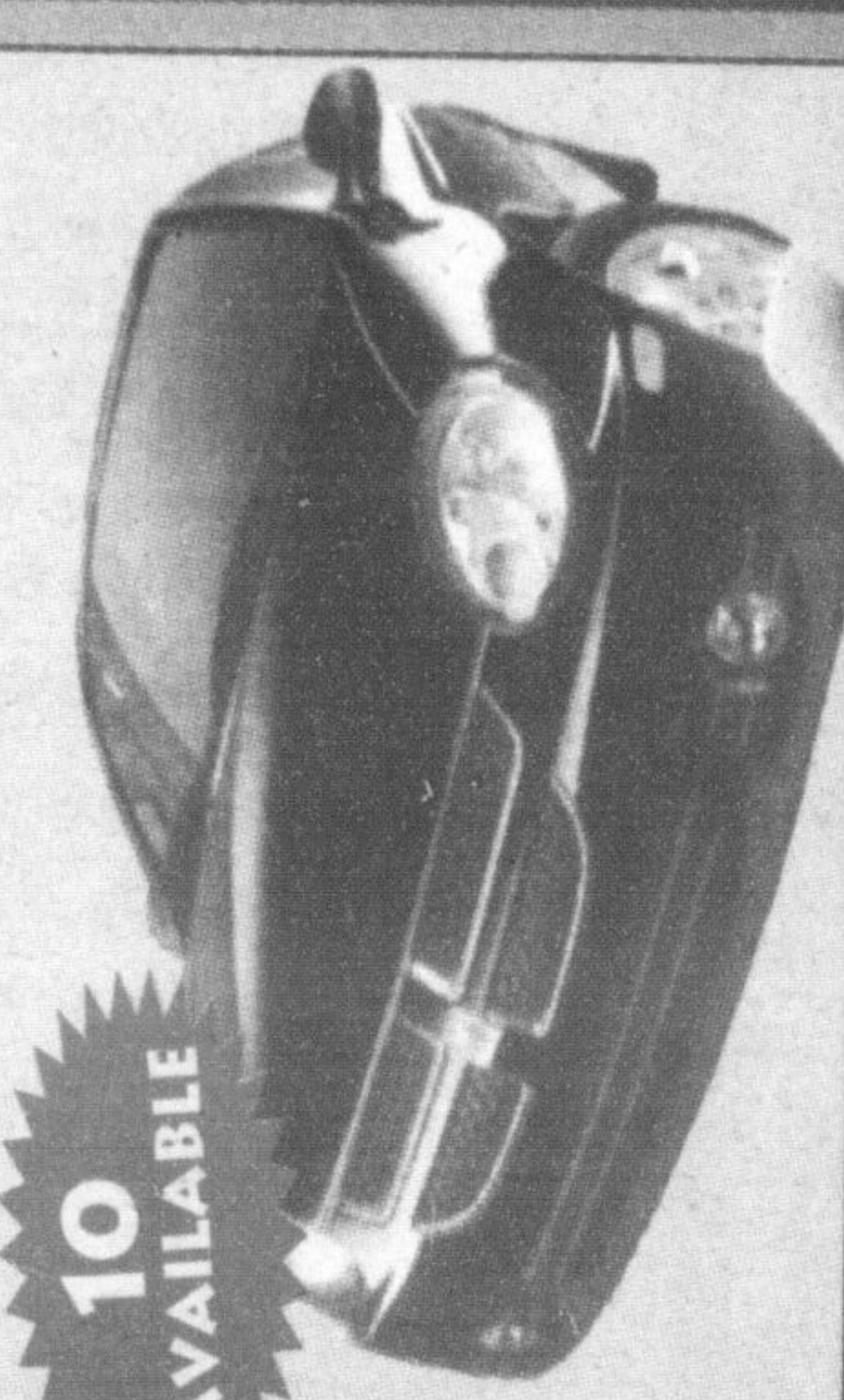


2004 Chrysler Sebring Sedan LX

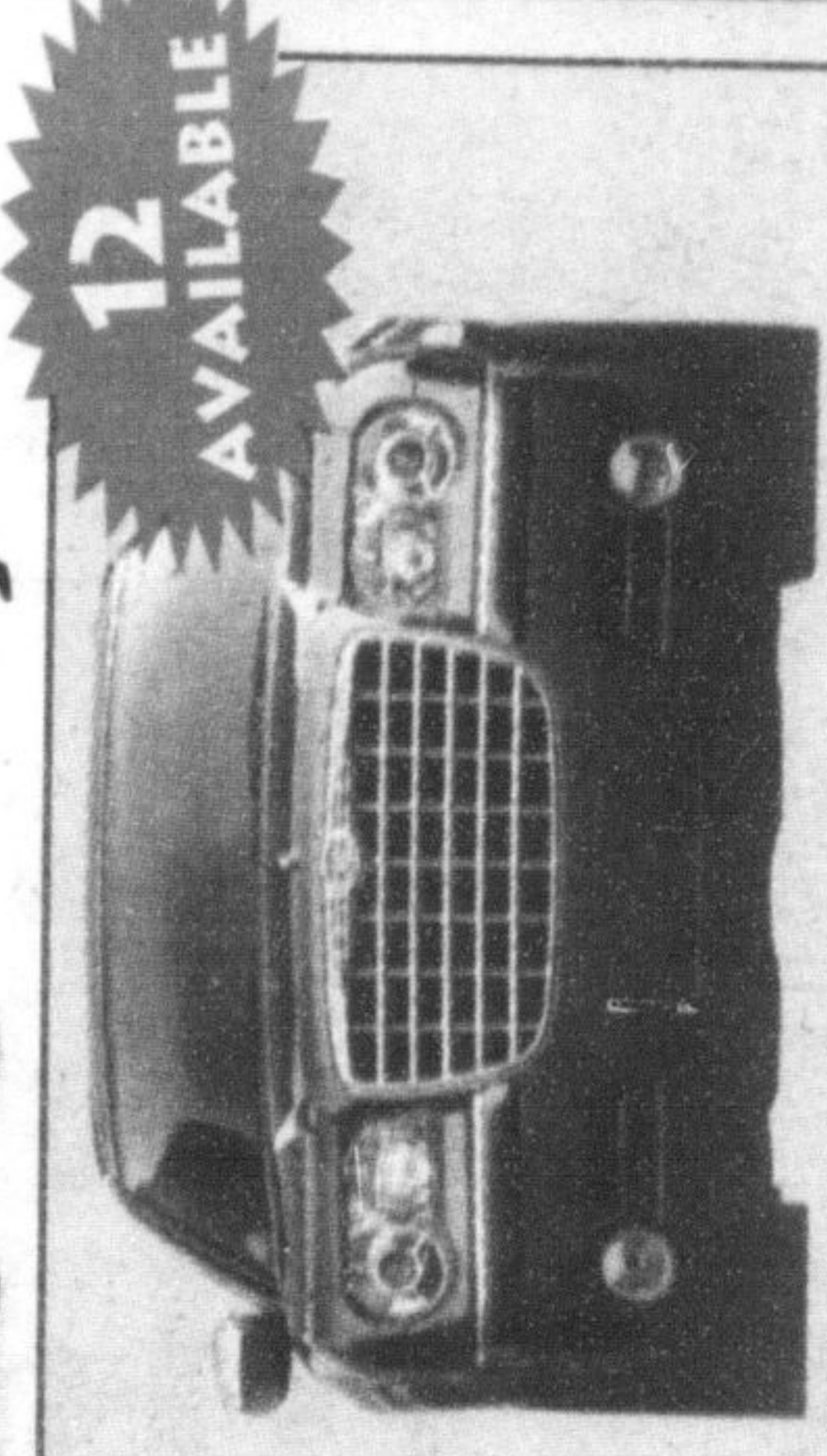
- 2.4L DOHC 16V SMPI engine
- Automatic transmission • Air conditioning
- Power windows, locks and mirrors • Keyless entry
- Cruise control • AM/FM/CD stereo
- Sentry-Key® Theft Deterrent System
- Multistage driver and front-passenger air bags

CASH PURCHASE FOR
\$19,788*
OR LEASE FOR
\$258† A MONTH FOR 48 MONTHS WITH \$4,330 DOWN PAYMENT OR EQUIVALENT TRADE

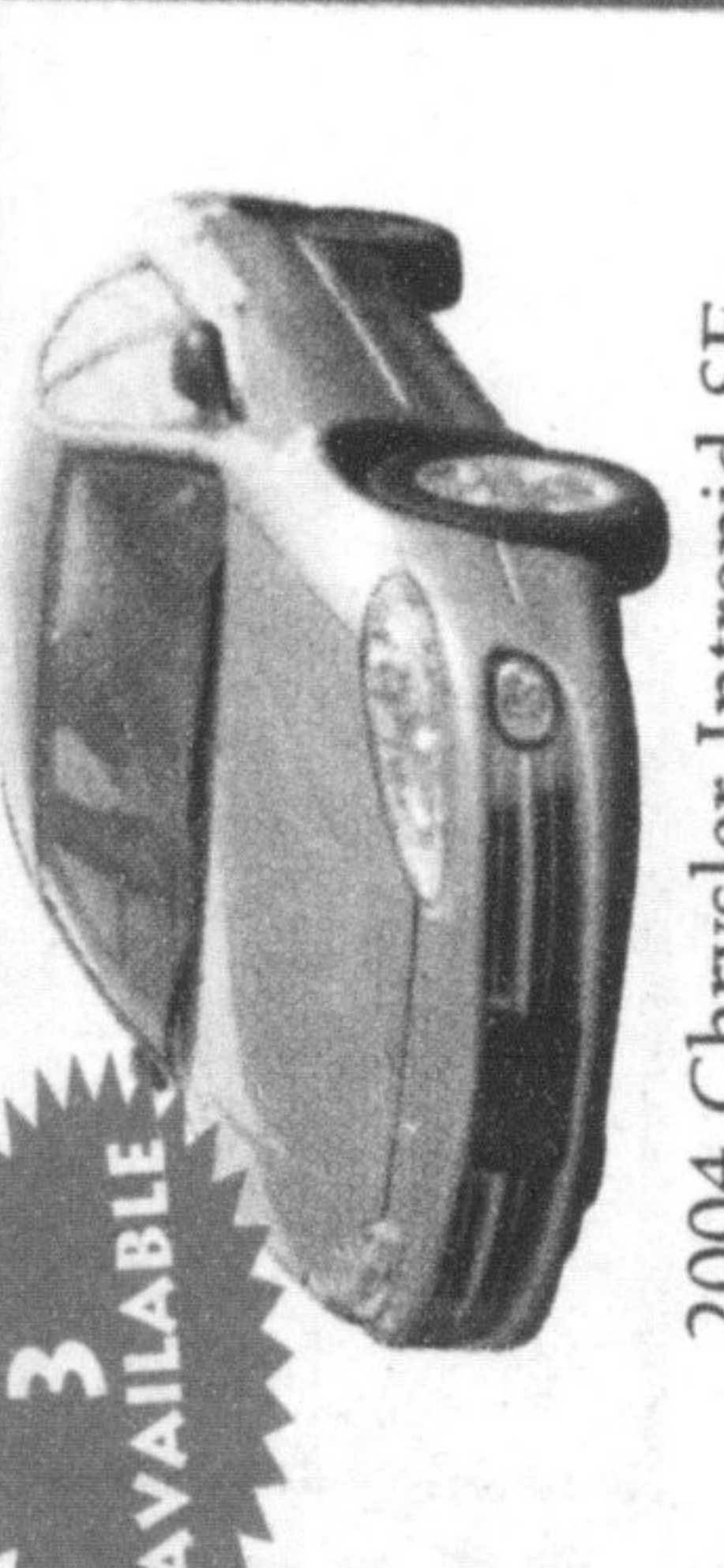
2004 Dodge SX 2.0
Air, auto, CD, 4dr, tilt



10 AVAILABLE



2005 Chrysler 300C
With a dramatic shape, the power of an available 5.7 litre HEMI® engine and the precise handling of rear-wheel drive, Chrysler 300C combines luxury, performance and comfort at a price that is surprisingly affordable.



2004 Chrysler Intrepid SE

- 2.7L DOHC 24-Valve V6 200hp engine
- Air conditioning • AM/FM/CD stereo
- Sentry-Key® Theft Deterrent System
- Keyless entry • Cruise control

CASH PURCHASE FOR
\$21,288*
OR LEASE FOR
\$274† A MONTH FOR 48 MONTHS WITH \$4,670 DOWN PAYMENT OR EQUIVALENT TRADE

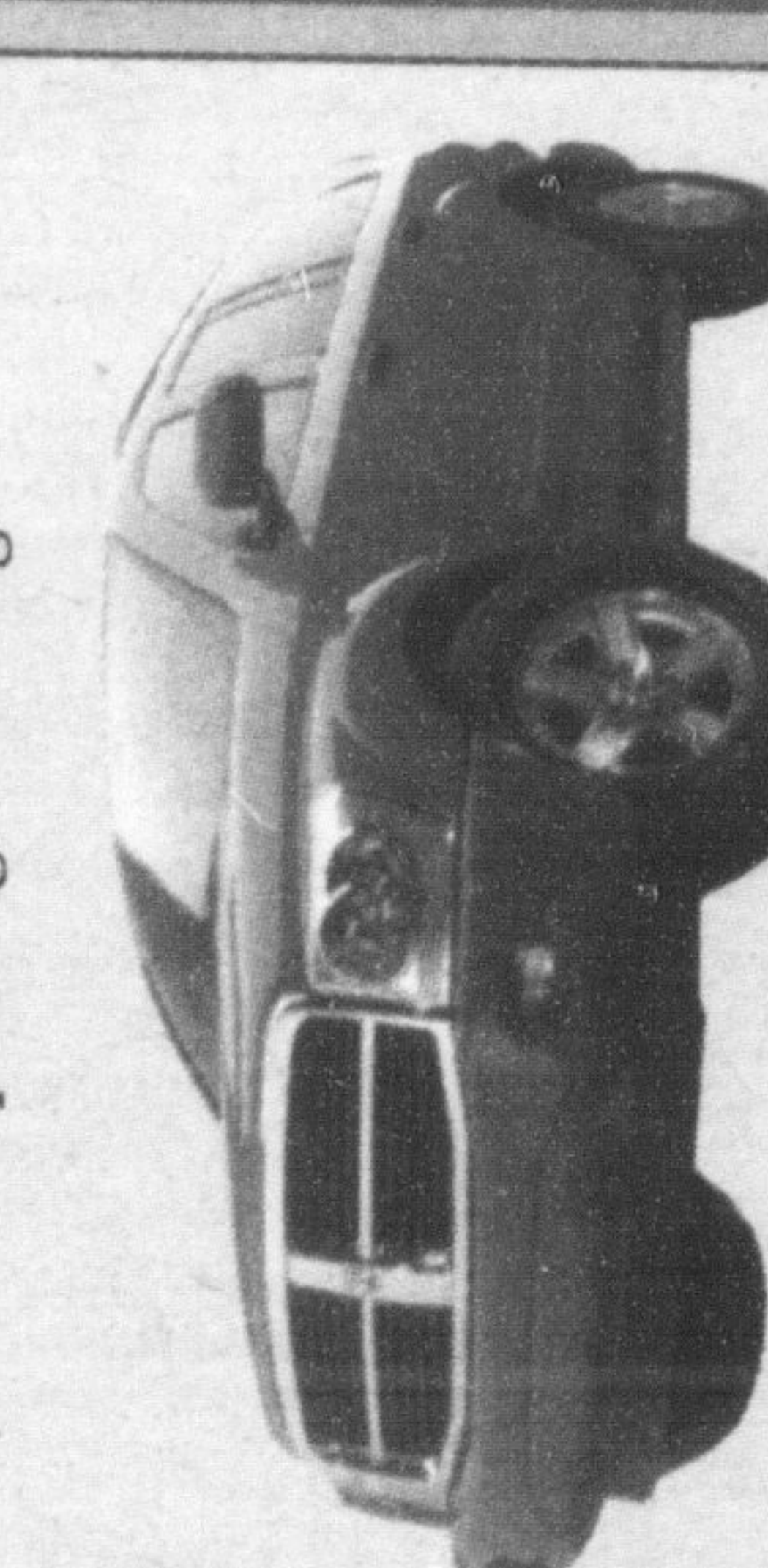


2004 Grand Cherokee Laredo 4x4

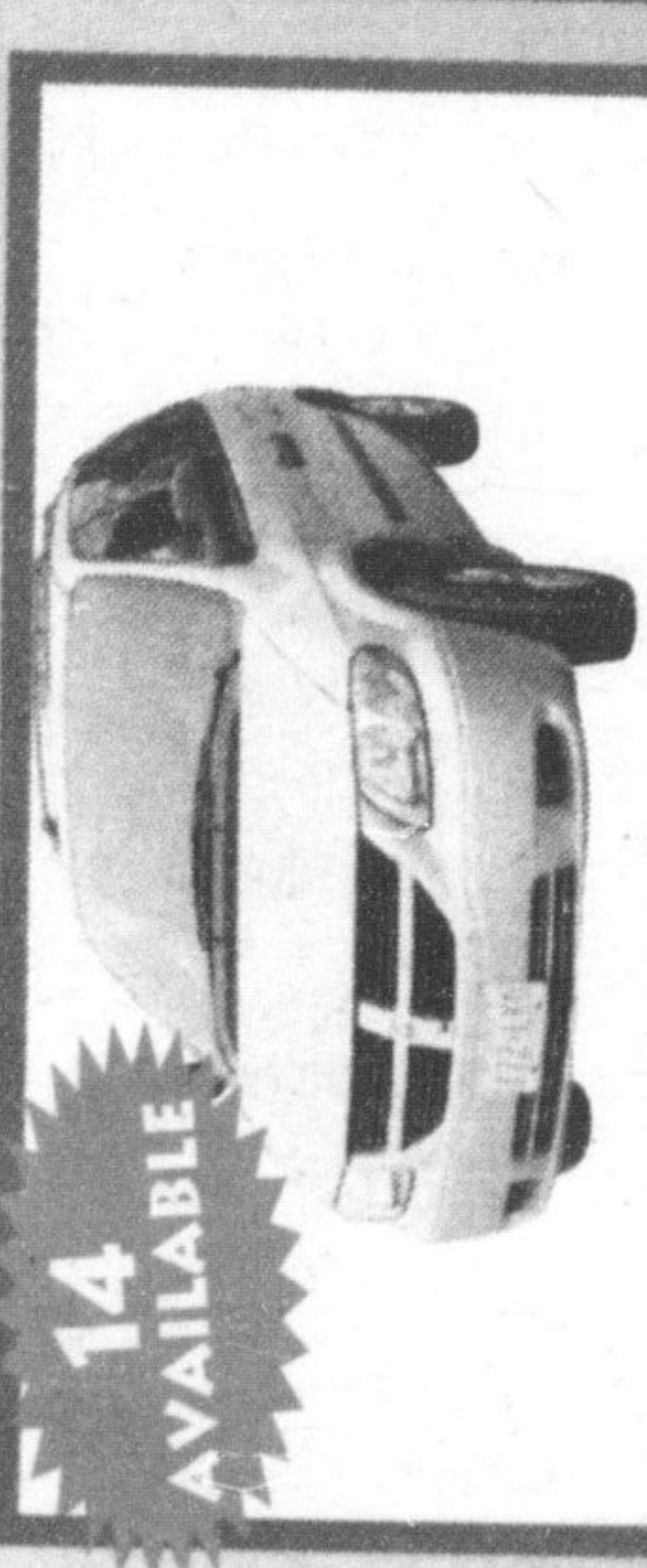
- 4L 6 Cyl • Auto • Air
- Power locks & windows
- AM/FM/CD Stereo • Keyless entry

CASH PURCHASE FOR
\$28,050*

2004 Dodge Durango 4x4
Absolutely loaded, leather, power sunroof, 8 passenger seating



2005 Dodge Magnum
Dodge Magnum brilliantly unleashes all of the legendary Dodge excitement with head-turning style and the power of an available HEMI® engine. Featuring upscale amenities and a unique-access rear lift-gate, this latest Dodge opens a new chapter in a storied and much heralded history.



2005 Dodge Caravan

- 3.3L 180hp V6 engine • 7 Passenger seating
- Air • Power windows, locks, and mirrors
- AM/FM/CD stereo • Cruise Control
- Colour keyed fascias
- Multistage driver and front passenger airbags
- Sentry-Key® Theft Deterrent System

LEASE FOR
\$199† A MONTH FOR 48 MONTHS WITH \$4,999 DOWN PAYMENT OR EQUIVALENT TRADE



2004 Dodge Grand Caravan

- 6" Extended wheelbase • Quad seating
- Anti-lock braking system
- Power windows, locks & mirrors
- Additional cargo capacity (25.6 cu. ft.)

CASH PURCHASE FOR
\$23,188*
OR LEASE FOR
\$220† A MONTH FOR 48 MONTHS WITH \$4,820 DOWN PAYMENT OR EQUIVALENT TRADE

2004 Jeep Liberty 4x4 LTD
3.7L V6, 4x4, auto, air, mag wheels, pw, pl, keyless entry, leather, loaded



Hunt Chrysler Jeep

Sales: Mon-Thurs 9-9, Fri. 9-6, Sat. 9-5
Service: Mon-Fri 8-5, Tues. 8-8, Sat. 8-12

Milton: (905) 876-2580
Toll Free: 1-866-848-8816
Email: sales@huntchrysler.com

service/partswww.huntchrysler.com

www.huntchrysler.ca



Steeles Ave.	401	Hwy 25	James Snow Parkway	Tralgar Rd.
	Bronte St.	Marlin St.	Main St.	
		Hwy 25		
				Derry Rd.
	HUNT			

Wise customers read the fine print: *† These are limited time offers which may not be combined with any other offer except Chrysler. Rebate and apply to retail deliveries on new in-stock 2004 vehicles. Retailer order/trade may be necessary. Retailer may sell/lease for less. See retailer for complete details and conditions. †% purchase financing for up to 36, 48, and 60 months on select 2004 Chrysler, Jeep and Dodge vehicles. Example: \$30,000 @ 0% APR for 48-month term, monthly payment is \$624.66/\$35,000. Cost of borrowing is \$0. Total obligation is \$30,000. If customer chooses 0% purchase financing, they/long incentives available to cash purchasers. The effective interest rate on 0% financing is 3.99% for 2004 Chrysler, Jeep and Dodge vehicles. Example: \$30,000 @ 3.99% APR for 48-month term, monthly payment is \$654.66/\$35,000. Cost of borrowing is \$0. Total obligation is \$30,000. Excludes freight (\$950 for Grand Cherokee, \$900 for Sebring, \$995 for Intrepid). License, insurance, taxes, registration, retailer charges and PPSA @ Jeep is a registered trademark of DaimlerChrysler Canada Inc., a wholly owned subsidiary of DaimlerChrysler Corporation. *Rebate applies to 2004 Grand Cherokee.