



THE CORPORATION OF THE TOWN OF MILTON

TTY: 905-878-1657

905-878-7252

Milton Online

www.milton.ca

### Application Analyst (1 year Contract)

#### Position summary

The Corporate Services Department requires an individual to fill the contract position of Application Analyst. This position is responsible for system administration, application support, report development/data extraction, and second level end-user support for key corporate Oracle-based applications. The Application Analyst will assist the Database Coordinator with database back-up and recovery, application installation and testing, and database error/problem resolution.

#### Major job responsibilities

- Provide change control support for corporate applications
- Develop custom reports and deploy end-user report writer
- Provide end-user application support for AMANDA and CLASS
- Assist Database Coordinator with database support activities
- Assist with implementation of effective and efficient IT operations by participating in group's operational support initiatives

#### Education and experience

Applicants should have a college diploma in computer science as well as 2 years experience as an application support specialist in an Oracle and Microsoft network environment. Proficiency in MS Visual Basic, C, PL/SQL, Oracle Discoverer, and Crystal reports is required. Working knowledge of Windows 2000, client-server networking, Microsoft Office, and Outlook required.

Salary range: \$53,723 to \$63,204

Interested applicants should submit a resume by **September 10, 2004** to: Town of Milton, Department of Corporate Services, 43 Brown St., Milton, Ontario L9T 5H2

Attention: Coordinator, Human Resources

Fax: (905) 878-4231

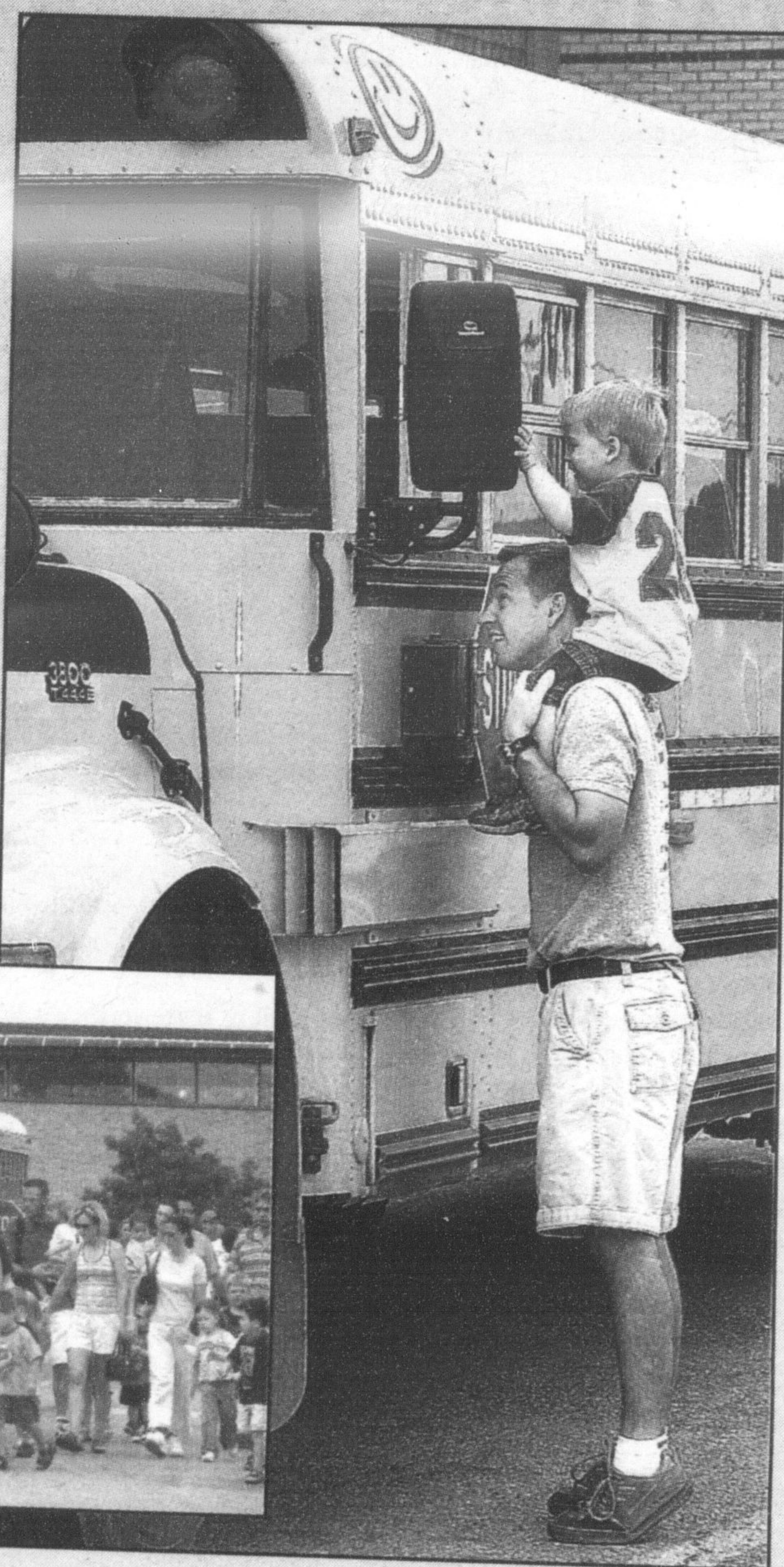
E-mail: humanresources@milton.ca

In accordance with the Freedom of Information and Privacy legislation, applicant information is collected under the authority of the Municipal Act and will be used strictly for candidate selection.

## Ready to ride

Two-year-old Gabe Coulombe gets a peek inside the driver's window of a school bus atop dad Ken's shoulders while older brother Andre was inside attending a school bus orientation session Saturday morning at Bishop Reding Secondary School. Below, parents and their children tour one of the two buses prior to heading out on a short ride. The information session for first-time bus riders and their parents included a movie and a short bus ride to alleviate any jitters prior to the start of the school year next Tuesday.

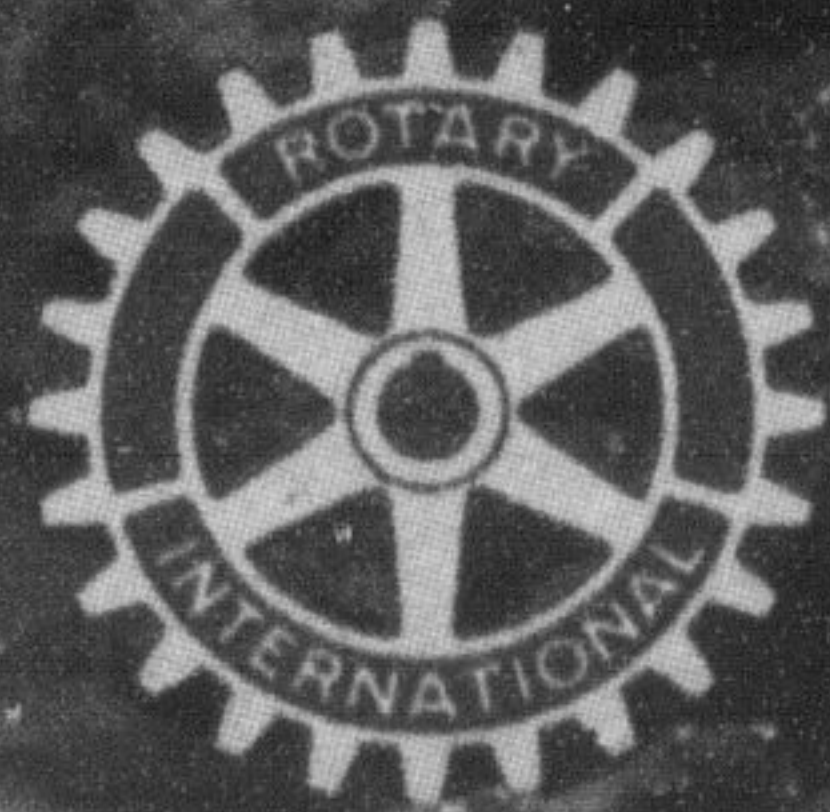
Photos by GRAHAM PAINE



MAPLE LEAF BOBK

## rotary ribfest

Canada's largest ribfest...  
15 rib teams from  
across North America



Maple Leaf Pork  
Rotary Ribfest  
BBQ Cookoff

Crafts • Live Music  
Children's Activities

Free Admission

Labour Day Weekend

September 3 - 6, 2004 • Spencer Smith Park, Burlington

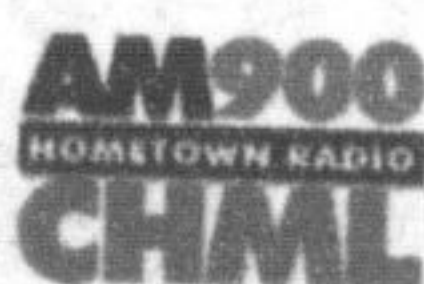
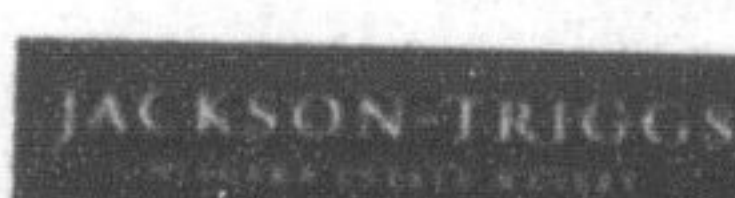
For Parking, Directions or Accommodation see:

[www.burlingtonribfest.com](http://www.burlingtonribfest.com)

or Contact Burlington Tourism at:

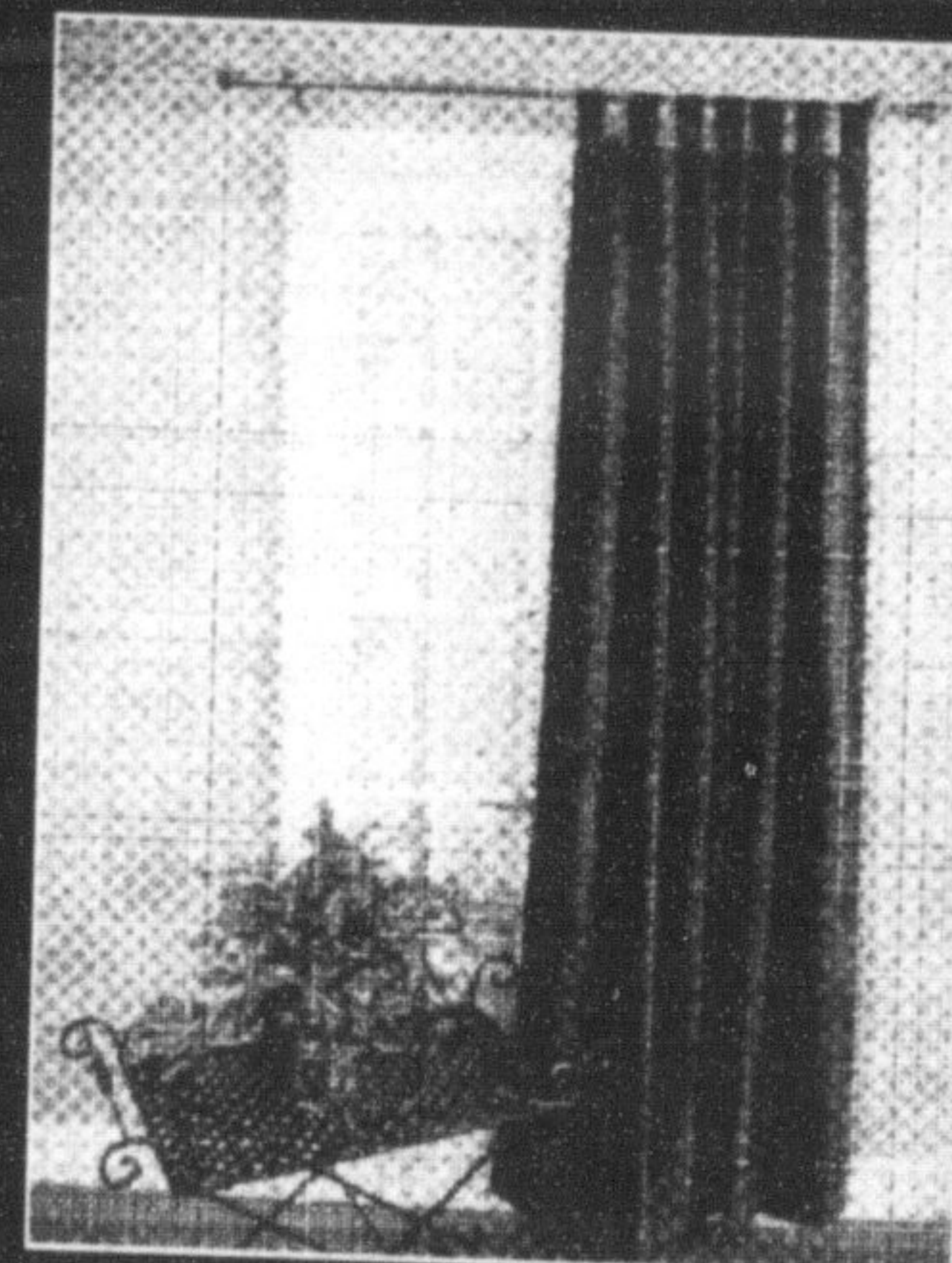
905-634-5594 or Toll Free: 1-877-499-9989

Rotary Club of Burlington Lakeshore



## FABRICLAND

Sale on now!  
Hurry in  
for best selection!



### Look At Us Now! Check out our NO-SEW, READY-TO-GO HOME DECOR!

- Drapery Hardware - Rods, Finials, Sconces & more!
- Ready-to-hang Curtains - tab top and rod pocket
- 100's of Decorative Home Accessories & Accents: Pots & planters, storage chests, baskets, frames, cushions & cushion shells & more!
- White Bedding - Comforters, pillows, mattress pads (not available at all locations)
- And for the do-it-yourselfer, 1000's of metres of Drapery, Upholstery, Home Decor & Quilting Fabrics for every taste & application!

Special Selection!  
**CREATIONS "Ready-to-Go"**  
DRAPERY PANELS  
Individually priced.  
**NOW 50% OFF Our Reg. Price**

**HOME DECOR FABRICS by the metre**  
Special Selection!  
PHOENIX VOILE SOLIDS 300cm wide.  
Our Reg. 14.98 m NOW 5.99 m  
**BETTER THAN HALF PRICE!**  
Special Selection!  
MATISSE FANCY ORGANZA 150cm wide.  
Our Reg. 12.98 m NOW 4.99 m  
**BETTER THAN HALF PRICE!**  
Special Selection!  
DERBY JACQUARDS 140cm wide.  
Our Reg. 16.98 m NOW 6.99 m  
**BETTER THAN HALF PRICE!**  
Special Selection!  
MARTINA CHENILLES 140cm wide.  
Our Reg. 16.98 m NOW 6.99 m  
**BETTER THAN HALF PRICE!**  
Special Selection!  
ROCCO JACQUARDS 140cm wide.  
Our Reg. 14.98 m NOW 5.99 m  
**BETTER THAN HALF PRICE!**  
Special Selection!  
SHALIMAR DRAPERY LINING 140cm wide.  
Our Reg. 8.98 m NOW 4.49 m

**BASIC & FASHION FABRICS by the metre**  
Special Selection!  
PLAIDS, PLAIDS, PLAIDS 150cm Classic  
tartan looks & fashion plaids in versatile  
polyester/viscose. Great for sportswear &  
children's wear. Reg. 12.98 m NOW 4.99 m  
**BETTER THAN HALF PRICE!**

Special Selection!  
WOOL/WOOL BLEND TROPICAL SUITING  
150cm wide. Assorted light weight qualities  
in many colours, individually content labeled.  
Our Reg. 14.98 m NOW 6.99 m  
**BETTER THAN HALF PRICE!**

Special Selection!  
PLAID BRUSHED SHIRTING 110cm wide,  
100% cotton in assorted designs & colors.  
Our Reg. 8.98 m NOW 4.44 m  
**BETTER THAN HALF PRICE!**

Special Selection!  
**ARCTIC FLEECE PRINTS**  
150cm wide, 100% polyester in  
assorted designs. Our Reg. 19.98 m  
**NOW 8.99 m**  
**BETTER THAN HALF PRICE!**

Our Entire Stock of  
**CRAFTS & QUILTING FABRICS**  
115cm 100% cotton & blends. Monotones,  
shadows, tie-dye, solids, quilted baby panels  
& coordinates. Individually priced.  
**NOW 33% OFF Our Reg. Price**

Special Selection!  
**GÜTERMANN THREAD**  
100m spool. Reg. 1.78 ea. Now 99¢ ea.  
250m spool. Reg. 3.59 ea. Now 1.99 ea.

Entire In-Store Stock!  
**NEW LOOK PATTERNS - 1.99 ea.**  
Offer valid September 7-12, 2004, in-stock only.  
Not valid with any other discount offers.

**FILL OUT A  
BALLOT TO  
WIN!**  
**OVER \$36,000**  
WORTH OF FABRICLAND GIFT  
CERTIFICATES TO BE WON!  
We're giving away one \$200  
Fabricland Gift Certificate per week  
per participating store for three  
weeks! No purchase necessary. Must  
be 18 years or older. Details in-store.

**LAST CALL  
CLEARANCE CONTINUES!**  
SAVE UP TO **75%** OFF OUR ORIGINAL PRICES  
ON SELECTED SPRING & SUMMER CLEARANCE  
Look for the red sale tags. All sales final. Details in-store.

Sale in effect until September 19 at participating Ontario locations, on selected in-stock merchandise.  
**547 Main St. E. MILTON 878-0931**