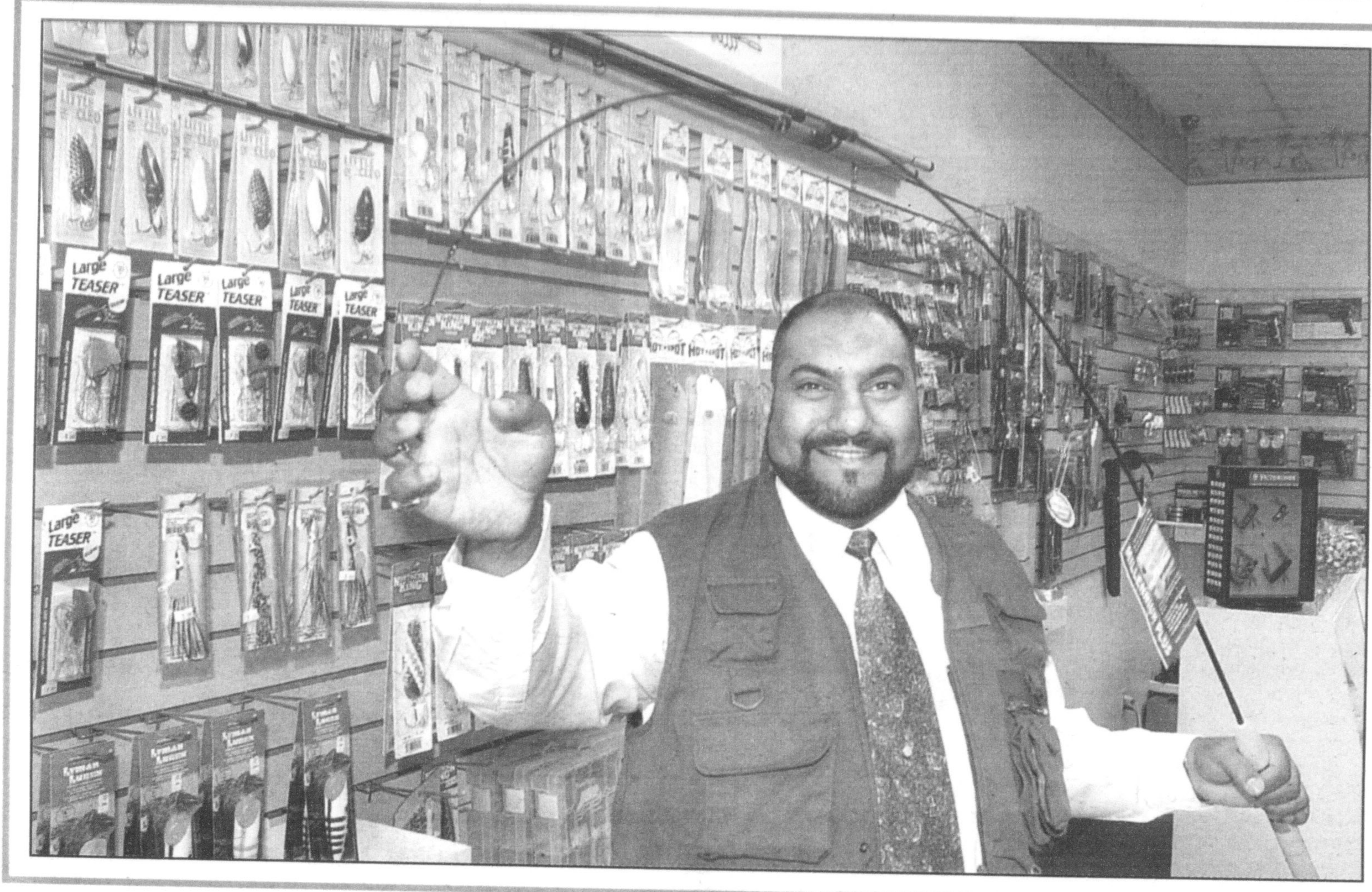


# Milton • Means Business



## New store luring them in

Amir Ahmad, operations manager for Guns & Hooks, is all smiles during the Ontario Street store's grand opening Saturday. Guns & Hooks — which opened its doors in March — sells a wide assortment of fishing and hunting gear.

Photo by  
GRAHAM PAINE

## Roxul recycling plant now in full operation

*Huge savings in waste expected with new facility*

A new recycling plant at Roxul Inc. may eliminate as many as 500 truck loads of waste in its first year alone.

In fact, according to a Roxul spokesperson, the company is on track to eliminate almost all the production waste that was going to the landfill.

With the \$3 million recycling plant now in operation, waste materials are being collected throughout the manufacturing process and safely re-used in the production of insulation for commercial, industrial and retail markets.

The benefits of the new 10,000-square-foot

facility are already being realized, said company president Trent Ogilvie.

"With the opening of the new plant, we can effectively reduce our production waste going to the landfill from approximately 20 per cent to less than one per cent," he said.

"We believe that's a healthy investment, not only in Roxul, but in a cleaner environment," he said.

Roxul products, he said, have led the market in environmental responsibility with their natural-source raw materials and a manufacturing

**"We believe that's a healthy investment, not only in Roxul, but in a cleaner environment."**  
TRENT OGILVIE

process that allows most of the waste to be recycled.

"It's this commitment that earned Roxul the right to display Environment Canada's Eco-Choice symbol on all our products. We're proud

of that accomplishment, and now we've gone another step further."

The benefits of Roxul's waste diversion plant extend beyond the landfill reductions. By retaining an estimated 99 per cent of waste materials for on-site re-use, Roxul will realize significant reductions in raw materials and the energy required to produce them, Mr. Ogilvie said.

In addition, recycling will reduce fuel consumption and carbon emissions produced in the transportation of waste materials to the landfill.

Roxul Inc. is part of Rockwool International, the world's largest producer of mineral wool insulation. It has been part of the Milton business community since 1988.

Matt's

RIB HOUSE

**Mondays**  
**ALL YOU CAN EAT BEEF RIBS**  
ONLY \$16<sup>99</sup>\*\*  
\*Includes choice of 2 sides

**Wednesdays**  
**ALL YOU CAN EAT RIBLETS**  
ONLY \$11<sup>99</sup>\*\*  
\*Includes choice of 2 sides

Fully Licensed!

\*\*Taxes & Gratuities not included.

When you buy one Full Slab  
receive 2nd Full Slab\*  
**AT 1/2 PRICE**  
with this coupon  
1 coupon per visit. \*Sides on 2nd order are extra.  
Expires Aug. 31/04

Buy one dinner entrée & receive one  
**APPETIZER AT 1/2 PRICE**  
with this coupon  
1 coupon per visit. Expires Aug. 31/04

Featuring... MATT'S ORIGINAL BBQ SAUCE!!!  
...mmm Finger Lick'in Ribs!!!

500 Laurier Ave. (A&P Plaza) (905) 878-9190