

## 2005 Echo Hatchback

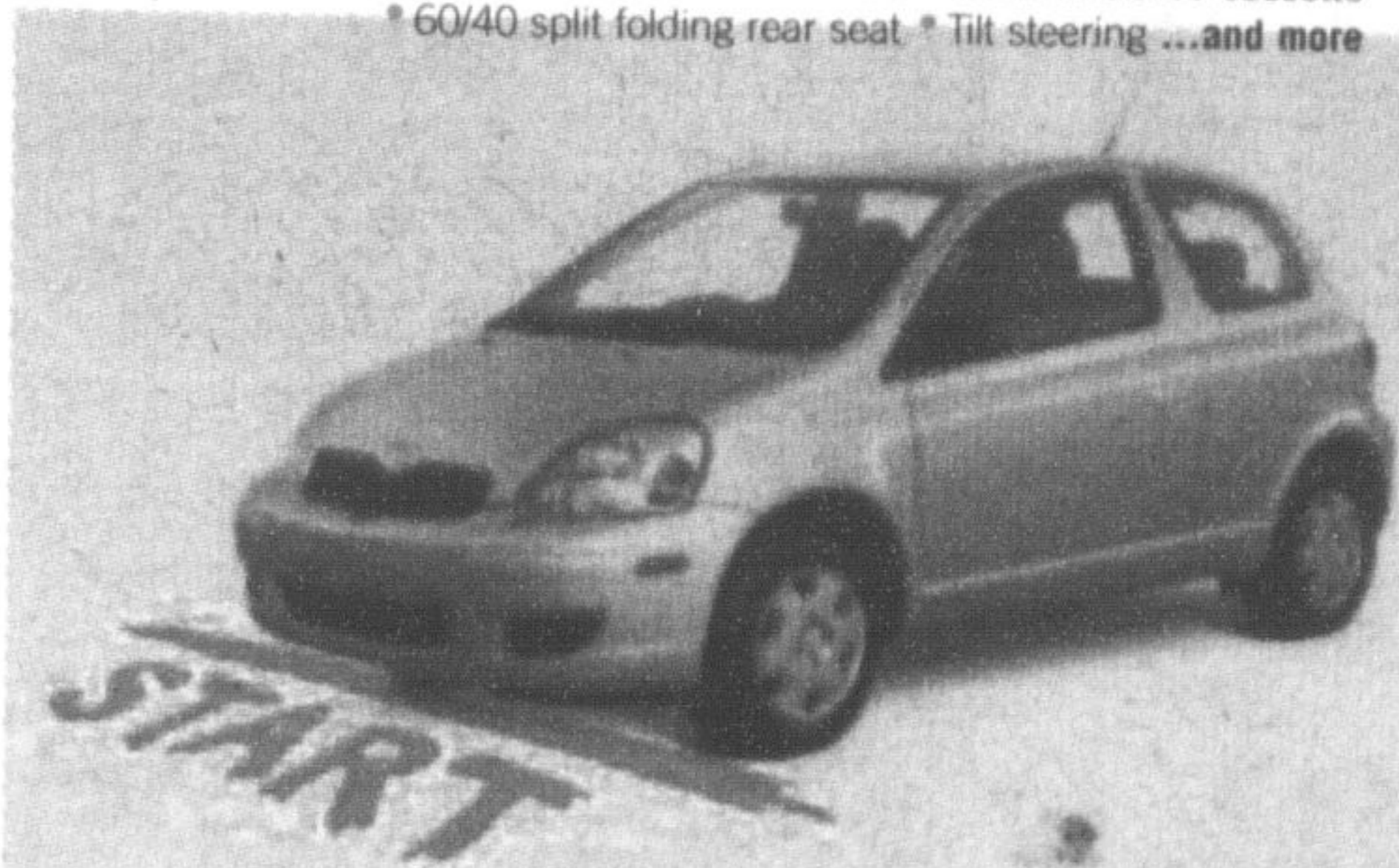
LEASE FOR \$169\*

PER MONTH FOR 60 MONTHS WITH \$1,378 DOWN  
FREIGHT AND P.D.E. INCLUDED

\$12,995 MSRP

Fuel consumption: Hwy 5.2L/100 km (54 mpg)  
City 6.7L/100 km (42 mpg)

\* 5-speed manual transmission \* ABS \* AM/FM Stereo cassette  
\* 60/40 split folding rear seat \* Tilt steering ...and more



DRIVERS

# START YOUR ENGINES

RACE IN TODAY!



## 2005 Corolla CE

LEASE FOR \$205\*

PER MONTH FOR 48 MONTHS WITH \$2,950 DOWN  
FREIGHT AND P.D.E. INCLUDED

\$17,500 MSRP

Fuel consumption: Hwy 5.3L/100 km (53 mpg)  
City 7.1L/100 km (40 mpg)

\* 1.8 L, 130 hp engine  
\* 5-speed manual transmission  
\* Air conditioning \* Tilt steering  
\* Power door locks and mirrors  
\* AM/FM stereo CD \* Keyless entry  
...and more

PLUS

Receive \$100  
tax credit for  
fuel conservation



## 2004 Camry LE

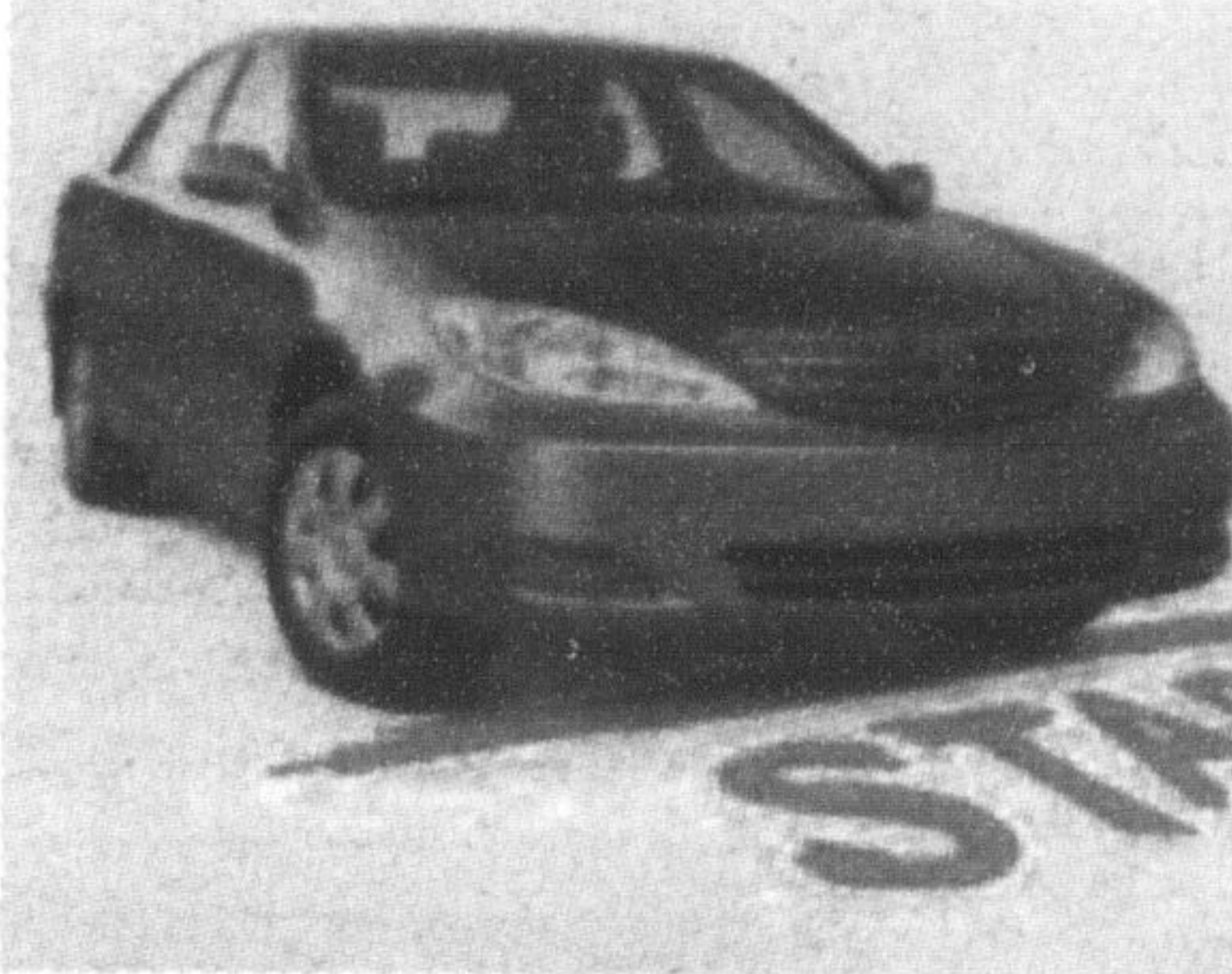
LEASE FOR \$279\*

PER MONTH FOR 48 MONTHS WITH \$4,097 DOWN  
FREIGHT AND P.D.E. INCLUDED

\$24,800 MSRP 1.9% PURCHASE FINANCING

Fuel consumption: Hwy 6.7L/100 km (42 mpg)  
City 10.1L/100 km (28 mpg)

\* 2.4 L, 157 hp engine \* 4-speed automatic transmission  
\* Air conditioning \* Power windows, locks and mirrors  
\* AM/FM stereo CD cassette \* Keyless entry ...and more



## 2004 Sienna CE

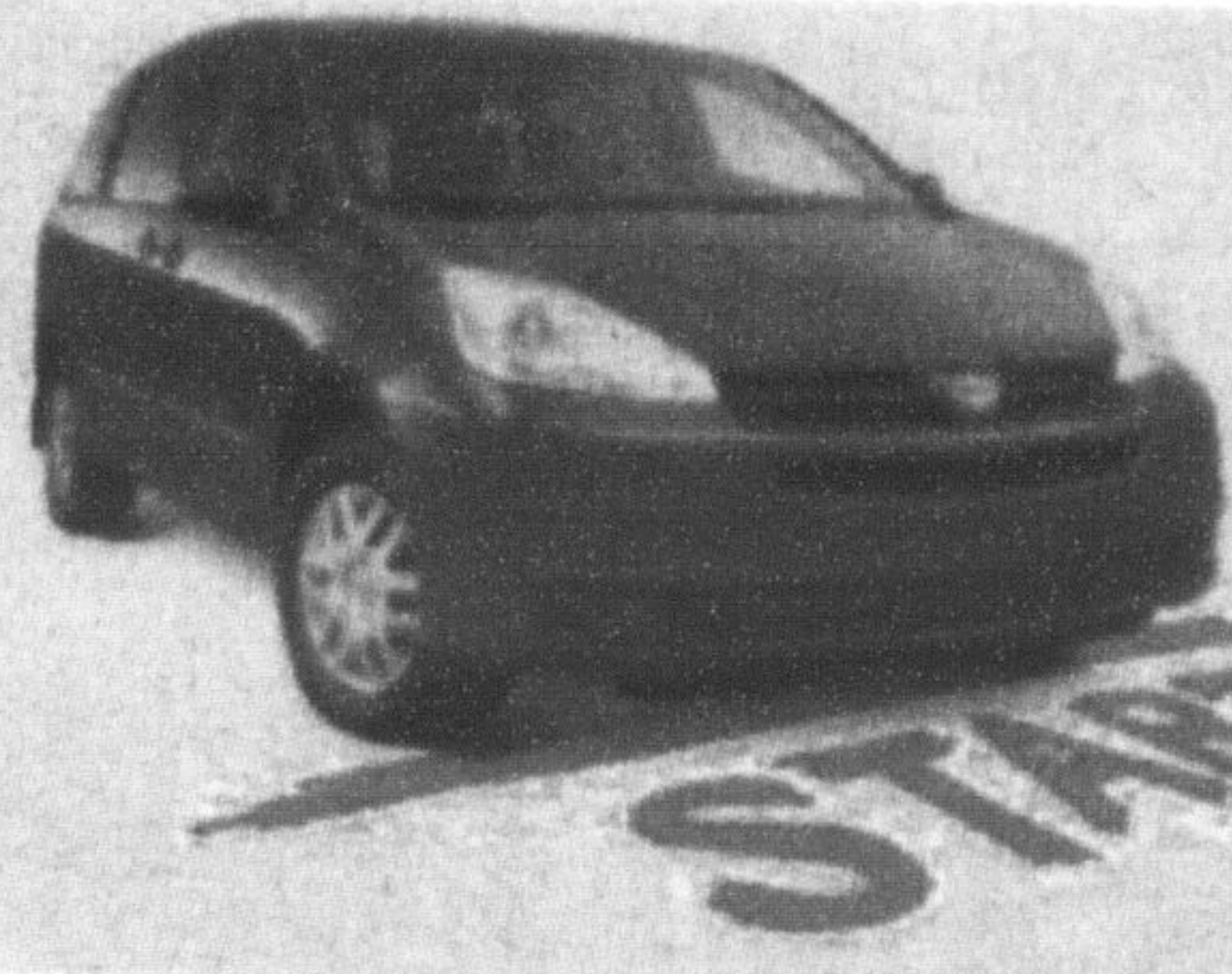
LEASE FOR \$299\*

PER MONTH FOR 48 MONTHS WITH \$5,625 DOWN  
FREIGHT AND P.D.E. INCLUDED

\$30,000 MSRP 3.9% PURCHASE FINANCING

Fuel consumption: Hwy 8.1L/100 km (35 mpg)  
City 12.2L/100 km (23 mpg)

\* 3.3 L, 230 hp engine \* 5-speed automatic transmission  
\* Air conditioning \* Power windows, locks and mirrors  
\* AM/FM stereo CD cassette \* Dual sliding doors ...and more



## 2004 Highlander V6

LEASE FOR \$399\*

PER MONTH FOR 48 MONTHS WITH \$5,180 DOWN  
FREIGHT AND P.D.E. INCLUDED

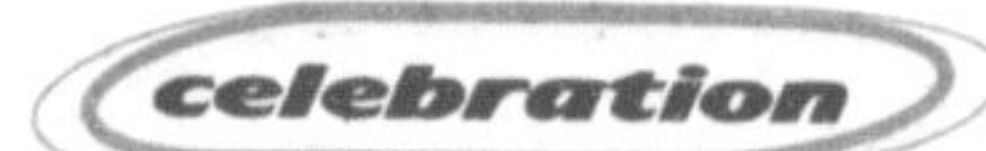
\$36,900 MSRP 1.9% PURCHASE FINANCING

Fuel Consumption: Hwy 9.0L/100km (31 mpg)  
City 12.7L/100km (22 mpg)

\* 3.3 L, 230 hp, V6 engine \* 5-speed automatic transmission  
\* 4WD \* ABS \* Air conditioning \* Power windows, locks and mirrors  
\* AM/FM stereo CD cassette ...and more



TEAM TOYOTA



NO SECURITY DEPOSIT ON ALL LEASES.

MILTON  TOYOTA

400 Steeles Avenue 905 875-1700

www.miltontoyota.com

REAL PEOPLE SELLING GREAT CARS\*

Where can you find your favourite Toyota Dealer? Simply visit us at [www.toyota.ca](http://www.toyota.ca) or call 1-888-TOYOTA-8.

\*1/1 Leasing/financing plans from Toyota Financial Services. O.A.C. Offers valid on 2005 Echo Hatchback/Corolla and 2004 Camry/Sienna/Highlander. License, registration fees, insurance and taxes extra. Lease includes freight and P.D.E. cost of \$360/\$1,010/\$1,110/\$1,260/\$1,260. Freight and P.D.E. not included in MSRP. Based on 60 mos. walkaway lease rate of 6.4% on Echo Hatchback (Model J1123MA). Based on 48 mos. walkaway lease rate of 5.9%/4.9%/2.9%/3.5% on Corolla/Camry/Sienna/Highlander (Models BR32MB/BC32NP/ZA303A/HP21AFA). Down payment of \$1,378/\$2,950/\$4,097/\$5,625/\$5,180 or trade equivalent required. First payment due on delivery. Total lease obligation of \$11,518.66/\$12,700.00/\$17,488.77/\$19,977.07/\$24,332.04 and purchase option price of \$5,327.95/\$6,575.00/\$11,408.46/\$14,400.00/\$17,643.00 based on a maximum of 96,000 kms (120,000 kms for Echo Hatchback). Additional km charge of \$0.07/0.07/10/10/15 if applicable. MSRP of \$12,995/\$17,500/\$24,800/\$30,000/\$36,900. \*Finance example: \$20,000 at 1.9%/3.9% per annum equals \$71.96/\$589.59 per month for 36 months. C.O.B. is \$591.26/\$1,225.24 for a total obligation of \$20,591.26/\$21,225.24. 1.9%/3.9% no limit purchase financing for up to 36 months available on the 2004 Highlander and Camry/Sienna. All rights reserved. These are limited time offers. Please see your participating Toyota Dealer for complete details. Dealer may sell/lease for less.



## New stores in power centre to be announced in August

By MELANIE HENNESSEY

The Champion

By next spring, Milton will be home to a variety of big-box stores that could range from ladies' fashion to shoes and casual apparel, reports the company developing a power centre in the town's east end.

Jonathan Weinberg, vice-president of retail leasing for First Gulf Capital Corporation, said the company is in the conditional stage on deals with some stores, so the names can't yet be released.

"We're pretty close in some deals. By the end of August, we're hoping to announce specific names," he said.

The power centre is located at the southwest corner of Steeles Avenue and James Snow Parkway.

So far, Canadian Tire and Wal-Mart are the only stores publicly known for the shopping centre, which Mr. Weinberg said are set to open this fall.

The Canadian Tire on Market Drive will close when the new location opens its doors. It's estimated the new facility will be about five-and-a-half times bigger than the current store and will have a 15-bay automotive service centre, 9,000-square-foot garden centre and a bigger selection of apparel.

"We're trying to gear more towards the female market. We'll have a significant increase in clothing and footwear," said Jamie Grant, who will take over the local store from long-time owner Drew Mudge in August.

"It will just be a brighter, more shopable store."

### Movie theatre anticipated

As reported in The Champion in May, First Gulf President David Gibson said he's confident a major movie theatre chain will set up shop in the power centre next year, possibly with seven or eight screens.

Mr. Weinberg said they are still in the process of trying to add the theatre to the line-up.

He added deals with a bank and restaurant are also still in the conditional stage.

When construction is complete, Mr. Weinberg said there will be about 15 stores operating at the power centre.

This will fill a need for more retailers in Milton, which has forced residents to venture outside town to shop for some time.

"Obviously, Wal-Mart and Canadian Tire will be the main draws," he said. "The big-box retailers will draw people within a five to 10-mile radius. We're trying to make it the focal point of Milton."

Another retail change set to take place in town is the Zellers expansion at Milton Mall, which could happen this fall.

The mall owners are also proposing to improve and expand the shopping centre, possibly adding more stores. In order to accommodate the expansion, Nipissing Road, which runs beside the mall, will have to be realigned.

Melanie Hennessey can be reached at [mhennessey@miltoncanadianchampion.com](mailto:mhennessey@miltoncanadianchampion.com).