

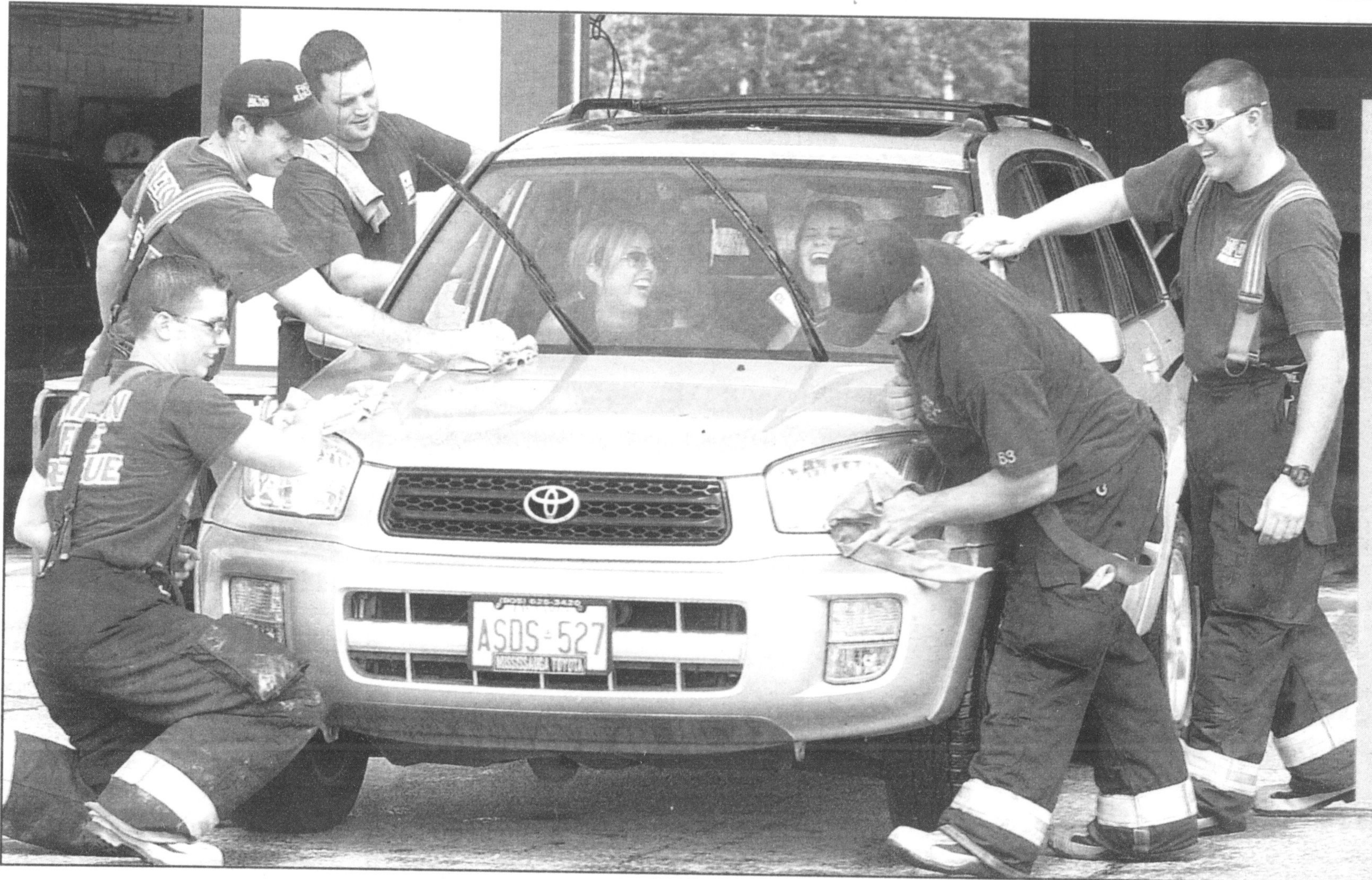


MILTOWNE COLLISION
100% Satisfaction Guaranteed
751 Main Street East, Milton
905-878-6919

The Canadian **Champion**

FAMILY IS WHY YOU DO IT ALL. WE LIVE WHERE YOU LIVE.
Call us today:
Don MacRae, Agent 905-878-8109
Anita Cutaia, Agent 905-878-8871
485 Main St. E., Milton
statefarm.ca
State Farm Insurance Companies
Canadian Head Offices: Scarborough, Ontario

A METROLAND COMMUNITY NEWSPAPER VOL. 145 NO. 35 TUESDAY, JULY 13, 2004 \$1.00 (GST included) 40 PAGES "Using Communication to Build Better Communities"



Good clean fun

Members of the Milton Firefighters Club have some fun while raising money for local charities during a car wash Saturday. The event also included a barbecue.

Photo by GRAHAM PAINE

Residents unhappy that another transit station proposed for 9th Line corridor

By MELANIE HENNESSEY
The Champion

The Ninth Line Owners' Association isn't happy with a change in the plans for an inter-regional transit corridor proposed for land near residents' properties.

The association recently found out that one more transit station — four instead of three — is being looked at for land at Lower Base Line and

Ninth Line that could have up to 800 parking spots and five bus bays.

"That was something that's completely new to us and we have a major problem with it," said association chair Peter Skira. "There's a number of people not happy with the draft."

Halton's Acting Commissioner of Planning and Public Works Jane Clohecy said the station is being considered because it provides a good connection to the Hwy. 407 exten-

sion. "The Lower Base Line station did make sense. It's a great opportunity with its connection to Mississauga," she said.

The transit corridor — which would run west of Ninth Line parallel with Hwy. 407 — and lands surrounding it were examined in a land use study released last month.

The 876-acre study area is framed by highways 401, 403, 407 and the Ninth Line, abutting the City of

Mississauga. Mr. Skira said the association also doesn't agree with the land use designations in the study, which are divided into transit supportive and open space supportive.

"We think it should be all one designation for non-government lands. It just gives a lot more flexibility," he said, explaining the residents prefer all transit supportive, which would allow for medium to high-density • see NEGOTIATIONS on page 4

Inside

Comment6
Champion Country .13-18
Classified21-24
Dateline26

TUESDAY INSERTS
• TUESDAY, JULY 13 •

- Milton Baptist Church* • Rona/Cashway*
- SportsChek* • 9th Line Golf Academy*
- Swiss Chalet*

*Selected areas only

MILTON TOYOTA
www.miltontoyota.com

40% OFF ALL COLOURED GEM JEWELLERY
30% OFF GOLD JEWELLERY 10kt - 14ky - 18kt
25% OFF SEIKO & CITIZEN WATCHES

• PENDANTS • EARRINGS
• RINGS • BROOCHES
• BRACELETS

ANNUAL PRE INVENTORY SALE

* Sale prices apply to in stock items only.

HALTON HILLS Fine Jewellery
(Formerly The Gold Connection)
218 Main St., Milton 905-875-2999

Anita Mike Sue Liz

Taylor Nursery
FLOWERS • SHRUBS & TREES
GARDEN DECOR • SOILS
Right at the east end of Main St.
7429 Fifth Line, Milton 905-876-4100
Your Town and Country Gardening Centre