

2003's - 2004's - 2005's INVENTORY Sell-Off!



Chrysler Pacifica

Dodge Caravan

Chrysler Concorde

Chrysler 300

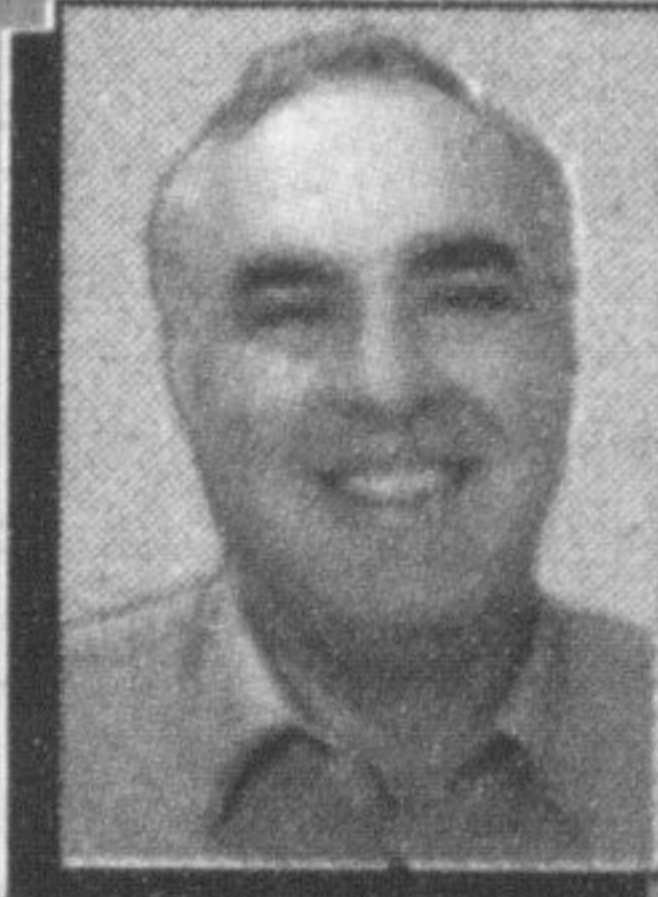
Chrysler 300M

Dodge Magnum

Chrysler Intrepid

Come Meet Our
Professional,
Dedicated
Sales Team

With Over
100
YEARS
Combined
Automotive
Experience!



**Gary Wants
Your Business!**

**WE ARE #1
Milton's
GOLD KEY
DEALER!**

0%

Purchase
Financing

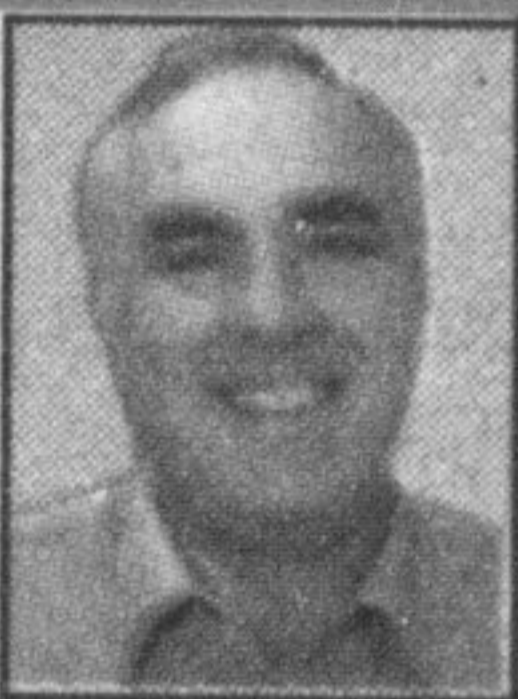
0%

Lease
Financing

Rebates up to
\$6,000



Dodge Magnum
Be the first to
Test Drive one!



Gary Hunt
PRESIDENT



Myke Ward
SALES MANAGER



John Pinney
BUSINESS MANAGER



Todd Landry
SALES ASSOCIATE



Sandy Peden
SALES ASSOCIATE



Allan Giles
SALES ASSOCIATE

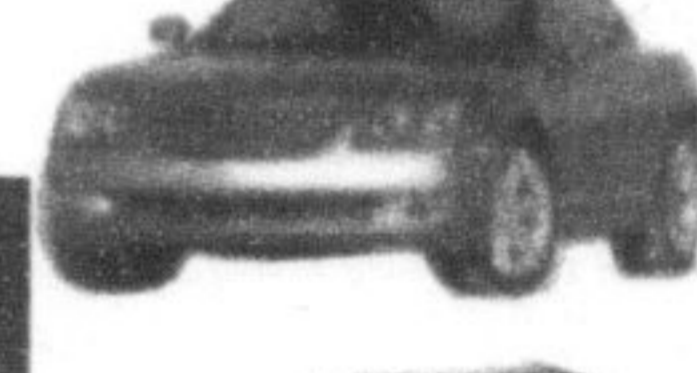


Charles McCarroll
SALES ASSOCIATE

URGENT NOTICE

NO FALSE PROMISES

NO GIMMICKS!



ARE YOU CURRENTLY LEASING A DAIMLER CHRYSLER VEHICLE THROUGH CHRYSLER FINANCIAL?

IF YOUR PRESENT LEASE EXPIRES BY SEPTEMBER 30TH 2005

YOU COULD BE DRIVING A NEW 2004 OR 2005 CHRYSLER TODAY!

YOUR REMAINING 15 PAYMENTS WILL BE WAIVED AT NO ADDITIONAL COST TO YOU!

THIS IS A LIMITED TIME OFFER!!

CALL TODAY 905-876-2580

S.W. MILTON'S ONLY GOLD KEY LEASE DROP OFF DEALER!

WANTED: Good People With Bad Credit. Let Hunt Chrysler Help Reestablish Your Credit!

• Bankruptcy • Divorce • Poor Credit • Disability/Pension We Can Help!! You Could Be Driving..... A New Vehicle Today!

Hunt
Chrysler Jeep

Sales: Mon-Thurs 9-9, Fri. 9-6, Sat. 9-5
Service: Mon-Fri 8-5, Tues. 8-8, Sat. 8-12

service/partswww.huntchrysler.com

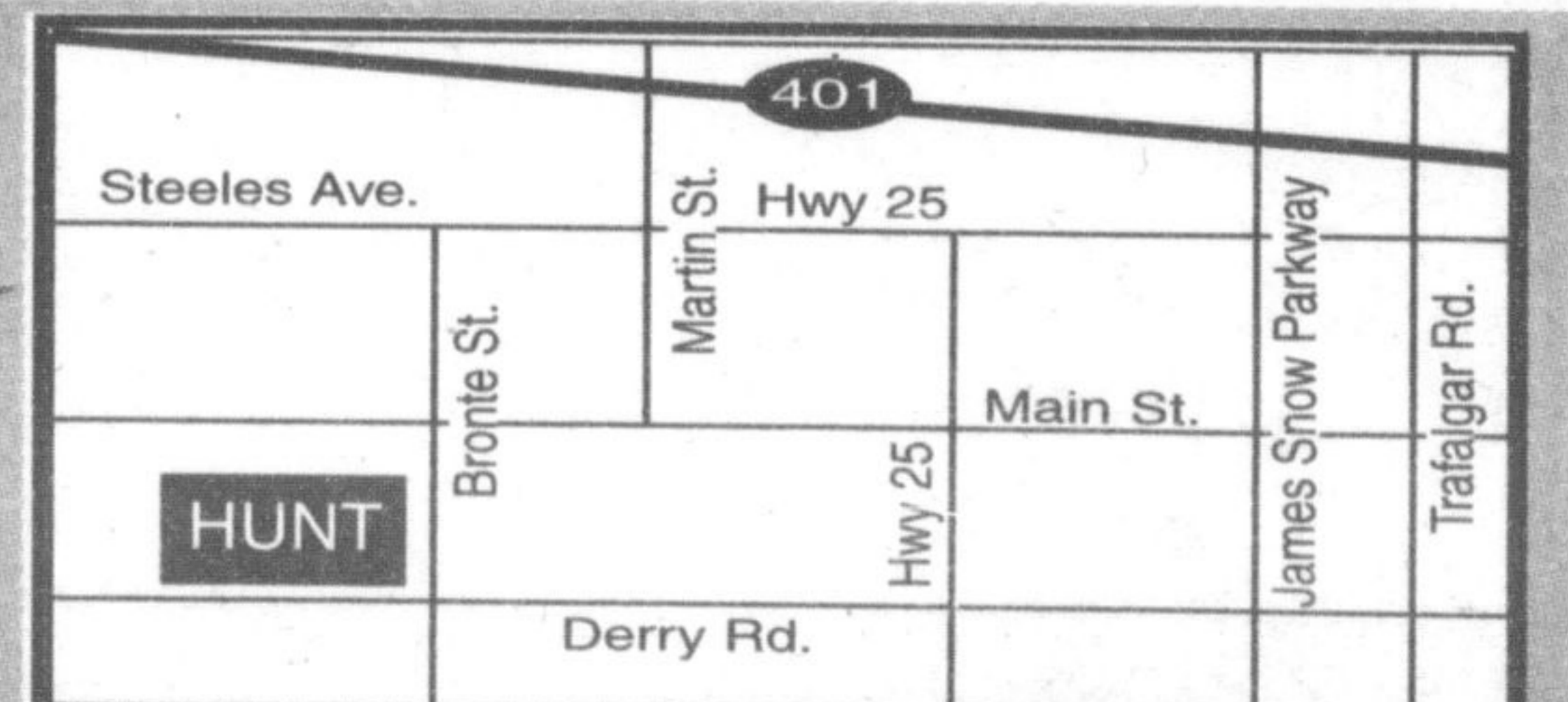


500 Bronte St. S.

Milton: (905) 876-2580

Toll Free: 1-866-848-8816

Email: sales@huntchrysler.com



www.huntchrysler.ca

VISIT YOUR NEIGHBOURHOOD CHRYSLER, JEEP®, DODGE RETAILER OR DAIMLERCHRYSLER.CA Wise customers read the fine print: To qualify your current Chrysler Financial Canada lease must mature between July 1st, 2004 and September 30, 2005. *Lease return...Customer must lease or purchase through CFC any new 2003/2004 or 2005 Chrysler Vehicle. Customer must honour all contractual lease obligations including past-due lease payments, excess wear and tear charges, and pro-rated excess kilometre obligations. ** † † See retailer for complete details.