

Visit us on the web at [www.miltonchrysler.com](http://www.miltonchrysler.com)

# ATTENTION TO ALL CHRYSLER LEASE CUSTOMERS

If your current lease expires between July 1, 2004 and September 30, 2005 you may qualify for Chrysler's 'Pull Ahead Program'. Basically, Chrysler will waive all of your remaining payments to allow you to finance or lease any new vehicle at today's lower interest rates.†



Get **0%**

Finance or Lease Rates on a wide selection of new vehicles

This is an unprecedented, once in a lifetime deal that Chrysler customers just can't pass up. Hurry offer expires July 31, 2004

**2005 CHRYSLER PT CRUISER CONVERTIBLE**



Free Lifetime Oil Changes

CASH PRICE FROM \$26,995

STARTING FROM ONLY

**\$328<sup>††</sup>**

per month  
ZERO DOWN  
48 m. lease

Milton Chrysler is your official Chrysler Gold Key Drop off centre in the area.

You can make arrangements with us no matter where you leased your current vehicle.

**Bonus** All Customers receive free lifetime oil changes exclusively here at Milton Chrysler Dodge Jeep.

**2004 Dodge Grand Caravan SUPER SIZED**



Free Lifetime Oil Changes

BRAND NEW!

**0%** Purchase Financing Up To 60 mos.

PLUS...

**\$2,000 CASHBACK**

Cash Sale Price Only... **\$23,565<sup>††</sup>**

- 28 C Pkg • Air Conditioning • Sunscreen Glass • Quad Captain Seating • AM/ FM/ CD Stereo • Power windows, door locks & defrosting mirrors • 4 wheel anti-lock brakes • Tilt steering • Speed Control • Roof Rack • Floor Mats • 3yr / 60,000 km Bumper to Bumper Warranty • 7yr / 115,000 km Powertrain Warranty with 24 hr Emergency Roadside Assistance

**\$195<sup>††</sup>**

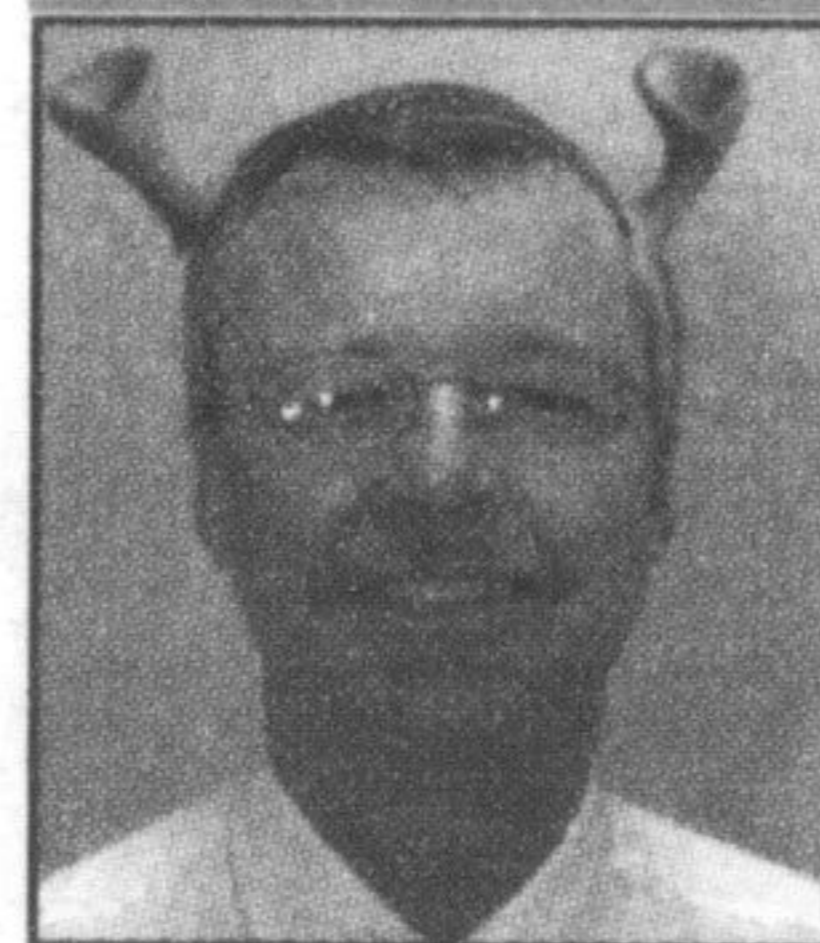
per month  
48 m. lease  
w/\$5000 Down

**BONUS: GET FREE LIFETIME OIL CHANGES#**

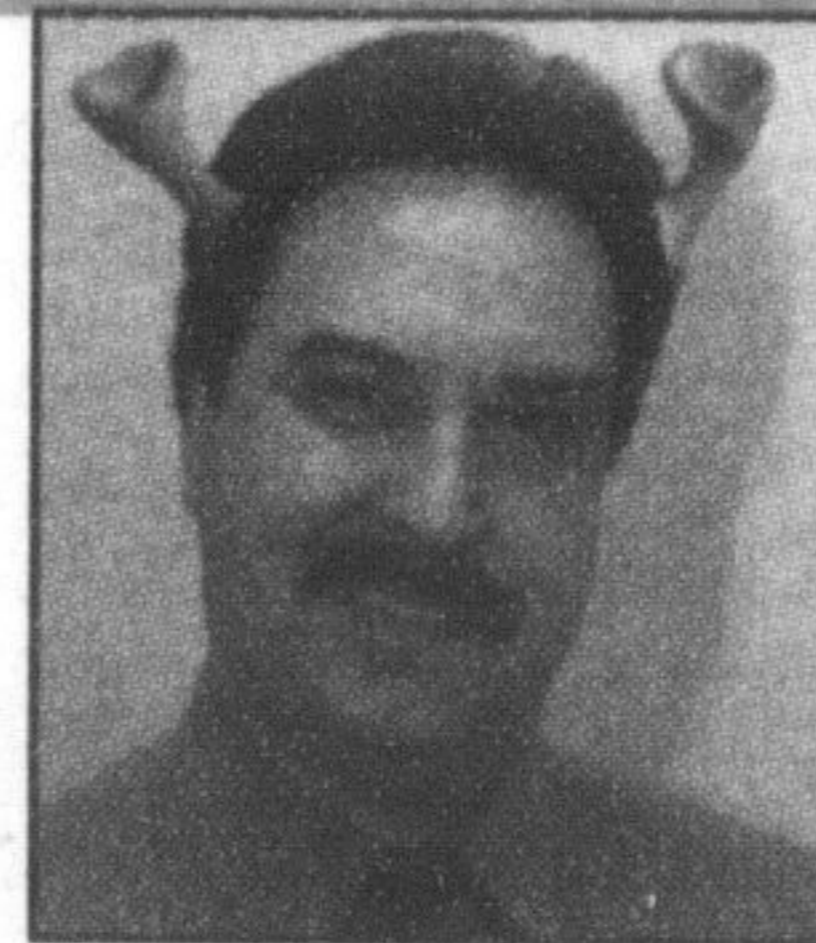
WITH EVERY NEW & USED VEHICLE PURCHASE/ LEASE EXCLUSIVELY AT MILTON CHRYSLER



MILTON CHRYSLER, IS YOUR OFFICIAL GOLD KEY PULL AHEAD PROGRAM HEADQUARTERS



Sean Gibson



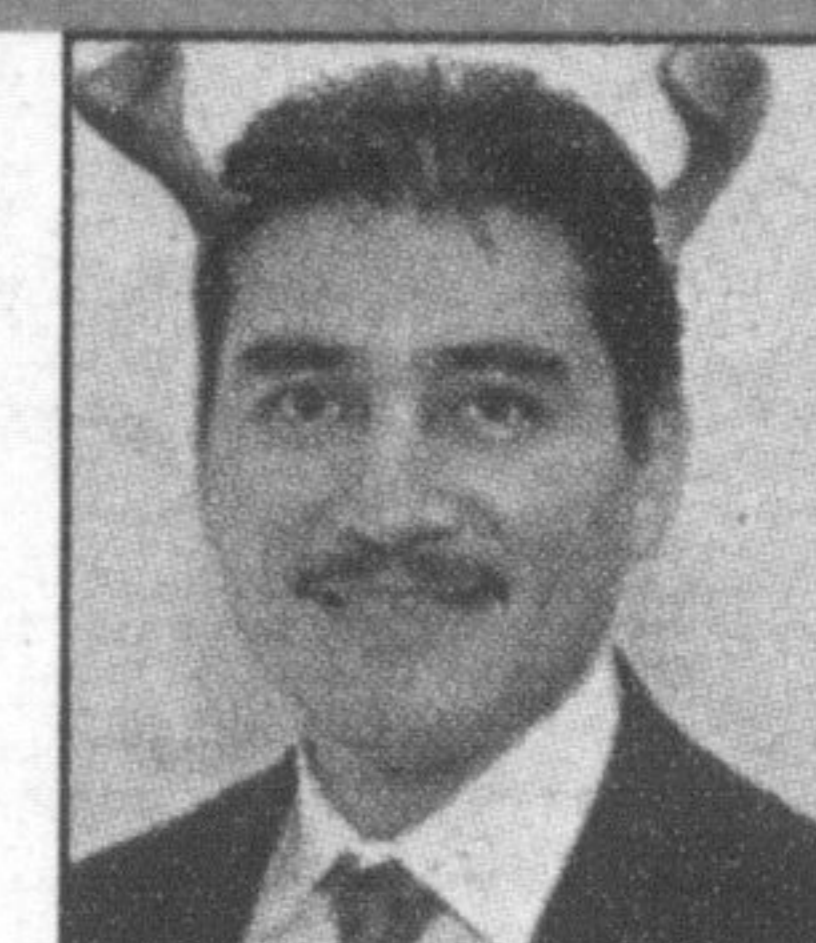
Joe De Oliveira



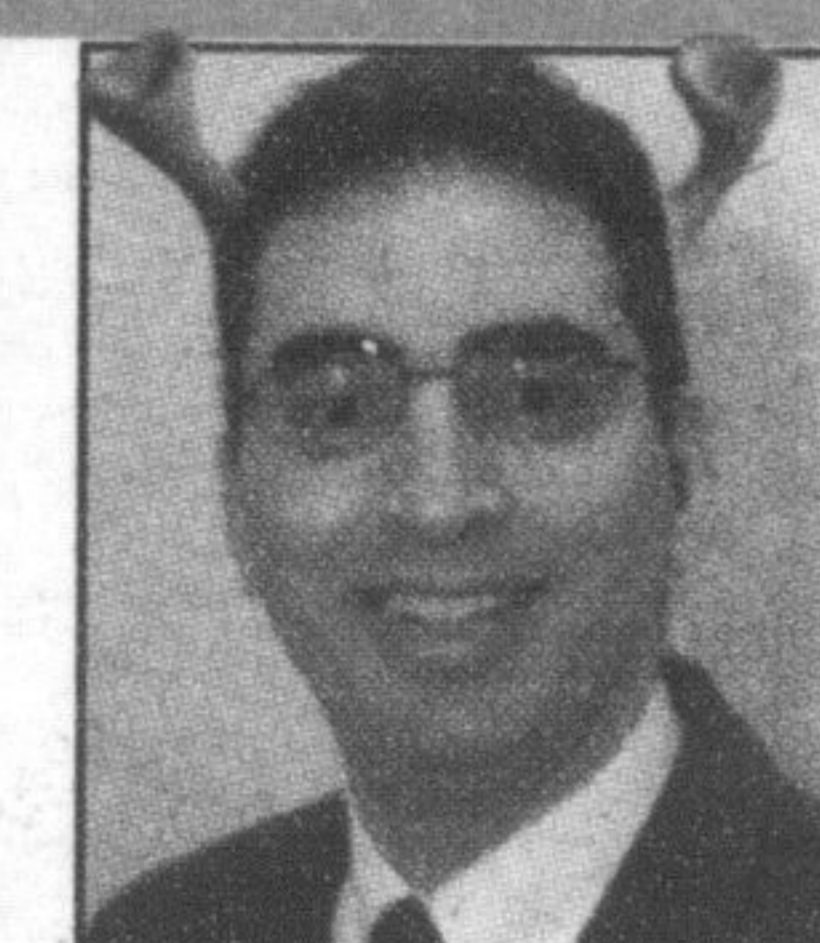
Dwain McGillivray



Ray Dunbar



Alex Medina



Phil Clantar



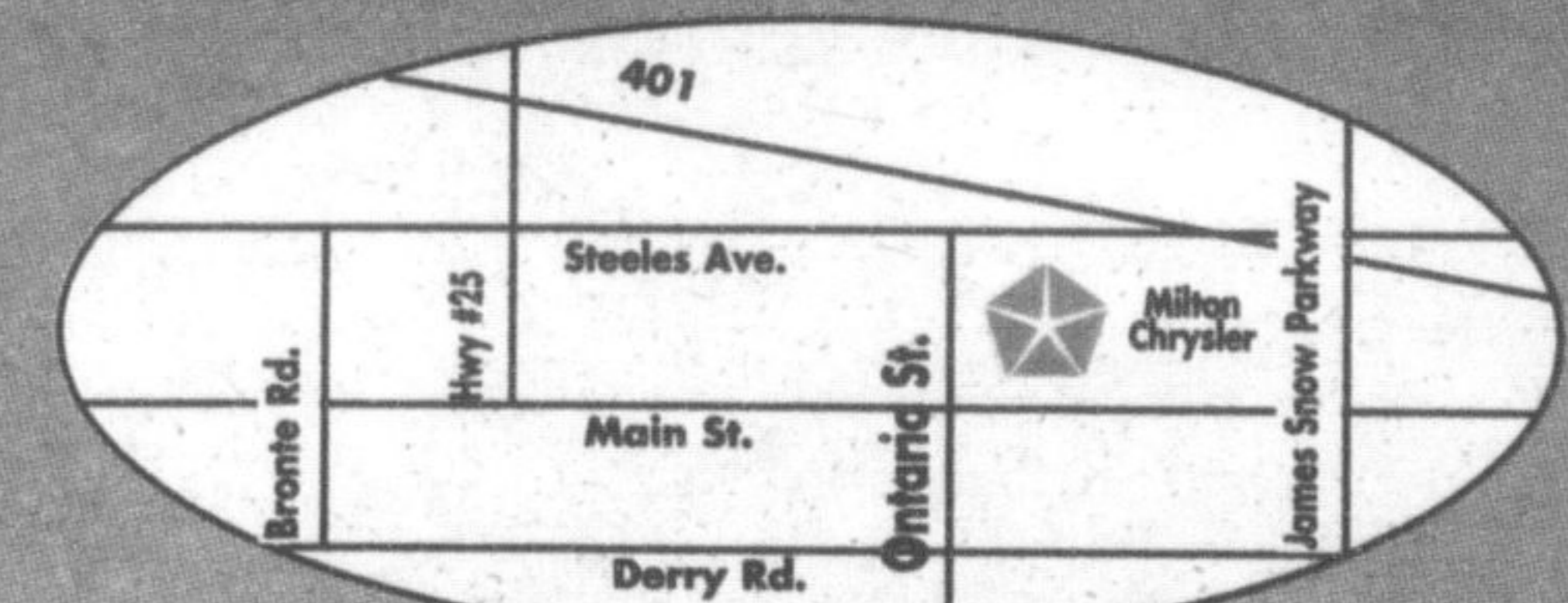
**Milton**  
CHRYSLER • DODGE • JEEP

"WE SELL SATISFACTION"

**905-878-8877**

**81 ONTARIO ST. N. MILTON**  
one block north of the Milton Mall

Visit us at [www.miltonchrysler.com](http://www.miltonchrysler.com)



†See dealer for complete details. \* Rating based on Chrysler End of Year 2003 SSI rating for our dealer group. #Excludes diesels & SRT models & synthetic oil. See dealer for details. ††Cash sale price incl. FDA, add for admin fee, applicable taxes & lic fee + freight. Lease based on 48 mth term. Due at lease signing, first payment, admin fee, applicable freight, lic. + taxes. \$1,000 km allowance for team. Excess km charge \$0.15 + applicable taxes. Walk away lease, optional buy back. OAC. See dealer for details. \*\*Finance rates + terms as shown. May not be combined with FDA or lease rates. OAC. See dealer for details. ##Finance, lease rates + FDA are mutually exclusive and may not be combined. Visit dealer for details for your particular model.