

Local businesses set to clash in charity softball showdown

Just who prevails tonight at Brian Best Park is anyone's guess. But what's for certain is that Halton Women's Place will be the big winner, with three local businesses kicking a collective \$500 its way in conjunction with a charity softball showdown.

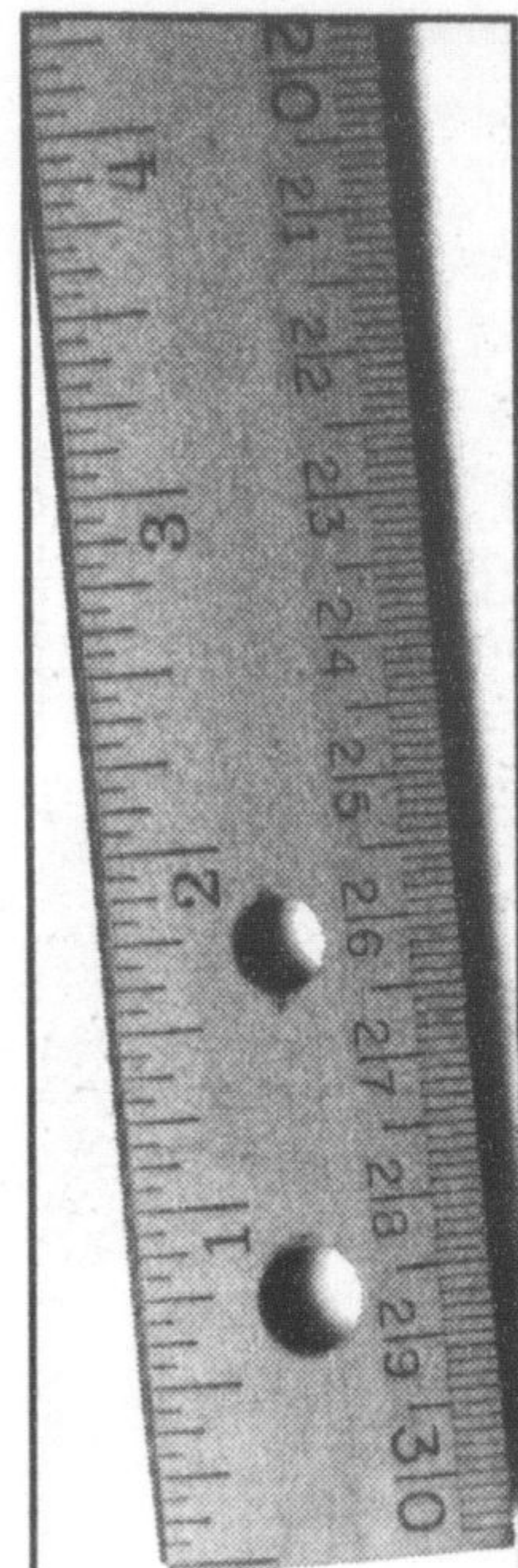
Milton Toyota and Gorrud's Auto Group will join forces against Milton Home Hardware Building Centre. The two sides square off at 7 p.m. "This is a great way for us to reach out and do something positive for our local community," explained Milton Toyota general manager Chris

Gorman. "As opposed to just writing a cheque, we thought we should try and stimulate our corporate neighbours to get involved in a joint effort."

Added Milton Home Hardware owner Angelo DeMedicis, "I always listen to ideas that can

benefit the Milton community, and this one had me hooked from the beginning."

To add extra incentive to the game, Subway will donate two six-foot subs to the winning team — which will be delivered to their place of business by the losing side one day next week.



Whether you're buying or selling, the Classifieds has it all. From automobiles and employment to real estate and household goods, you'll find everything you need in the Classifieds. Put the Classifieds to work for you, and inch even closer to your goals.

The Classifieds... measuring up to your expectations one ad at a time.
Are you searching for a better job or a more reliable car? Have you outgrown your apartment? Are you looking to get rid of that old couch and chair sitting in the garage?

WE'RE ON THE WEB

www.haltonsearch.com

Got The June Bug!

Perfect Matches

4" Geraniums **1⁷⁷**
Reg. 2.79

12" Mixed Hanging Basket
or
12" Planter Tub

16⁹⁹
Reg. 21.99

One Flaming Sale
30% OFF
On All Outdoor Natural Lighting Accents
This deal is smokin'

All Pond Pumps **30% OFF**

4 Pack Begonias

59¢ Each OR **6⁹⁹** Tray - 12 Packs

This isn't a blackout
All Black Pots **30% OFF**

Can you dig it?
Pond Liner
45 mil. EPDM **57¢**
per square foot

All 2 Gal. Spirea **9⁹⁹**
Reg. 14.99

1 Gal. Astilbe **4⁹⁹**
Reg. 9.99

3 Gal. Boxwood **12⁹⁹**
Reg. 39.99

2 Gal. Roses **7⁹⁹**
Reg. 13.99

4' Hakuro Nishiki Willow Standard **39⁹⁹**
Reg. 59.99

Selected 1 Gal. Vines Trumpet Vine, Honeysuckle or Virginia Creeper **6⁹⁹**
Reg. from 12.99

SALE PERIOD June 3 - 9, 2004

Where colour lives!

<p>Burlington 2273 #5 Hwy. (Dundas) 905.332.3222</p>	<p>Waterdown #8 Fifth Concession East 905.689.1999</p>	<p>Milton 280 Britannia Rd. 905.876.4000</p>	<p>Monday to Friday 8a.m. - 8p.m. Saturday & Sunday 8a.m. - 6p.m.</p>
---	---	---	---

www.terragreenhouses.com