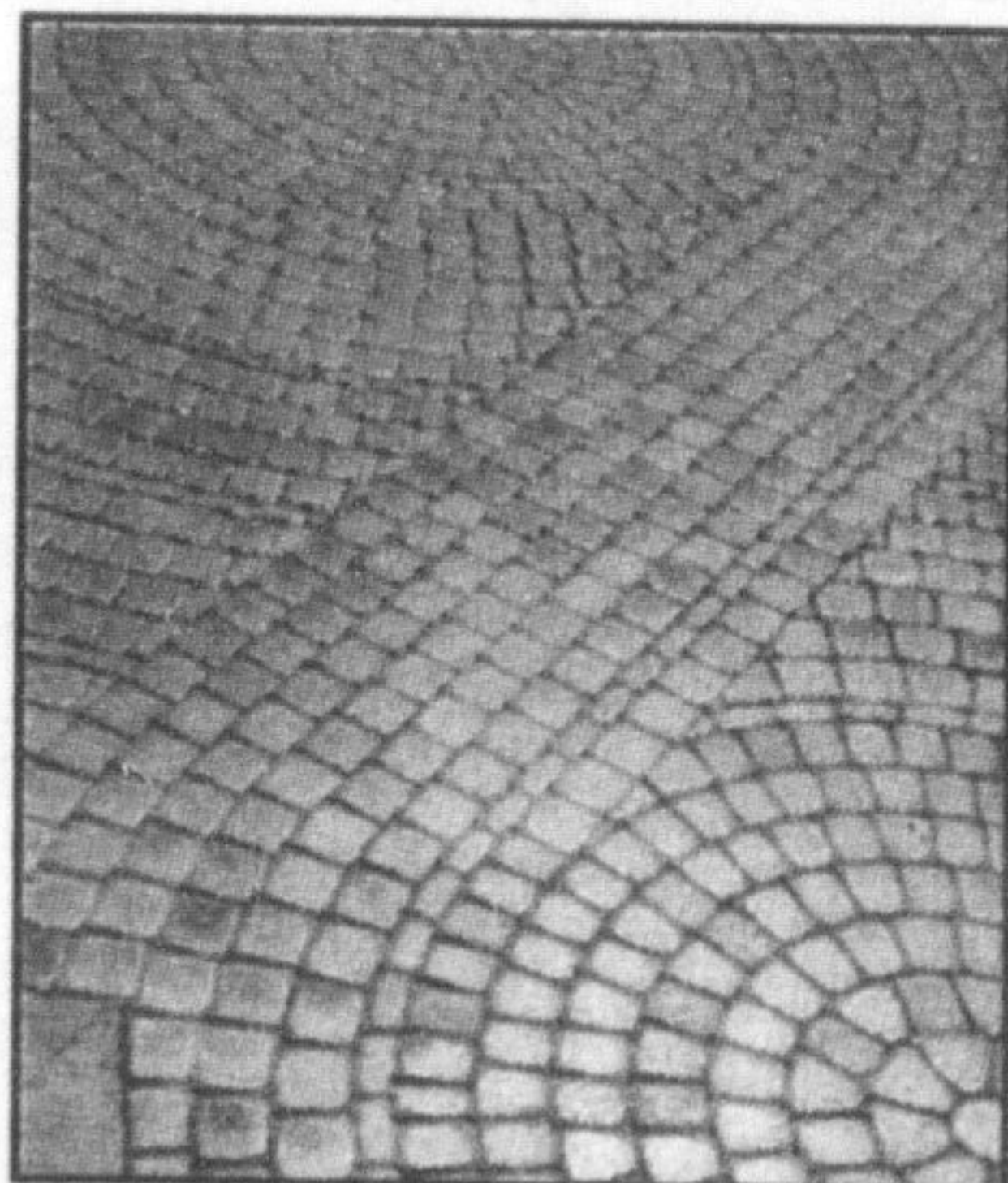
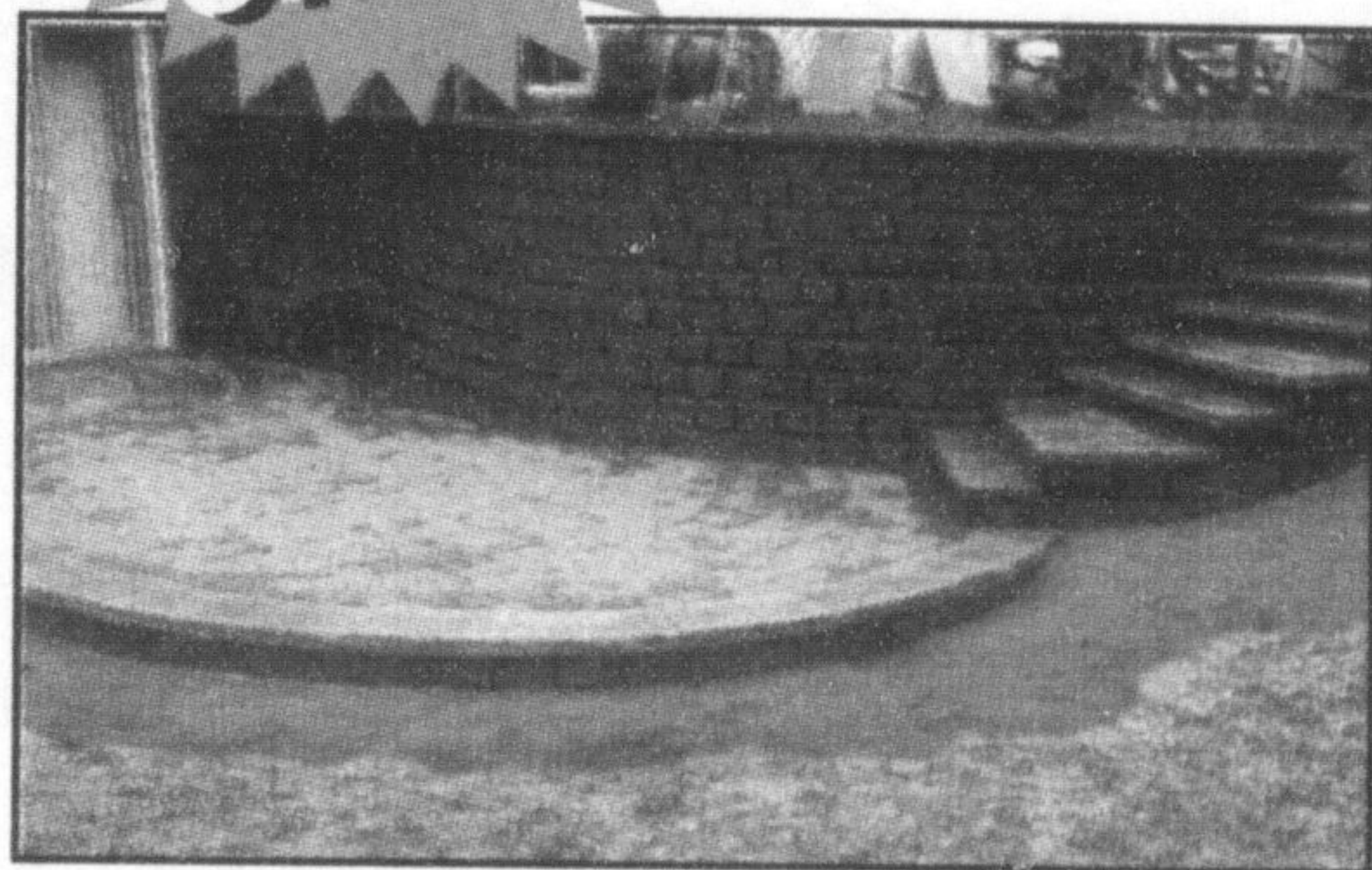


Home & GARDEN LAWN & GARDEN

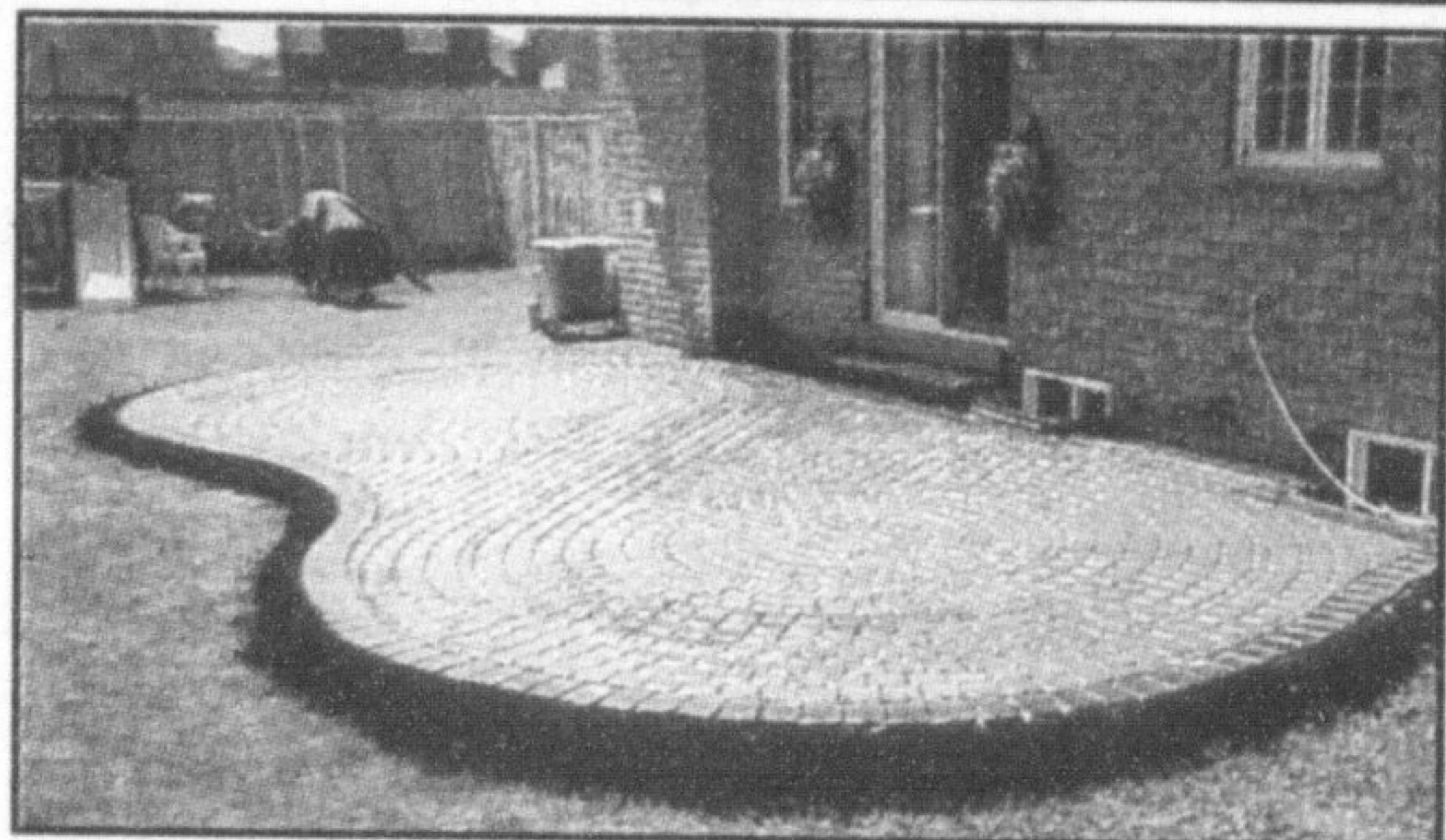
INTERLOCKING SPECIALS

1 WEEK ONLY!

DRIVEWAYS • PATIOS • WALKWAYS



- PATTERN CONCRETE
- DRIVEWAYS
- PATIOS
- WALKWAYS
- POOL DECKS
- RETAINING WALLS
- FOUNDATIONS
- PARKING LOTS
- EXPOSED AGGREGATE
- BROOM FINISH IN VARIOUS COLOURS



LICENSED & BONDED
OVER 15 YEARS OF EXPERIENCE

ALL PRICES ARE INCLUSIVE OF:
• All excavation, labour, & materials
• Many patterns & colours to choose from
• No hidden charges

Corner Stone Paving

FREE ESTIMATES

24-MONTH WRITTEN GUARANTEE

647-285-2369



FAQ - Electricity

Q: Is it possible for a low-tension, 120-volt wire to cause a fatal shock?

Yes! Statistics

confirm that a high percentage of past electrocutions involved 120-volt circuits. In fact, death can be

caused by one tenth of the current required to light a single 100-watt, 120-volt light bulb. And electricity at

120 volts is the standard in all houses, today.

Q: Can wood conduct electricity?

Yes! Contrary to a number of popular beliefs, natural wood is often a conductor. The sap flowing through tree branches enhances the conductivity of wood. Likewise, rain and snow penetrate the wood of decks and ladders, which, in turn become conductors. Metal is an excellent conductor of electricity and is often imbedded in wood ladders for structural purposes, again increasing their conductivity. Although wood can be a good insulator, it must be treated and maintained under certain specific conditions. That is why wood is no longer allowed to be used as insulation.

Q: Are multiple outlets always safe?

No! A surge on the circuit can cause overuse of a multiple outlet, and lead to a fire. We recommend the use of a surge-protected power bar to avoid all possibility of an overload.

Protection PLUS



PLUS

Extends the Life of Your Equipment

EXTEND the LIFE of your Equipment



- A Properly Maintained Engine Will**
- Reduce fuel consumption up to 30%
 - Protect your investment
 - Reduce emissions up to 50%

Bring in your equipment for a tune-up or purchase a Briggs & Stratton Maintenance Kit.



Now is the time to give your Outdoor Power Equipment a tune-up! Briggs & Stratton has all the maintenance products you need to extend the life of your engine. Just pick up the Briggs & Stratton Maintenance Kit you need from Halton Power Equipment or let us do it for you. You can be assured your Briggs & Stratton powered equipment will start up easy and run at maximum performance!

"Your Power Source"
HALTON POWER EQUIPMENT
Parts & Repairs For All Small Engines
20 Main St. W. Milton
905-875-3286



HOME, LAWN

BUSINESS DIRECTORY

& Garden

Decorative Painting

Professional Faux Painting

- Venetian • Textured Plaster
- Color Wash • Linen Look
- Shadow Stripe • Block Effect
- Custom Wall Painting
- Wall Papering

905-854-3846
905-466-1305



RENOVATIONS

R.M. Contracting
905-878-8625

GIVE YOUR HOME OR OFFICE
A FACE LIFT
WE CAN HELP

- Bathrooms
- Decks
- Additions
- Mezzanines
- Rec-Rooms
- Garages

• HIRE A LICENCED CONTRACTOR

Septic Pumping

Robert Noble Ltd.

SEPTIC TANK PUMPING

150 Ft. of Hose For Crossing Lawns
High Pressure Drain Flushing & Repairs
Same Day Emergency Service
2 Trucks to Serve You - Radio Dispatch

(519) 853-0500 Acton
Answering Service
905-878-6869
P.O. BOX 773, ROCKWOOD

Handyman Services

On time. Done right:
"We're Canada's choice for all your household jobs, large or small."

Mr. Handyman

From fixing a broken window to caulking a bathtub, we are your one-stop shop.

www.mrhandyman.com
MILTON
905-875-0555

"No Project is too small for Mr. Handyman"

Painting

Leonard Eckert Painting
Interior & Exterior

For free estimate & quality work
Call: (905) 864-9494

Irrigation/Landscaping

Mansewood Irrigation and Landscape Lighting Inc.
Certified Irrigation Technicians



- Specialists in design, installation and maintenance of all in-ground irrigation systems.
- Design, installation and maintenance of landscape lighting systems.
- Based in Milton, serving all of Halton

Call 905-693-2922 for a free estimate

Landscaping

LOOKING GOOD LANDSCAPING

David J. Cook
Tel: 905 330-1330
Fax: 905-332-1330

- Interlock
- Patios & Walls & Driveways
- Retaining Walls & Steps
- Ponds & Waterfalls
- Landscape Design
- Armour Stone
- Bobcat Services
- Lawn Maintenance
- Tree Trimming
- and More



Serving Milton & surrounding area

Home, Lawn & Garden Directory



To book this spot, call Joice at 905-878-2341 Ext. 241