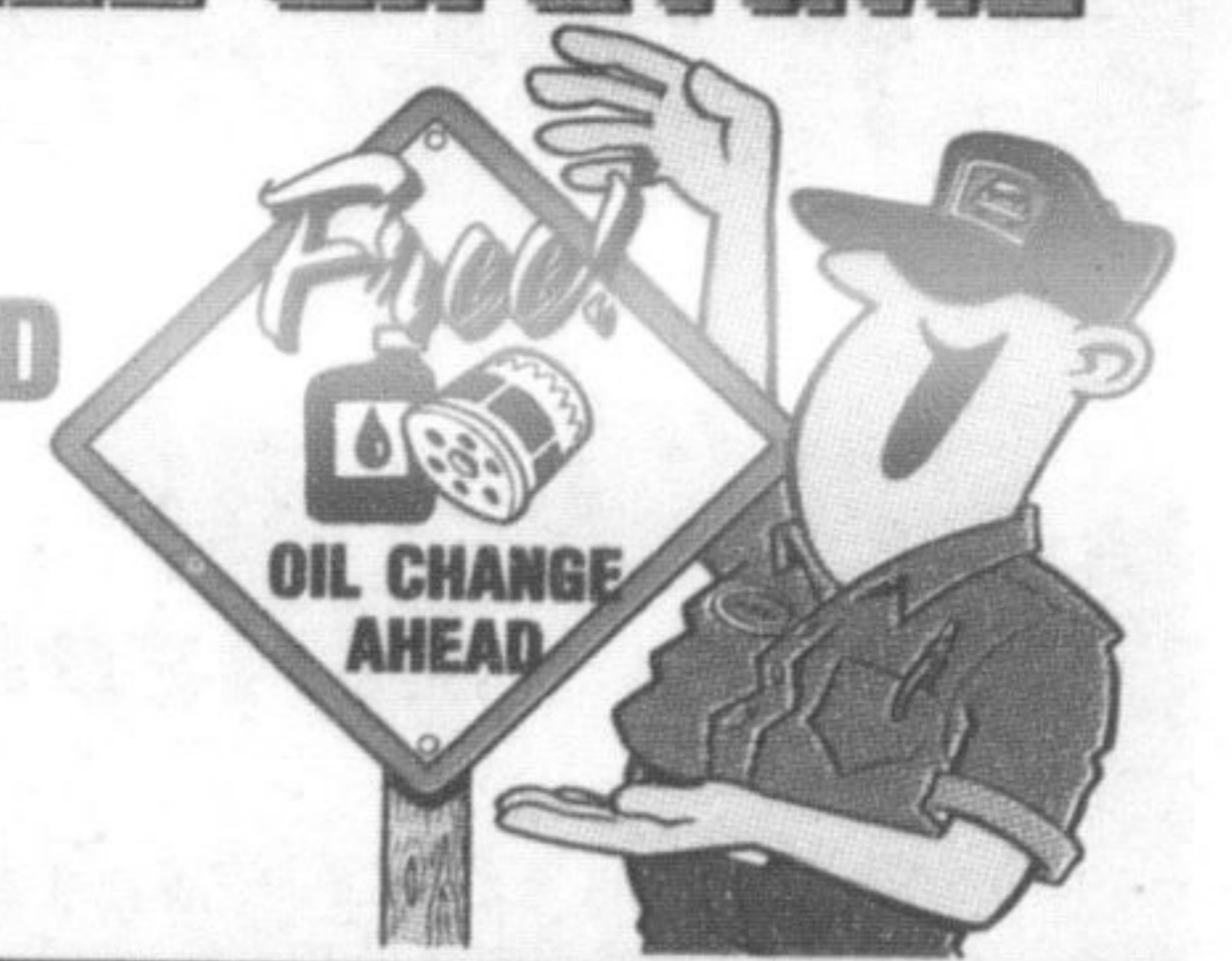


Visit us on the web at [www.miltonchrysler.com](http://www.miltonchrysler.com)

Milton Chrysler is once again, proud to be recognized as...  
**#1 CHRYSLER DEALER IN ONTARIO\***  
 for Customer Sales Satisfaction. We rate the best in selection, service & price. Year after year, day after day, we sell satisfaction.

**BONUS: GET FREE LIFETIME OIL CHANGES#**

WITH EVERY NEW & USED VEHICLE PURCHASE/LEASE EXCLUSIVELY AT MILTON CHRYSLER



**VIPER POWER!**

500hp Ram SRT-10

NOW IN OUR SHOWROOM!

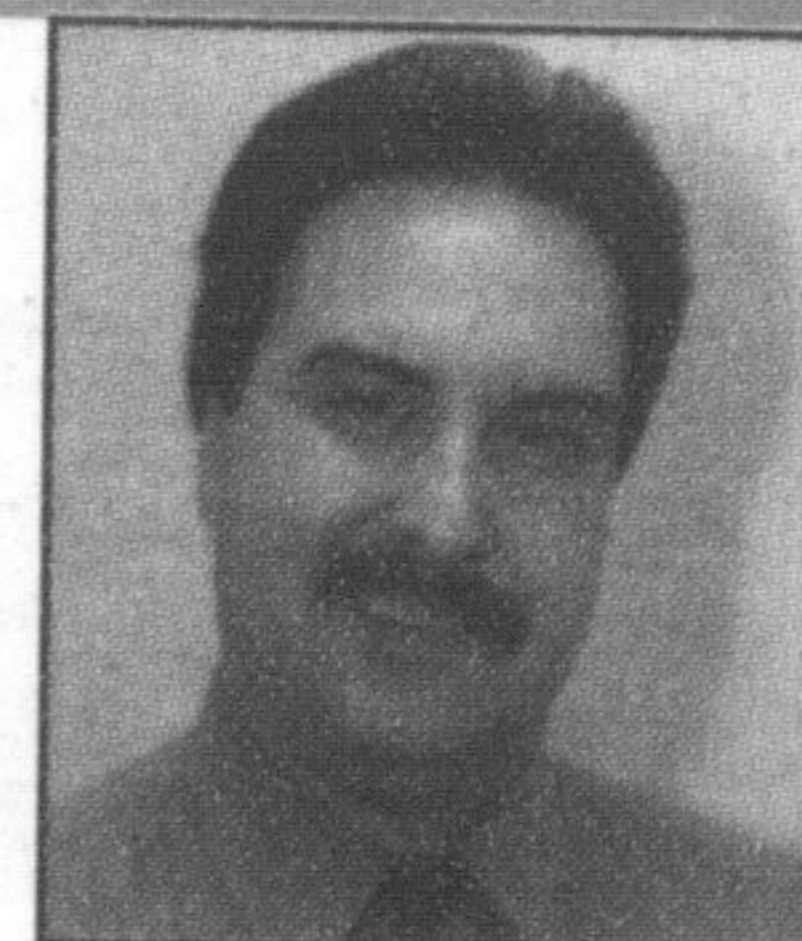
"THE WORLD'S FASTEST PRODUCTION TRUCK"



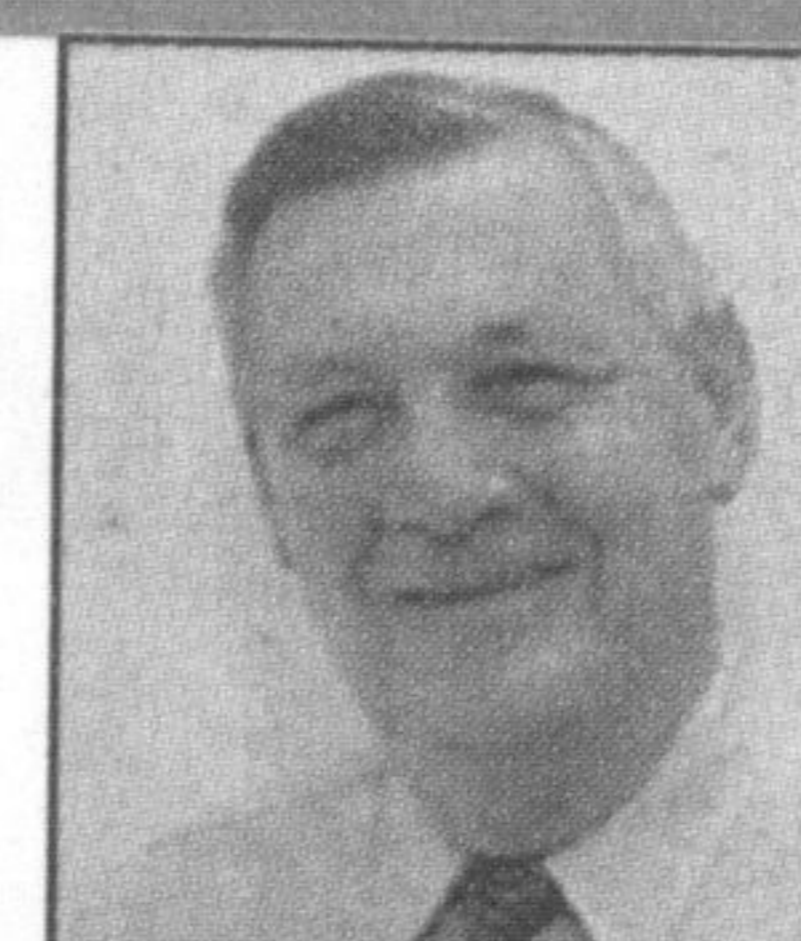
MILTON CHRYSLER, YOUR 1ST CHOICE CHRYSLER DEALER FOR OVER 38 YEARS!



Phil Ciantar



Joe De Oliveira



Dwain McGillivray



Ray Dunbar



Alex Medina



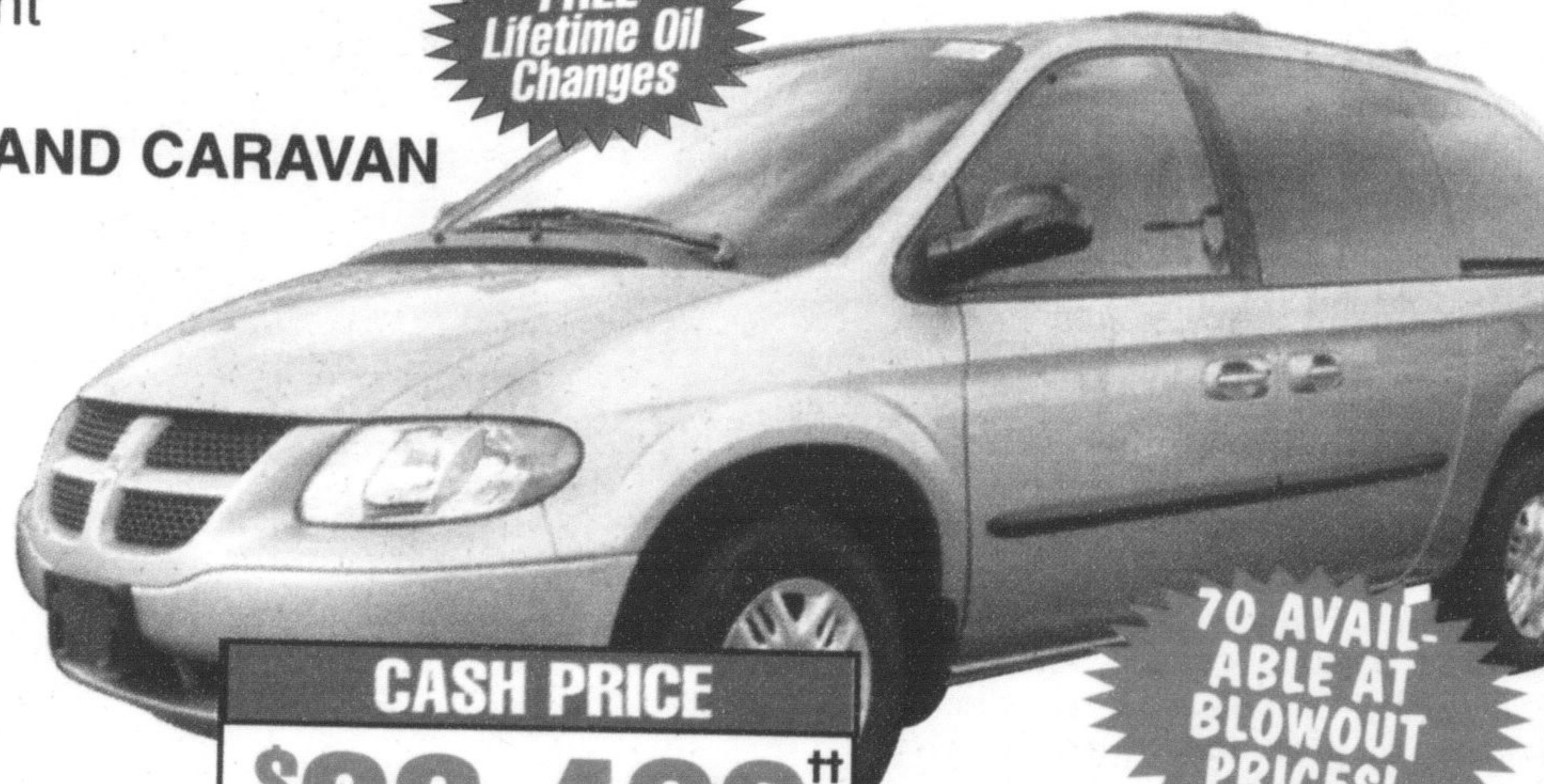
Sean Gibson

**GRAND OF A SALE**

Drive a fuel efficient brand new 2004 DODGE GRAND CARAVAN equipped with:

- 28C pkg
- 3.3L V6
- Auto O/D trans
- Anti-Lock Brakes
- Air conditioning
- Quad seats
- 7 passenger
- AM/FM/CD stereo
- Sunscreen glass
- Tilt • Cruise • Floor mats • 2 side sliding doors
- Power windows • Doorlocks • Mirrors • Roof rack

FREE Lifetime Oil Changes



CASH PRICE **\$23,499**††

NO DOWN PAYMENT **\$299** 48 month †† Gold Key Lease

70 AVAILABLE AT BLOWOUT PRICES!

**PREMIUM QUALITY CHRYSLER CERTIFIED**

**2005 CHRYSLER 300C "HEMI"**

TEST DRIVE ONE TODAY!



FREE Lifetime Oil Changes

PT CONVERTIBLES IN STOCK FROM **\$26,995**††

FREE Lifetime Oil Changes



**2004 Chrysler Intrepid**

Auto, air, tilt, speed control, p.driver seat, alloy wheels, CD, 2.7L V6, keyless entry. Stk # 621125

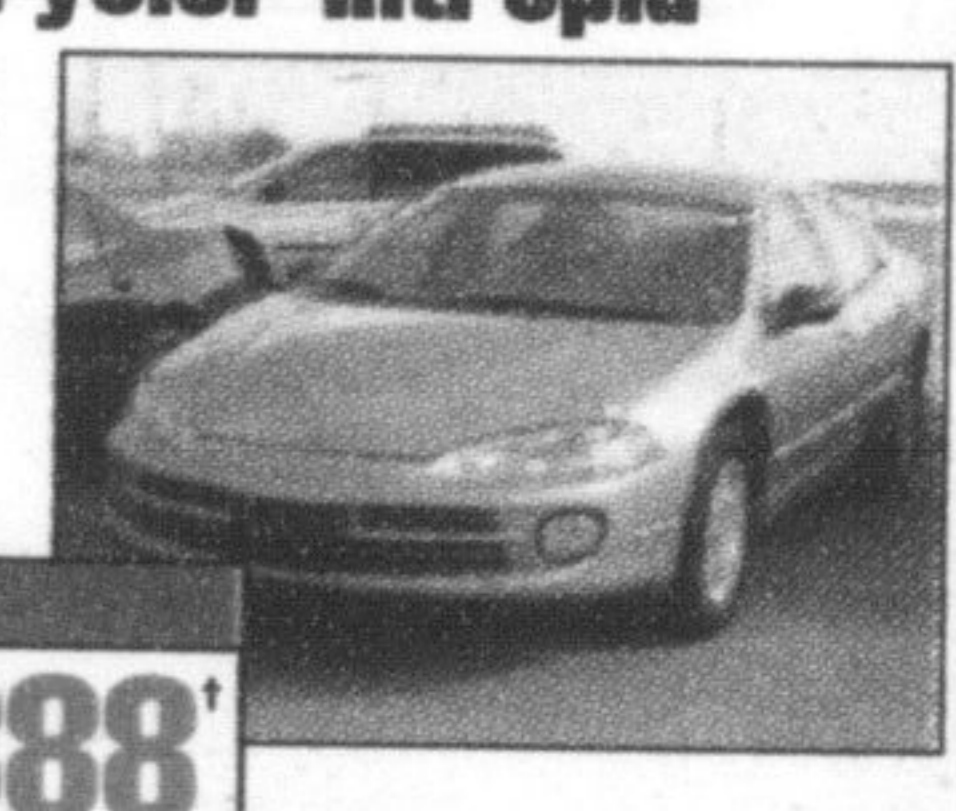
CASH PRICE **\$18,995**



**2004 Chrysler Intrepid**

V6, auto, air, pl, pm, tilt, cruise, cd Stk # 603780

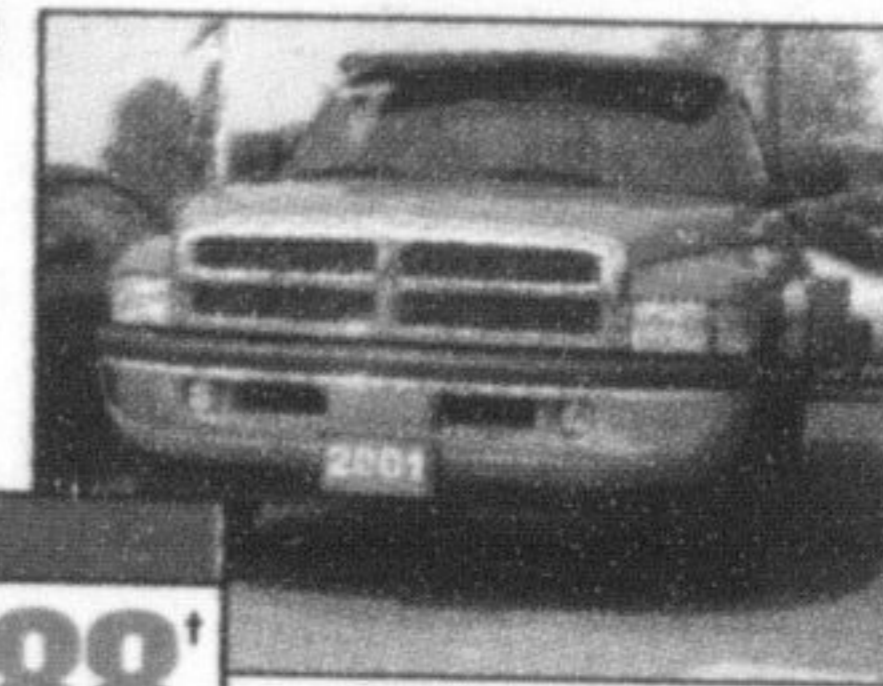
CASH PRICE **\$17,888**



**2001 Dodge Ram 1500 SLT Quad Cab**

V8, air, tilt, speed control, pw, pl, pm, tonneau cover & trailer tow pkg. Stk # 226165

CASH PRICE **\$20,488**



**2002 Dodge Caravan**

3.3L V6, auto, air, spd control, pw, pl, pm, CD & more. Stk # 633961

CASH PRICE **\$17,995**



**'00 Chrysler Town & Country**

Auto, tilt, cruise, pw, pl, CD/cass, 75,862 kms, leather. Stk # 593815

CASH PRICE **\$17,888**



**2000 Dodge Grand Caravan**

V6, auto, air, tilt, speed control, pw, pl, pm, cass. Low, low kms. Stk # 753829

CASH PRICE **\$13,995**



**2003 Chrysler PT-Cruiser**

Auto, air, tilt, cruise, pw, pl, pm, cd, Alum. wheels Stk # 614035

CASH PRICE **\$17,888**



**'01 Dodge Caravan SE**

Auto, air, tilt, cruise, pw, pl, cass, 3.3L Stk # 138576

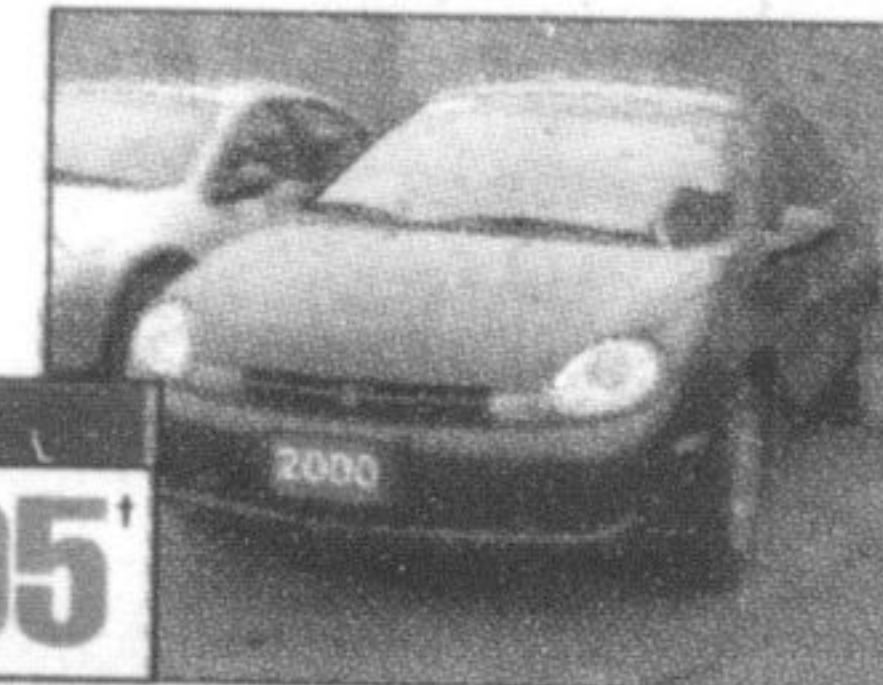
CASH PRICE **\$16,995**



**'00 Chrysler Neon**

Auto, air, tilt, cass, 45,499 kms Stk # 979377

CASH PRICE **\$8,995**



**2000 Dodge Grand Caravan**

V6, auto, air, 4dr, tilt, cruise, p.w.l.m. Stk # 753829

CASH PRICE **\$13,888**



**'04 Chrysler Sebring Convertible**

A/C, tilt, cruise, pw, pl, pm, cloth, low kms Stk # 136565

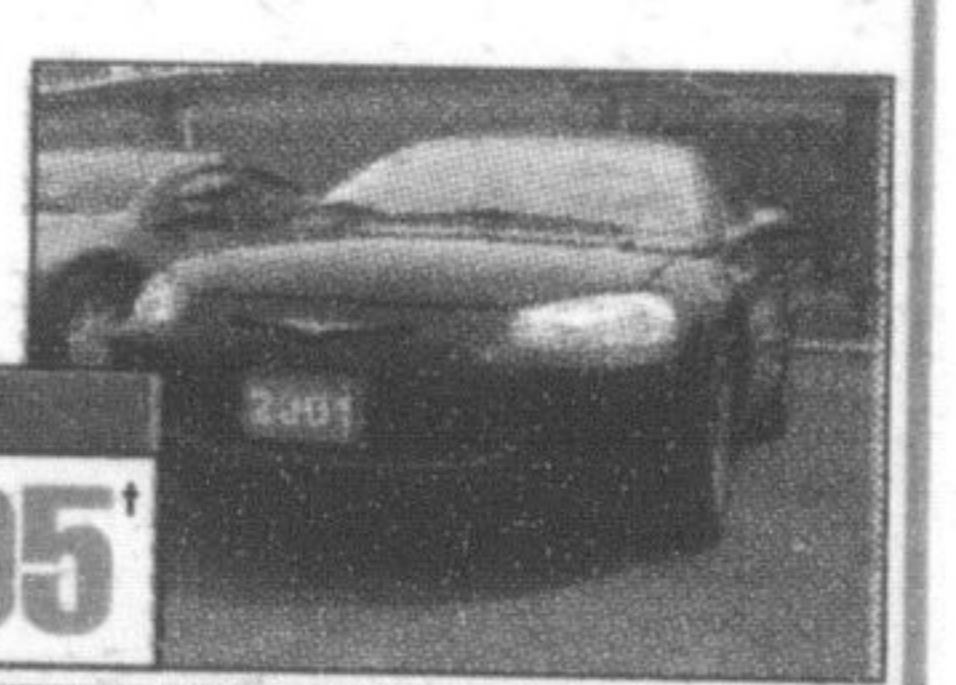
CASH PRICE **\$27,888**



**'01 Chrysler Sebring LX**

V6, auto, air, tilt, cruise, pw, pl, pm, cass, balance of factory warranty Stk # 505064

CASH PRICE **\$14,995**



**LEASE DEALS**

LEASE RATES AS LOW AS **0%** UP TO 48 MONTHS ON SELECTED MODELS

**CASH DEALS**

FACTORY TO DEALER ALLOWANCES AS HIGH AS **\$6000** ON SELECTED MODELS

**FINANCE DEALS**

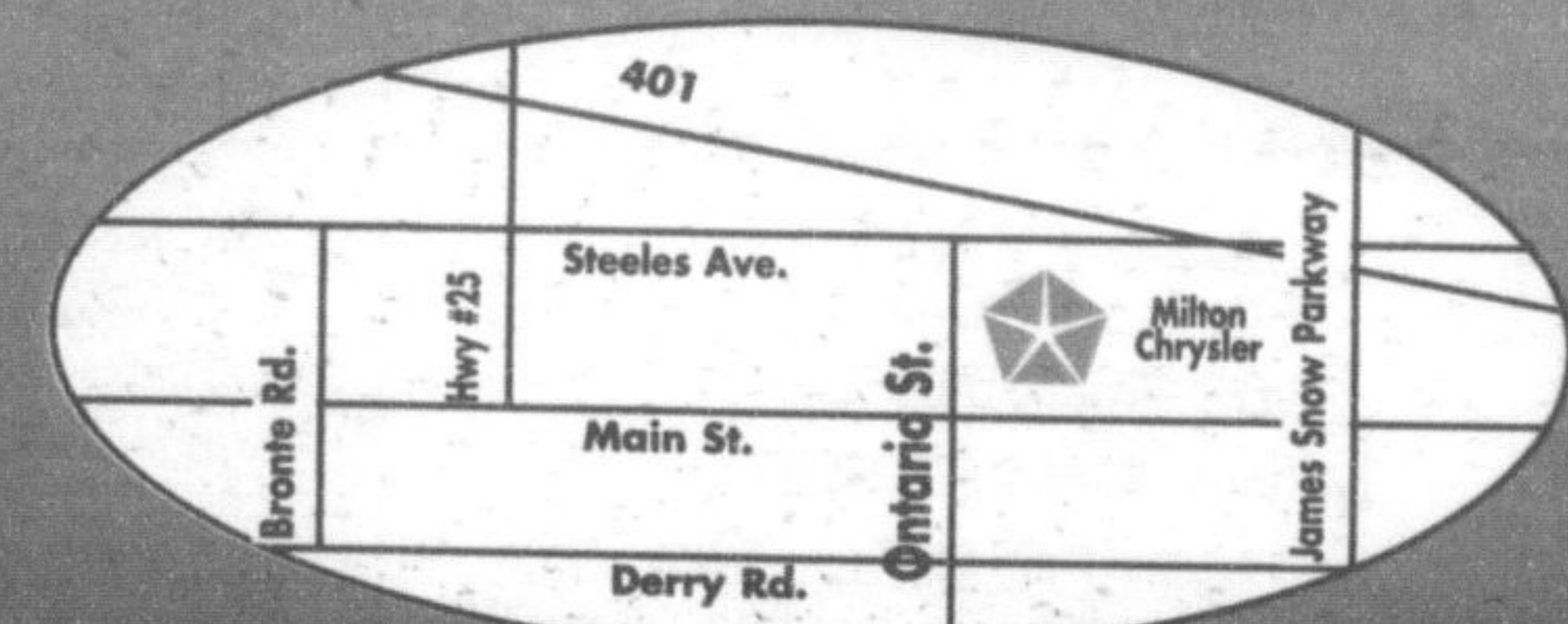
FINANCE RATES AS LOW AS **0%** UP TO 60 MONTHS ON SELECTED MODELS



**905-878-8877**

**81 ONTARIO ST. N. MILTON**  
 one block north of the Milton Mall

Visit us at [www.miltonchrysler.com](http://www.miltonchrysler.com)



\*Sale price on used vehicles add for admin. fee, applicable taxes & lic. fee. \*\* Rating based on Chrysler End of Year 2003 SSI rating for our dealer group. #Excludes diesels & SRT models. See dealer for details. ††Cash sale price incl. FDA, add for admin fee, applicable taxes & lic fee + freight. Lease based on 0%, 48 mth term. Due at lease signing, admin fee, applicable freight, lic. + taxes. 81,000 km allowance for team. Excess km charge \$0.15 + applicable taxes. Walk away lease, optional buy back. OAC. See dealer for details. ##Finance, lease rates + FDA are mutually exclusive and may not be combined. Visit dealer for details for your particular model.