

# Dateline

## Friday May 14

The Milton Players Theatre Group presents **The Affections of May** at the Milton Seniors' Activity Centre, 500 Childs Dr. Doors open at 7:30 p.m., and the show begins at 8 p.m. Tickets, which cost \$15, are available at Delacourt's, at the corner of Main and Martin streets, or you can call (905) 875-0629.

## Saturday May 15

Kilbride area Preschool holds its **May Day fundraising event** from 10 a.m. to 2 p.m. at the school, located at the corner of Kilbride and Pantton streets. The event includes a barbecue lunch, a silent auction, craft table, henna art, face painting, a flower sale, rock climbing and children's music by Turkey Rhubarb.

The Milton and District Horticultural Society holds its annual **Spring Flower Show** at Milton Mall. All residents of Milton are invited to enter the show. Entries must be submitted between 9 and 11 a.m. and picked up after 3:30 p.m. For more information, call (905) 854-1364.

The Milton Community Resource Centre, 917 Nipissing Rd., holds a **garage sale** starting at 8 a.m. Donations are accepted, or tables can be rented to sell your own items. For more information, call (905) 876-1244, ext. 13.

Sister Pledge holds a **fundraiser**

to support the Weekend to End Breast Cancer. The fundraiser takes place from 8 p.m. to 1 a.m. at the Lions Hall at Milton Memorial Arena. Tickets cost \$20, which includes door prizes, a late night buffet and entertainment. They're available at The Ivy Arms pub on Main Street or by calling (905) 699-8660 or (905) 876-7255.

**Hornby Euchre** is held at 7:30 p.m. at the Hornby community hall on Steeles Avenue.

The Acton Seniors' Recreation Centre holds its **Spring Fling Sale** at the Acton Arena from 11 a.m. to 2 p.m. with lunch, a bake sale, a craft table, a garden table, raffles and more.

The Fine Arts Society of Milton presents a **show and sale of multimedia artwork** at the Milton Mall concourse. For more information, call (905) 878-7397.

**Fair Vote Canada, Halton chapter**, meets from 10 a.m. to noon at the SAVIS office, room 227 on the second floor of Hopedale Mall, Third Line at Rebecca Street in Oakville. Everyone's welcome. For more information, call Gail Turner at (905) 637-2279 or e-mail her at gbunty@cogeco.ca.

St. John's Anglican Church, 10009 Guelph Line at No. 10 Sideroad, holds its annual **Plant Sale** at 9 a.m. featuring perennials and annuals, mulch and soil, gar-

den crafts, a nearly-new table, a bake table and lunch.

## Sunday May 16

The Halton-Peel branch of the Toronto chapter of the **Canadian Celiac Association** meets from 2:30 to 4:30 p.m. at Munn's United Church, 5 Dundas St. E. (at Sixth Line), in Oakville with presentations on osteoporosis and making gluten-free bread with a breadmaker. For more information, call Julia at (905) 453-8155 or Vanessa at (905) 338-5636 or visit [www.celiac.ca/etoronto.html](http://www.celiac.ca/etoronto.html).

## Monday May 17

Halton Regional Police Service presents **PACT (Parents of Adolescents Coming Together)** from 7 to 8:30 p.m. in the community room of the station, 490 Childs Dr.

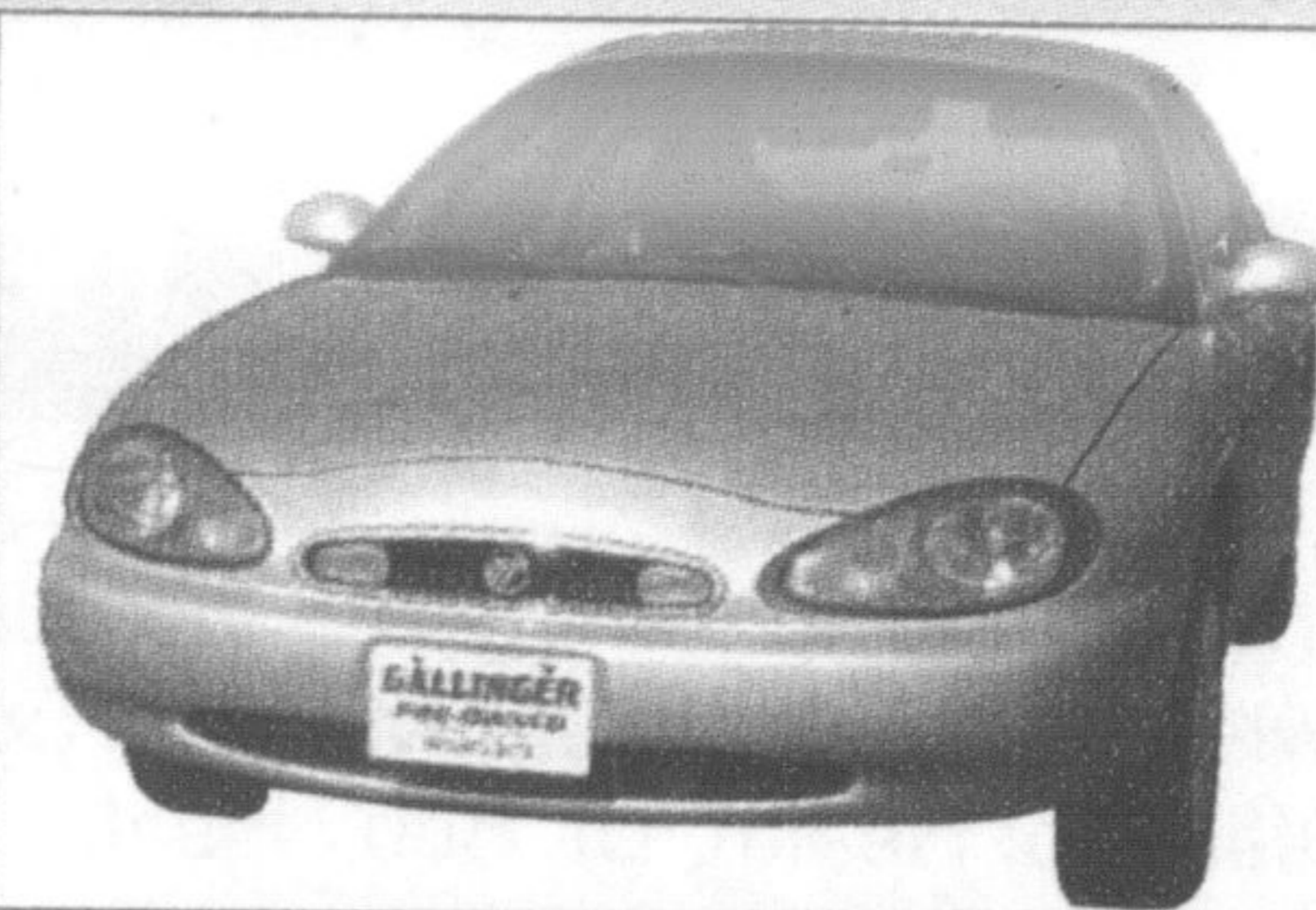
## Tuesday May 18

The **Milton Community Consultation Committee** meets at the Milton Seniors' Activity Centre, 500 Childs Dr., at 7:30 p.m. to discuss issues and events that affect citizens and police. If you have concerns you'd like tabled, call Greg Nelson at (905) 875-3663 or Staff Sgt. Glen Randall at (905) 878-5511, ext. 2403.

Improve communication and leadership skills with the **Milton** • see more **DATeline** page B3

## GALLINGER Ford PRE-OWNED

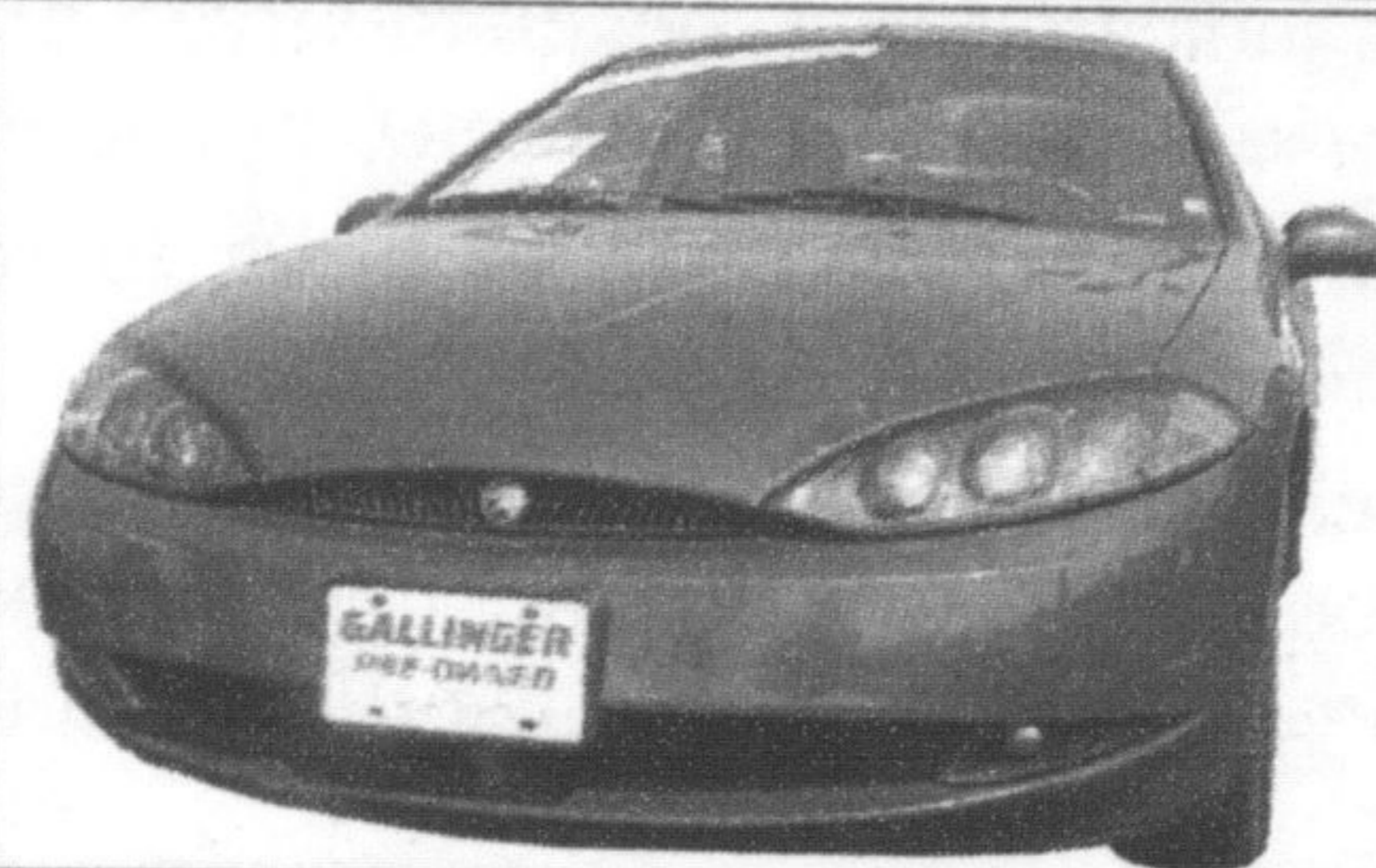
We make it *As Fordable*



### 1999 Sable LS 4dr

6 Cyl. Auto, A/C, P/W, P/L, cruise & tilt, 104,000 km, silver ext. Stk #55008A.

**\$0 Down** | **\$2000 Down**  
**\$236** /mth | **\$196** /mth



### 2000 Mercury Cougar

V6, auto, A/C, P/W, P/L, cruise & tilt, power seat, electronic dash, Alum. wheels, 71,250 km, red ext. Stk #2209A.

**\$0 Down** | **\$2000 Down**  
**\$326** /mth | **\$286** /mth

**PST & GST INCLUDED**

**ONLY EXTRA CHARGE IS LICENCE FEE & EXTRA WARRANTY IF NEEDED**

**Problems with Credit? Bad Credit • Discharged Bankrupt**  
• No Credit Need a vehicle? We can help! We help good people with credit problems. Get financed with the best possible rates!!! Call **Jef Green**

PST & GST included, license fee & additional warranty extra (if needed). Payments are 60 months @ 7.45% OAC. Limited time offer, call dealer for details.

**GALLINGER**  
FORD LINCOLN

655 MAIN STREET EAST, MILTON

Visit us at [www.gallingerford.com](http://www.gallingerford.com)

A Tradition of Value & Trust since 1967

SALES • LEASING • SERVICE • PARTS • COLLISION CENTRE



(905) 875-FORD  
3 6 7 3

Country Depot Ready... Set... **Grow!**

LOCAL  
10" GERANIUM  
HANGING BASKETS  
**\$10<sup>99</sup>**

GRASS SEED  
from  
**\$8<sup>97</sup>**  
2 kg

ALL  
MULCHES **\$1<sup>00</sup>**  
Save /bag

4 pack  
ANNUALS  
**\$1.29**

TOPSOIL 5 for **\$10**

TRIPLEMIX 4 for **\$12**

MANURE 5 for **\$12**

Epic  
PERENNIALS  
from  
**\$2.99**

KILLEX  
1 L **\$24<sup>97</sup>**

ROUNDUP  
1 L **\$14<sup>97</sup>**

ROSES &  
ROSE BUSHES  
from  
**\$14.99**

"INSTORE" SPECIALS

IAMS CHUNKS  
**\$39.99**

WINDSOR WATER  
SOFTENER SALT

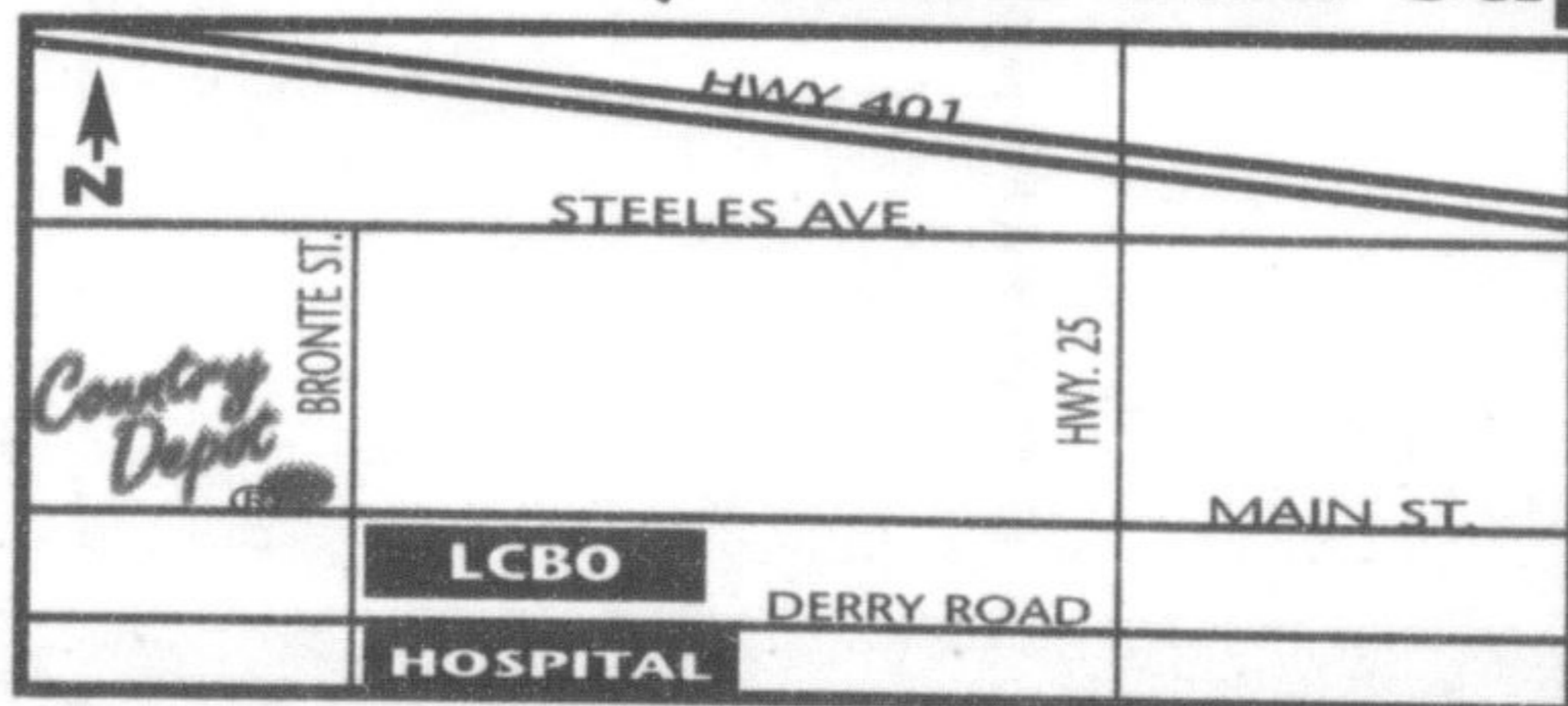
SAVE 50¢  
per 40 kg bag

ALL BIRD SUPPLIES  
SAVE 10%

Check out our selection of Window Boxes, Planters, and Fibre Pots

Also available: Mulches, Decorative Stone, and Pond Supplies

**MILTON**  
**Country Depot**  
28 Bronte St. N.  
905-878-2391



Country Depot

Monday - Friday 8-6pm • Sat. 8-5pm • Sun. 11-4pm

- Pet Food & Supplies
- Clothing, Footwear
- Bird Seed
- Lawn & Garden
- Giftware
- Farm Supplies
- Propane
- Equine Supplies

