

GET \$1000^{*}
WORTH OF
EXTRAS WITH
THE NEW
SIERRA
NEVADA
EDITION.



Sierra SLE 4x4 model shown



The Sierra SLE Nevada Edition 4WD gets you...

- Up-Level 40/20/40 Seat • Heavy-Duty Suspension
- Deep-Tinted Glass • Chromed Stainless Steel Tubular Side Steps • Fog Lights • Upgraded Tires
- Aluminum Wheels

Plus...

- 295-HP Vortec 5300 V8 Engine • Z71 Off-Road Suspension Package
- 4-Wheel Disc Brakes with ABS • Locking Differential
- Dual Zone Air Conditioning • Passlock II™ Security System

SMARTLEASE
\$268*
 per month

OR

CASH PURCHASE PRICE
\$36,998^{*}
 OR
0%[‡] PURCHASE FINANCING

Down Payment	Lease Payment
\$0	\$396
\$2,000	\$340
\$3,200	\$306

IN-LINE 5 HAS MORE HORSEPOWER THAN ANY V6 IN ITS CLASS

Canyon Crew Cab 4WD model shown



GMC CANYON

- CANYON CREW CAB 2WD
 1SC L52 M30 B84
- 3.5L 220-HP Engine
 - Automatic Transmission with Overdrive • 4 Wheel ABS
 - 60/40 Split-Folding Rear Seats
 - Air Conditioning • CD Stereo

SMARTLEASE
\$268*
 per month

WARD'S 10 BEST ENGINES 2002-2004

Envoy SLT model shown



GMC ENVOY

- ENVOY SLE R7E
- 275-HP Vortec 4200 I6 Engine
 - 4-Speed Automatic
 - Autotrac Automatic AWD
 - Dual-Zone Air Conditioning
 - Power Locks/Windows/Heated Mirrors
 - Remote Keyless Entry

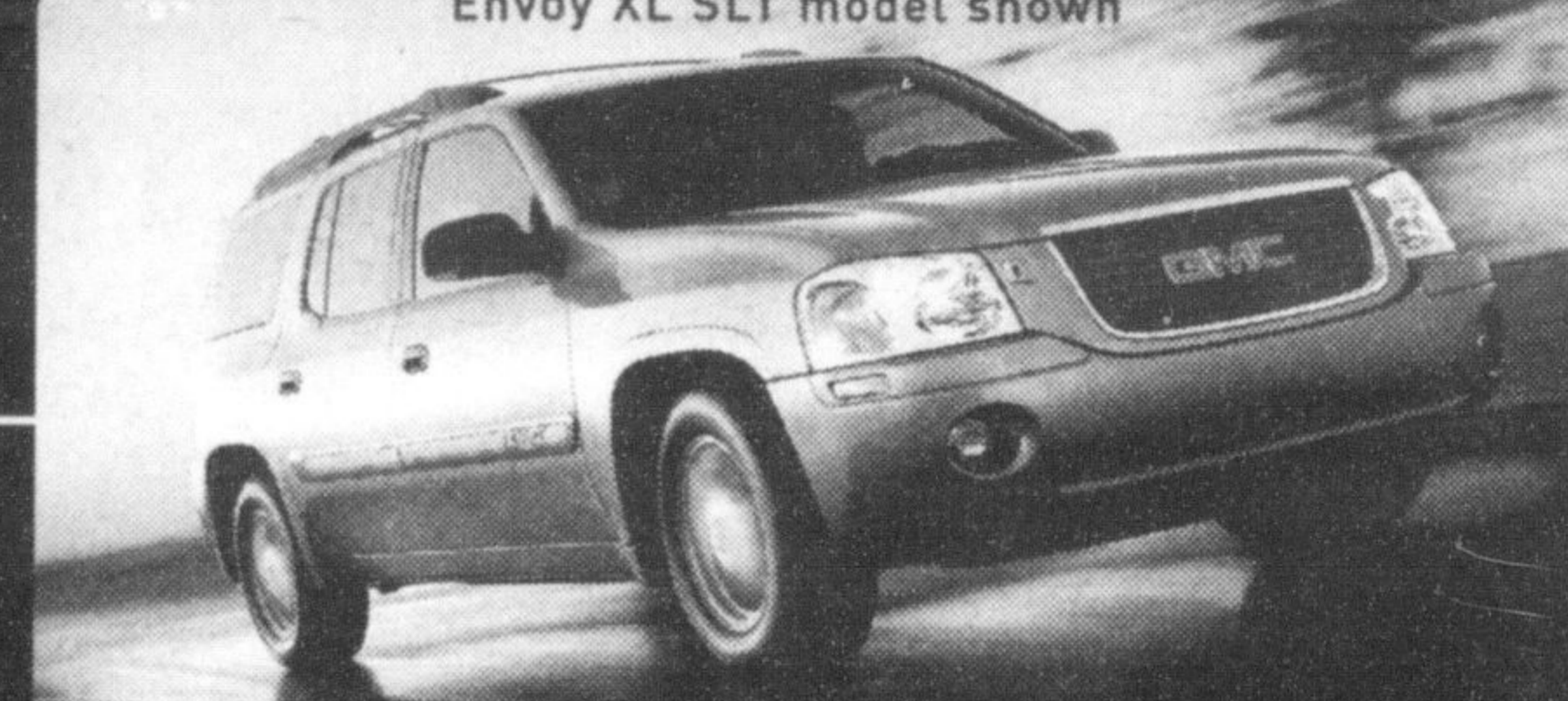
SMARTLEASE
\$368*
 per month

OR

0%[‡] PURCHASE FINANCING

ENVOY HOLDS A FIVE STAR SAFETY RATING FOR FRONT AND REAR OCCUPANTS IN THE SIDE IMPACT TEST

Envoy XL SLT model shown



GMC ENVOY XL

- ENVOY SLE XL R7B
- ALL THE FEATURES OF AN ENVOY SLE PLUS THESE EXTRA FEATURES:
- 7-Passenger Seating With Flat-Folding Split Rear Seat
 - 16" Longer Wheelbase than 5-passenger Envoy Models
 - Rear Heater and Air Conditioning
 - Power Rear Vent Windows
 - Rear Cargo Shelf Storage System

SMARTLEASE
\$401*
 per month

OR

0%[‡] PURCHASE FINANCING

For the latest information, visit us at gmcanada.com, drop by your local Pontiac • Buick • GMC Dealer or call us at 1-800-GM-DRIVE. *Based on a 36/48/48 month lease. A down payment or trade of \$4,560/\$4,505/\$4,800/\$4,800 (Sierra Nevada SLE Ext Cab 4WD TK15753 1SD LM7 NP8 QJP R6M UK3 Z71 ZB2/Canyon 2WD Crew Cab TS15643 1SC L52 M30 B84/Envoy SLE R7E/Envoy SLE XL R7B) is required. Annual cost of borrowing of 0.5%/2.9%/0.9%/0.9% per annum. Option to purchase at lease end is \$25,220/\$13,658/\$20,053/\$21,127 plus applicable taxes. Annual kilometre limit of 20,000 km, \$0.12 per excess kilometre. Other lease options available. **Freight (\$1,050/\$900/\$950/\$950), licence, insurance, registration, PPSA, administration fees and taxes not included. †The SMARTLEASE monthly payment and the GMAC purchase finance rate are not available with and are not calculated on the "Cash Purchase Price" shown. The difference between the price for the SMARTLEASE/GMAC Purchase Financing offer and the "Cash Purchase" offer is deemed under provincial disclosure laws to be a cost of borrowing, whether or not the same represents actual interest, and is required to be expressed as an annual percentage which is 3.24%. (Sierra Nevada SLE Ext Cab 4WD TK15753 1SD LM7 NP8 QJP R6M UK3 Z71 ZB2) ‡Financing on approved GMAC credit only. Down payment, trade and/or security deposit may be required. Monthly payment and cost of borrowing will vary depending on amount borrowed and down payment/trade. Example: \$10,000 at 0% APR, the monthly payment is \$208.33 for 48 months. Discounts or other incentives may be available where consumers opt for a cash purchase price offer. By selecting the purchase financing offer, consumers may be foregoing such discounts and incentives which may result in a higher effective interest rate. ▲\$1,000 credit is exclusive of applicable taxes and is reflected in this advertisement. ▼†▲Offers apply to 2004 new or demonstrator models of vehicles equipped as described. Offers apply to qualified retail customers in the Ontario Pontiac • Buick • GMC Dealer Marketing Association area only (including Outaouais and excluding Northwestern Ontario). Dealer trade may be required. Limited quantities of Sierra Nevada available. Dealers are free to set individual prices. Limited time offer which may not be combined with other offers. Certain exceptions apply. See your dealer for conditions and details. ΔTesting conducted by the US National Highway Traffic Safety Administration (NHTSA). ©Registered trademark of General Motors Corporation. TD Canada Trust licensed user of mark. Visa International Service Association/TD Canada Trust and GM licensed user of marks. ®Trade-mark of The Toronto-Dominion Bank.

