

Come Meet Our Professional, Dedicated Sales Team

With Over 100 years Combined Automotive Experience!



Gary Hunt
PRESIDENT



Myke Ward
SALES MANAGER



John Pinney
BUSINESS MANAGER



Todd Landry
SALES ASSOCIATE



Sandy Paden
SALES ASSOCIATE



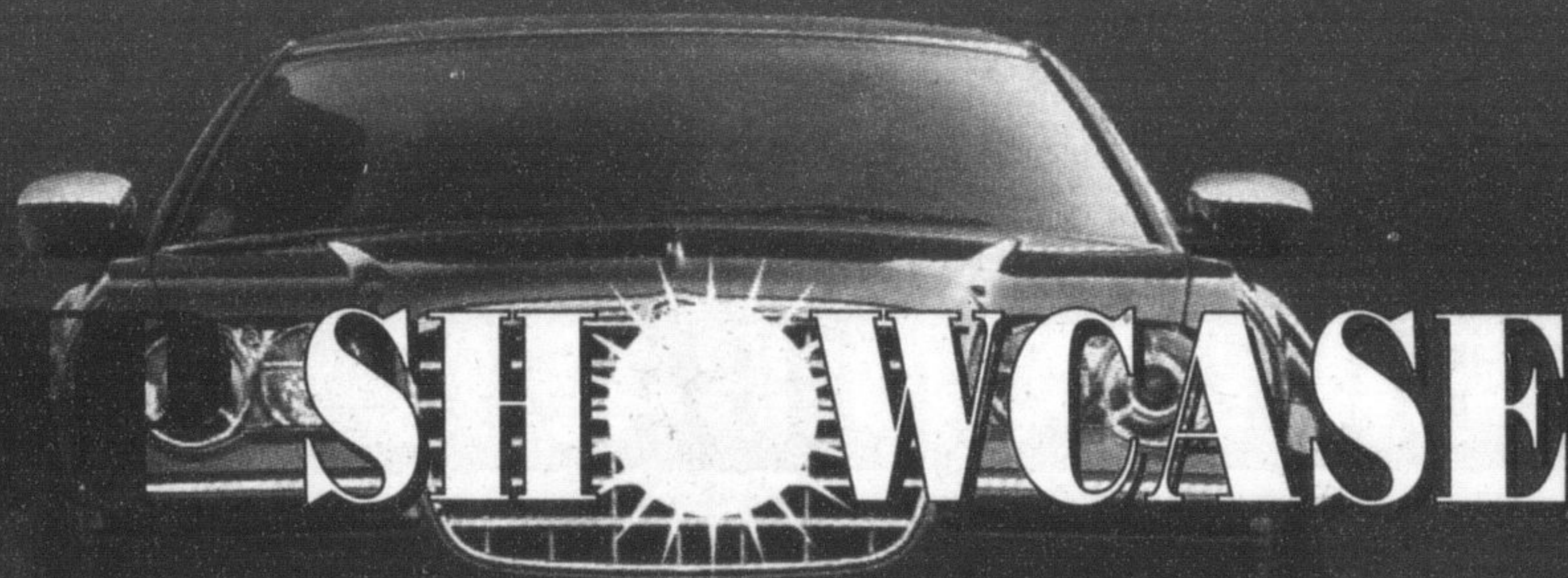
Allan Giles
SALES ASSOCIATE



Charles McCarroll
SALES ASSOCIATE



Feel the passion.



Join us on
WEDNESDAY, APRIL 28, 2004 AT 6 P.M.
for an exclusive Showcase Event



Experience the finest collection of Chrysler, Jeep, Dodge vehicles including the breathtaking new HEMI-Powered 2005 Chrysler 300C, the Radical PT Cruiser Convertible and the Exotic Chrysler Crossfire.

Visit Hunt Chrysler Jeep to be a part of the excitement and feel the passion of world-class engineering for yourself.

As our Special Guest, you will have a chance to win

A FREE ONE YEAR LEASE ON A 2005 CHRYSLER 300 SEDAN

See You There!

0% PURCHASE FINANCING* (OAC)
Up to 60 months Plus, extra Rebates Available on Selected Models

0% LEASE RATES ON SELECTED MODELS

A Breath of Fresh Air.
From your local Chrysler Dealer



LEASE FOR
\$399 /MTH FOR 48 MTHS

THE ALL-NEW 2005
CHRYSLER PT CRUISER
GT CONVERTIBLE*

2004 SEBRING
CONVERTIBLE LXI



LEASE FOR
\$415 /MTH FOR 48 MTHS
Stk# VN08

NO CHARGE
3Year 60,000 km
Maintenance Package!



2005 CHRYSLER 300C

2005 Chrysler 300:
• Luxurious two-tone interior
• 250 HP 3.5L V6
• Rear-wheel drive with Electronic Stability Program (ESP)
• Made in Canada

2005 Chrysler 300C (shown):
• 340 HP 5.7L HEMI V8 with Multi-Displacement System
• 5 speed Auto/Stick™ transmission

Nicely equipped starting at
\$29,995

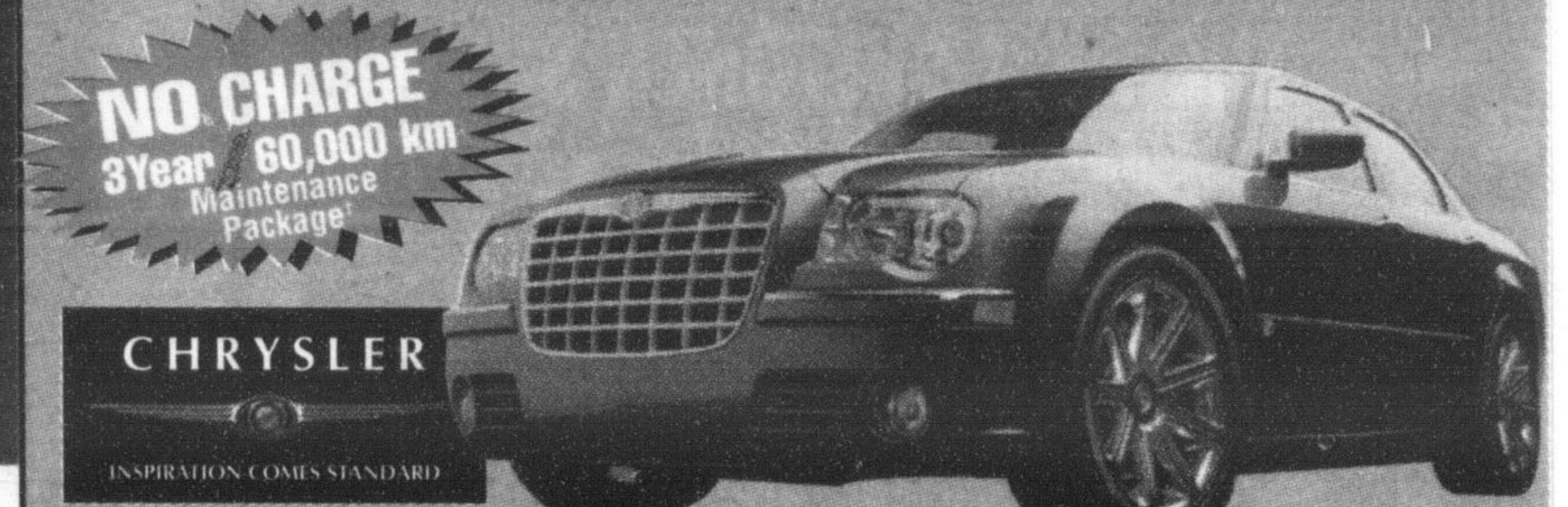
STANDARD FEATURES:
• 3.3L 180hp V6 engine
• Air conditioning
• Power windows, locks and doors

DVD PACKAGE

WARNING
This offer may make you want a bigger family.

LEASE FOR
\$199⁺
A MTH FOR 48 MTHS
with \$4,530 down payment or equivalent trade.

Or lease the **2004 DODGE GRAND CARAVAN** for an additional **\$21⁺** PER MONTH
STANDARD FEATURES: • 11" Extended wheelbase • Quad seating • ABS • Power convenience group • Extra cargo capacity (25.6 cu.ft.)

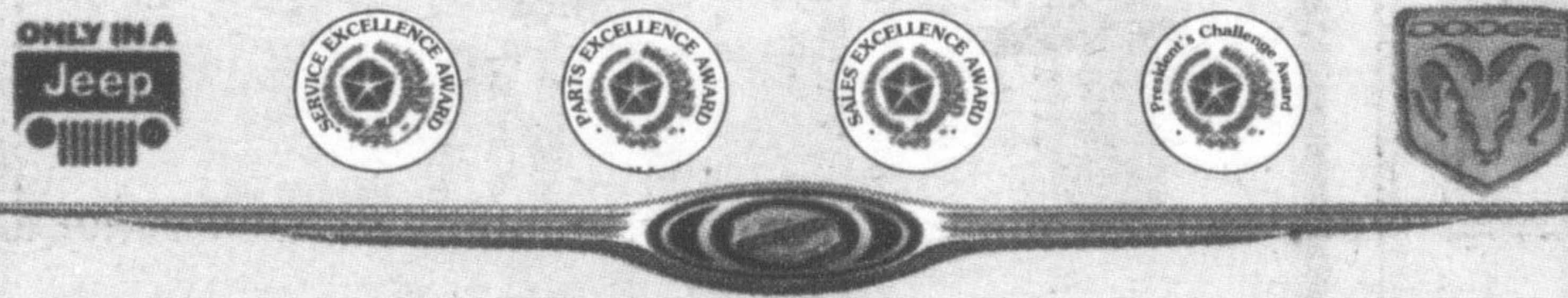


2005 CHRYSLER 300C
Nicer equipped starting at \$29,995

Hunt
Chrysler Jeep

Sales: Mon-Thurs 9-9, Fri. 9-6, Sat. 9-5
Service: Mon-Fri 8-5, Tues. 8-8, Sat. 8-12

service/partswww.huntchrysler.com

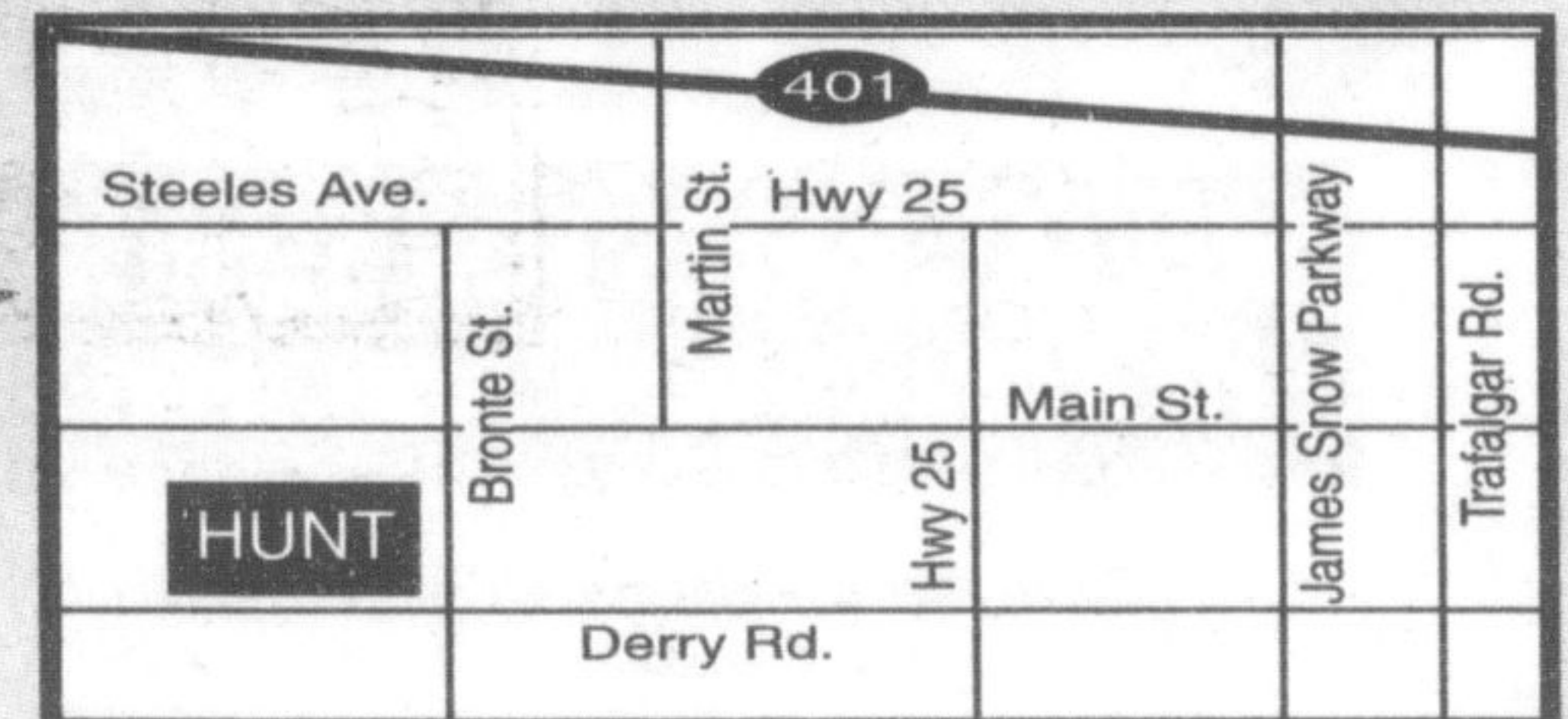


500 Bronte St. S.

Milton: (905) 876-2580

Toll Free: 1-866-848-8816

Email: sales@huntchrysler.com



www.huntchrysler.ca

VISIT YOUR NEIGHBOURHOOD CHRYSLER, JEEP®, DODGE RETAILER OR DODGE.CA Wise customers read the fine print: 1.*** These are limited time offers which may not be combined with any other except Graduate Rebate and apply to retail deliveries on new in-stock 2004 vehicles. Retailer order/trade may be necessary. See retailer for complete details and conditions. 0% purchase financing up to 60 months on 2004 Caravan and Grand Caravan models. example: \$30,000 @ 0%/60 month term: monthly payment is \$500; cost of borrowing is \$0; total obligation is \$30,000. If customers choose 0% financing plus \$2000 Cash Back, they forego additional incentives available to cash purchasers. The effective interest rate factoring in these incentives could be up to 6%. \$2000 Cash Back offer only applies to purchase financing offer and cannot be used in combination with the advertised cash purchase price. †All Leases based on 48-month term. Monthly payment for the Grand Caravan 28C-CYS is \$220 with \$4,530 down payment. Lease finance interest rate is 0%. Kilometers limited to 81,600; charge of \$0.15/km for excess kilometers. †,*** Excludes freight (\$1,100), license, insurance, applicable taxes, registration, retailer charges, and PPSA.***2004 Chrysler, Jeep and Dodge vehicles are backed by the best protection we've ever offered: a 7-year or 115,000 kilometre Powertrain Warranty plus 24-hour roadside assistance. Basic Warranty coverage is for 3 years or 60,000 kilometres. ΔWhiteCheer comes first. Some conditions including a deductible may apply. Offer does not apply to vehicles sold for certain commercial uses or to RAM SRT-10 models. ©Jeep is a registered trademark of DaimlerChrysler Corporation used under license by DaimlerChrysler Canada Inc., a wholly owned subsidiary of DaimlerChrysler Corporation. *0% Financing or lease rates does not apply to 2005 PT Cruiser Convertible.