

# THERE'S NEVER BEEN A SMARTER TIME TO BUY.



Hurry into Honda's Gear up for Spring Event — on now at your local Georgetown Honda Dealer. But only for a limited time.

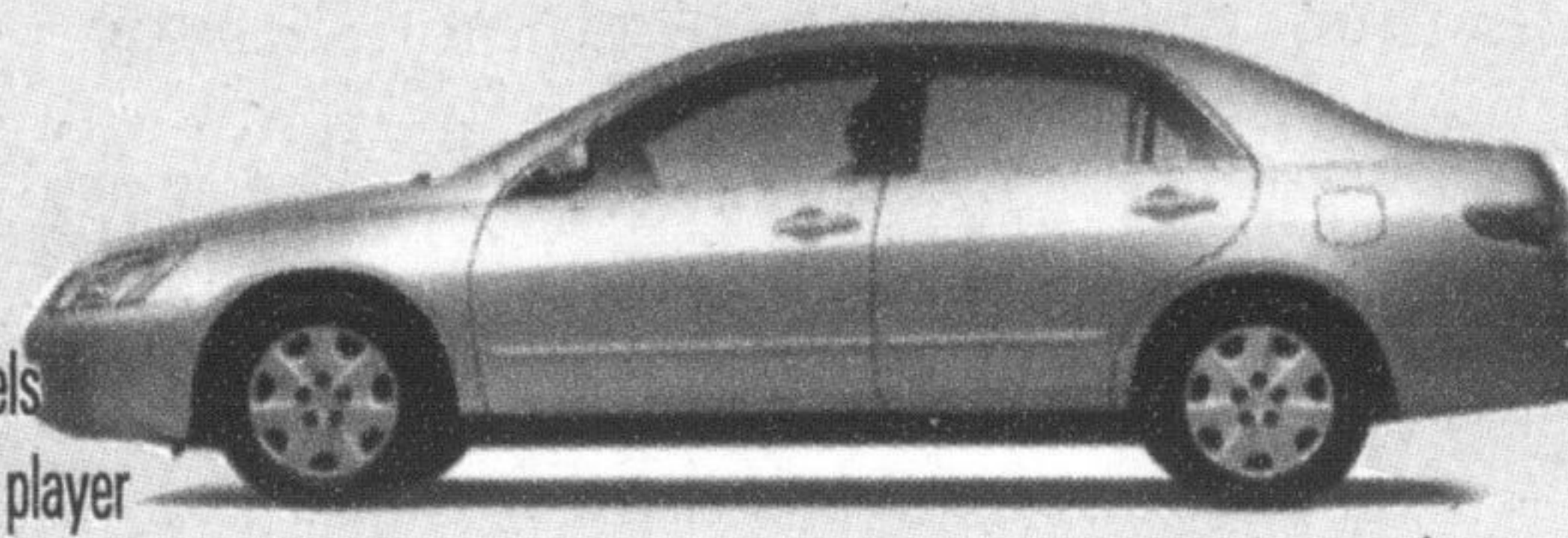
## 2004 HONDA ACCORD LX-G SE

\$26,800\* MSRP

**\$298\***

Per month for 48 months with \$4,463 down. Freight and P.D.E. included. \$0 Security Deposit.

- fog lights
- special alloy wheels
- 6 disc in-dash CD player
- 160 hp, 2.4 litre i-VECTEC™ engine
- A/C, front and side airbags
- power windows, keyless remote



INCLUDES \$2246\* IN NO CHARGE FEATURES

## 2004 HONDA PILOT GRANITE

\$38,800\* MSRP

**\$448\***

Per month for 48 months with \$5,713 down. Freight and P.D.E. included. \$0 Security Deposit.

- 2.4 hp, 3.5 litre, 24 valve VTEC™ engine
- four-wheel drive, 5-speed auto
- sporty alloy wheels
- fender flares, fog lights
- front bumper guard
- side step bars, roof rails with crossbar



## 2004 HONDA CIVIC SE

\$16,800\* MSRP

**\$188\***

Per month for 48 months with \$2,207 down. Freight and P.D.E. included. \$0 Security Deposit.

- A/C with micron filter
- CD player
- power locks
- 115 hp, 1.7 litre engine
- driver and front passenger dual-stage front airbags



INCLUDES \$1700\* IN NO CHARGE FEATURES

**3.8%**

Lease and finance available on the 2004 Civic

**Georgetown Honda**

316 Guelph St., Georgetown  
905-873-1818

THE SMARTER WAY TO BUY.



HONDA

Lease and finance offers are available, on approved credit, only through Honda Canada Finance Inc., until March 31, 2004. Lease payments shown are for 48 months and include \$1,095/\$1,240/\$1,010 for freight and P.D.E. with 96,000 km allowance (12¢/km exceeding 96,000 km applies). \*Based on a new 2004 Special Edition Accord Sedan LX-G, Automatic/Pilot Granite, 5-speed Automatic/Special Edition Civic Sedan, 5-speed Manual (model CM5644E - SE package/YF1814E/ES1534PX) \$298/\$448/\$188 per month for 48 months. A.L.R. 5.8%/5.8%/3.8% (total lease obligation of \$18,767/\$27,217/\$11,231). Down payment or equivalent trade of \$4,463/\$5,713/\$2,207 (zero down payment plans available), plus first monthly payment required. Option to purchase at lease end for \$13,400/\$19,012/\$8,400 plus taxes. \*\*MSRP does not include freight and P.D.E. (\$1,095/\$1,240/\$1,010). \*3.8% conventional financing is available on all new, in-stock 2004 Civic Sedans and Coupes (Offer excludes 2004 Civic Hybrid and SIR /Odyssey for 24, 36, 48, and 60 month terms. Financing example: \$20,000 at 3.8% per annum equals \$366.53 per month for 60 months. C.O.B. is \$1,991.80 for a total obligation of \$21,991.80. Down payment may be required. †Calculation for \$2,246 in no charge features is \$2,946 - based on dealer installed accessory pricing. Additional charge to consumer is only \$700. Savings to consumer is \$2,246. ††Calculation for \$1,700 in no charge features is: Civic DX Coupe/Sedan with manual transmission is \$16,100. Value of additional SE features is \$2,403 - based on dealer installed accessory pricing. Additional charge to consumer is only \$700. Savings to consumer is \$1,703. \*\*\*Taxes, licence, insurance, registration and maintenance fees are additional. Dealer may sell/lease for less. †See Car and Driver magazine January 2004. ††See Car and Driver magazine March 2004. †††Source: Association of International Automobile Manufacturers of Canada. See your neighbourhood Ontario Honda dealer for details.

# Dateline

Dateline is a free listing of coming events only. The column is available to local community groups to assist in promoting their future events. Only charitable or non-profit community groups may use this service. We can only guarantee one issue of publicity closest to the date of the occurrence although more insertions are possible if demand is low.

Notices for Dateline should be handed in at the office of The Champion, 191 Main St. E., mailed to P.O. Box 248, Milton, Ont., L9T 4N9, faxed to (905) 878-4943, or e-mailed to miltoned@haltonsearch.com. The final deadline is noon Friday for Tuesday's edition and noon Wednesday for Friday's edition. Dateline items aren't accepted by telephone.

### Saturday Mar. 13

Milton Mall holds **Saturday Morning Family Storytime** at 10:30 a.m. in the Centre Court, together with the Milton Public Library. Adult accompaniment is required.

**Hornby Euchre** is held at the Hornby community hall on Steeles

Avenue at 7:30 p.m.

Knox Presbyterian Church, 170 Main St. E., holds its **St. Patrick's Lunch and Bazaar** on the lower level from noon to 3 p.m. The cost of the lunch is \$4. Use the Mary Street entrance.

### Saturday Mar. 13 - 18

Crawford Lake Conservation Area kicks off its **March Break Sweetwater Season** each day from 10 a.m. to 4 p.m. and continuing until the end of the week. The official **Sweetwater Day Celebration** takes place March 14. On all days of the event, kids can enjoy Native-style maple demonstrations in the reconstructed Iroquoian Village. There's also a discovery hunt and crafts. For more information, call (905) 854-0234.

Mountsberg Conservation Area continues with its **Mapletowne Sugar Camp** throughout the March Break from 10 a.m. to 4 p.m. The event includes maple syrup demonstrations, guided horse-drawn sleigh tours and, of course, pancakes. The event costs \$5.50 for adults and \$3.75 for kids. For more information, call (905) 854-2276.

### Monday Mar. 15

Halton Regional Police Service presents **PACT (Parents of Adolescents Coming Together)** at 490 Childs Dr. in the community room from 7 to 8:30 p.m. The topic is 'If not your home, where? Reaching that crisis point with your teen'.

The **Milton Horticultural Society** meets at 7:30 p.m. at the Royal Canadian Legion, 21 Charles St., to explore 'Designing For Small Spaces' with Stephanie Morris.

The North Halton branch of the Red Cross holds its two-day **March Break Standard First Aid Course**, which continues March 17. Space is limited. To register, call (905) 875-1459.

### Monday Mar. 15 - 18

Glen Eden Ski and Snowboard Centre begins its **Ski and Snowboard Adventure Camp**, which continues until March 19. Camp packages include lessons with a professional instructor. Those interested should register in advance by calling (905) 878-8455 or visiting [www.gleneden.on.ca](http://www.gleneden.on.ca). • see more **DATeline** page 31

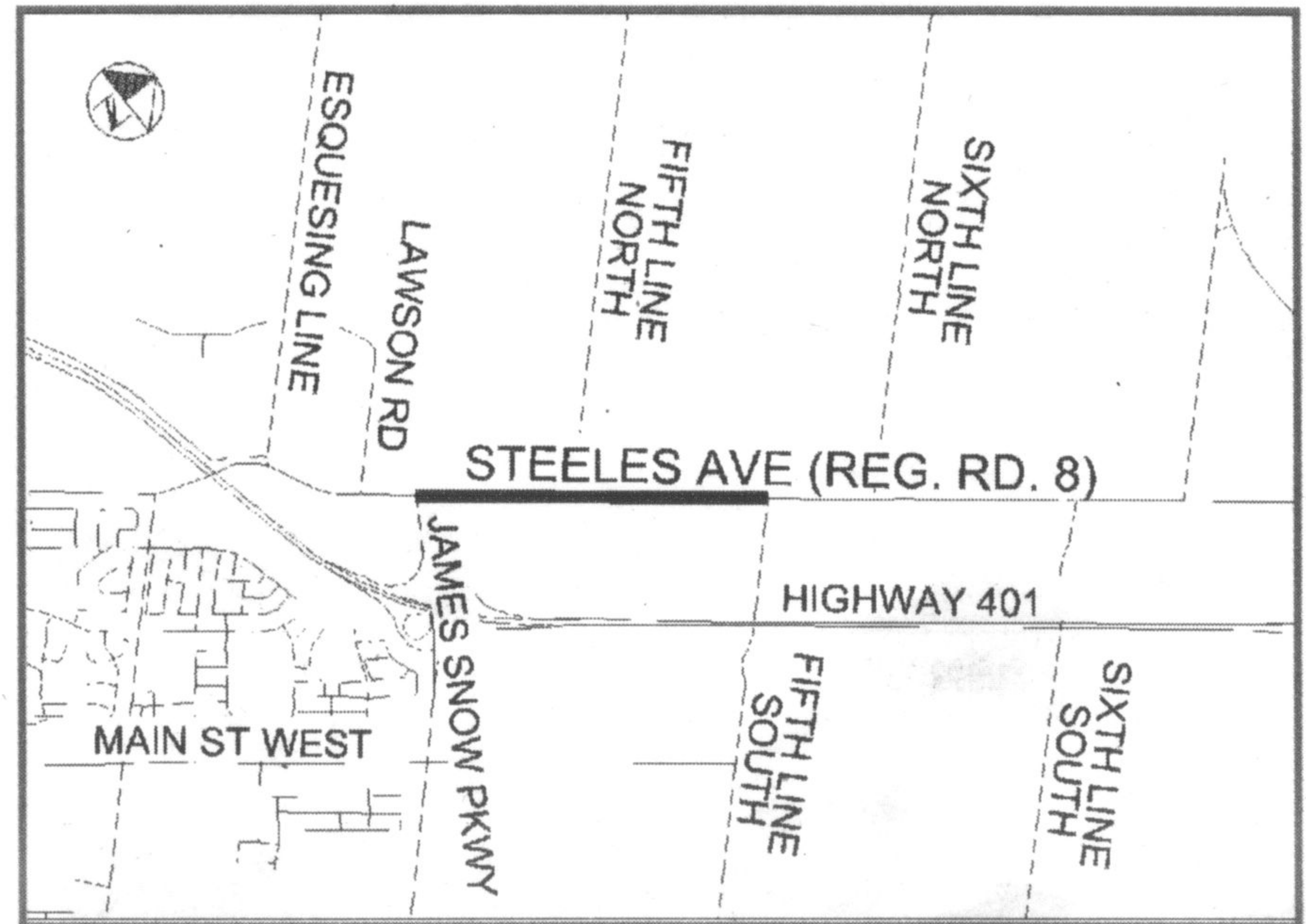


The Regional Municipality of Halton  
A Partnership That Works!



## NOTICE OF CONSTRUCTION

INSTALLATION OF WATERMAINS AND WASTEWATER MAINS (SANITARY SEWERS) ON STEELES AVENUE (REGIONAL ROAD 8) FROM JAMES SNOW PARKWAY TO FIFTH LINE SOUTH, TOWN OF HALTON HILLS



CONTRACT NUMBER:  
SCHEDULED START DATE:  
SCHEDULED COMPLETION DATE:  
CONSTRUCTION SUPERVISOR:

WS-2119-04  
MARCH, 2004  
AUGUST, 2004  
LEONARD VERWEY  
EXT. 7616

1151 Bronte Road, Oakville, ON L6M 3L1  
905-825-6000 Toll free: 1-866-4HALTON (1-866-442-5866) TTY: 905-827-9833  
or visit us at: [www.region.halton.on.ca](http://www.region.halton.on.ca)