

SPRING FEVER

THE 2004 NISSAN SENTRA 1.8



Lease your 2004 Nissan Sentra 1.8 S and destination and delivery is included. For a limited time get **No Security Deposit**. Or choose financing as low as 2.8% and get **No Payments for 90 Days!**

\$14,695**
+ FRT & APP TAXES

With over 40 standard features like 126-HP 1.8 Litre DOHC Engine • 15" Wheels • 8-Way Drivers Seat • Air Conditioning • 60/40 Split Folding Rear Bench Seat • 100-Watt CD with AM/FM Audio System

Lease for only **\$185*** Per Mth

NO SECURITY DEPOSIT
60 mth lease / 24,000 km year

Deposit	Monthly Payment
\$1,800	\$185**
\$800	\$199**
\$0	\$219**

*freight included, taxes extra.

2004 NISSAN ALTIMA EXTRA
\$25,298 MSRP



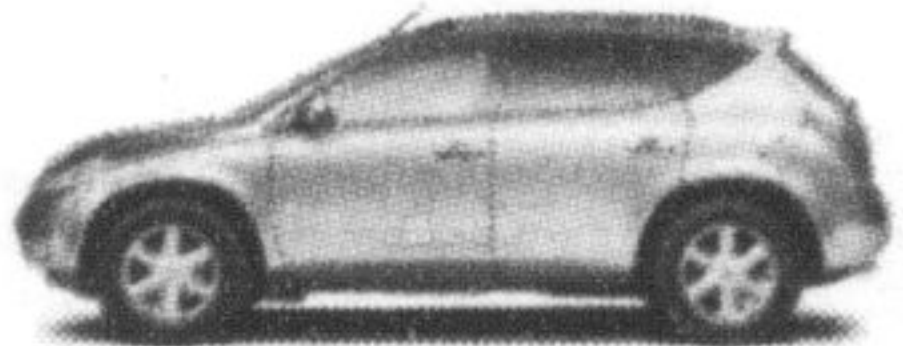
\$22,990**

2004 NISSAN MAXIMA SE WITH LEATHER INT.
\$38,900 MSRP



\$36,888**

2004 NISSAN MURANO SL ALL WHEEL DRIVE
\$39,700 MSRP



\$37,990**

2004 NISSAN X-TERRA XE
\$30,698 MSRP



\$28,995**

DEMOS READY TO BE SOLD

NO FREIGHT • NO AIR TAX
NO FUEL TAX
PLUS HUGE SAVINGS!

2004 CHINOOK PATHFINDER
\$36,200 MSRP



\$33,995*

2004 NISSAN ALTIMA EXTRA
\$24,298 MSRP



\$21,995*

2004 NISSAN QUEST SL w/DVD
\$38,600 MSRP



\$36,995*

2004 NISSAN MURANO SL/AWD MOONROOF
\$40,700 MSRP



\$38,995*

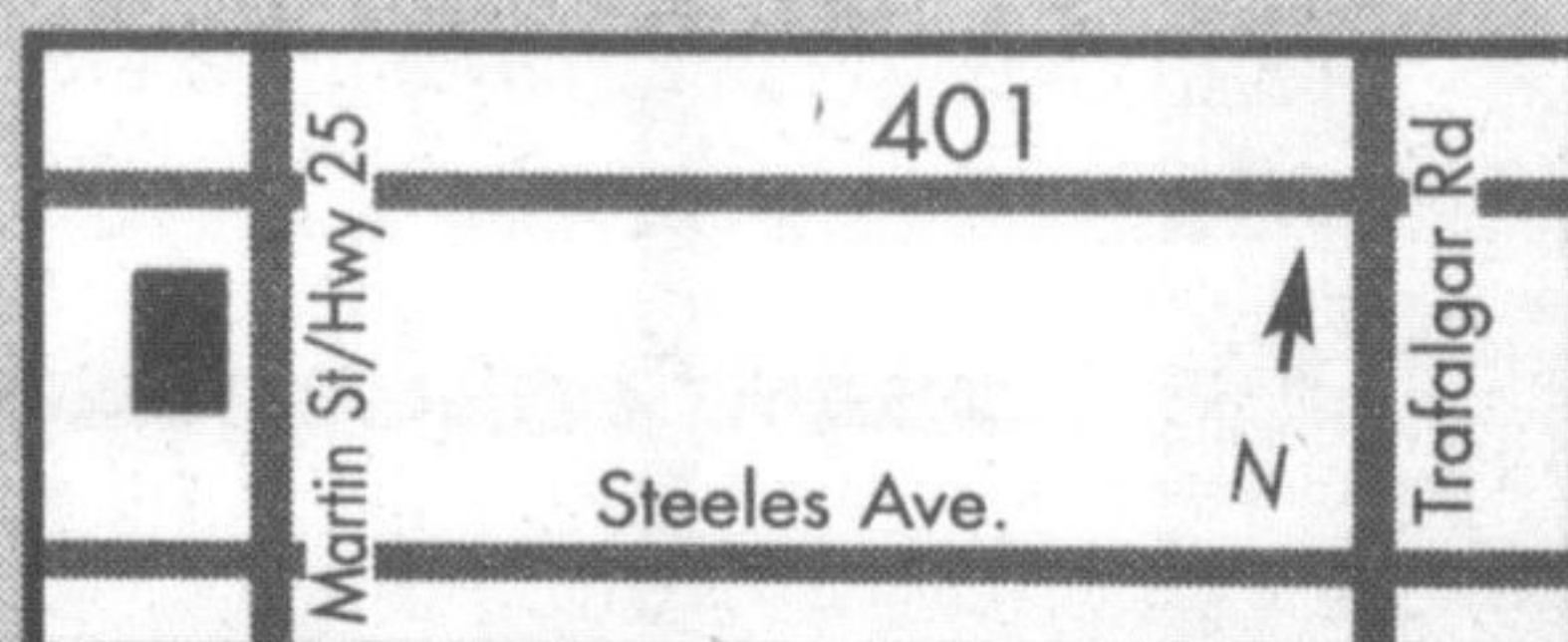
Milton's
NORTH END NISSAN LTD.



SHIFT
www.nissan.ca

610 MARTIN STREET, MILTON
905-878-4137

SALES DEPT. HOURS:
Mon.-Thurs. 9:00 - 9:00 • Fri. 9:00 - 6:00
Sat. 9:00 - 5:00



Penman is re-elected to conservation board

By **STEPHANIE THIESSEN**
The Champion

Councillor Brian Penman was elected vice-chair of the Conservation Halton board of directors at the environmental agency's inaugural meeting recently in Burlington.



Brian Penman

"Our watershed is under pressure with the issue of growth. That issue is near and dear to my heart," Mr. Penman said at the February 26 meeting, just before the ballots were cast.

Local environmental issues he said are important to address include gridlock, new highways, the need for enhanced green space, and the necessity of preserving wetlands.

"Let there be no doubt about the enthusiasm and dedication I bring to Conservation Halton," he said.

Mr. Penman was nominated for the position of chair — which went instead to Jean Williams in a second vote after a tied first one — by Mayor Gord Krantz. He was then nominated for vice-chair by Mr. Krantz, who championed Mr. Penman's

dedication to the agency.

Mr. Penman has returned to Conservation Halton (CH) after a three-year hiatus, before which he served 24 years as a director on CH's board including nine years as chair.

He didn't stay away, though, during the three-year break from the board. He simply crossed over to CH's fundraising arm, the Conservation Halton Foundation.

"This is an organization I love," he said. Mayor Krantz, who has been on CH's board of directors for roughly three decades, was inducted for another three-year term.

Milton appointee Ken Keates, who served on the board for three years, was among the retiring members.

"I will continue to support the foundation — I believe in it," Mr. Keates said during the farewell ceremony.

Ms. Williams was re-elected as chair for her fourth one-year term. She has been a director of CH for 19 years as a citizen appointee from Mississauga.

Speaking to the board before the vote, Ms. Williams said that as a citizen appointee she has no hidden agenda or constituents to please.

"What you see is what you get," she said. "I have no biases, and I'm not dependent

• see **EXCITING** on page 15



You deserve a March Break too. You've got enough on your hands without dealing with traffic and parking. Get a GO Group Pass and dozens of attractions and activities are easy and fun to get to — for less. Up to five people can ride for the cost of just two adults. For schedule and route information, visit our website or just give us a call. (*maximum 2 adults, minimum 1 adult.)

GET ON THE GO

416 869 3200 • 1 888 GET ON GO • WWW.GOTRANSIT.COM TTY ONLY: 1 800 387 3652

*Prices incl. factory to dealer incentives and cannot be combined with any other interest rate or incentive program. **Freight, pdi & taxes extra.