

HOW ABOUT A USED CAR?

WITH GUARANTEED VALUE AND QUALITY,
6-MONTH POWERTRAIN
AND 30-DAY MECHANICAL WARRANTIES

— AND —
AT GREAT PRICES?

Open Sundays 11am to 4pm to serve you better! Can't find it here? Check out www.gorruddautogroup.com

How many more cars do we have on our lot? A lot. In fact we have over
250 automobiles and trucks with more arriving each and every day.

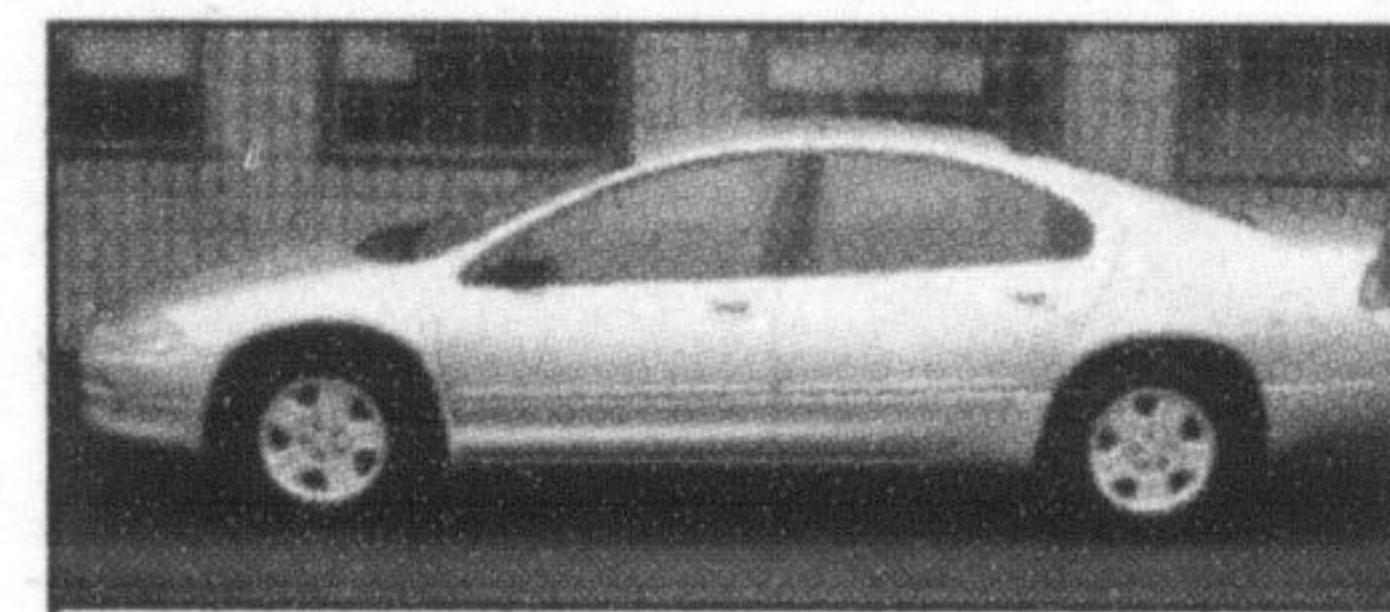
2004 Toyota Corolla CE (only 15,099km!!)	\$17,995
2004 Toyota Matrix XRS (only 20,350km!!)	\$23,995
2004 Toyota Sienna CE (only 27,676km!!)	\$27,995
2003 Cadillac Escalade AWD (only 19,084km!!)	\$56,995
2003 Chevrolet Silverado LT X-Cab 4x4 (only 63,723km!!)	\$30,995
2003 GMC Yukon Denali (only 23,000km!!)	\$49,995
2003 Pontiac Grand Prix GT (only 41,666km!!)	\$23,995
2003 Toyota Avalon XLS (only 58,099km!!)	\$34,995
2003 Toyota Tacoma TRD 4x4 Extended Cab (only 25,851km!!)	\$30,995
2002 Chevrolet Trailblazer LS 4x4 (only 104,368km!!)	\$23,995
2002 Ford Escape XLS (only 95,442km!!)	\$17,995
2002 Ford Explorer Eddie Bauer 4WD (only 75,642km!!)	\$25,995
2002 Ford Windstar Sport (only 74,709km!!)	\$16,995
2002 GMC Sierra SL X-Cab Stepside 4x4 (only 59,176km!!)	\$27,995
2002 Lincoln Continental Luxury Pkg. (only 54,437km!!)	\$26,995
2002 Pontiac Grand AM SE (only 78,658km!!)	\$12,995
2002 Pontiac Montana Extended (only 70,126km!!)	\$18,995
2002 Pontiac Sunfire (only 45,596km!!)	\$12,995
2002 Saturn SL1 (only 30,752km!!)	\$12,995
2002 Toyota Camry SE V6 (Leather & Moonroof)	\$21,995
2002 Toyota Corolla (only 60,572km!!)	\$14,995
2002 Toyota Rav4 AWD C Pkg. (only 44,029km!!)	\$25,995
2001 Buick Park Avenue Supercharged (only 77,729km!!)	\$22,995
2001 Chevrolet Cavalier (only 49,315km!!)	\$ 9,995
2001 Dodge Caravan SE (only 56,763km!!)	\$16,995
2001 Dodge Grand Caravan Sport (only 37,183km!!)	\$18,995
2001 Ford Escape XLT 4x4 (only 61,410km!!)	\$20,995
2001 Ford Explorer Sport 4x4 (only 37,056km!!)	\$18,995
2001 Ford Focus SE (only 41,230km!!)	\$10,995
2001 GMC Jimmy SLT 4x4 (only 62,686km!!)	\$21,995
2001 GMC Yukon SLE (only 82,731km!!)	\$29,995
2001 Jeep Grand Cherokee Laredo (only 70,000km!!)	\$20,995
2001 Jeep Grand Cherokee Ltd. (only 77,580km!!)	\$23,995
2001 Lincoln LS (only 88,226km!!) V8	\$21,995
2001 Nissan Altima GXE (only 43,129km!!)	\$15,995
2001 Oldsmobile Alero GL (only 55,746km!!)	\$13,995
2001 Oldsmobile Aurora 3.5 (only 61,039km!!)	\$18,995
2001 Pontiac Grand Prix GT (only 65,377km!!)	\$17,995
2001 Toyota Celica GT B Pkg. (only 69,555km!!)	\$19,995
2000 Dodge Dakota Sport Club (only 36,312km!!)	\$16,995
2000 Honda Civic SE (only 47,321km!!)	\$12,995
2000 Jeep TJ Wrangler 4x4 (only 71,742km!!)	\$17,995
2000 Toyota Corolla VE (only 100,019km!!)	\$11,995
2000 Toyota Sienna CE (only 98,164km!!)	\$17,995
1998 Acura CL 3.0 (only 103,643km!!)	\$14,995



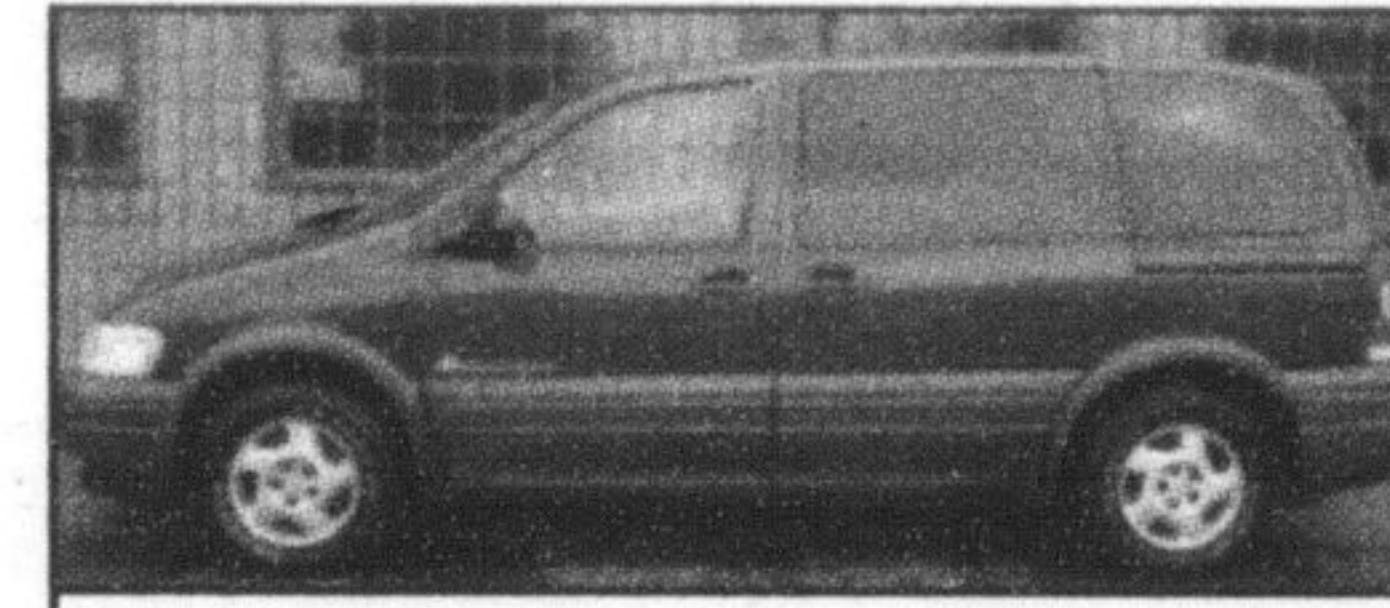
2002 Pontiac Sunfire - 2dr.
- Only 60,000 km! 5 speed **\$9,995**



1995 Saturn SL2 (only 83,000km! car is immaculate! Auto, air & Aluminum rims) **Now \$7,995**





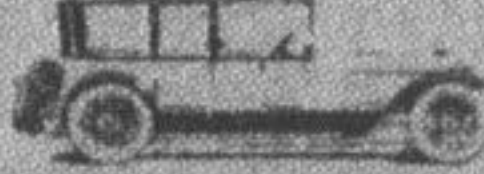
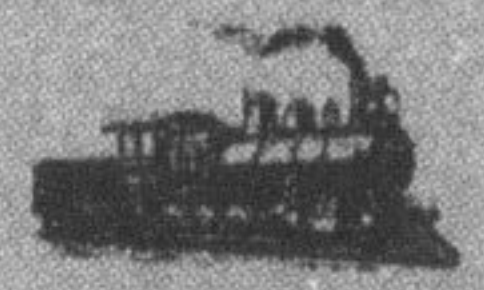

2002 Chrysler Intrepid SE - only 60,000 km!! air, pw, pl & aluminum rims **\$14,995**



2003 Pontiac Montana
- only 73,000 km!! air, pw, pl, tilt, 4 door **\$16,995**



2001 Ford Focus SE
- only 41,000 km!! auto, air, pw, pl **\$10,995**

 <p>Guarantee our Quality A 110-point mechanical and detail inspection, results in vehicles of higher quality.</p>	 <p>We Guarantee our Value We'll refund the difference if you find a comparable car (after factoring in quality, warranties and guarantees) for a lower price within 7 days.</p>	 <p>30-Day or 2500km Exchange Policy If you don't like a vehicle that you've purchased, simply return it for another Gorrud's vehicle - no hassle whatsoever.</p>	 <p>Powertrain Warranty A 8-month/10,000 km warranty included with the sale of every vehicle covering the engine and transmission.</p>	 <p>30-Day Mechanical Warranty Covers 100% of necessary mechanical repairs from back bumper to hood ornament.</p>
--	--	---	--	---

Obviously, some conditions apply to all of the benefits listed above (unfortunately, some rotten apples have tried to take advantage of our generosity and good nature). We'll give you the full details when we see you.

We're one of Southern Ontario's largest used car dealerships!

GORRUD'S AUTO

410 STEELES AVENUE, IN MILTON
905-875-2277

Residents frustrated over bike path issue

By **JASON MISNER**

The Champion

Rob Deslauriers is afraid not much was accomplished following a Town-organized public meeting recently to discuss a proposed controversial paved bike path snaking through Mattamy's east-end Hawthorne subdivision.

He said he was disappointed Town staff didn't discuss in greater detail the half-dozen bike path alternatives that were presented to the crowd of 75 people. "I was expecting to see the feasibility of the alternatives," said the Waldie Way resident.

He's been working with residents since last fall to formulate a compromise to the path design, which has left him and others scratching their heads.

"I think they lost an opportunity to get feedback on viable alternatives. We haven't resolved anything."

Residents filled the Lions Hall at Milton Memorial Arena February 24 to take part in a sometimes-heated public meeting to air opinions about the bike path in the subdivision north and south of Derry Road, east of Fourth Line. The crowd was told their comments will be used to help draft one or two formal recommendations to be presented to the public at an open house in late April or early May. Town council will have to approve the changes.

The bike path has become a sensitive issue because Mattamy's plan to build a \$125,000 paved bike path has outraged residents. It's proposed to run between boulevards and would cross residents' driveways along four particular streets.

Homeowners have argued they knew nothing about a bike path when they bought their homes. Residents have said they're not against a bike path, but want a path better designed.

The complaints eventually prompted the Town to send a letter to Mattamy in mid-September requesting that construction be halted. It's been put off indefinitely.

The meeting was the residents' first formal opportunity to talk about the bike path. Some were opposed to it and some supported it. A few times Town staff - which included senior management staff - had to settle the crowd down to let others finish talking.

Mattamy Homes wasn't represented. Those opposed to the path worried about having to cross a sidewalk and bike path when backing out of their driveways. Others worried about sight-lines being obstructed by trees and the risk of cyclists falling and crashing into fire hydrants.

Others said the bike path design is the right way to go - that putting kids on the road wasn't a good option.

"It's ridiculous to say it's safe to ride on the road," said one resident.

Waldie Way resident Kelly Fowler said the Town needs to resolve this growing problem. "People are getting more and more irritated with this and I think we're seeing a hornet's nest developing here," she said to applause.

Staff told the crowd there are a half-dozen options to the current bike path design, from having it built around the neighbourhood to putting it on the street to doing nothing.

Jason Misner can be reached at jmisner@miltoncanadianchampion.com.