

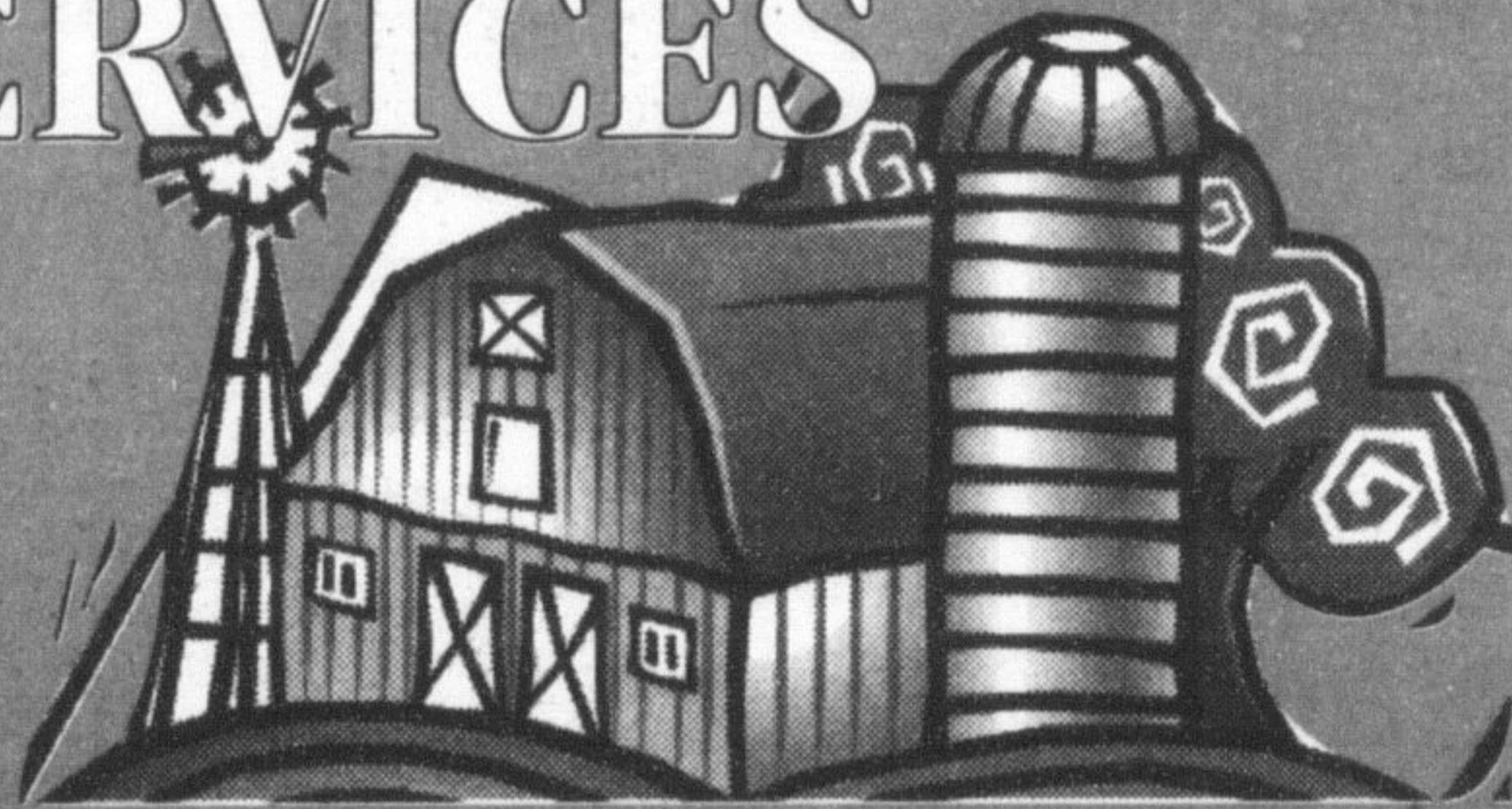


For a good cause

Phil Delvoie, owner of Long Lane Orchards in Campbellville, recently presented a cheque to Literacy North Halton's Edwina Doddington. The money came from a portion of the sale of pumpkins during a fall event and will go toward funding local adult literacy programs.

Photo by WENDY SOMERVILLE

COUNTRY SERVICES



- Furnace, Stove Oil, Gasoline & Diesel Delivery
 - TSSA Licenced Service Technicians
 - Stocked Esso & Mobil Lubricant Warehouse
- www.chalmersfuels.ca

(905) 877-5104 • 1-800-268-0194

HOME HEATING FUELS

JOHNSTON PETROLEUMS

Independent supplier of Quality Shell Furnace Oil, Stove Oil, Gasoline & Diesel Fuels

AUTOMATIC DELIVERY

Serving Halton & Peel Regions with 20 years experience.

32 Steeles Ave, Unit 15 Milton
905-878-4188 • 888-284-9937

HOME HEATING FUEL

Brown's Fuels

Independent suppliers of:

- Furnace Oil
- Stove Oil
- Diesel Fuel
- Gasoline
- Lubes

Just call us, we'll be there!

24 HOUR EMERGENCY SERVICE

Servicing the Halton and Peel Regions

905-855-1222

1-866-855-FUEL

or order online at www.brownsfuels.ca

1 in 10 women will develop BREAST CANCER

For the centre nearest you call:
1-800-668-9304

The risk increases with age. The Ontario Breast Screening Program provides breast examination and a mammogram at no cost to women who are 50 years of age or over. Make your appointment today!

After all... It's your life

The Ontario Breast Screening Program is a program of The Ontario Cancer Treatment and Research Foundation

GALLINGER PRE-OWNED

We make it Affordable



99 Taurus SE Sport 4dr

24v V6, auto, p/w, p/l, p/m, A/C, remote starter, only 76,766kms #2197A

'0 Down / \$1500 Down
\$242. / \$211.



99 Taurus SE Wagon

24v V6, auto, A/C, p/w, p/l only 86,317kms #x3010A

'0 Down / \$1500 Down
\$254. / \$223.



2002 Focus SE 4dr

Auto, A/C, p/l, AM/FM CD Balance of factory warranty. Silver Ext. only 21,776 Kms #2165A

'0 Down / \$2500 Down
\$324. / \$275.



2001 Explorer Sport

4x4, V6, auto, p/w, p/l, p/m, p/s, a/c, leather trim, only 38,793kms #2195A

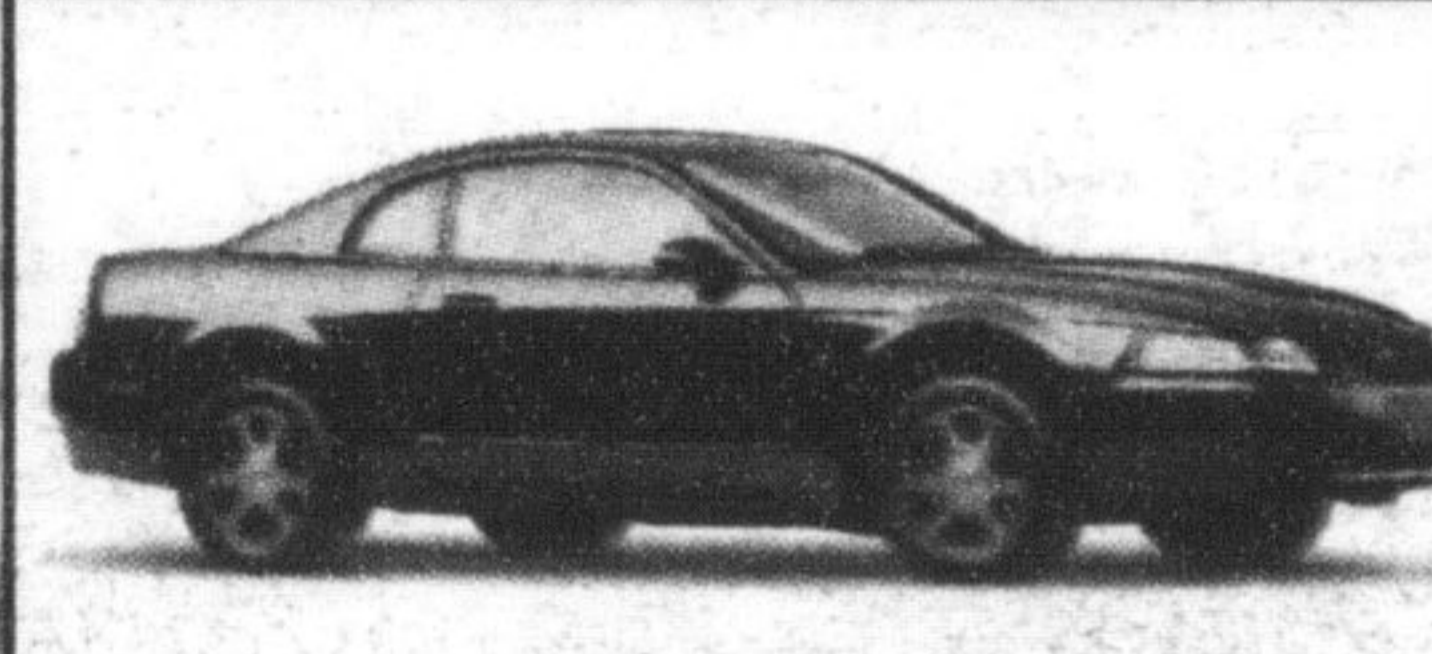
'0 Down / \$3500 Down
\$461. / \$392.



2000 Windstar SEL

V6, a/c, p/w, p/l, p/m, quad seats, Lt gold ext, only 41,621kms #2146A

'0 Down / \$3500 Down
\$368. / \$298.



2000 Mustang GT

V8, Auto, a/c, p/w, p/l, p/m, leather trim, only 51,031kms, #2204A

'0 Down / \$3500 Down
\$404. / \$335.

P.S.T. & G.S.T. Included!
Only extra charges are license fees & additional warranty!

PST & GST included, license fee & additional warranty extra (if needed). Payments are 60 months @ 6.9% or 8.49% (99 models) OAC. Limited time offer, call dealer for details.

GALLINGER

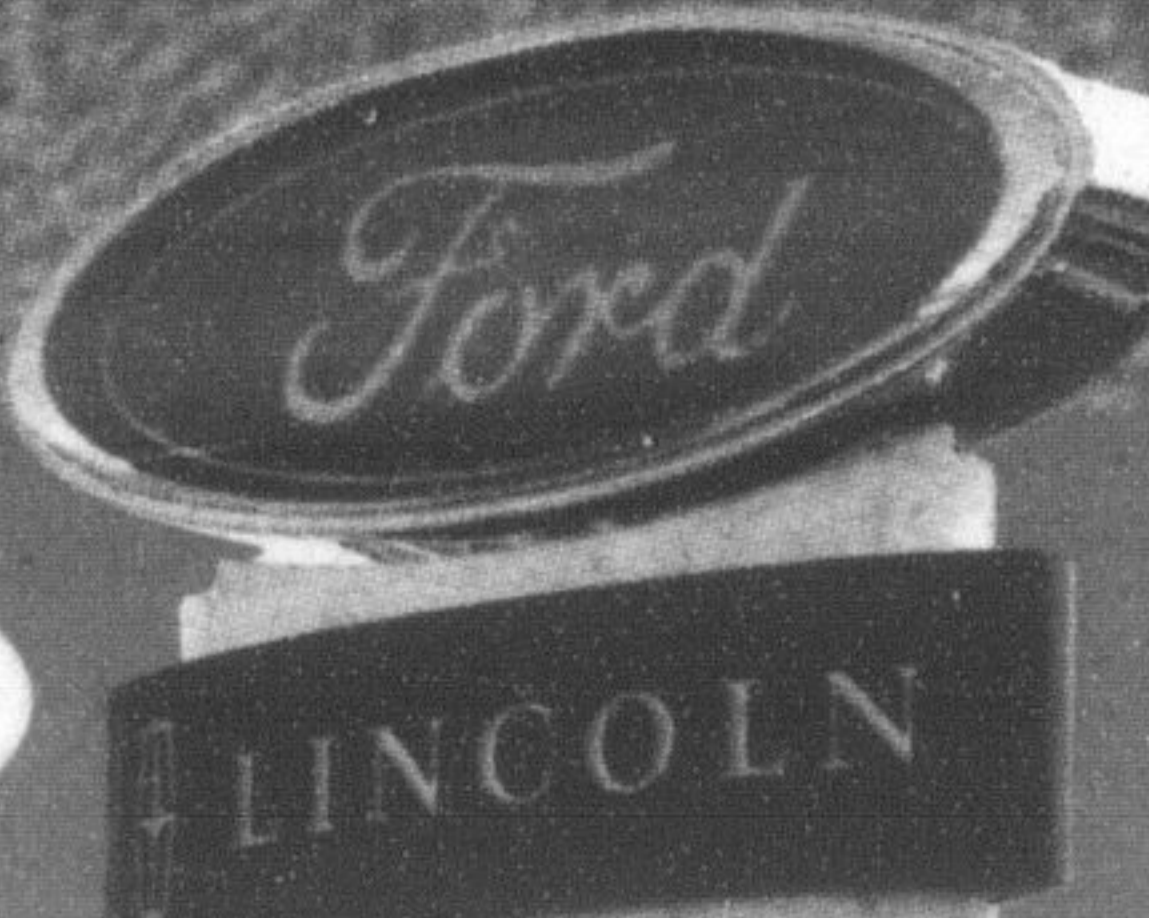
FORD LINCOLN

655 MAIN STREET EAST, MILTON

Visit us at www.gallingerford.com

A Tradition of Value & Trust since 1967

SALES • LEASING • SERVICE • PARTS • COLLISION CENTRE



(905) 875-FORD
3673

Horse News and Views



♦ Milkweed is one of those common nuisance weeds. It is a perennial, reproducing by seed and by horizontal spreading underground roots, which produce new leafy stems. The plant contains cardiac glycosides that are toxic to animals. Normally livestock find the plant distasteful but, during a drought, sheep have been poisoned. Milkweed is difficult to eliminate due to its ability to shut off the root system if herbicides are detected. (Canadian Poisonous Plant Identification System http://sis.agr.gc.ca/pls/pp/poison?p_x=px)

♦ Horses grazing on plants that have sharp awns, spines or burs can develop mouth and teeth problems. These can lead to excessive salivation with drooling or frothy saliva, or oral ulcers. Offending plants include burdock, foxtail barley, long-spined sandbur and raspberry canes. Foxtail barley has a sharp-pointed, bristly segment with forward pointing barbs. Since these barbs will only slide in one direction, they can easily become embedded in the tongue and gums where they act as a foreign body, stimulating excessive salivation and/or deep ulceration. Raspberry canes can cause similar lesions. This is seen occasionally when horses are fenced into woodlots with minimum access to more desirable forage.

♦ Brome grass is a tall, fine grass that grows readily on well-drained soils. It is difficult to plant because of its large, light, fluffy seed, which must be placed in the grain box of the seed drill. Brome grass produces a soft hay which is readily accepted by horses. It is well suited to horse diets with a Ca/P ratio of 1:1-1.2:1 and a protein level of 12-14% when harvested in early to mid bloom. It will continue to grow after the first cut if adequate moisture is available. This makes it a desirable grass in hay/pasture fields for horses.

For further information contact Dr. Bob Wright (519) 846-3412 or visit our website: <http://www.gov.on.ca/oma/eng/lish/livestock>



Ontario Association of Equine Practitioners

