

PONTIAC BUILT FOR DRIVERS



PONTIAC GRAND PRIX GT1

SMARTLEASE

**\$298\***  
per month

OR

CASH PURCHASE PRICE

**\$24,998\***

OR

**0%†** PURCHASE FINANCING

PONTIAC GRAND PRIX

3.8L V6 ENGINE 4 SPEED AUTOMATIC WITH OVERDRIVE WIDE TRACK 16" ALUMINUM WHEELS 6-WAY POWER DRIVER'S SEAT REMOTE KEYLESS ENTRY POWER LOCKS/WINDOWS/MIRRORS AIR CONDITIONING CD STEREO

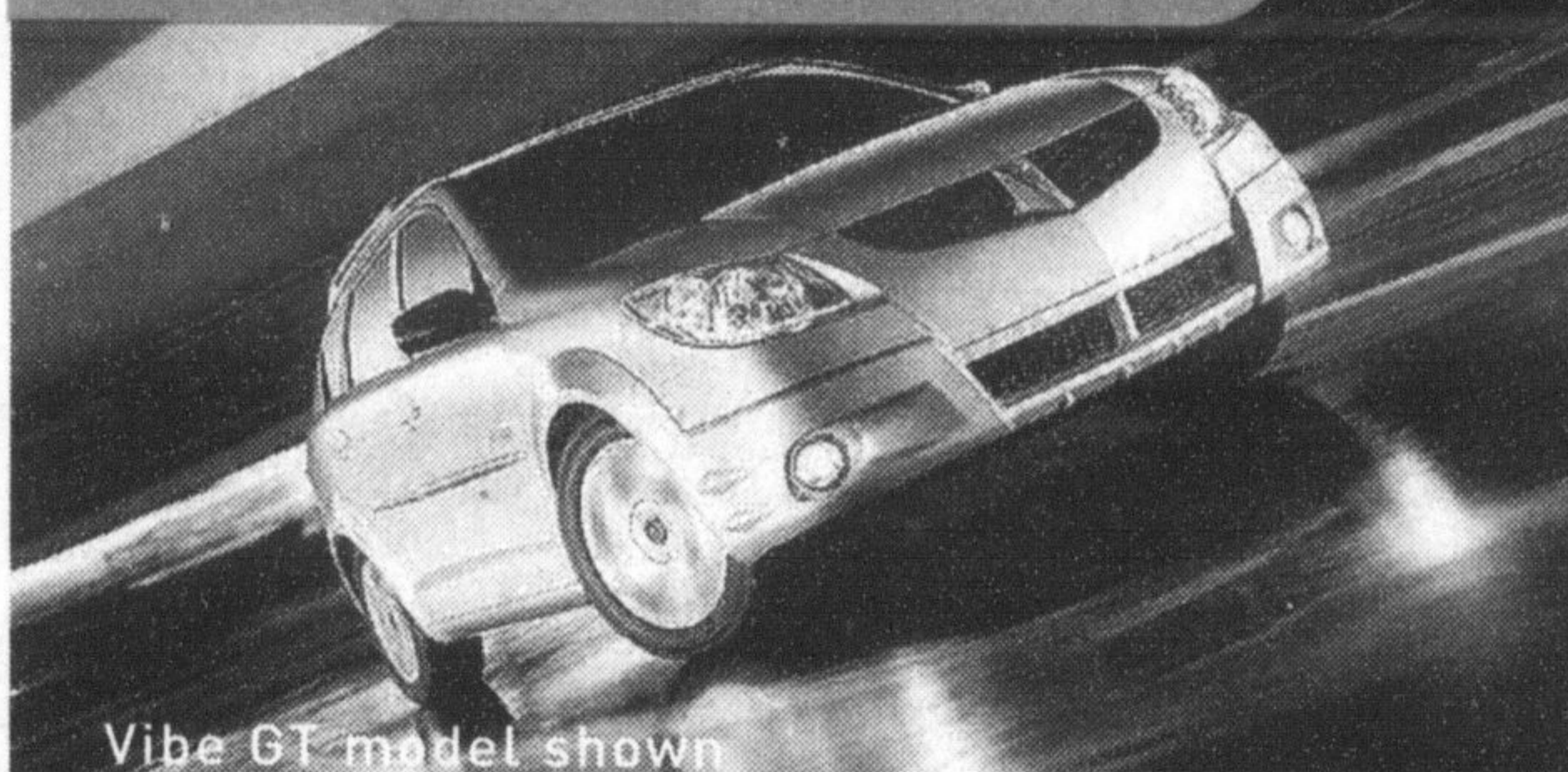
**"...THE ALL NEW 2004 GRAND PRIX IS CLEANER, MEANER, AND MORE REFINED..."**  
—JEFF BARTLETT, MOTORTREND.COM

More standard horsepower than the Civic, Corolla, Sentra and Focus.



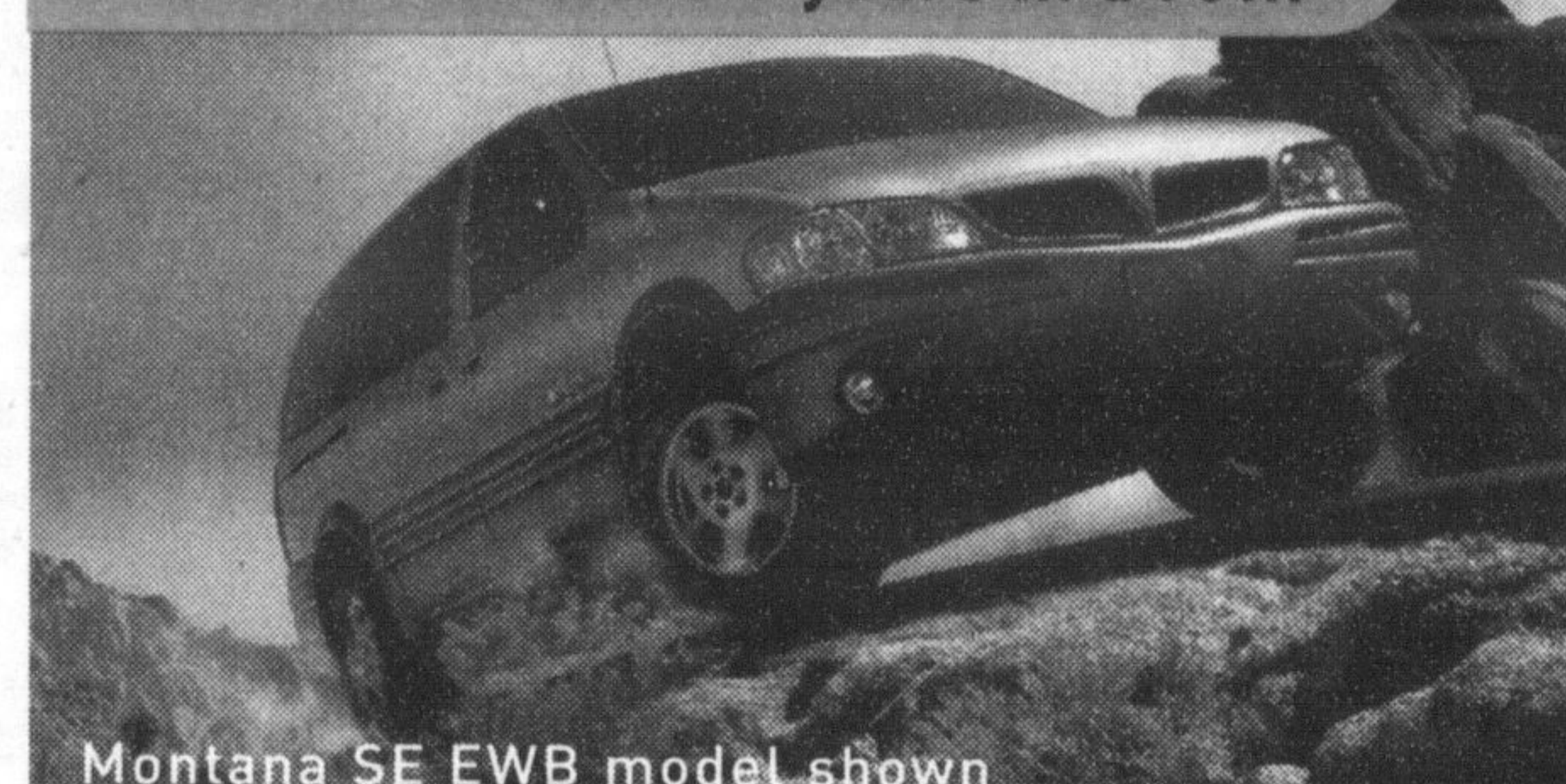
Sunfire GT model shown

2004 EnerGuide award for most fuel efficient vehicle in its class.†



Vibe GT model shown

EnerGuide – The most fuel efficient vehicle in its class 5 years in a row.†



Montana SE EWB model shown

**PONTIAC SUNFIRE SL**

- 2.2L 140 HP ECOTEC Engine • 5 Speed Getrag Manual Transmission • Coupe or Sedan • Theft Deterrent • 5-Year/100,000 km GM Powertrain Warranty with \$0 Deductible • 60/40 Split-folding rear seat

CASH PURCHASE PRICE **\$11,598\*** OR SMARTLEASE **\$154\*** per month \$0 SECURITY DEPOSIT



**PONTIAC VIBE**

- ★★★★★ 5 Star safety rating for frontal occupants in frontal impact test‡ • 1.8L 130 HP Engine • 5 Speed Manual Transmission • Air conditioning • In-dash 115V AC outlet • Adjustable roof rack • CD stereo • Rear and passenger flat-folding seats

PURCHASE **0%†** OR SMARTLEASE **\$218\*** per month FINANCING



**PONTIAC MONTANA**

- ★★★★★ 5 Star safety rating for frontal occupants in side impact test‡ • 5-Year/100,000 km GM Powertrain Warranty with \$0 Deductible • 3.4L 185 HP V6 Engine • Side-Impact air bags • Power locks/windows/mirrors • ABS • Air conditioning • CD stereo • Ask about our No-Charge DVD package

SMARTLEASE **\$218\*** per month \$0 SECURITY DEPOSIT OR **0%†** PURCHASE FINANCING



For the latest information, visit us at [gmcana.com](http://gmcana.com), drop by your local Pontiac • Buick • GMC Dealer or call us at 1-800-GM-DRIVE.

\*Based on a 48 month lease. A down payment or trade of \$2,420/\$1,780/\$3,510/\$4,050 (Grand Prix GT1 R7A/Sunfire SL R7A/Vibe R7B/Montana RWB R7C) is required. Annual cost of borrowing of 1.5%/1.0%/4.4%/1.0% per annum. Option to purchase at lease end is \$12,386/\$5,618/\$9,546/\$10,372 plus applicable taxes. Annual kilometre limit of 20,000 km, \$0.12 per excess kilometre. Other lease options available. \*\*Freight (\$1,000/\$900/\$950/\$1,025), licence, insurance, registration, PPSA, administration fees and taxes not included. †The SMARTLEASE monthly payment and the GMAC purchase finance rate are not available with and are not calculated on the "Cash Purchase Price" shown. The difference between the price for the SMARTLEASE/GMAC Purchase Financing offer and the "Cash Purchase" offer is deemed under provincial disclosure laws to be a cost of borrowing, whether or not the same represents actual interest, and is required to be expressed as an annual percentage which is 6.84%/17.28%. (Grand Prix GT1 R7A/Sunfire SL R7A) ‡Financing on approved GMAC credit only. Down payment, trade and/or security deposit may be required. Monthly payment and cost of borrowing will vary depending on amount borrowed and down payment/trade. Example: \$10,000 at 0% APR, the monthly payment is \$208.33 for 48 months. Discounts or other incentives may be available where consumers opt for a cash purchase price offer. By selecting the purchase financing offer, consumers may be foregoing such discounts and incentives which may result in a higher effective interest rate. \*†Offers apply to 2004 new or demonstrator models of vehicles equipped as described. Offers apply to qualified retail customers in the Ontario Pontiac • Buick • GMC Dealer Marketing Association area only (including Outaouais and excluding Northwestern Ontario). Dealer order or trade may be required. Dealers are free to set individual prices. Limited time offer which may not be combined with other offers. Certain exceptions apply. See your dealer for conditions and details. ‡Testing conducted by the US National Highway Traffic Safety Administration (NHTSA). †Best in class based on Natural Resources Canada 2004 Fuel Consumption Guide Ratings. Pontiac Montana was awarded this designation in 2000, 2001, 2002, 2003 and 2004. \*Graduate Program offer subject to rules and is not to be used in conjunction with \$1,000 GM Student Bonus Offer. ‡Registered trademark of General Motors Corporation. TD Canada Trust licensed user of mark. Visa International Service Association/TD Canada Trust and GM licensed user of marks. ©Trade-mark of The Toronto-Dominion Bank.

