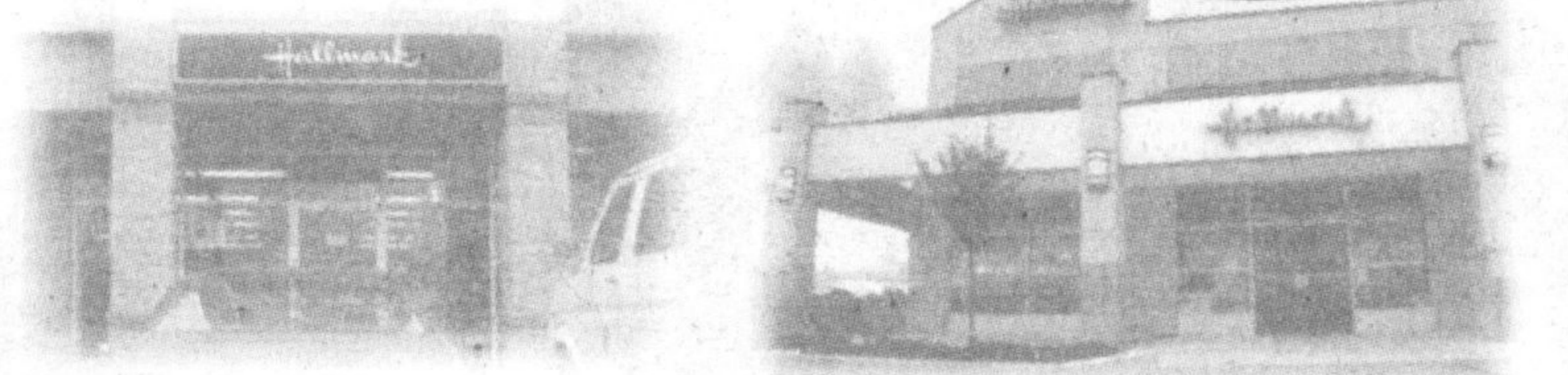


Visit Us For Your
Valentine's Cards & Gifts



Milton Mall 55 Ontario St. 875-3776	Walker Place 3505 Upper Middle 336-4274	Millcroft Centre 2020 Appleby Line 336-0172
---	---	---

Putting it bluntly, the latest Players production terrific

You know a play has successfully grabbed hold of its audience when a particularly amusing scene is met with a spontaneous burst of applause.

When writing about plays, I don't like to fawn over productions. A mix of highlights and lowlights is usually the way to go for a realistic, yet not-too-harsh review.

There's always a first.

Friday I had the pleasure of taking in the Milton Players Theatre Group's latest offering, Crimes of the Heart. To put it bluntly, it was terrific.

Crimes of the Heart — which will continue playing at the Milton Seniors' Activity Centre, 500 Childs Dr., on Thursday and Friday — smoothly blends sentimentality with humour, and then sprinkles on a dash of suspense for added viewing pleasure.

Coming from a group known for its over-the-top comedic endeavours, director Sharon Beddoes admitted from the start that Crimes of the Heart attempts to introduce a different style of production to its loyal audience.

Crimes of the Heart centres around three adult sisters who, after being apart for some time, reunite in their hometown of Hazlehurst, Mississippi, to help their youngest sister in her time of need. Innocent little Babe Botrelle



with STEPHANIE THIESSEN

Back stage

has been accused of shooting her husband.

Although she makes no attempts to deny her actions to her sisters, they stand by her in a show of support that sisters in the audience will be able to understand.

I was impressed by the quality of acting displayed, especially since five of the six cast members are newcomers to Milton Players.

The young, fresh faces of the three sisters — played by Jessica Lee, Samantha Anne Jones and Leanne Dalglish — were a pleasure to watch, and it's no surprise that two of the sisters graduated from university theatre programs.

A particularly engaging performance was given by Samantha Anne Jones, who played the gutsy, outspoken middle sister, Meg, who has returned to Hazlehurst after a less than stellar singing career.

Ms Jones has the ability to speak volumes with a roll of her eyes, and was such a natural in her role that I

found myself watching her even when the conversational focus was on the other characters.

Joan Patch — the lone experienced Milton Player — played her boisterous, holier-than-thou character with skill, and two thumbs up go to Daniel Beddoes and Norm Champoux for rising to the challenge and taking their places on stage for the first time ever.

It took me a while to get used to the characters' heavy southern accents, but they grew on me, and during intermission I realized I was thinking with a southern accent — which has to be the true indicator of an effective accent.

After the cast took their final bows, I walked away with a feeling of contentment. The play was poignant and meaningful, but I didn't feel that my emotions had been manipulated.

In the show's program, Ms Beddoes wrote that she was dedicating the play to her sisters. What a beautiful gift to receive.

Tickets for Thursday and Friday's 8 p.m. shows cost \$15 and can be purchased at Delacourt's, on Main Street, by cash or cheque or by calling (905) 875-0629.

Stephanie Thiessen can be reached at sthiessen@miltoncanadianchampion.com.

You're
Invited...

Wednesday, February 11th, 2004

from

5:00 pm - 9:00 pm

To Our
\$10,000 Kitchen
Give-A-Way Event Night!

- Door Prizes including:
 - Banvil Ceiling Fan, Sterling BBQ, plus other great prizes!
- In Store Demos:
 - Home Decorating
 - BBQ Cooking Demos
- Cake & Refreshments

Evening Highlight
8:30pm

Mayor Gord Krantz
will draw the winner of a
new Kitchen from the Finalists!



MILTON HOME HARDWARE
BUILDING CENTRE

385 STEELES AVE. EAST, MILTON
TEL: (905) 878-9222 FAX: (905) 878-4049

