

HOW ABOUT A USED CAR?

WITH GUARANTEED VALUE AND QUALITY,
6-MONTH POWERTRAIN
AND 30-DAY MECHANICAL WARRANTIES

— AND —
AT GREAT PRICES?

Open Sundays 11am to 4pm to serve you better! Can't find it here? Check out www.gorruksaufogroup.com

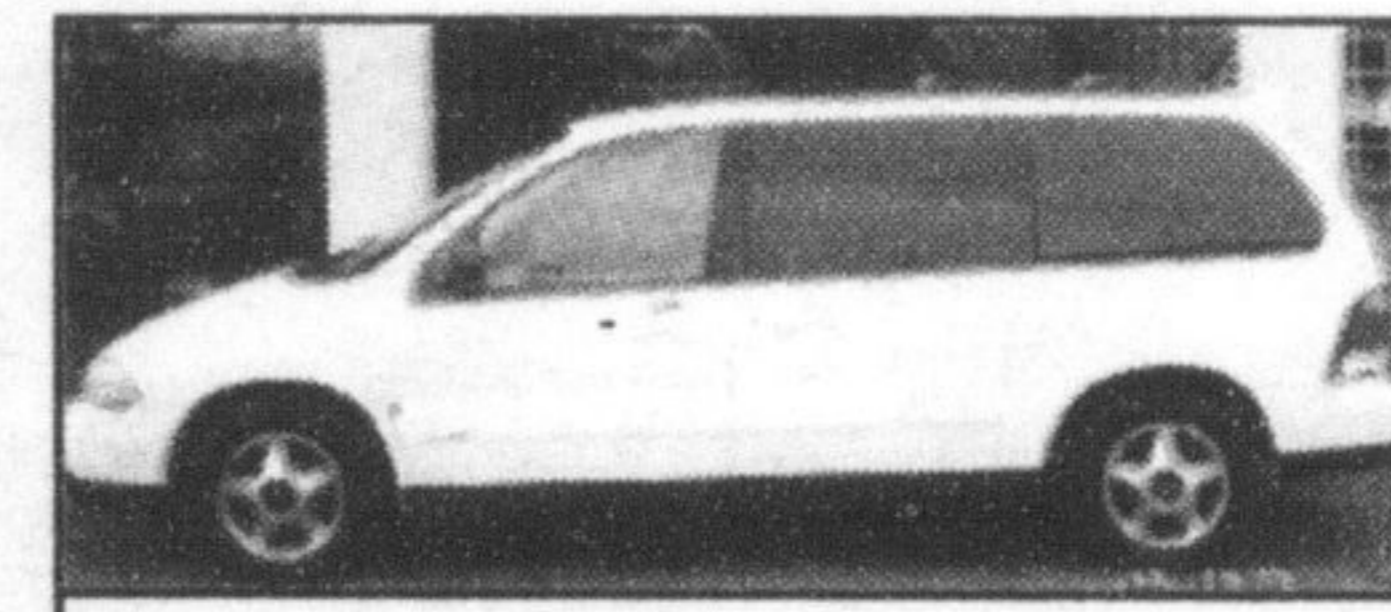
How many more cars do we have on our lot? A lot. In fact we have over **350** automobiles and trucks with more arriving each and every day.

2003 GMC Sierra SLT Crew Cab Heavy Duty 1/2 Ton 4x4 (only 19,483km!!)	Now \$36,995
2003 GMC Sierra SL 3/4 ton 2500 Heavy Duty 3/4 Ton 4x4 (only 30,601km!!)	Now \$27,995
2003 Pontiac Sunfire (only 17,577km!!)	Now \$12,995
2003 Toyota Avalon XLS (only 58,099km!!)	Now \$33,995
2003 Toyota Camry LE (only 15,159km!!)	Now \$22,995
2003 Toyota Echo (only 19,328km!!)	Now \$13,995
2003 Toyota Matrix XR 4WD (only 62,880km!!)	Now \$19,995
2003 Toyota Tacoma TRD 4x4 Extended Cab (only 25,851km!!)	Now \$30,995
2002 Ford Focus SE Wagon (only 33,326km!!)	Now \$12,995
2002 Ford Windstar Sport (only 74,709km!!)	Now \$16,995
2002 GMC Sierra SLE Crew Cab Heavy Duty 1/2 Ton 4x4 (only 97,041km!!)	Now \$27,995
2002 GMC Sierra SL Stepside 4x4 Extended Cab (only 59,175km!!)	Now \$27,995
2002 Lincoln LS (only 62,143km!!)	Now \$23,995
2002 Pontiac Grand Am SE (only 78,658km!!)	Now \$12,695
2002 Pontiac Transport Montana (only 65,187km!!)	Now \$14,995
2002 Toyota Rav 4 AWD 'C' Pkg (only 44,029km!!)	Now \$24,995
2001 Chev Blazer LS 4x4 (only 58,791km!!)	Now \$17,995
2001 Chev Venture LS Extended (only 73,526km!!)	Now \$16,995
2001 Chev Venture (only 66,997km!!)	Now \$13,995
2001 Ford Escape XLT 4x4 (only 87,112km!!)	Now \$19,995
2001 Ford Explorer Sport Trac 4WD (only 71,283km!!)	Now \$21,995
2001 Honda CRV GT AWD (only 48,432km!!)	Now \$21,995
2001 Jeep Grand Cherokee Ltd. (only 57,289km!!)	Now \$27,995
2001 Olds Aurora 3.5 (only 71,273km!!)	Now \$18,995
2001 Olds Silhouette GLS Extended (only 72,266km!!)	Now \$17,995
2001 Pontiac Grand Am GT (only 76,557km!!)	Now \$13,995
2001 Pontiac Grand Prix GT (only 72,950km!!)	Now \$15,995
2001 Pontiac Montana Extended (only 59,896km!!)	Now \$17,995
2001 Saturn SL2 (only 49,003km!!)	Now \$11,995
2001 Toyota Highlander (only 70,782km!!)	Now \$27,995
2000 Chev Cavalier (only 70,777km!!)	Now \$11,995
2000 Chrysler 300M (only 62,032km!!)	Now \$16,995
2000 Chrysler Neon LE (only 75,204km!!)	Now \$7,995
2000 Honda Civic SE (only 47,321km!!)	Now \$12,995
2000 Infiniti QX4 (only 95,789km!!)	Now \$24,995
2000 Nissan Altima GXE (only 73,346km!!)	Now \$14,495
2000 Nissan Maxima SE (only 88,016km!!)	Now \$18,995
2000 Nissan Pathfinder XE (only 96,313km!!)	Now \$18,995
2000 Pontiac Grand Prix GTP (only 114,771km!!)	Now \$14,995
2000 Toyota Sienna LE (only 73,901km!!)	Now \$19,995
1999 Dodge Dakota Sport 4x4 X-Cab (only 155,781km!!)	Now \$13,995
1999 Nissan Pathfinder LE (only 114,510km!!)	Now \$18,995
1999 Olds Aurora (only 93,676km!!)	Now \$13,995
1999 Toyota 4Runner SR5 (only 97,548km!!)	Now \$20,995
1998 Buick LeSabre Ltd. (only 95,038km!!)	Now \$12,995

THIS WEEK'S FEATURE VEHICLES.



2003 Toyota Avalon XLS (only 58,000km! leather, moonroof) Now \$33,995



2002 Ford Windstar Sport (only 74,000km! quad seats, rear air) Now \$16,995



2002 Saturn SL1 (only 30,000km! Air conditioning) Now \$11,495



2000 Chev Cavalier (2dr, only 70,000km! Air conditioning) Now \$8,995



2000 Pontiac Grand Prix GT (4dr, only 65,000km! Leather HUD) Now \$16,995



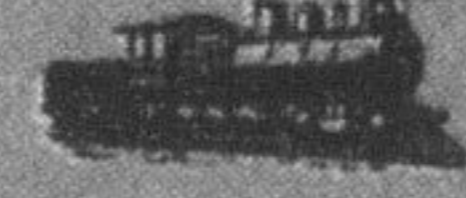
Guarantee our Quality
A 110-point mechanical and detail inspection, results in vehicles of higher quality.



We Guarantee our Value
We'll refund the difference if you find a comparable car (after factoring in quality, warranties and guarantees) for a lower price within 7 days.



30-Day or 2500km Exchange Policy
If you don't like a vehicle that you've purchased, simply return it for another Gorruks' vehicle - no hassle whatsoever.



Powertrain Warranty
A 6-month/10,000 km warranty included with the sale of every vehicle covering the engine and transmission.



30-Day Mechanical Warranty
Covers 100% of necessary mechanical repairs from back bumper to hood ornament.

Obviously, some conditions apply to all of the benefits listed above (unfortunately, some rotten apples have tried to take advantage of our generosity and good nature). We'll give you the full details when we see you.

We're one of Southern Ontario's largest used car dealerships!

GORRUD'S AUTO

410 STEELES AVENUE, IN MILTON
905-875-2277

Town's plowing budget snowed under

By **JASON MISNER**

The Champion

Old Man Winter is beating up on the Town of Milton's 2004 snow plowing budget.

The Town has budgeted \$780,000 for snow plowing/removal duties that include salt and sand costs, and half of it has already been spent thanks to major snow falls in January.

"That's definitely high," said Paul Cripps, Milton's engineering director.

The \$1.1 million winter control budget, which operates on a calendar year, includes other costs like street sweeping in the spring and equipment costs like fuel, in addition to plowing and removal.

The Town's snow-plowing army consists of 15 trucks that plow and spread salt/sand along 530 km of local and regional roads. The Town also has 11 contractors to use, if needed.

Everyone has been working hard to clear the white stuff as quickly as possible, Mr. Cripps said. "That whole month was very, very busy," he said, noting some workers start shifts as early as 4 a.m. "We're hoping Mother Nature co-operates."

She hasn't so far.

A big reason the winter control budget is feeling snowed under is that snow accumulation in Milton last month was nearly double the average.

Camil Laprise, an Environment Canada forecaster, said readings at Toronto's Pearson airport, which would apply to Milton, show 63.2 cm fell in January compared to an average of 32.3 cm.

Also, temperatures were almost three degrees colder than normal.

Other factors impacting the winter control budget this year, Mr. Cripps said, is the Town is responsible for 35 km more of roads due to growth and through downloading from Halton Region. Also, it's had to regularly plow snow that has drifted onto roads, mostly in rural areas where there are open fields.

"There's a tremendous amount of drifting up there," Mr. Cripps said. "The temperature has been so cold the snow is light and it drifts a lot. Trucks were going up there (in Nassagaweya) 24 hours a day."

Warmer temperatures recently have allowed snow to become more compact, resulting in less drifting.

Heavy snow falls earlier last year and a long winter were factors in the Town's 2003 winter control budget ballooning by an extra \$470,000. The difference was covered by reserves.

When it's time to plow, the Town has a priority list with 11 identified routes — including the rural and urban areas — that first get attention. They include the main arterial roadways like Guelph Line, Main Street, Steeles Avenue and Trafalgar Road. Next on the list are side streets and secondary rural roads like Eighth Line.

Also, the Town only salts sidewalks in the urban core area and sidewalks around schools. The rest are the responsibility of property owners.

Jason Misner can be reached at jmisner@miltoncanadianchampion.com.