

# IT'S A NEW YEAR. HOW ABOUT A USED CAR?

**Open Sundays 11am to 4pm to serve you better!**  
**Can't find it here? Check out [www.gorruksautogroup.com](http://www.gorruksautogroup.com)**

How many more cars do we have on our lot? A lot. In fact we have over 350 automobiles and trucks with more arriving each and every day.

2004 Toyota Corolla CE (only 14,399km!!)	Now \$17,495
2002 Toyota Sienna CE (only 30,332km!!)	Now \$27,995
2003 GMC Sierra SLT Crew Cab HD Ton 4x4 (only 19,483km!!)	Now \$36,995
2003 GMC Sierra SL 2500 HD Ton 4x4 (only 30,601km!!)	Now \$27,995
2003 Toyota Avalon XLS (only 58,099km!!)	Now \$33,995
2003 Toyota Corolla Sport (only 49,419km!!)	Now \$19,995
2002 Buick LeSabre Ltd. (only 74,975km!!)	Now \$21,995
2002 Ford Escape XLS (only 95,442km!!)	Now \$18,895
2002 Ford Explorer XLT (only 54,353km!!)	Now \$25,995
2002 Ford Focus ZX5 (only 30,058km!!)	Now \$14,995
2002 Ford Taurus SE (only 64,905km!!)	Now \$12,995
2002 Ford Windstar LX (only 77,668km!!)	Now \$15,995
2002 Lincoln LS (only 62,143km!!)	Now \$23,995
2002 Olds Alero GX (only 73,068km!!)	Now \$10,995
2002 Pontiac Transport Montana (only 65,187km!!)	Now \$14,995
2002 Toyota Camry SE (only 86,088km!!)	Now \$22,995
2002 Toyota Rav4 AWD C Pkg (only 44,029km!!)	Now \$24,995
2001 Chev Venture (only 60,376km!!)	Now \$12,995
2001 Chrysler 300M (only 61,600km!!)	Now \$18,995
2001 Dodge Grand Caravan Sport (only 98,253km!!)	Now \$14,995
2001 Ford Focus SE Wagon (only 67,573km!!)	Now \$11,995
2001 Honda CRV GT AWD (only 48,233km!!)	Now \$21,995
2001 Olds Aurora (only 68,000km!!)	Now \$18,995
2001 Olds Intrigue GL (only 74,711km!!)	Now \$14,995
2001 Olds Silhouette GLS Extended (only 72,266km!!)	Now \$17,995
2001 Pontiac Grand AM SE (only 70,887km!!)	Now \$9,995
2001 Pontiac Grand Prix GT (only 72,950km!!)	Now \$15,995
2001 Saturn SL2 (only 49,003km!!)	Now \$11,995
2000 Cadillac Deville (only 76,991km!!)	Now \$24,995
2000 Chev Blazer LS (only 57,224km!!)	Now \$15,995
2000 Chev Tracker Sport 4x4 (only 39,021km!!)	Now \$14,995
2000 Chrysler Neon LE (only 75,204km!!)	Now \$7,995
2000 Dodge Caravan (only 118,964km!!)	Now \$9,995
2000 Nissan Maxima SE (only 88,016km!!)	Now \$18,995
2000 Nissan Pathfinder XE (only 96,313km!!)	Now \$18,995
2000 Pontiac Transport Montana (only 63,292km!!)	Now \$12,995
2000 Saturn SL1 (only 145,140km!!)	Now \$5,995
2000 Toyota Corolla VE (only 100,019km!!)	Now \$11,495
2000 Toyota Sienna CE (only 98,164km!!)	Now \$16,575
2000 Toyota Solara SLE (only 60,198km!!)	Now \$19,390
1999 Chev Tahoe LT (only 106,226km!!)	Now \$18,995
1999 Ford Explorer Sport (only 89,902km!!)	Now \$12,995
1999 Olds Aurora (only 93,676km!!)	Now \$13,995
1999 Toyota 4 Runner SR5 (only 97,548km!!)	Now \$20,995
1999 Toyota Rav4 (only 94,475km!!)	Now \$14,995
1998 Buick Skylark (only 72,784km!!)	Now \$8,995



**2000 Infiniti QX4**  
(leather, power moonroof) **Now \$24,995**



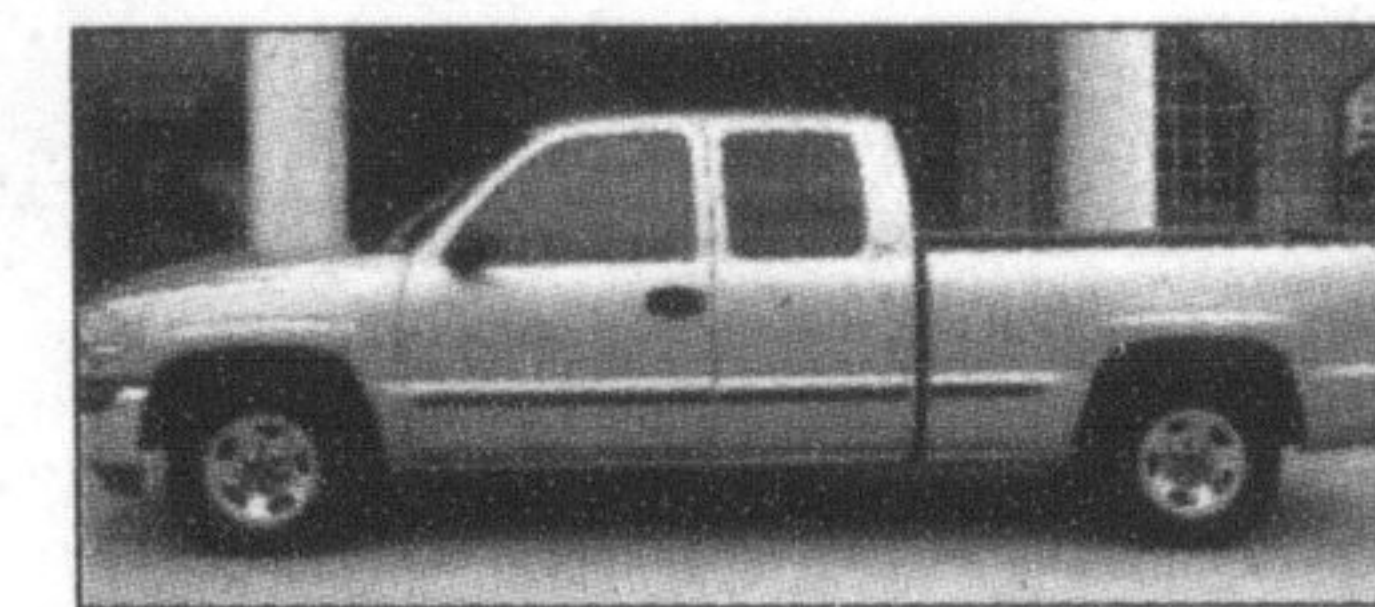
**2002 Lincoln Continental "Luxury Package"**  
(only 50,000km!! leather, moonroof) **Now \$26,995**



**2001 Chev Venture Extended** (only 73,000km!!  
dual doors, pw, pl & more) **Now \$13,995**



**2001 Ford Focus SE**  
(only 57,000km!! air, pw, pl & more) **Now \$9,995**



**2000 GMC Sierra SL X-Cab** (only 82,000km!!  
V8, auto, air, tilt, delay wipers) **Now \$16,995**

## Eight 401 accidents happen within minutes

By **STEPHANIE THIESSEN**

*The Champion*

A nasty combination of freezing rain and a winding stretch of the highway made for a busy Monday night for fire, ambulance and police, with eight collisions occurring within minutes of each other.

OPP Const. Paul Maudsley said by about midnight there were reports of six property damage accidents and two personal injuries on Hwy. 401 between James Snow Parkway and Guelph Line.

Between 11 p.m. and midnight, Milton firefighters were called to three accidents on Hwy. 401 between Regional Road 25 and Guelph Line.

OPP closed the highway from Regional Road 25 to Guelph Line from 11:40 p.m. to 12:30 a.m. to clean up, police said.

All three of the accidents Milton Fire Department were called to involved jack-knifed tractor-trailers, said Capt. Rick Mitchell, who was at each scene.

"That night, when we got the first call, the roads were very icy," Capt. Mitchell said. "It was drizzly, and the roads were slippery."

The stretch of Hwy. 401 near Kelso Conservation Area from Regional Road 25 to Guelph Line often seems especially slippery, he said. "In the hollow at Kelso, it seems to get a bit worse."

Firefighters' first call of a jack-knifed tractor-trailer came in just after 11 p.m. Personnel arrived to find an accident in the eastbound lanes of Hwy. 401, about a kilometre east of the Guelph Line exit. Two trucks and at least four other vehicles were involved, with most ending up in the ditch, Capt. Mitchell said.

When firefighters saw traffic was backed up east of the accident, they drove and found a second accident about half a kilometre away.

This time, there were two jack-knifed transport trucks and pinned under one of the trailers was a Honda. Fortunately, Capt. Mitchell said, occupants of the car weren't trapped and were out of the car when firefighters arrived. Several other vehicles involved in the incident were "smashed up," Capt. Mitchell said, one an airport transport van. In total, there were six to eight vehicles involved.

"Fluid was leaking from the vehicles but there was no extrication required so we just had to clean up the leaks. We just finished that when we got another call."

The third accident — and the most serious — was in the westbound lanes beside Kelso Lake, where the highway dips down. It was about midnight when the call was received. Once again, a tractor-trailer had jack-knifed. The driver was unconscious and slumped over the steering wheel, but breathing, Capt. Mitchell said.

He was transported to Milton District Hospital by Halton EMS. No other vehicles were involved.

OPP Const. Maudsley said he suspects drivers weren't adjusting their speed to take into account the weather and road.

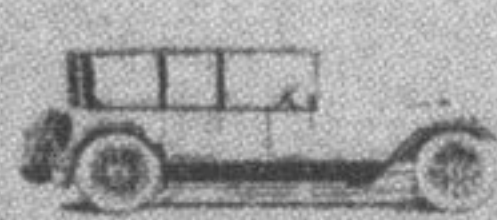
Stephanie Thiessen can be reached at [sthiessen@miltoncanadianchampion.com](mailto:sthiessen@miltoncanadianchampion.com).



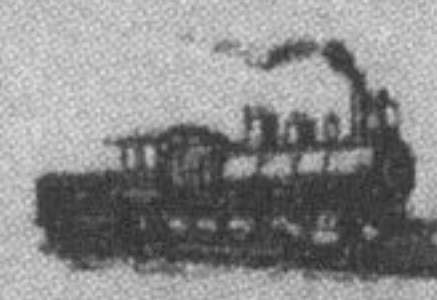
**Guarantee our Quality**  
A 110-point mechanical and detail inspection, results in vehicles of higher quality.



**We Guarantee our Value**  
We'll refund the difference if you find a comparable car (after factoring in quality, warranties and guarantees) for a lower price within 7 days.



**30-Day or 2500km Exchange Policy**  
If you don't like a vehicle that you've purchased, simply return it for another Gorruks' vehicle — no hassle whatsoever.



**Powertrain Warranty**  
A 6-month/10,000 km warranty included with the sale of every vehicle covering the engine and transmission.



**30-Day Mechanical Warranty**  
Covers 100% of necessary mechanical repairs from back bumper to hood ornament.

*Obviously, some conditions apply to all of the benefits listed above (unfortunately, some rotten apples have tried to take advantage of our generosity and good nature). We'll give you the full details when we see you.*

We're one of Southern Ontario's largest used car dealerships!

**GORRUD'S  
AUTO**

410 STEELES AVENUE, IN MILTON  
**905-875-2277**