

MANY OF OUR CUSTOMERS WAIT  
ALL YEAR FOR OUR ONE AND ONLY SALE.

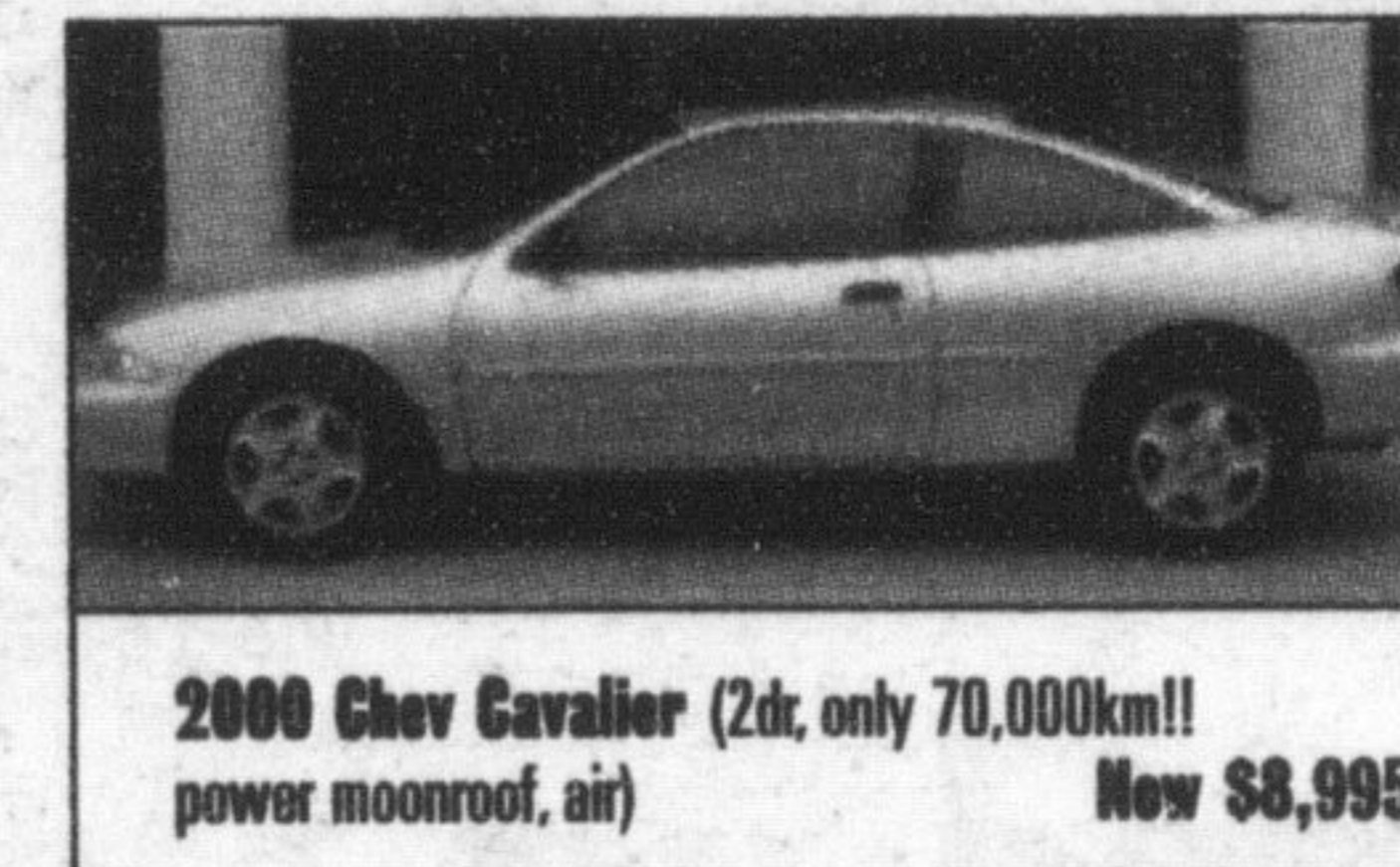
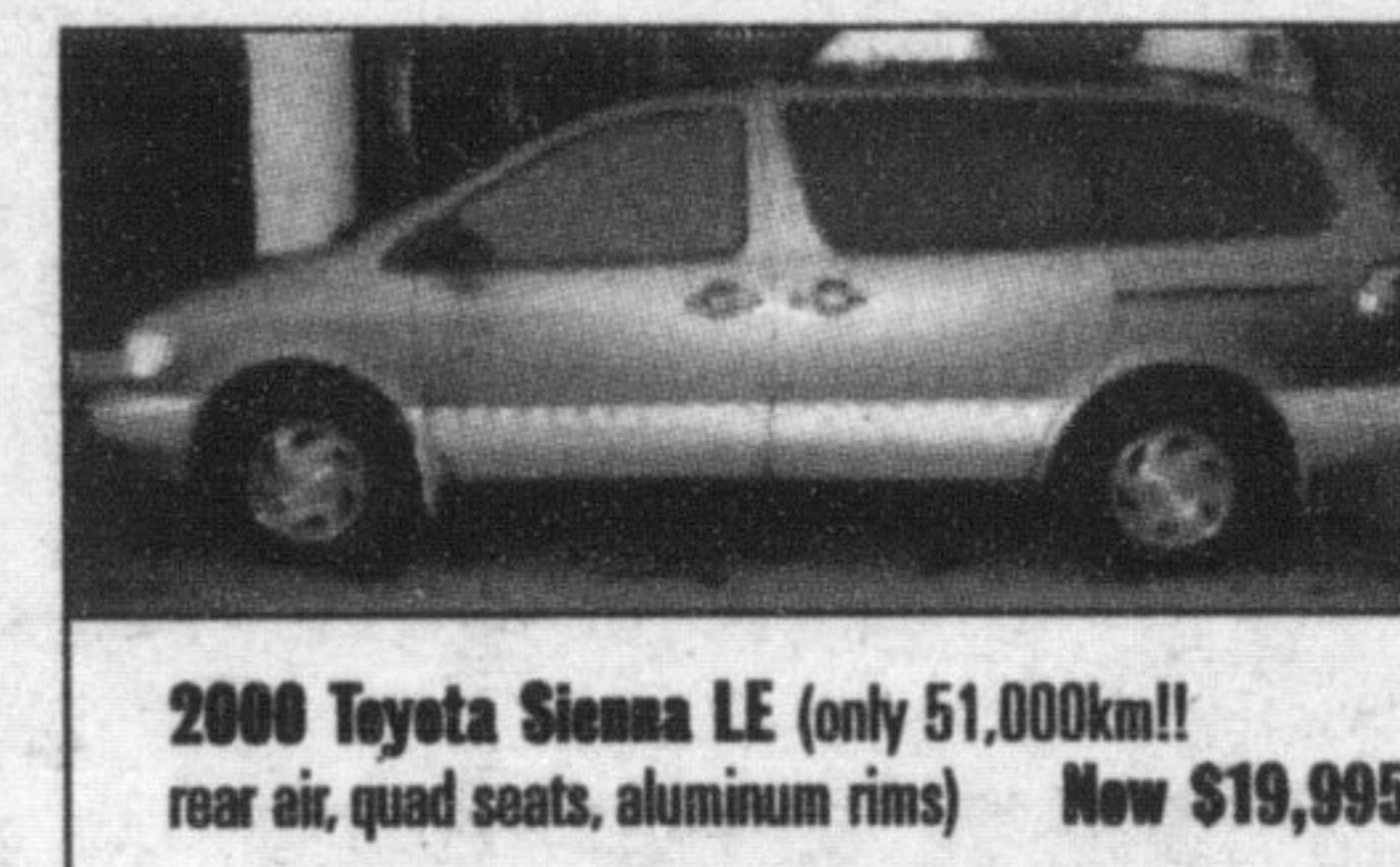
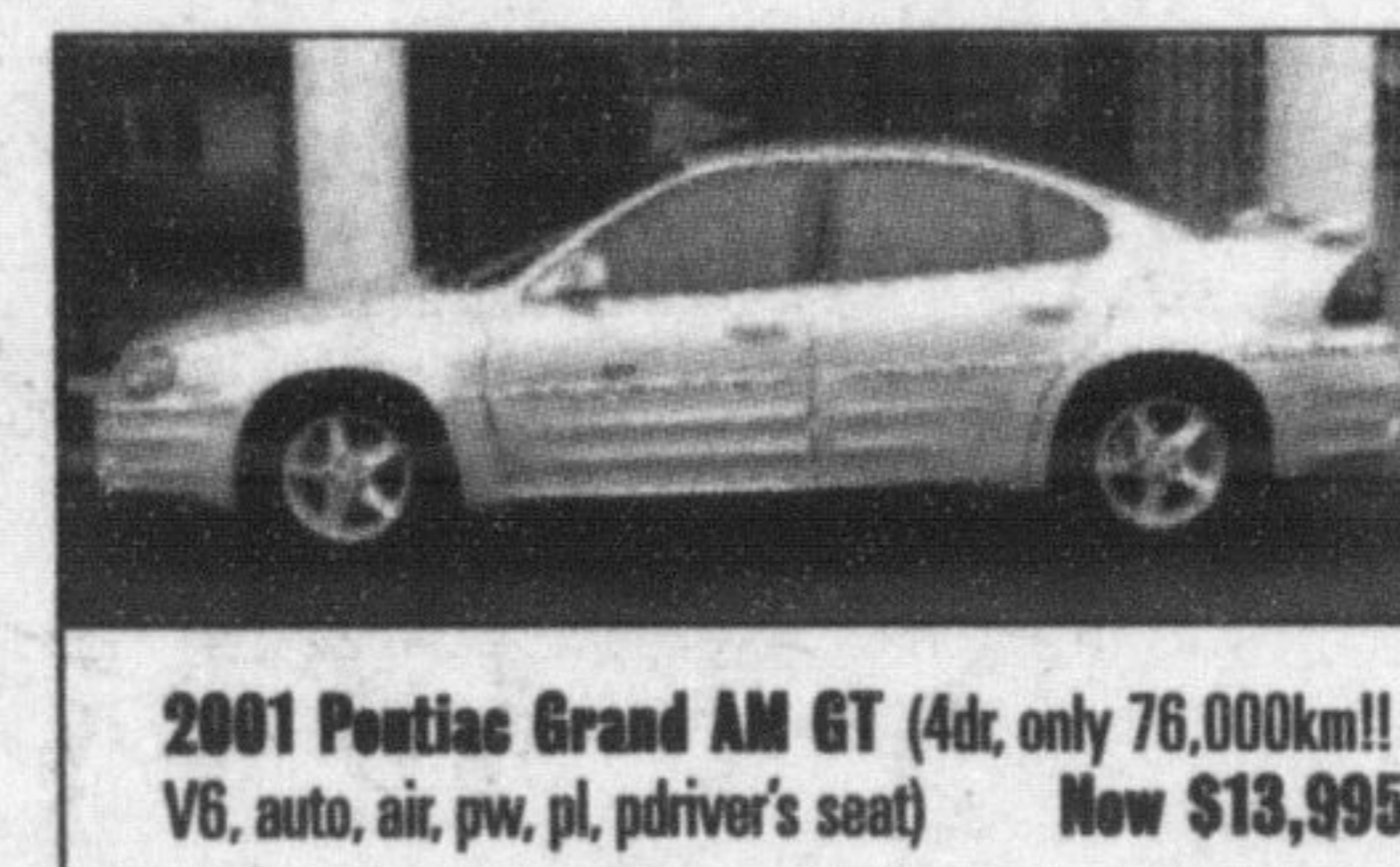
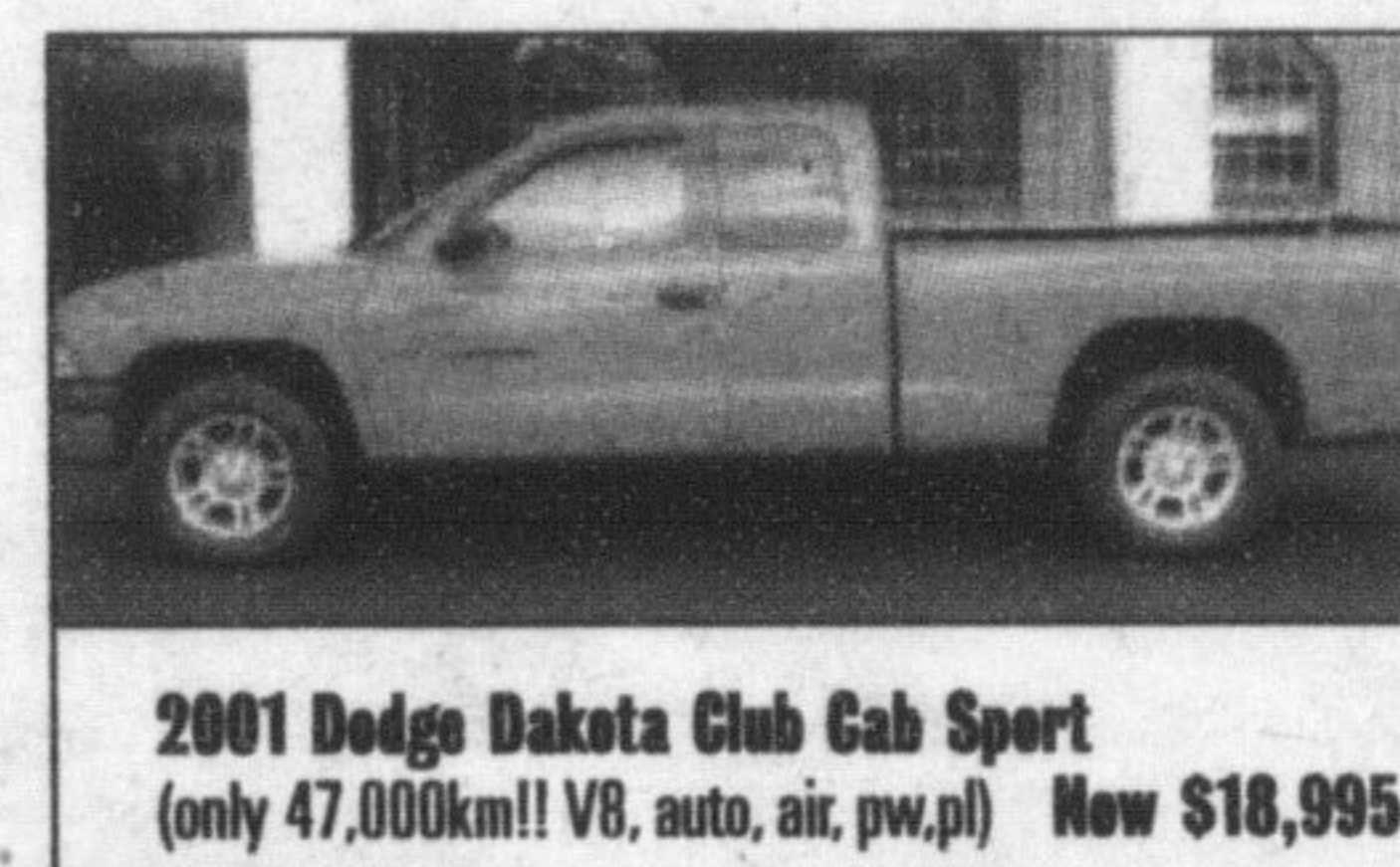
# OUR 20<sup>TH</sup> ANNUAL BIG SALE

IS ON RIGHT NOW.

Here's just a few of our fine motor vehicles.  
Can't find it here? Check out [www.gorruksautogroup.com](http://www.gorruksautogroup.com)

How many more cars do we have on our lot? A lot. In fact we have over 350 automobiles and trucks with more arriving each and every day.

2004 Toyota Sienna CE (only 30,332km!!)	Now \$27,995
2003 Chrysler Sebring LX (only 38,867km!!)	Now \$15,995
2003 Toyota Avalon XLS (only 58,099km!!)	Now \$33,995
2003 Toyota Corolla CE (only 40,005km!!)	Now \$15,995
2003 Toyota Highlander (only 15,985km!!)	Now \$29,995
2002 Ford Explorer Sport (only 75,502km!!)	Now \$19,995
2002 GMC Sierra SL X-Cab Stepside 4x4 (only 59,176km!!)	Now \$27,995
2002 Olds Alero GX (only 73,068km!!)	Now \$10,995
2002 Olds Alero GLS (only 44,677km!!)	Now \$17,995
2002 Pontiac Grand AM SE (only 78,658km!!)	Now \$12,695
2002 Pontiac Sunfire (only 46,690km!!)	Now \$10,995
2002 Pontiac Transport Montana (only 65,187km!!)	Now \$14,995
2002 Toyota Camry SE (only 86,088km!!)	Now \$22,995
2001 Chev Cavalier (only 49,315km!!)	Now \$9,995
2001 Chev Venture (only 62,396km!!)	Now \$12,995
2001 Chrysler 300M (only 65,747km!!)	Now \$18,995
2001 Dodge Grand Caravan (only 98,253km!!)	Now \$14,995
2001 Dodge Ram SLT 1500 (only 81,447km!!)	Now \$18,995
2001 Ford F150 XLT Extra Cab (only 88,682km!!)	Now \$19,995
2001 Ford Focus SE (only 57,798km!!)	Now \$10,995
2001 Ford Windstar SEL (only 59,796, leather, power sliding door)	Now \$18,995
2001 GMC Jimmy SLT (only 69,136km!!)	Now \$19,995
2001 Honda CR-V GT AWD (only 48,233km!!)	Now \$21,995
2001 Lincoln LS (only 7,452km!!)	Now \$27,995
2001 Nissan Altima GXE (only 43,129)	Now \$15,995
2001 Olds Aurora 4.0 (only 91,109km!!)	Now \$19,995
2001 Olds Silhouette GLS Extended (only 72,266km!!)	Now \$17,995
2001 Pontiac Grand Prix GT (only 72,950km!!)	Now \$15,995
2001 Saturn SC1 (only 70,767km!!)	Now \$9,995
2001 Volvo V70 Cross Country XC AWD (only 84,018km!!)	Now \$29,995
2000 Cadillac Deville (only 76,991km!!)	Now \$24,995
2000 Chev Malibu (only 64,529km!!)	Now \$9,995
2000 Chev Silverado Extended Cab (only 91,604km!!)	Now \$17,695
2000 Chev Suburban LS 4x4 (108,003km!!)	Now \$25,995
2000 Chrysler Neon LE (111,732km!!)	Now \$6,995
2000 Dodge Caravan (118,964km!!)	Now \$9,995
2000 Dodge Durango SLT 4x4 (only 88,586km!!)	Now \$19,995
2000 Ford Windstar SEL (only 88,436km!!)	Now \$12,995
2000 Nissan Frontier SE Crew Cab 4x4 (109,206km!!)	Now \$19,995
2000 Nissan Maxima SE (142,671km!!)	Now \$15,695
2000 Nissan Pathfinder XE (only 96,313km!!)	Now \$18,995
2000 Saturn SL1 (145,140 km!!)	Now \$5,995
2000 Toyota Corolla VE (100,019km!!)	Now \$11,495
2000 Toyota Echo (only 87,537km!!)	Now \$8,995
1999 Toyota 4Runner SR5 (102,468km!!)	Now \$20,995



## Council turns down request for traffic light

By JASON MISNER

The Champion

Traffic changes at Bishop Reding Secondary School don't include a desired traffic light and the school council chair says its safety concerns will only grow as a result.

"I don't know where we go from here," a frustrated Sheila Minkhorst told The Champion after Milton politicians approved at Monday night's council meeting initiatives they hope will make traffic flow around the busy school safer. "We're very, very disappointed."

For two years the school council and Bishop Reding staff have complained that heavy traffic and speeding drivers have made turning west onto Main Street East from the school's parking lot a nightmare.

An accident in October saw a pregnant driver T-boned while exiting the school's parking lot.

The school council's hope was to get a sensed traffic light at the school's west entrance to control the flow of hundreds of vehicles crowding the school in the morning and afternoon rush hour times, and to allow students to safely cross the street.

A traffic light at the west entrance makes sense because many of the school's 1,500 students walk to or from the urban core area, Ms Minkhorst said.

But there won't be a traffic light.

The Town said it would cost \$321,000 to install given a small portion of the Bishop Reding and the Milton Leisure Centre property next door would have to be reconstructed to match up with Robarts Drive across the street.

Instead, at a cost of \$5,000, next summer the Town will restrict westbound turns onto Main Street from the school's west entrance by installing a concrete island. Drivers can turn eastbound onto Main Street and they will also be permitted to turn into the school area via the west entrance.

Drivers can be fined by police if they disobey the turning bylaw.

Drivers will only be able to turn west onto Main Street via the east entrance of the school. Eastbound turns will also be allowed.

In addition, the Town has recommended a small roadway at the rear of the Bishop Reding parking lot be built to link it with nearby Harris Boulevard. Town staff say this would allow drivers to use the existing traffic lights at the corner of Harris Boulevard and Main Street to go westbound.

But because it falls on school property, it's up to the Halton Catholic District School Board to build and pay for the road, estimated at \$42,000, said Paul Cripps, the Town's engineering director.

It's not clear when, or if, that decision would be made.

In a 13-page report to council the Town's engineering services said small traffic counts and only one reported accident in the area in the last three years don't warrant a traffic light.

Also, not enough pedestrians were observed crossing Main Street to warrant a pedestrian crossing, expected to cost \$90,000.

The report noted speeding is a problem — the average speed is around 70 km/h and

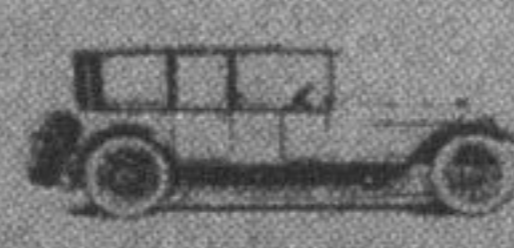
• see DESIGN on page 16



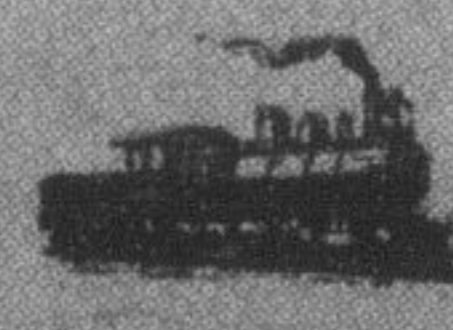
**Guarantee our Quality**  
A 110-point mechanical and detail inspection, results in vehicles of higher quality.



**We Guarantee our Value**  
We'll refund the difference if you find a comparable car (after factoring in quality, warranties and guarantees) for a lower price within 7 days.



**30-Day or 2500km Exchange Policy**  
If you don't like a vehicle that you've purchased, simply return it for another Gorrud's vehicle — no hassle whatsoever.



**Powertrain Warranty**  
A 6-month/10,000 km warranty included with the sale of every vehicle covering the engine and transmission.



**30-Day Mechanical Warranty**  
Covers 100% of necessary mechanical repairs from back bumper to hood ornament.

Obviously, some conditions apply to all of the benefits listed above (unfortunately, some rotten apples have tried to take advantage of our generosity and good nature). We'll give you the full details when we see you.

We're one of Southern Ontario's largest used car dealerships!

**GORRUD'S AUTO**

410 STEELES AVENUE, IN MILTON  
**905-875-2277**  
OPEN SUNDAYS 11:00 AM - 4:00 PM