



## Lighting up the holidays

Sisters Emma (left) and Samiee Singleton admire the Christmas display out front of their 8565 Guelph Line home. Now in its 10th year, the display includes — aside from the pictured holiday train — 26 window box displays and five inflated characters and uses more than 300 extension cords to illuminate everything. Below left, display creator Paul Singleton checks out the operation of two of the robotic lights. The Singleton family accepts donations from display visitors on behalf of Halton Women's Place.



Photos by GRAHAM PAINE

**DON'T CLEAN UP FOR THE HOLIDAYS.**

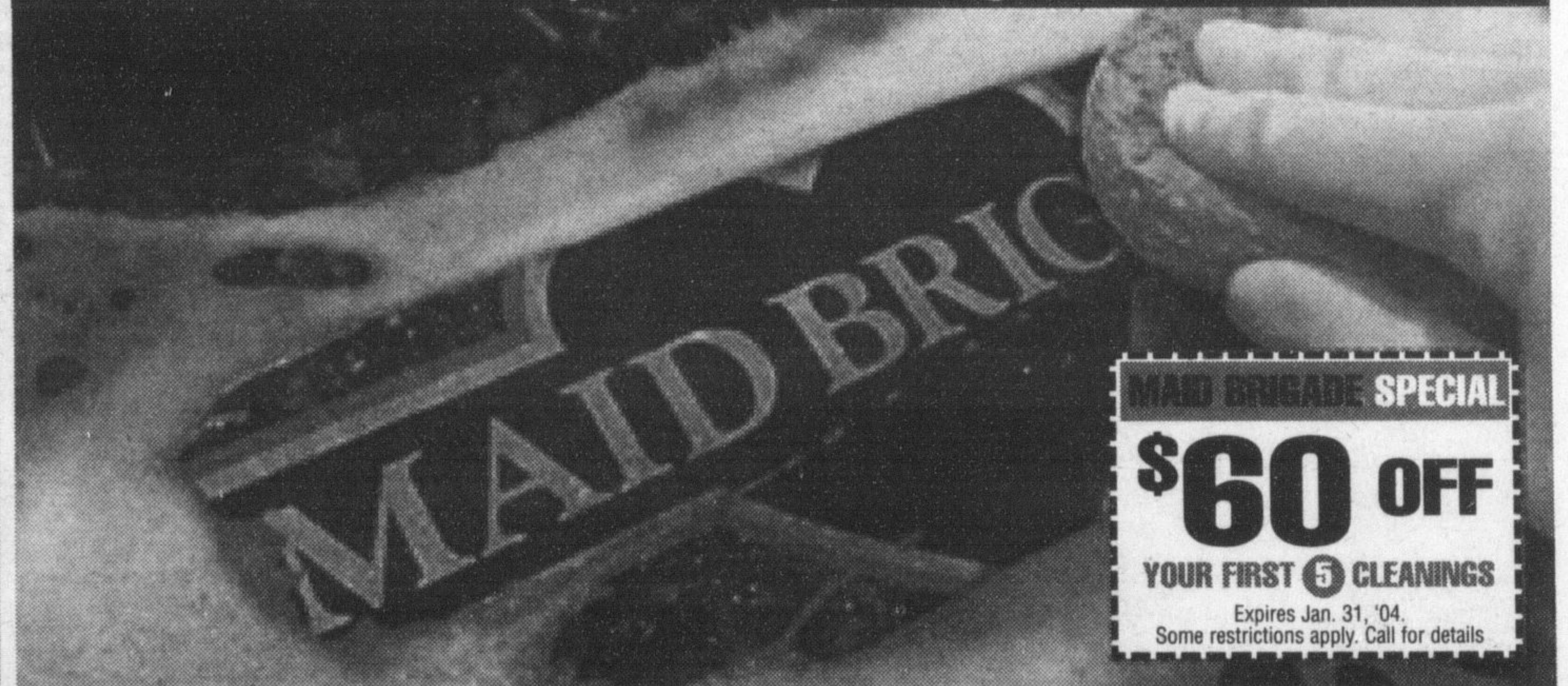
(let us do it instead)



866-327-5522  
416-575-MAID

Locally owned and operated.

Beneath the clean, you'll find sparkling customer service.



MAID BRIGADE SPECIAL

**\$60 OFF**

YOUR FIRST 5 CLEANINGS

Expires Jan. 31, '04.  
Some restrictions apply. Call for details.

# NISSAN

## Holiday Survival Tip #42

TRY SOMETHING NEW

**WE'LL MAKE YOUR FIRST TWO LEASE PAYMENTS\***

**THE 2004 SENTRA**

**\$189** per month lease for 60 months with **\$1,699** down or equivalent trade.\*\*

- or -

**\$222** per month lease for 60 months with **\$0** down

INCLUDES DESTINATION AND DELIVERY.

Financing as low as

**2.8%**\*\*

**0** security deposit

**NISSAN GRAD PROGRAM** Ask us about our new Nissan Graduate Program\*



- 126-HP 1.8-Litre DOHC Engine • 15" Wheels
- Full Wheel Covers • 8-Way Driver's Seat • Air Conditioning • Dual Remote Outside Mirrors
- Remote Trunk and Fuel Lid Release • 60/40 Split Folding Rear Bench Seat • Front Disc Brakes
- Rack and Pinion Power Steering • 100-Watt CD with AM/FM Audio System • Centre Console Armrest • Child-Proof Rear Door Locks • Front Door Map Pockets
- Rear Window Defroster • Low Washer Fluid and Fuel Warning Light • And Much More...

**WE'LL ALSO MAKE A LEASE PAYMENT\*\***

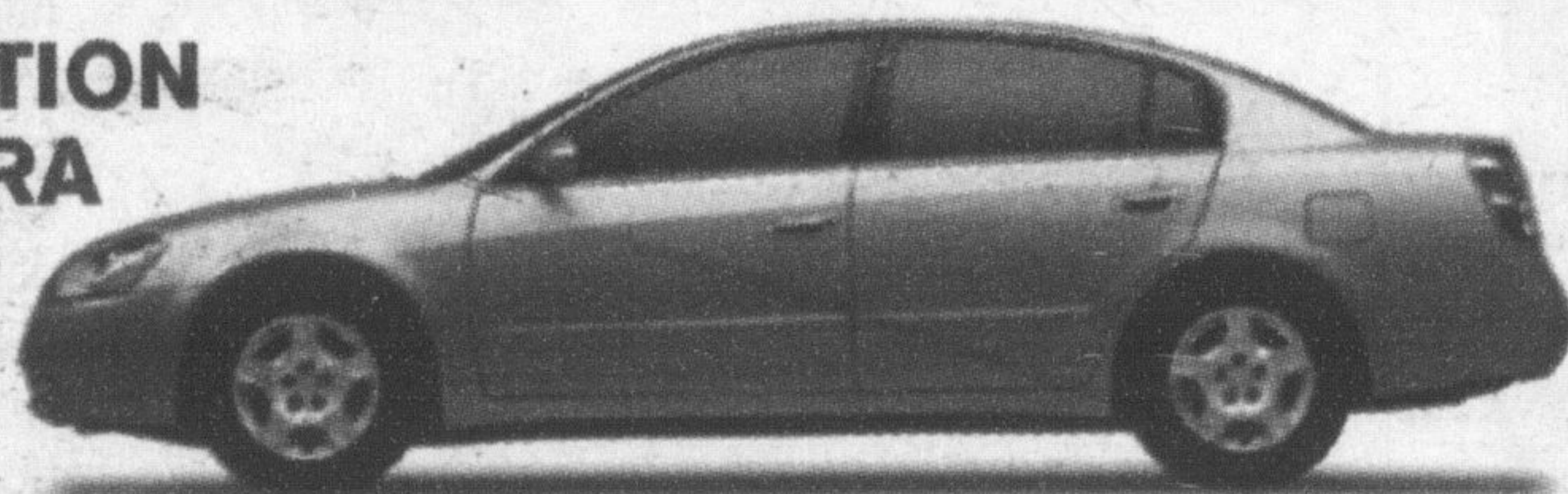
On 2004 Pathfinder, Xterra, Frontier and 2003 Altima, Xterra and Frontier

**2004 LIMITED EDITION ALTIMA 2.5 S EXTRA**

2004 NISSAN ALTIMA

**\$1,000**

IN NO-CHARGE OPTIONS\*\*



**\$289** per month lease for 48 months with **\$3,950** down or equivalent trade:

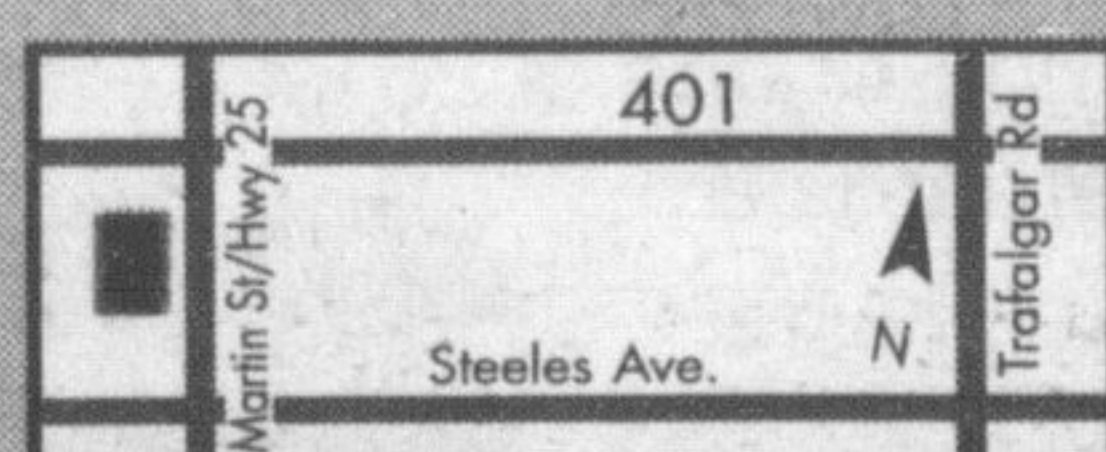
- or - **\$389** per month lease for 48 months with **\$0** down

INCLUDES DESTINATION AND DELIVERY.

Altima 2.5 S EXTRA adds \$1,000\*\* in No-Charge Options: • 16" Alloy Wheels • 8-Way Power Driver's Seat • Dual Illuminated Vanity Mirrors • Steering Wheel-Mounted Audio Controls • Speed-Sensitive Volume Control • Trip Computer & Outside Temperature Gauge • Anti-Theft System • And More... Altima 2.5 S comes equipped with these standard options: • 175-HP 2.5-Litre DOHC Engine (V6 available) • Auto On/Off Headlights •

Automatic Transmission • Variable Intermittent Wipers • Remote Fuel Lid Release • Cruise Control • Air Conditioning • Power Heated Outside Mirrors • Power Door Locks • Power Windows with Driver's Side Auto Up/Down • Remote Keyless Entry System • 100-Watt CD with AM/FM Audio System (w/6-speakers) • Engine Immobilizer Key System • And Much More...

Milton's  
**NORTH END NISSAN** LTD.



**610 MARTIN STREET, MILTON**  
**905-878-4137**

SALES DEPT. HOURS: Mon.-Thurs. 9:00 - 9:00  
Fri. 9:00 - 6:00  
Sat. 9:00 - 5:00



SHIFT

www.nissan.ca

All offers are only on accepted credit, available for a limited time, and may change without notice on new 2004 Altima S Extra (T4YG74 AE00) and Sentra 1.8 VOP (CALG54 BK00). Offers cannot be combined with any other offers and exclude destination and delivery. \*\*48-month lease on all 2004 Altima S Extra 6.7% A.R. Leases based on a maximum of 95,000 km with excess charged at \$0.10/km. 60-month lease on all 2004 Sentra 1.8 2.6% A.R. Lease based on a maximum of 120,000 km with excess charged at \$0.10/km. †First payment due 60 days after lease signing on all new and demo 2004 Sentra models. Not available on pre-paid leases. ††First payment due 30 days after lease signing on all new and demo 2004 Pathfinder, Xterra, Frontier and 2003 Altima, Xterra and Frontier models. Not available on pre-paid leases. †††Nissan Graduate Program available on 2004 Sentra models only. See dealer for details. Dealer may refer to lease. Not all vehicles/offers are available at all Dealerships. Licence, insurance, and taxes are extra and must be paid at the time of transaction. \*\*\$1,000 in extra value reflects price difference between 2.5 S Convenience model versus 2.5 S Extra model-112.9% purchase financing available for 60 months on 2004 Sentra. Financing example: \$30,000 at 2.9% per annum for 30 months equals \$869.79 per month. COB is \$1,312.60 for an obligation total of \$31,312.60. Vehicles not exactly as shown and used for illustration purposes only. Nissan, the Nissan Brand Symbol, "SHIFT" logo and the Nissan model names are Nissan trademarks. See your Nissan Dealership or www.nissan.ca for more information.