

Bite me.

With confidence!

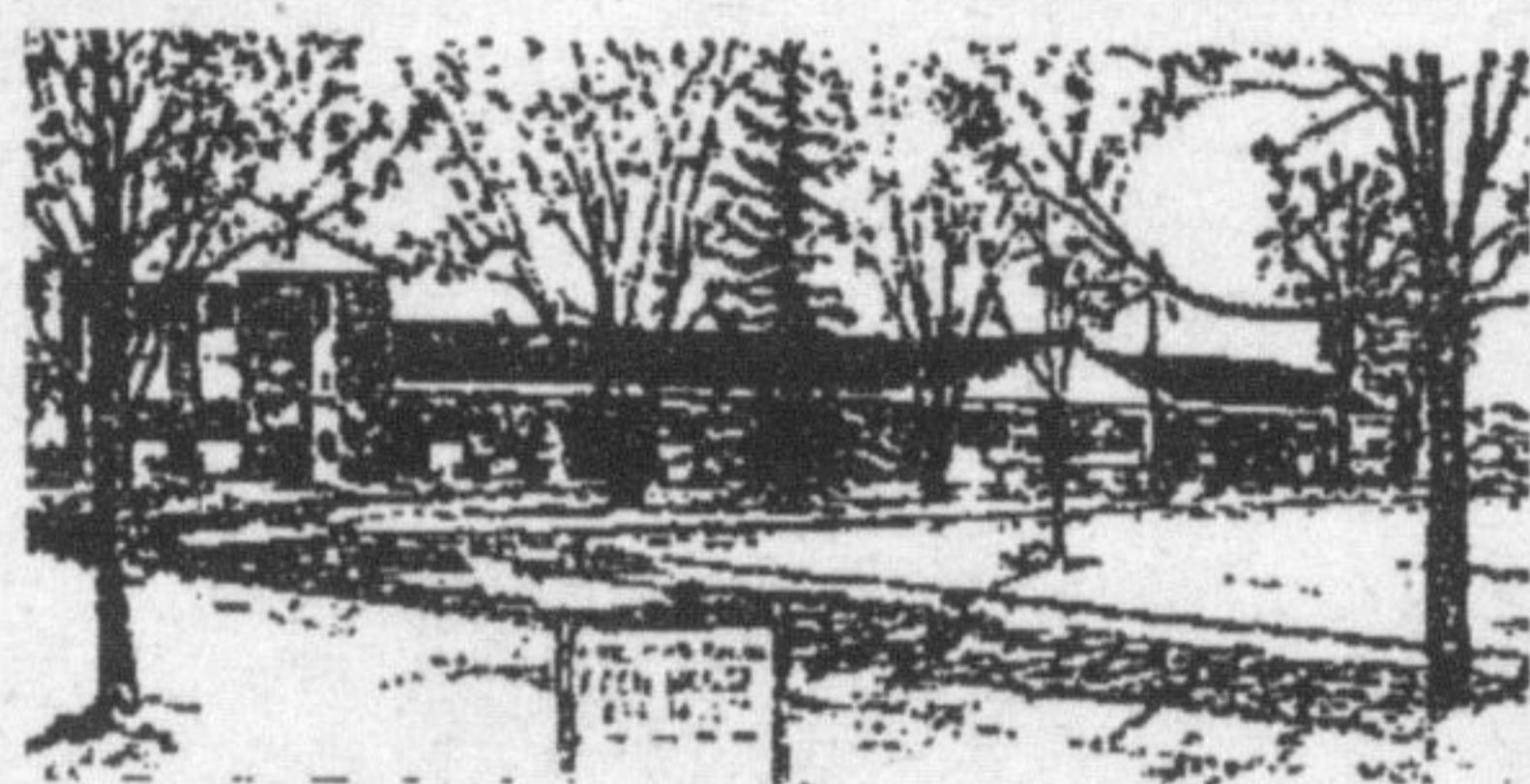
MILTON DENTURE CLINIC

COMPLETE DENTURE SERVICE!

- Laboratory in Rear - Repairs 1 hour
- Same Day Relines
 - Complete Dentures
 - Partial Dentures
 - Implant Dentures
 - Rebasings
 - Immediate Dentures
 - Soft Rubber Liners
 - Temporary Relines
 - Repairs
 - Relines
 - Lost Dentures
 - Made in 24 Hours
 - Custom Gold Work

FREE CONSULTATION
THE DENTURE SPECIALIST

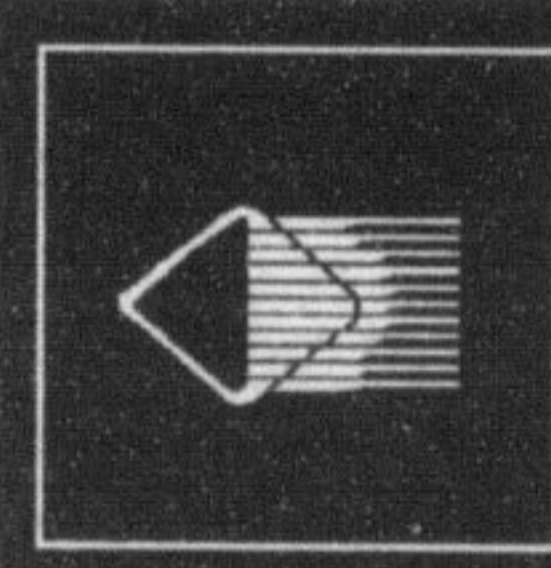
GARRY T. TRENTON,
DENTURIST
159 MAIN ST.
MILTON
905-876-2000



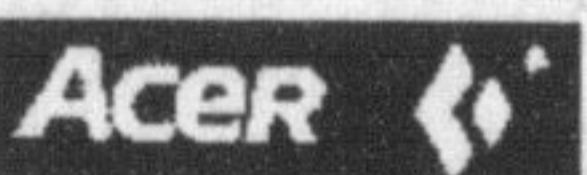
EDEN HOUSE CARE FACILITY INC.

One storey building located on beautiful spacious grounds situated between Rockwood and Eden Mills

NURSING HOME • RETIREMENT HOME
519-856-4622
SERVING HALTON AND AREA SINCE 1968



Miltown Computer Services



- Sales & Service
- Software & Accessories
- Authorized Service Depot
- Network Installations
- On-Site Corporate Service

TOSHIBA



751 Main St. East, Suite 2, Milton
905-878-4651 1-800-268-0034

Fax: 905-876-1013
Store Hours: Monday - Friday 9-5:30pm,
Saturday 10-2pm
www.miltown.com



276 Main St. (905) 878-4171

We do chicken right.

News for SENIORS

Milton Seniors' Activity Centre
500 Childs Drive, Milton • 905-875-1681



DECEMBER ACTIVITIES

Christmas in Waltztime - Song Spinners Concert
Enjoy the beautiful music of the season, favourite waltz melodies, a not-so-serious offering from the Men's Chorus, and more at the annual Christmas Concert on **Friday, December 5th at 7:30 p.m.** Tickets cost \$7.

Annual Christmas Social
Enjoy a delicious turkey dinner, great entertainment, a visit from "St. Nick", and more, on **Thursday, December 11th at noon.** Tickets cost \$15 - This event is always a "sell-out" so don't delay!

Celebrate New Year's Eve at the Centre
Join friends for cards, games, a sing-along and light refreshments, and watch the New Year roll in on our big screen TV at midnight.
Doors open at 7:30 p.m. — games begin at 8 p.m.
Tickets cost \$8.

Happy New Year

DO YOU ENJOY... CONTRACT BRIDGE?
The Centre offers this fun program
WEDNESDAY MORNINGS AT 9:30 A.M.
THURSDAY AFTERNOONS AT 1:30 P.M.
& FRIDAY MORNINGS AT 10:00 A.M.
Cost is only \$1.50 for members, or \$2 for non-members.

"CAMPBELLVILLE EVENING EUCBRE PARTIES" at the Lions Hall in Campbellville will be held **Friday, December 12.**
Come along... bring friends!
The competition is keen and the conversation refreshing.
PRIZES AWARDED. COST: \$2.00 PER PERSON
The Centre holds its **"EVENING EUCBRE PARTIES"** on Tuesday, December 2 and 16 and Wednesday, December 10 starting at 7:30 p.m.

Seniors' Cinemas
September Performances
All performances begin at 1:30 p.m.
Cost is \$1 - Refreshments served

- Thursday, December 11 Daddy Daycare (Comedy)
- Thursday, December 18 The Grinch (Family)

• Thank you to Rogers Video for its generous support of the Centre's Seniors Cinemas.

Merry Christmas to All!
Another exciting year at the Seniors' Centre is drawing to a close, and we can look back on a year that was full of fun, camaraderie, and superb food and entertainment. Thank you to the many members, local businesses, and community groups who contributed so much to our success in 2003. We wish you all great happiness at Christmas and all year long, and comfort in the fond memories of those who are not with us this Christmas.

Programs Include: Badminton, Basic Rescuer CPR, Bridge, Learn to Play Additional Activities Include: Wednesday "Lunch Counter", Library, Bus Bridge, Euchre, Bid Euchre, Cribbage, Bingo, Snooker, Darts, Shuffleboard, Tours, Lunch Bunch, Diners Club, Kitchen Band, Computer Club, Folk Art for T'ai Chi, Qi-Gong, Light Exercises, Seniors Pilates, Yoga, Line Dancing, Intermediates Club, Soft Wood Carving Club, "Song Spinners" Chorus, Clogging, Painting Classes, Tap Dancing, Memoirs, and Seniors' Cinemas. "Creative Fingers" Craft Club, plus Special Events and Fundraisers.

THE ABOVE INFORMATION IS SUBJECT TO CHANGE AND LIMITATION.
FOR FURTHER DETAILS ON ACTIVITIES CALL 905-875-1681

ROBERT (PIE) LEE INSURANCE AGENCY
Life - Disability - Annuities - RRIFs - LIFs - RRSPs - Mutual Funds (M.S.I.L.) - RESP's
Celebrating 28 years of "Home Town" Business
Bob Lee
bob@robertleeinsurance.com
Kim Mitchell
kim@robertleeinsurance.com
245 COMMERCIAL ST., MILTON L9T 2J3
OFFICE 905-878-5786 FAX: 905-878-3692

MILTON OPTICAL
15 Martin St. Milton
Carriage Square
876-0556

COMPLETE PACKAGE
LAB ON PREMISES \$149
INCLUDES:
✓ FRAME
✓ SINGLE VISION LENSES
✓ SCRATCH COAT
✓ 1 YEAR FRAME WARRANTY

• EYE EXAMINATIONS ARRANGED (next door)
• FAST EFFICIENT SERVICE

ZAK'S PHARMACY
Milton's Independent Pharmacy
14 YEARS SERVING MILTON

- Free Delivery
- 10% Seniors Discount
- All Drug Plans Accepted
- Written Drug Information Available

"At Zak's We Care About Your Health"
70 Main St. E. **875-2424**

HERITAGE HOUSE
Comfortable Retirement Living

- Long & Short Term Accommodations
- 24 Hour Nursing Assistance Available
- All Services and Amenities Provided

Call or stop by for tea and a tour, we'd love to show you around.
(519) 822-2006 2113 Gordon Street, Guelph