

# Dateline

## Saturday Nov. 15

**Hornby Euchre** is held at 7:30 p.m. at the Hornby community hall on Steeles Avenue.

Milton Mall hosts its annual **Community Bazaar** from 9:30 a.m. to 5:30 p.m. featuring homemade gift items, crafts and Christmas decor.

The Adventists hosts the **Cure for the Last Days** with pastor Herbert Nunes at 7:15 p.m. in the Community Room at John Tonelli Sports Centre, 217 Laurier Ave., west of Ontario Street. The topic is 'Signs of Your Allegiance to God'. For more information, call (519) 822-7676 or (519) 835-8301.

The Women's Centre holds its **NLP Workshop** from 12:30 to 4 p.m. Neuro-Linjustic Programming is the understanding of how we use our senses to create our subjective

experiences and to use techniques to change our patterns. The cost is \$20. To register or for more information, call (905) 847-5520.

## Sunday Nov. 16

The Adventists hosts the **Cure for the Last Days** with pastor Herbert Nunes at 7:15 p.m. in the Community Room at John Tonelli Sports Centre, 217 Laurier Ave., west of Ontario Street. The topic is 'Following in Jesus' Footsteps'. For more information, call (519) 822-7676 or (519) 835-8301.

## Monday Nov. 17

The **Milton and District Horticultural Society** holds an awards night and pot luck supper at the Royal Canadian Legion on Charles Street at 7:30 p.m. For more information, visit [www.halinet.on.ca/miltonhort/](http://www.halinet.on.ca/miltonhort/).

The **Halton Multicultural Council** holds its annual general meeting and elections at 7 p.m. at 1151 Bronte Rd. in the regional building cafeteria. All are welcome to attend and participate in the meeting and election of the board of directors. For more information, call Helen or Sophia at (905) 842-2486 or e-mail [imatthews@halton-multicultural.org](mailto:imatthews@halton-multicultural.org).

Halton Regional Police host a **seminar** entitled 'When You Think or You Know Your Adolescent is Using Drugs/Alcohol' with Jim Harkins. It takes place from 7 to 9 p.m. at the Milton police station's Community Room, 490 Childs Dr.

## Tuesday Nov. 18

Improve communication and leadership skills with the **Milton Toastmasters**. Everyone is welcome to attend the meeting at the Royal

Canadian Legion, 21 Charles St. (upper level), at 7:30 p.m. For information, call Allan Lahue at (905) 877-3441.

The Art of Healthy Living holds a **parent support group** for parents of children who are dependent on drugs or alcohol. The group meets at 72-74 Mill St. in Georgetown from 7:30 to 9 p.m. For more information, call (905) 702-7304.

**Help for Parents**, a parent support group, meets in Burlington. This non-denominational self-support group helps parents of children who are in trouble at home, at school or with the law or who are abusive or taking drugs. The group is a member of Association of Parent Support Groups in Ontario. For times and directions, call 1-800-488-5666 or visit [www.apsgo.ca](http://www.apsgo.ca).

**Calling New Parents**, a free program for parents and babies aged 6 months and younger, **see more DATELINE on page 18**

# TOP 10 REASONS TO GET INTO A NISSAN

- 10 STRIKING DESIGN 9 PROVEN QUALITY 8 FUN TO DRIVE 7 AWARD-WINNERS 6 GREAT SELECTION  
5 SUPERIOR SAFETY 4 LEADING TECHNOLOGY 3 POWER 2 THRILLING PERFORMANCE

## 1 GREAT VALUE



**FIRST LEASE PAYMENT ON US!**

INTRODUCING THE **NEW 2004 PATHFINDER LIMITED EDITION "CHINOOK"**

ONLY AVAILABLE IN CANADA

**\$392** per month lease for 48 months with \$5,150 down or equivalent trade. INCLUDES DESTINATION AND DELIVERY.

\*Award-Winning 240-HP 3.5-Litre DOHC V6 Engine • 4-Speed Automatic with Overdrive • "All-Mode" 4-Wheel Drive • Power Sliding Glass Sunroof (Auto Open/Close) • "All Terrain" 4-Wheel Anti-Lock Braking • 16" Alloy Wheels • 5,000 lb Towing Capacity • Fender Flares • Bose® Audio System with 6-Disc In-Dash CD Changer • 8-Way Adjustable Driver's Seat • Keyless Remote Entry System with Panic Alarm on Key Fob • Anti-Theft and Immobilizer Key System • "Chinook" Badging, Detailing and Numbered Plaque • Air Conditioning • Electronic Compass & Outside Temperature Display • Remote Rear Liftgate Glass Release • And Much More...

INTRODUCING THE **NEW 2004 QUEST \$377**



per month lease for 48 months with \$4,949 down or equivalent trade. INCLUDES DESTINATION AND DELIVERY.

\*Award-Winning 240-HP 3.5-Litre DOHC V6 Engine • 7-Passenger Seating • Longest Wheelbase and Widest-Opening Dual Sliding Doors in its Class • 4-Speed Automatic Transmission • 4-Wheel ABS • Solar Tinted Glass • 8-Way Driver's Seat • Groundbreaking Fold\_Away™ 2nd and 3rd Row Bench Seats • 10 Cup Holders • Side Curtain Airbags (all-rows) • 150-Watt CD with AM/FM Audio System • Plenty of Storage and Bag Hooks • Traction Control System • Heated Front Seats • Tire Pressure Monitor System • Trip Computer • Available DVD and Navigation System • Available SkyView™ Roof • And So Much More...



THE NEW 2004 SENTRA

Financing as low as 2.8%

**\$198** per month lease for 48 months with \$1,599 down or equivalent trade. INCLUDES DESTINATION AND DELIVERY.

Low 2.1% lease rate

○ security deposit

**First & Second Lease Payment On Us<sup>††</sup>**

CHOOSE YOUR LEASE PAYMENT

\$0 Down	\$233/mth.
\$500 Down	\$222/mth.
\$1,000 Down	\$211/mth.

\*126-HP 1.8-Litre DOHC Engine • 16" Wheels • Full Wheel Covers • 8-Way Driver's Seat • Air Conditioning • Dual Remote Outside Mirrors • Remote Truck and Fuel Lid Release • 60/40 Split Folding Rear Bench Seat • Front Disc Brakes • Rack and Pinion Power Steering • 100-Watt CD with AM/FM Audio System • Centre Console Armrest • Child-Proof Rear Door Locks • Front Door Map Pockets • Rear Window Defroster • Low Washer Fluid and Fuel Warning Light • And Much More...

2004 NISSAN ALTIMA 2.5S EXTRA  
**\$1,000**  
IN NO-CHARGE OPTIONS

2004 LIMITED EDITION ALTIMA 2.5 S EXTRA



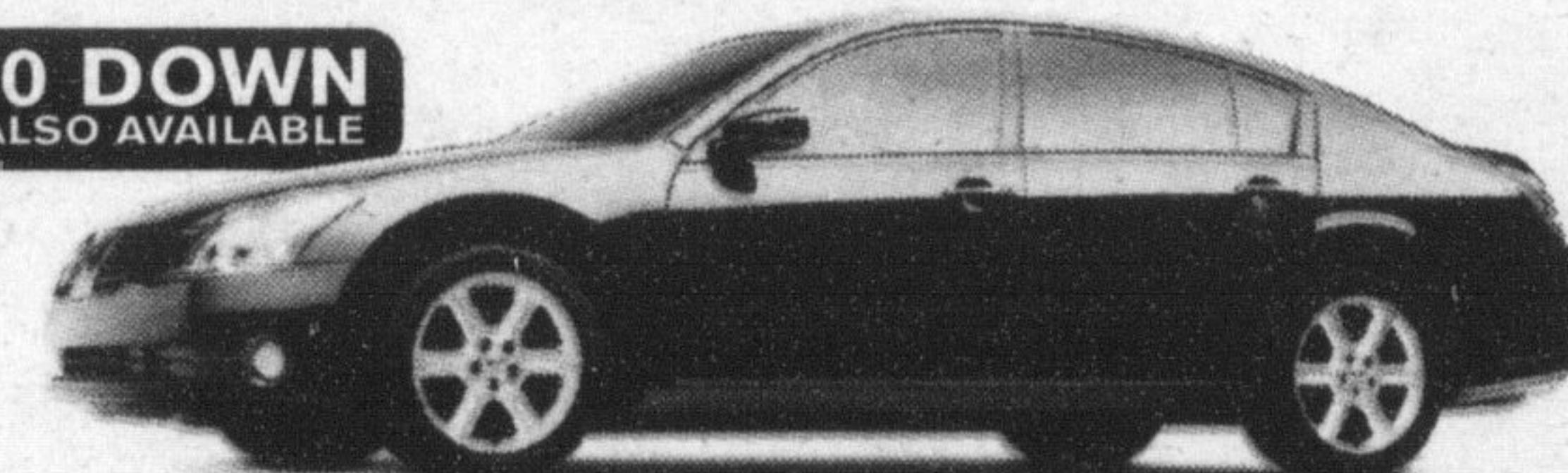
\*\$0 DOWN ALSO AVAILABLE

**\$289** per month lease for 48 months with \$3,950 down or equivalent trade. INCLUDES DESTINATION AND DELIVERY. M.S.R.P. \$25,298

Altima 2.5 S EXTRA adds \$1,000 in No-Charge Options: • 16" Alloy Wheels • 8-Way Power Driver's Seat • Dual Illuminated Vanity Mirrors • Steering-Wheel-Mounted Audio Controls • Speed-Sensitive Volume Control • Trip Computer & Outside Temperature Gauge • Anti-Theft System • And More...

Altima 2.5 S comes equipped with these standard options: • 175-HP 2.5-Litre DOHC Engine (V6 available) • Auto On/Off Headlights • Automatic Transmission • Variable Intermittent Wipers • Remote Fuel Lid Release • Cruise Control • Air Conditioning • Power Heated Outside Mirrors • Power Door Locks • Power Windows with Driver's Side Auto Up/Down • Remote Keyless Entry System • 100-Watt CD with AM/FM Audio System (w/6-speakers) • Engine Immobilizer Key System • And Much More...

\*\$0 DOWN ALSO AVAILABLE



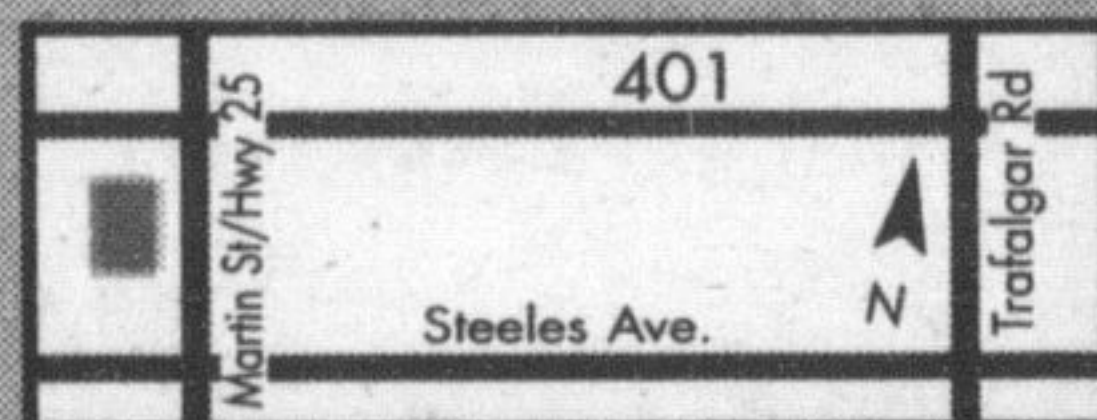
THE NEW 2004 MAXIMA

**\$449** per month lease for 48 months with \$3,800 down or equivalent trade. INCLUDES DESTINATION AND DELIVERY.

\*Award-Winning 265-HP 3.5-Litre DOHC V6 Engine • 18" Alloy Wheels • 4-Wheel Power Disc Brakes • ABS • Heated Front Seats • Fog Lights • SkyView™ Roof • 8-Way Power Driver's Seat • Auto Dimming Rear View Mirror • 60/40 Split Folding Rear Seats • Bose® Audio System with 6-Disc In-Dash CD Changer (320-Watt with 8 Speakers) • Dual Zone Automatic Climate Control • Front and Curtain Side-Impact Airbags • Power Windows, Locks and Heated Mirrors • Steering-Wheel-Mounted Audio Controls with Speed-Sensitive Volume Control • 6.3" LCD Monitor • And Much More...

2003 MODELS ARE GOING QUICKLY - HURRY IN FOR TERRIFIC DEALS!

Milton's **NORTH END NISSAN LTD.**



610 MARTIN STREET, MILTON  
**905-878-4137**

SALES DEPT. HOURS: Mon.-Thurs. 9:00 - 9:00  
Fri. 9:00 - 6:00  
Sat. 9:00 - 5:00



SHIFT  
[www.nissan.ca](http://www.nissan.ca)

All offers are only on accepted credit, available for a limited time, and may change without notice on new 2004 Altima S Extra (T4VG74 AE00), Sentra 1.8 VOP (C4LG54 BK00), Pathfinder "Chinook" (5CRG74 AE00), Quest 3.5 S (V6RG74 AA00) and Maxima SE (U4SG54 AA00). Offers cannot be combined with any other offers and include destination and delivery. \*48-month lease on all 2004 Altima S Extra/Sentra 1.8/Pathfinder "Chinook"/Quest 3.5 S/Maxima SE 6.7/2.1/4.9/8.5/8.5% ALR. Leases based on a maximum of 98,000 km with excess charged at \$0.10/km. Zero security deposit, OAC, on 2004 Sentra leases. Dealer may sell/lease for less. Not all vehicles are available at all Dealerships. Licence, insurance, and taxes are extra and must be paid at the time of transaction. \*\*\$1,000 in extra value reflects price difference between 2.5 S Convenience model versus 2.5 S Extra model. †2.8% purchase financing available for 36 months on 2004 Sentra. Financing examples: \$30,000 at 2.8% per annum for 36 months equals \$869.79 per month. COB is \$1,312.60 for an obligation total of \$31,312.60. †MSRP for model shown \$49,100 (2004 Quest 3.5 SE (V6SG74 FN00)). †Based on comparison of 2004 Nissan Quest with 2003 FWD minivans. Vehicles not exactly as shown and used for illustration purposes only. Nissan, the Nissan Brand Symbol, "SHIFT" tagline and the Nissan model names are Nissan trademarks. See your Nissan Dealership or [www.nissan.ca](http://www.nissan.ca) for more information.

## USED VEHICLES

### 1995 NISSAN QUEST

Fully equipped, mint condition, only 142,000 km

Sale Price: **\$7,995**



### 1997 FORD ESCORT SPORT

\*Auto • Air • One owner only 138,000 km

Sale Price: **\$5,995**



### 1999 PONTIAC GRAND AM SE

\*V6 • Auto • Loaded • Only 93,000km

Sale Price: **\$9,995**



### 1999 NISSAN PATHFINDER CHILKOOT

\*Auto • 4x4 • Loaded only 82,000 km

Sale Price: **\$18,495**



ALL USED CARS INCLUDE WARRANTY