



# ALLENDALE Foundation Community News

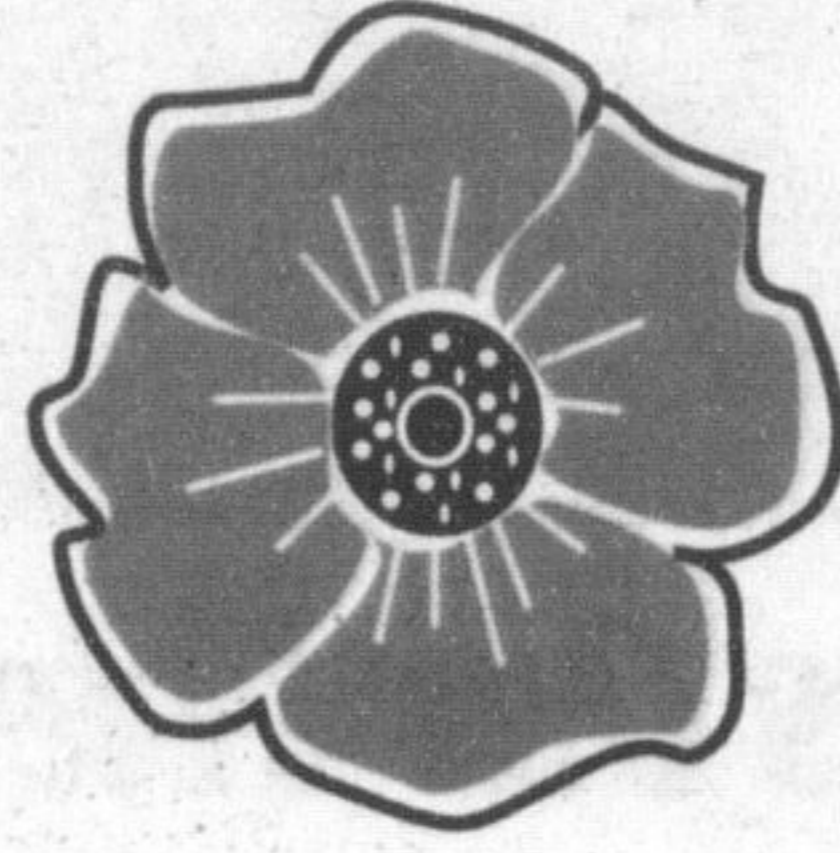
THE ALLENDALE FOUNDATION: 185 Ontario St. S. Milton L9T 2M4. Tel: 905-878-4141 ext. 8505 • Fax: 905-878-8797

*A charitable non-profit organization governed by a voluntary Board of Directors. Established in 2000, the Foundation supports Allendale by raising funds to enhance the quality of life and to meet the special needs of its residents as well as seniors and disabled adults living within the Region of Halton community.*

## Donors make a difference – THANK YOU!

Thank You to Milton's Royal Canadian Legion PTE U.J. (Joe) Waters No. 136 Branch for contributing \$1600 toward The Allendale Foundation's Mattress Project. These funds were used to purchase a special 4V pressure relief mattress with ROHO insert.

To date, the Foundation has funded the purchase of six of these mattresses to improve resident comfort, especially if they are at risk of skin breakdown. Ideally, Allendale could make use of up to 25 mattresses, so fund raising efforts are continuing.



Support the  
*Royal Canadian Legion  
PTE U.J. (Joe) Waters  
(Ont. No. 136) Branch's  
Annual Poppy Campaign*

If you know of a company or community group that might be interested in contributing to the Mattress Project fund, please let us know.

## Dare Foods of Milton invites local businesses or groups to help them bring "Christmas" to Allendale

Dare Foods of Milton is helping to bring "Christmas" to the residents of Allendale and invites other local businesses and groups to join in. Please consider helping to brighten the season for those who are in residence at Allendale by:

- donating decorations
  - donating funds to purchase decorations
  - volunteering your time and/or staff time to decorate
- Decorating takes place the first week of December.

Last year, Dare and a group of volunteer helpers decorated Martin House and some of the

common areas at Allendale. Their dream this year is to decorate all the resident and common areas, replacing trees and decorations that are damaged or worn out.

At least six new Christmas trees are needed for the resident areas along with decorations and large wreaths or boughs for the common areas. For safety reasons, the use of real trees, tinsel or glass or breakable decorations are not permitted. (Due to use of wheelchairs and walkers use the same rule of thumb as for child proofing).

If you wish to join the Dare team in helping to brighten the holidays for our seniors this year, please contact Linda Innes at Dare (905-875-1223 ex. 315) or The Allendale Foundation Office: 905-878-4141 ext. 8505.



## Foundation collecting pop-can tabs in support of ErinOak

The Allendale Foundation Office is collecting pop can tabs in support of the Harley (Davidson) Owners Group, Milton Chapter. This group collects pop can tabs to help fund the purchase of a wheelchair for ErinOak in Mississauga. ErinOak serves more than 6,000 children and young people with physical disabilities.

A deposit container for tabs is now located in the Foundation Office (Room 160) along with a supply of medium size zip lock bags to store tabs in. When your bag (must be at least medium size zip lock bag) is full, bring it to the Foundation Office and you will receive a "surprise treat" as a token of our appreciation.



*Student volunteer Stephen Anderson recently helped to fill our container with donated tabs – it's almost a third of the way to the top*

So start saving your pop can tabs today – we only need a few million or so to buy a new wheelchair! For more info contact 905-878-4141, ext. 8505.



## Looking for a special card to send to friends and family this Christmas?

The Allendale Foundation is selling Christmas cards again this year in support of various charitable projects, which will enhance the quality of elderly and disabled adults who live at Allendale or within the community.

This year there are four illustrations to choose from – Choristers, Mom & Babe, Forest and Poinsettia Flowers – created by Allendale resident Marie Clements. Marie completed these pictures with

her opposite hand after a stroke left her painting hand paralyzed and motionless.

Each illustration is available as a package of 10 with white envelopes at a cost of \$10 each (includes tax).

To order cards, please drop by or call the Foundation Office at 905-878-4141 ext. 8505. Christmas cards can also be purchased at The Foundation booth at the November 15th Community Bazaar at Milton Mall.

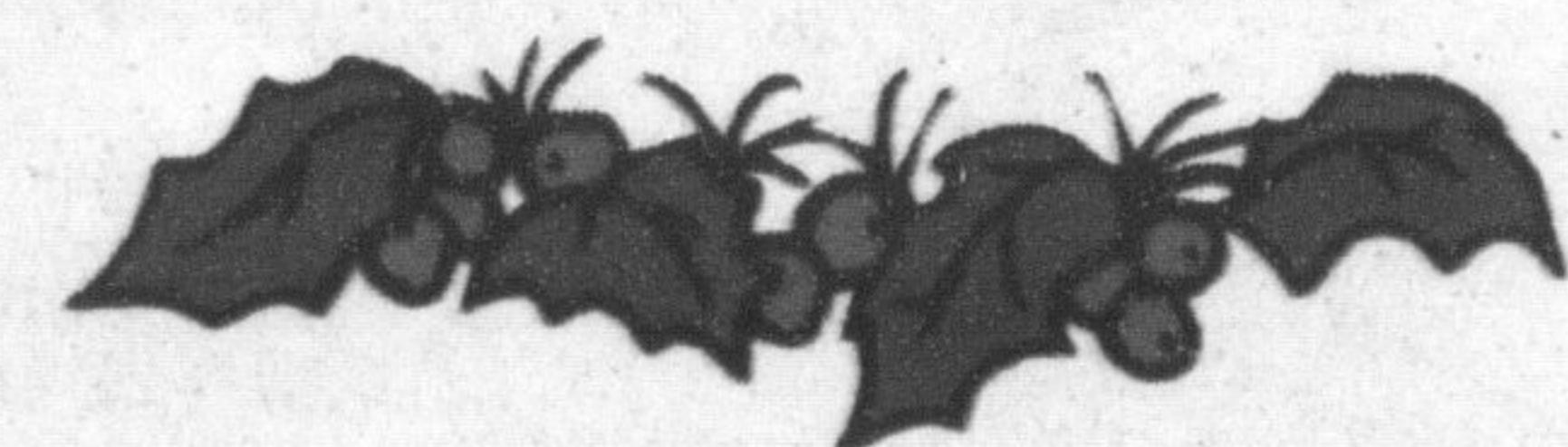
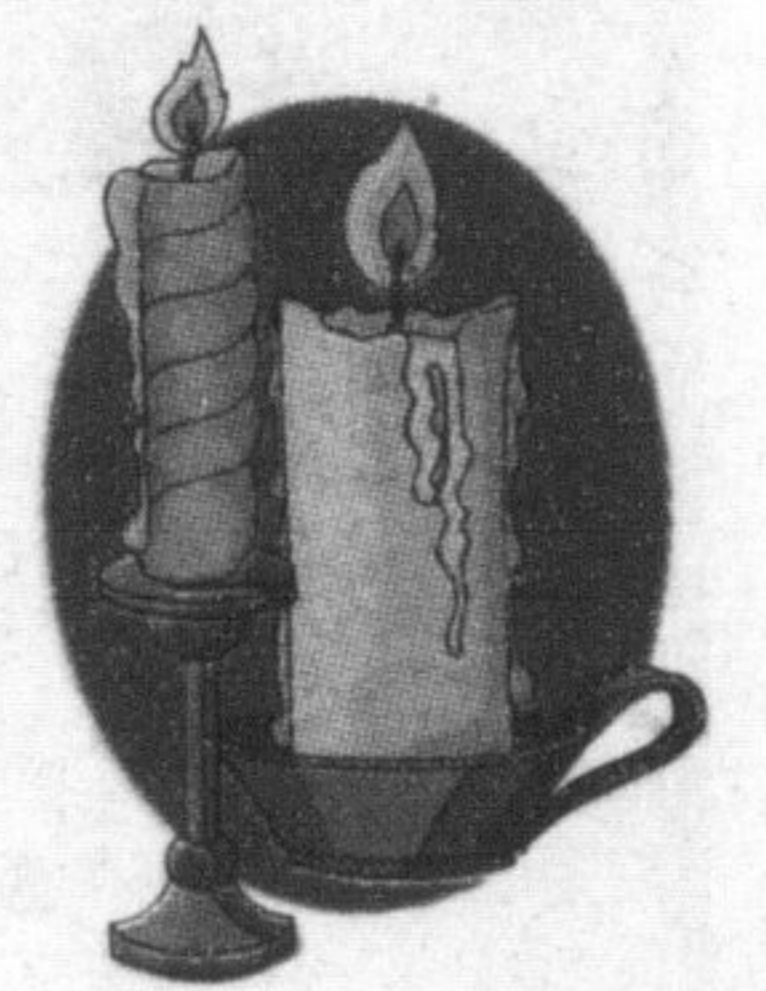
## Shop for special Christmas gifts at 4th annual Silent Auction Nov. 14

Allendale is hosting its Annual Silent Auction on Friday, November 14th in support of The Allendale Foundation. The Auction takes place from 9:00 am to 3:00 pm in the Allendale Auditorium and is open to the public.

Auction proceeds will support programs and services that improve the quality of life for Allendale residents. If you would like to donate an item to the auction, please contact Anthea Hoare at 905-878-4141 ext. 8025.

Auction items that would make great Christmas gifts include:

- Toronto Raptors tickets
- Six months of free high speed internet residential service from Cogeco
- Irish knit sweater
- Sonic Toothbrush
- Artwork
- Candles



## Allendale Christmas Bazaar on Friday, November 28

Christmas comes early at Allendale with the Annual Christmas Bazaar taking place on Friday, Nov. 28th.

Hosted by the Allendale Recreation Dept., Allendale Day Programs and the Allendale Ladies Auxiliary, it takes place from 11 am to 2 p.m. in the Auditorium, and features raffles, crafts, bake sale and tea room..

Proceeds from the bazaar support resident programming at Allendale.

*Enhancing the Quality of Life of Seniors and Disabled Adults in Halton Region*