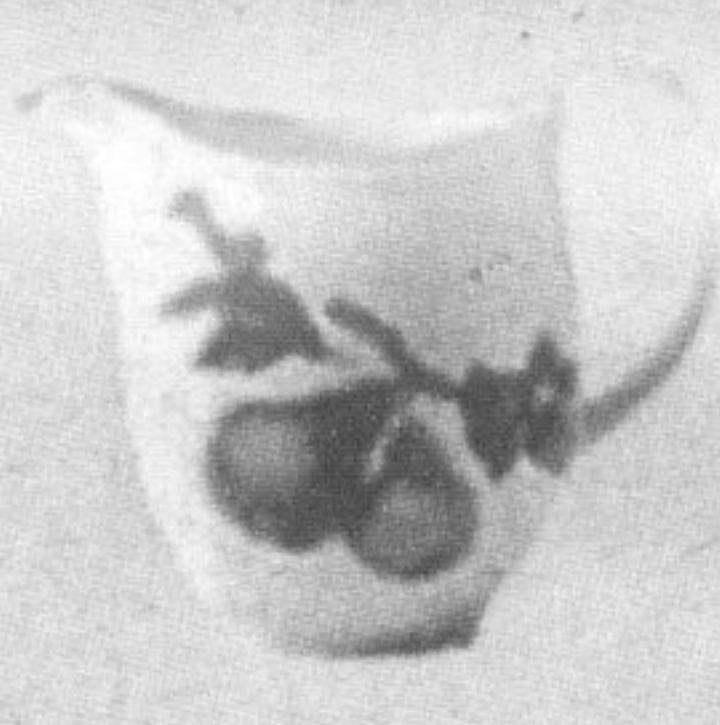




Teapot & Lid L/S  
\$122.99



Coffee Pot & Lid  
\$136.99



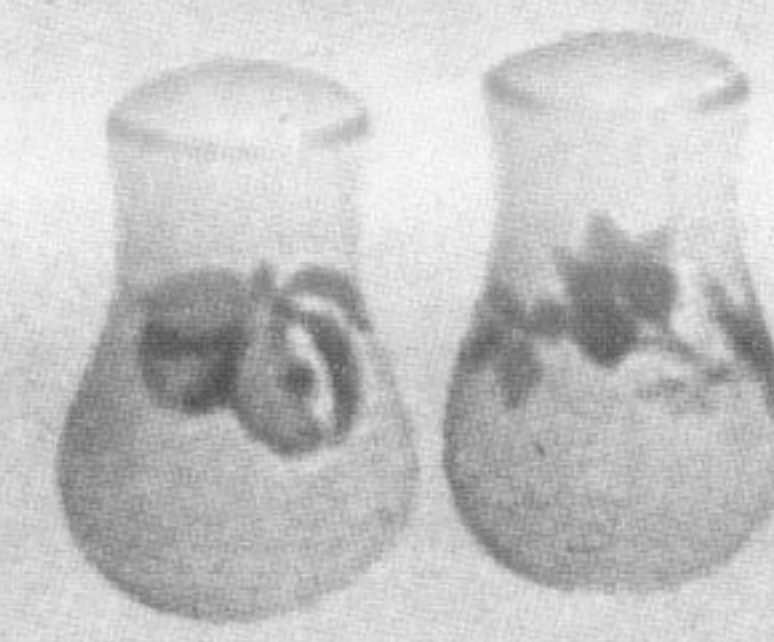
Cream Jug  
\$52.99



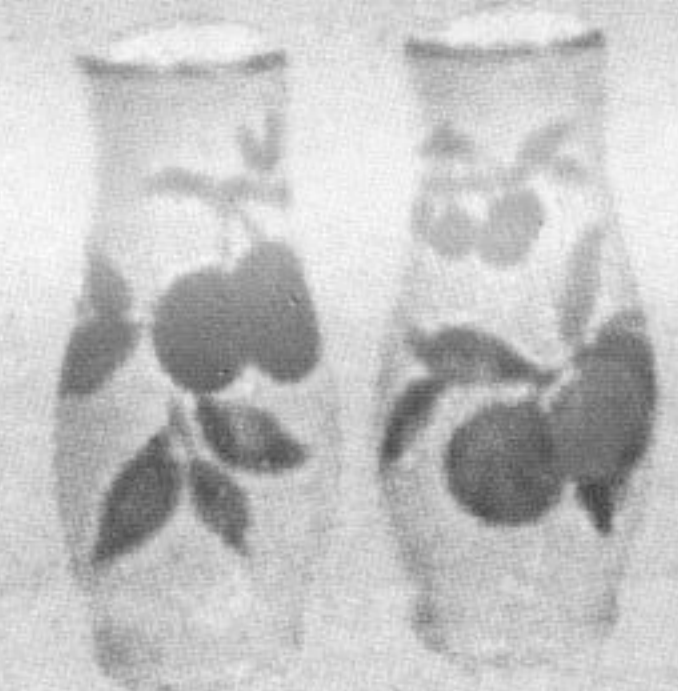
Sugar Bowl & Lid  
\$62.99



Ramekin  
\$14.99 ea.



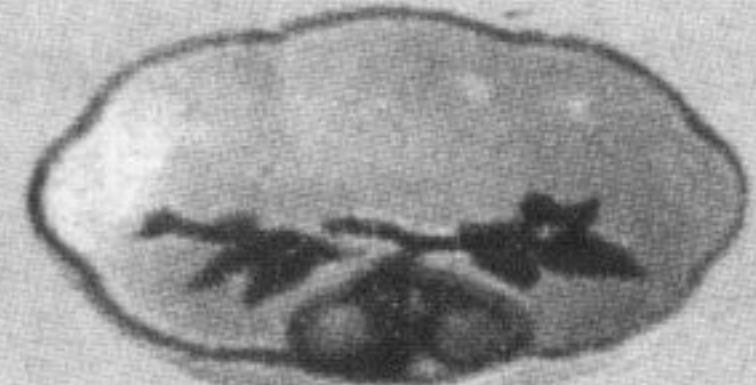
Salt & Pepper 3"  
\$52.99



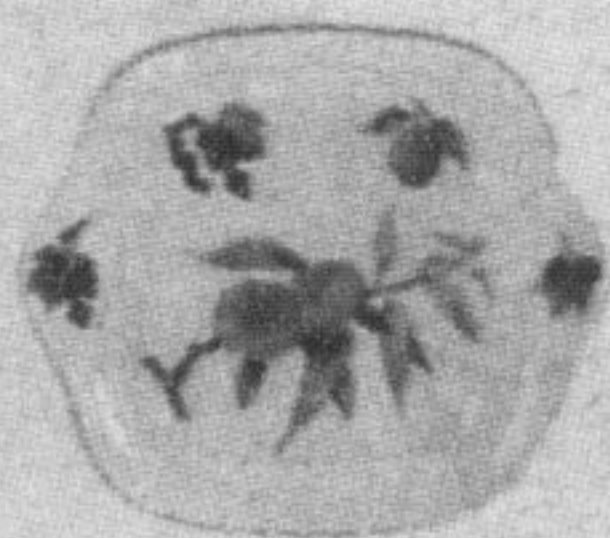
Salt & Pepper Tall 6.5"  
\$101.99



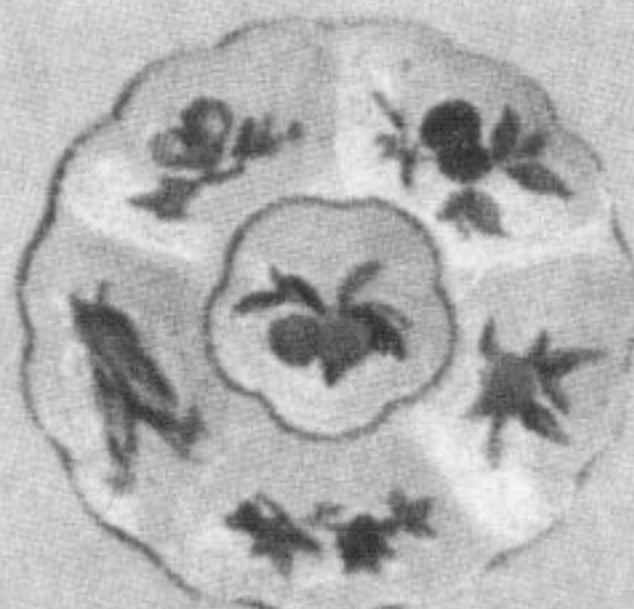
Square Platter  
14.5" 13" 11"  
\$66.99-\$108.99



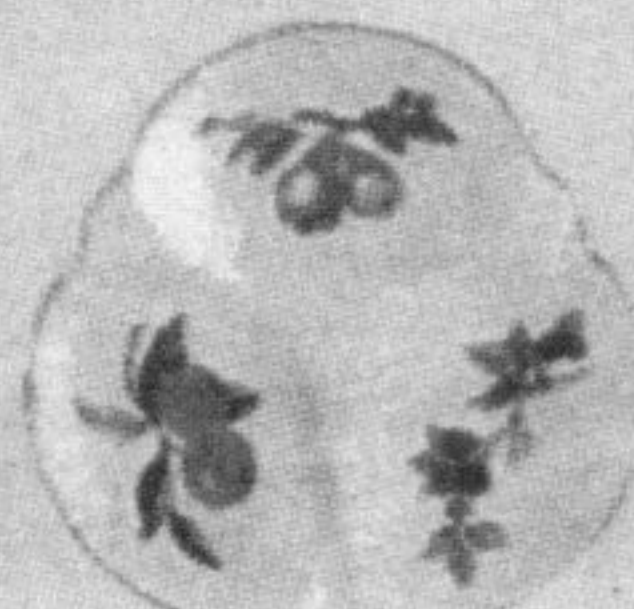
Candy Dish 6"  
\$31.99



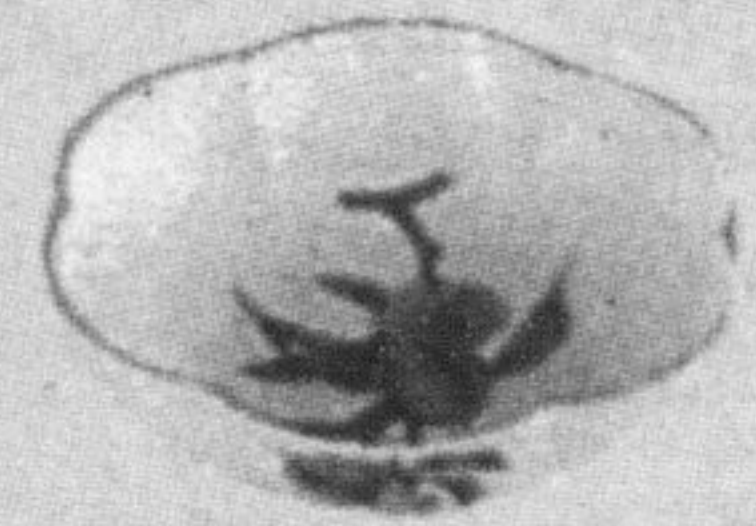
Square Cake Plate  
11" x 9.5"  
\$73.99



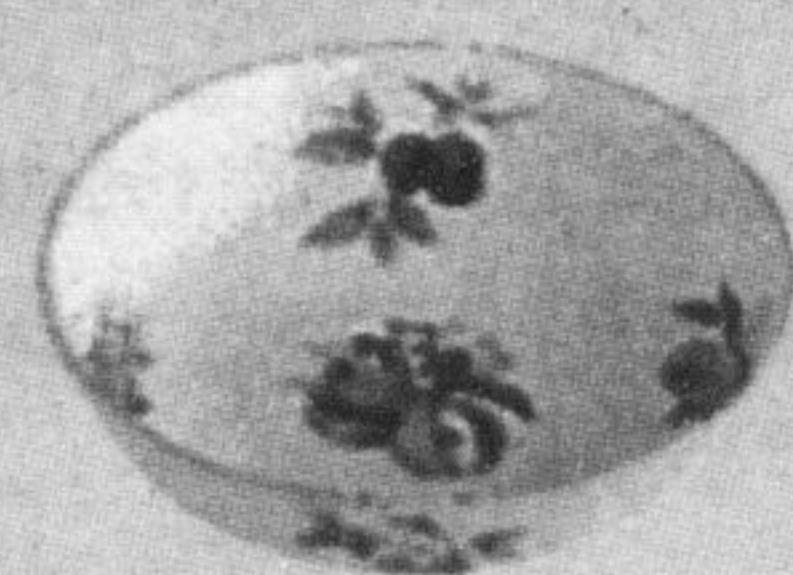
Chip & Dip 13.5"  
\$111.99



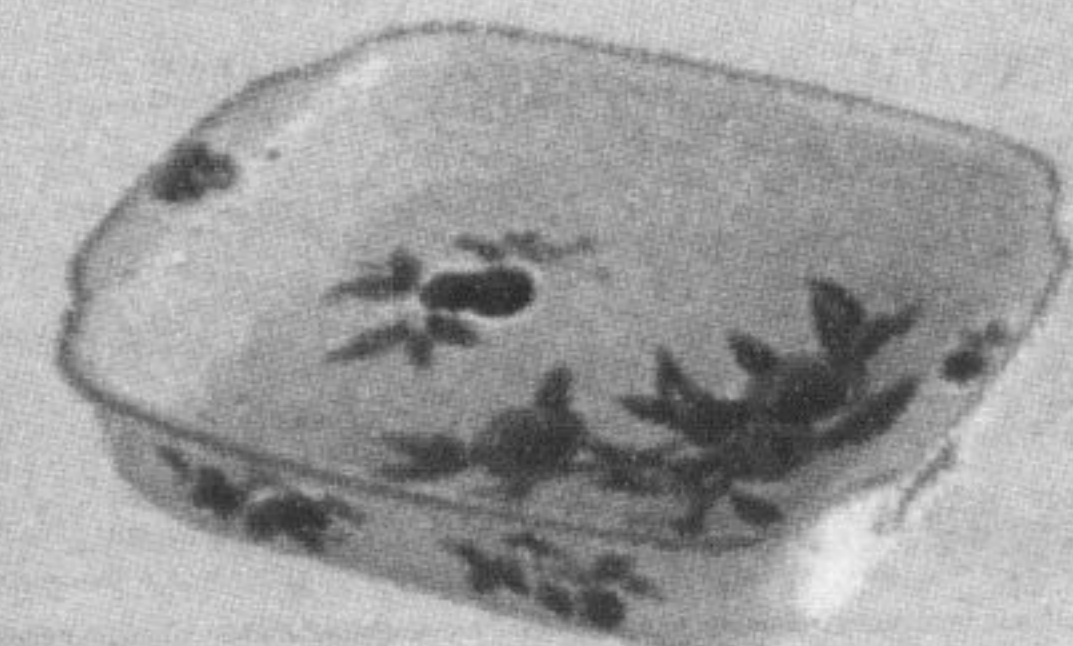
Triple Tray 10"  
\$73.99



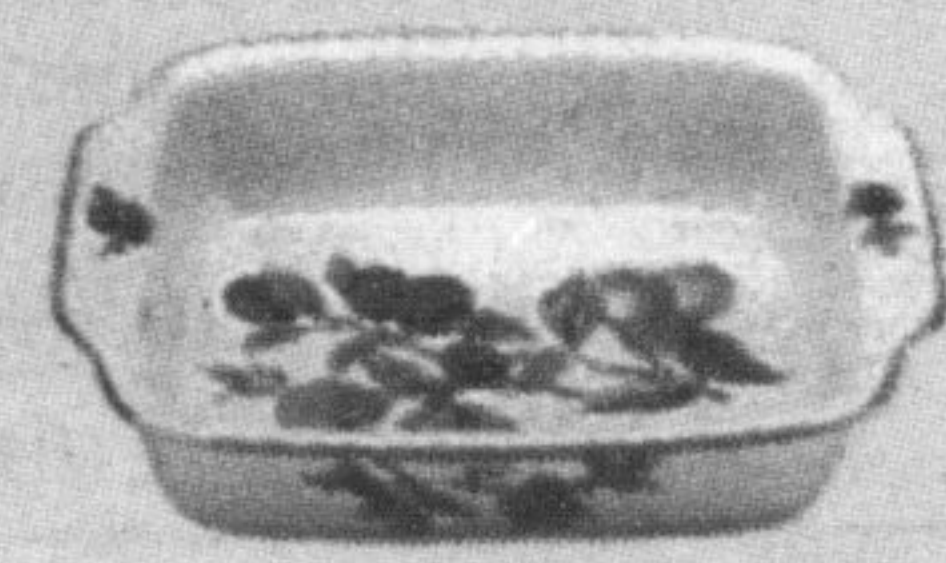
Round Scalloped Dish L/S  
8.5"  
\$66.99



Low Bowl 10" \$76.99  
Low Bowl 13" \$119.99



Lasagne Dish L/S 15.5" x 12"  
\$136.99



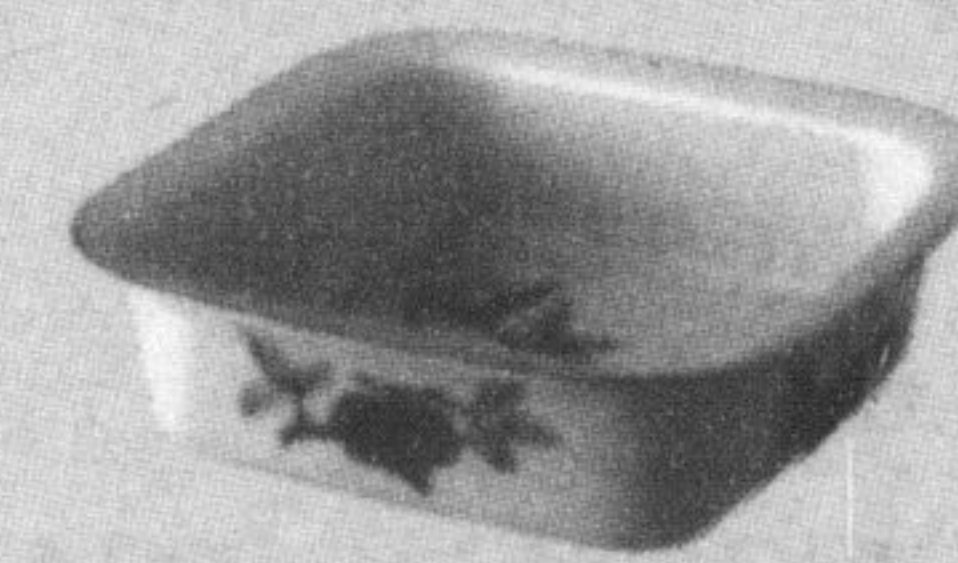
Lasagne Dish S/S 11.5" x 9"  
\$94.99



Hors d'Oeuvres/Rectangular  
Baker 14 x 8"  
\$97.99



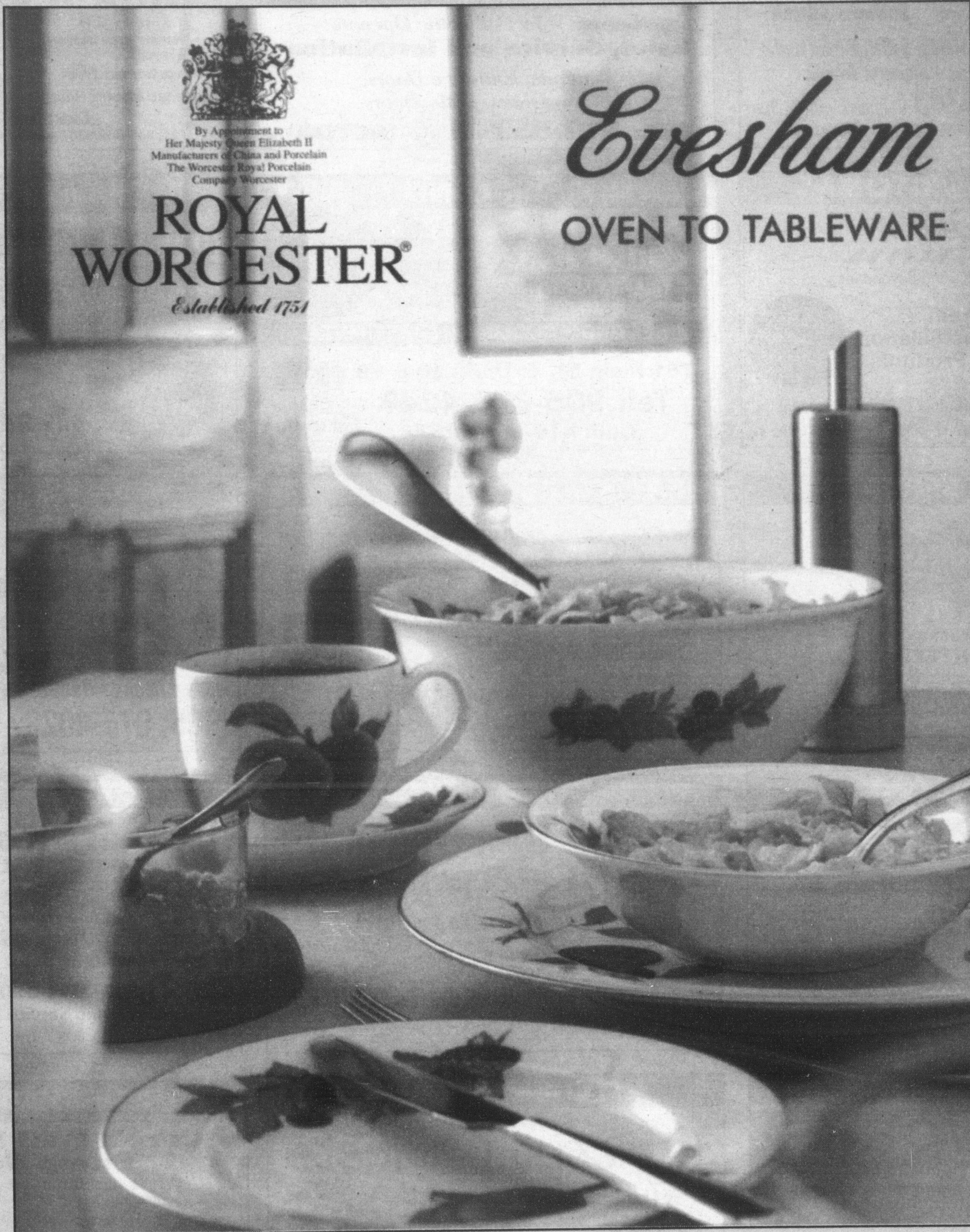
Round Covered Entrée 9.75"  
\$136.99  
Round Covered Entrée 8.25"  
\$104.99



Square Dish  
12" 10" 8"  
\$62.99-\$108.99



Tea 'n' Toast  
\$59.99



By Appointment to  
Her Majesty Queen Elizabeth II  
Manufacturers of China and Porcelain  
The Worcester Royal Porcelain  
Company Worcester

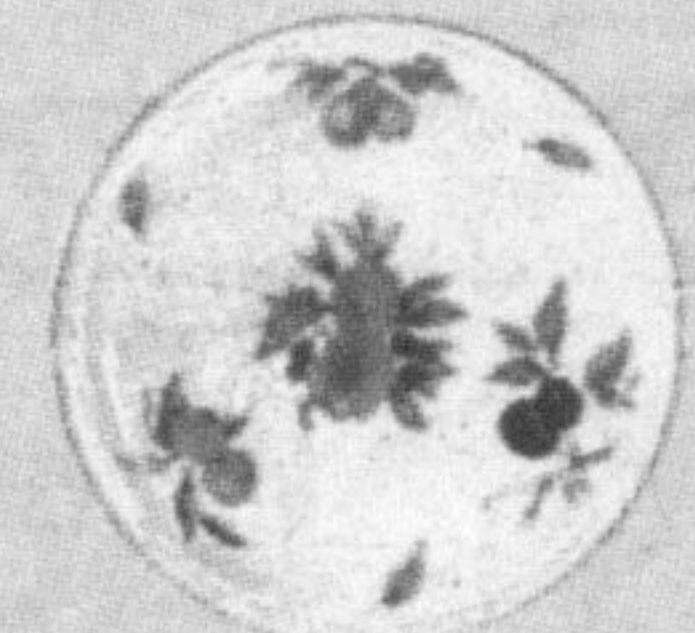
**ROYAL  
WORCESTER**

*Established 1751*

*Evesham*  
OVEN TO TABLEWARE



Butter Dish & Cover  
\$76.99



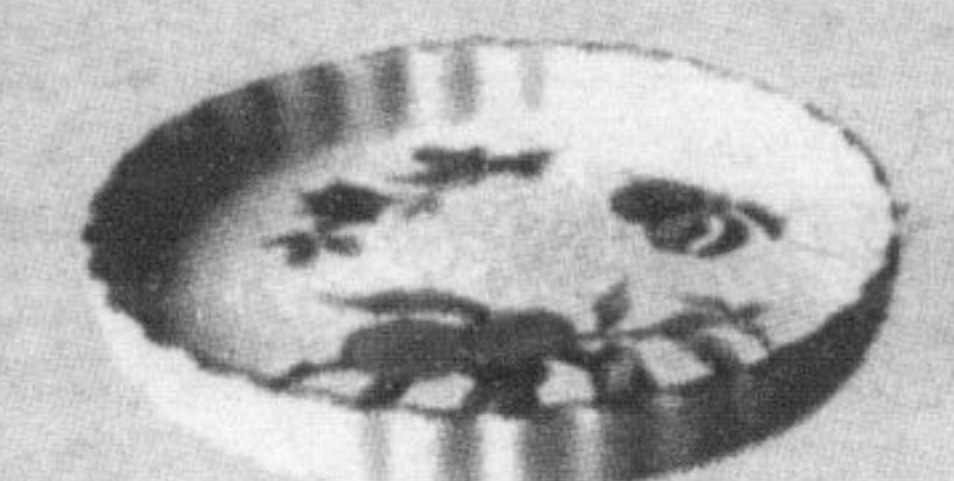
Pizza Plate 13"  
\$76.99



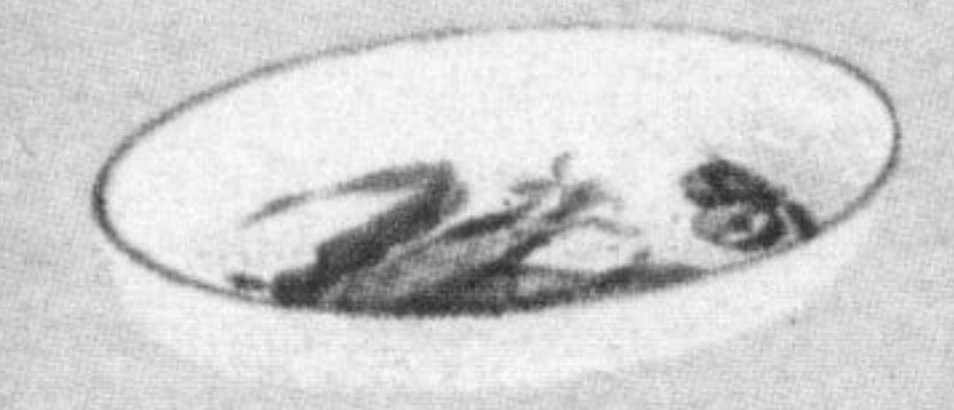
Oval Platter  
Lg. \$111.99  
Sm. \$83.99



Sandwich Tray 13"x8"  
\$69.99



Quiche 10" \$62.99  
Quiche 9" \$52.99



Oval Baking Dish 12.5"  
\$59.99



Round Deep Casserole  
4.5 pts  
\$167.99

**FREE**  
Gift Wrapping  
Gift Certificates

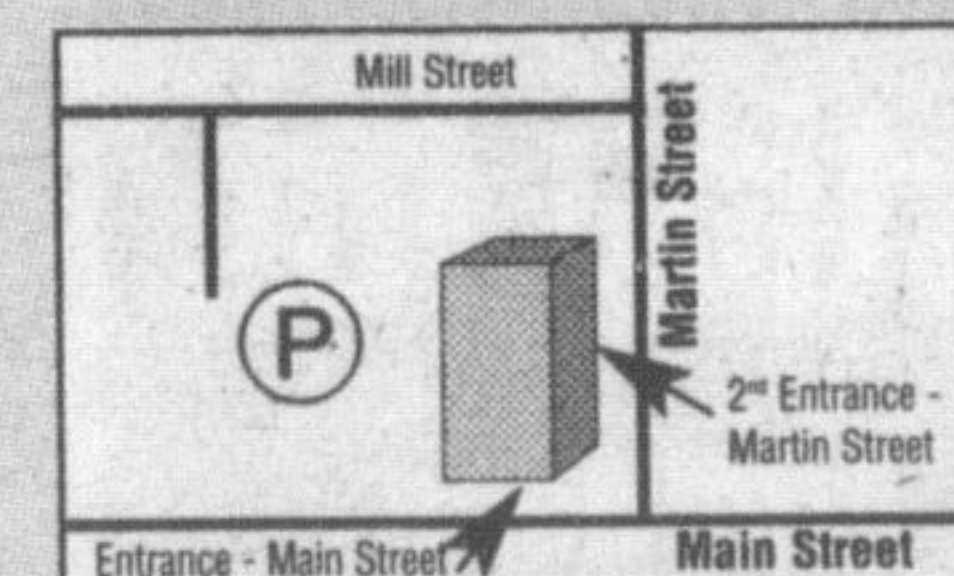
**Delacourt's**

Fine Tableware \* Giftware \* Table Linens \* Bridal Registry

227 Main St. E., Milton  
(Corner of Main & Martin)

905 878-0050 Fax: 905 876-1658  
Toll Free: 1-888-400-8664

Store Hours: Monday, Tuesday, Wednesday 10-6 • Thursday, Friday 10-8 • Saturday 9-5



**Lay-Away NOW**  
for Christmas