

Ward 1 Councillor

(2 to be elected)

John Korta

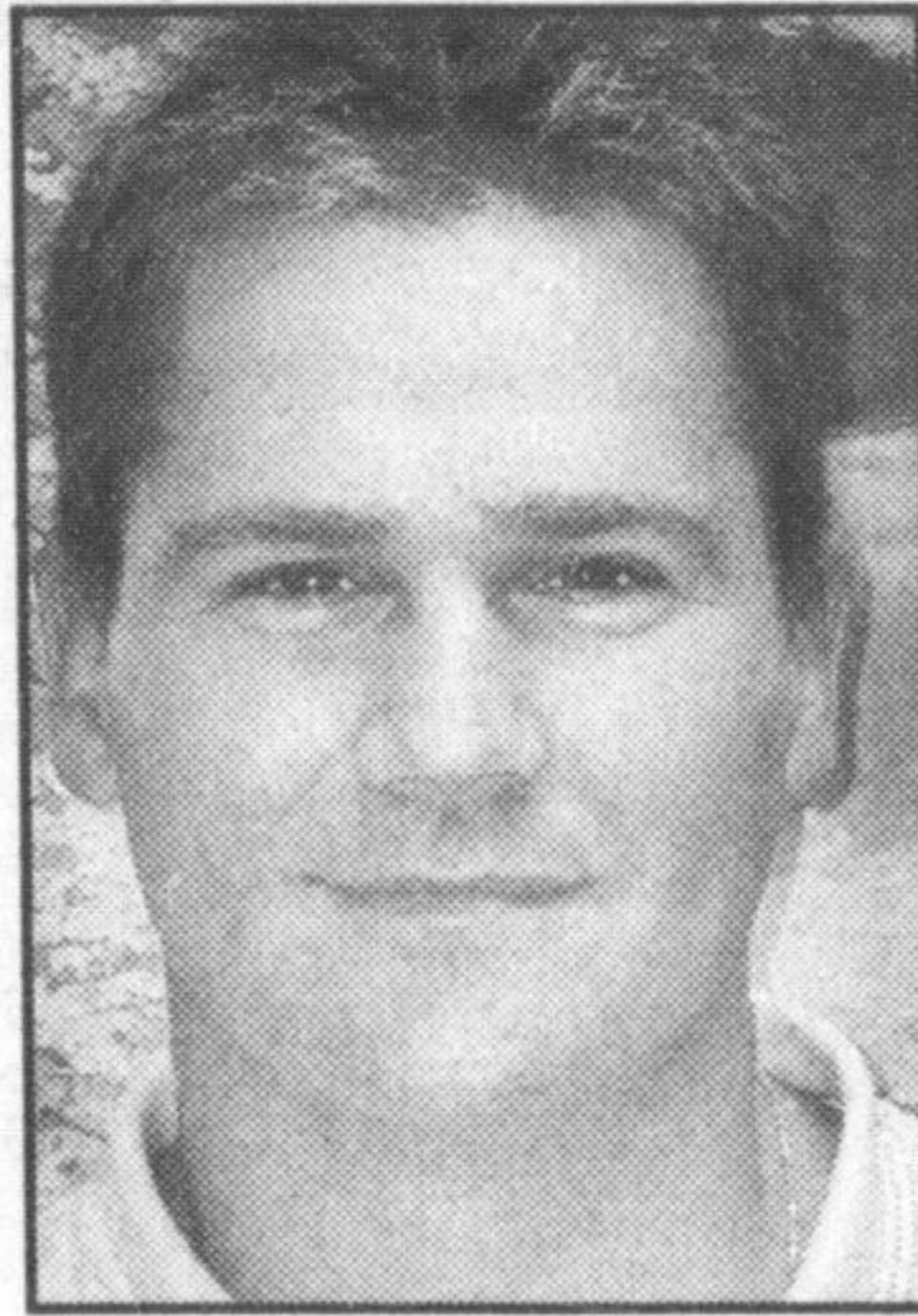
John Korta, 36, is senior manager, finance, logistics pricing at UPS Supply Chain Solutions in Oakville. He's responsible for client and corporate budgeting, business planning, logistics engineering, contract review and client negotiation.

Mr. Korta has been a resident of Milton since 1996. He and wife Nancy reside in Ward 1 with their two daughters age 5 and 18 months.

He coached minor hockey for several years in both Milton and Stoney Creek.

He's a graduate of McMaster University with a BSc Mathematic. He began his career as an actuarial in pension consulting.

Mr. Korta has worked for many types of industry including pension consulting, personal insurance, automotive, industrial manufacturing, transportation and currently third-party logistics.



Why are you running?

I have chosen to run in the local elections because I think all residents of Milton hold a stake in how Milton goes from a small town to a city of over 100,000 residents. I believe my personal background as a senior manager of finance and logistics at UPS Supply Chain Solutions and previous employers has provided me with the necessary business and people tools to tackle the many issues that relate to the accommodation of rapid growth.

I also strongly wish to maintain a sense of community that has long made Milton a wonderful place to live.

What are the local issues?

Where will future tax revenues come from? What types of industrial growth are coming? How can we afford all the necessary town amenities? Will there be the necessary road infrastructure? These are the issues I will put as my top priorities if elected.

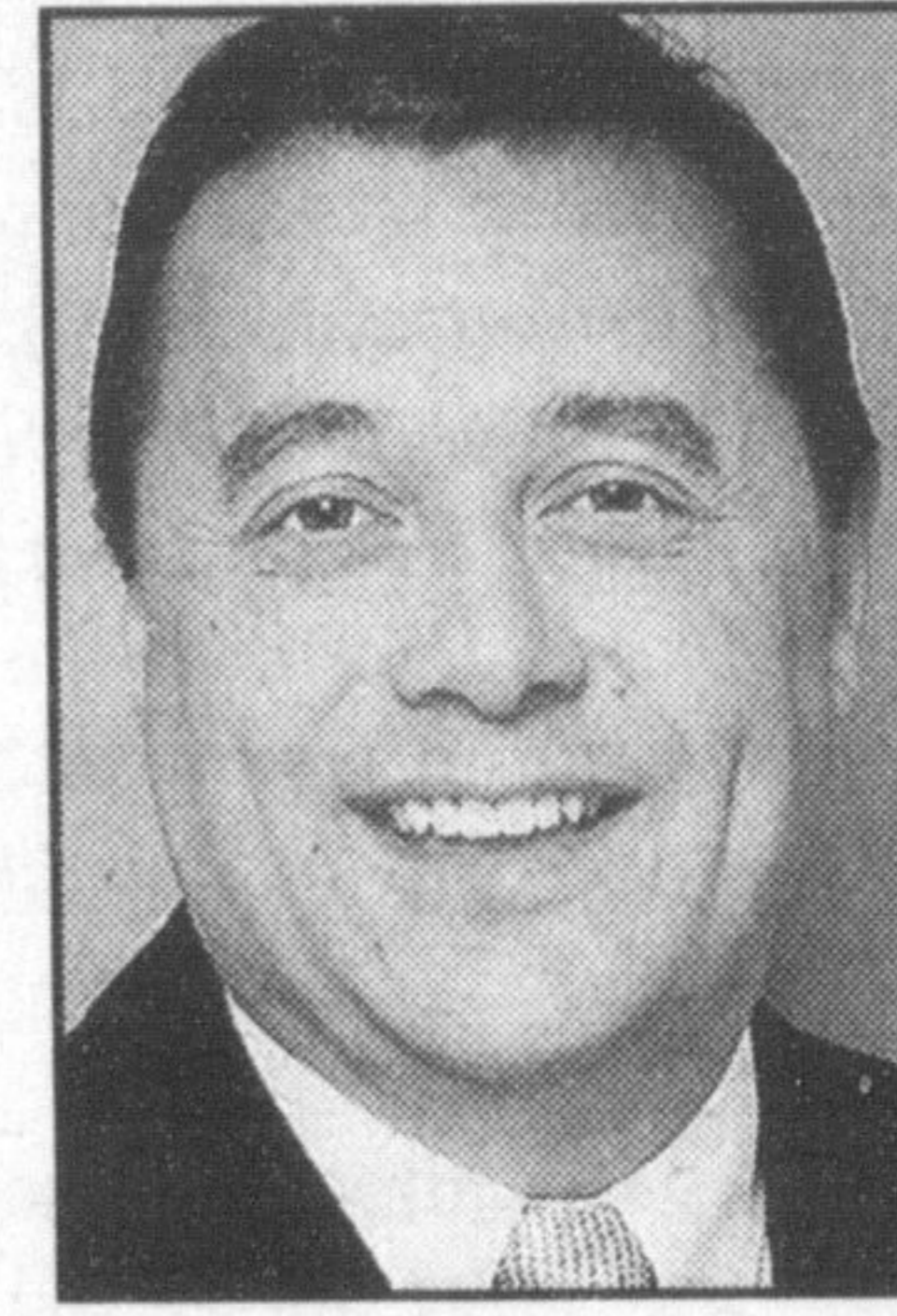
How will you address them?

I believe the future of Milton is in the hands of its current residents and their voice needs to be heard.

Therefore, I will work to be the voice of my constituents to ensure a future town all residents will be proud in which to live.

Lou Medeiros

Lou Medeiros, 41, is an educator with the Peel and Halton boards of education. He has worked for the Peel Board of Education for the past 15 years as an English teacher. He's currently teaching English on-line from his home in Milton to more than 30 students across Canada and Asia. He has served the community as founding president of the Meadowvale Neighborhood Centre of Peel 2001, current president of the Milton Youth Chorus 2002-03, chair and co-chair for the parent/teacher council for Our Lady of Victory School 2001-03, soccer coach for the Milton Youth Soccer Association 2001-03.



Why are you running?

I saw an opportunity to contribute to the enhancement of my community in a positive and active way. Members of our community in Ward 1 come from a wide range of backgrounds but share a common goal; they want to grow and protect their community in a balanced way.

What are the local issues?

For Ward 1, the issues include both short-term issues and issues for the longer term.

The short-term issues include:

- Improving parking control
- Improving municipal bylaw enforcement
- Providing better communication with residents

The long-term issues include:

- Fast-tracking a more realistic public transit

plan

- Improving policing, snow removal, garbage collection and recycling

- Improving sidewalks and biking trails throughout Milton

- Improving communication between established communities and new sub-

divisions in Milton.

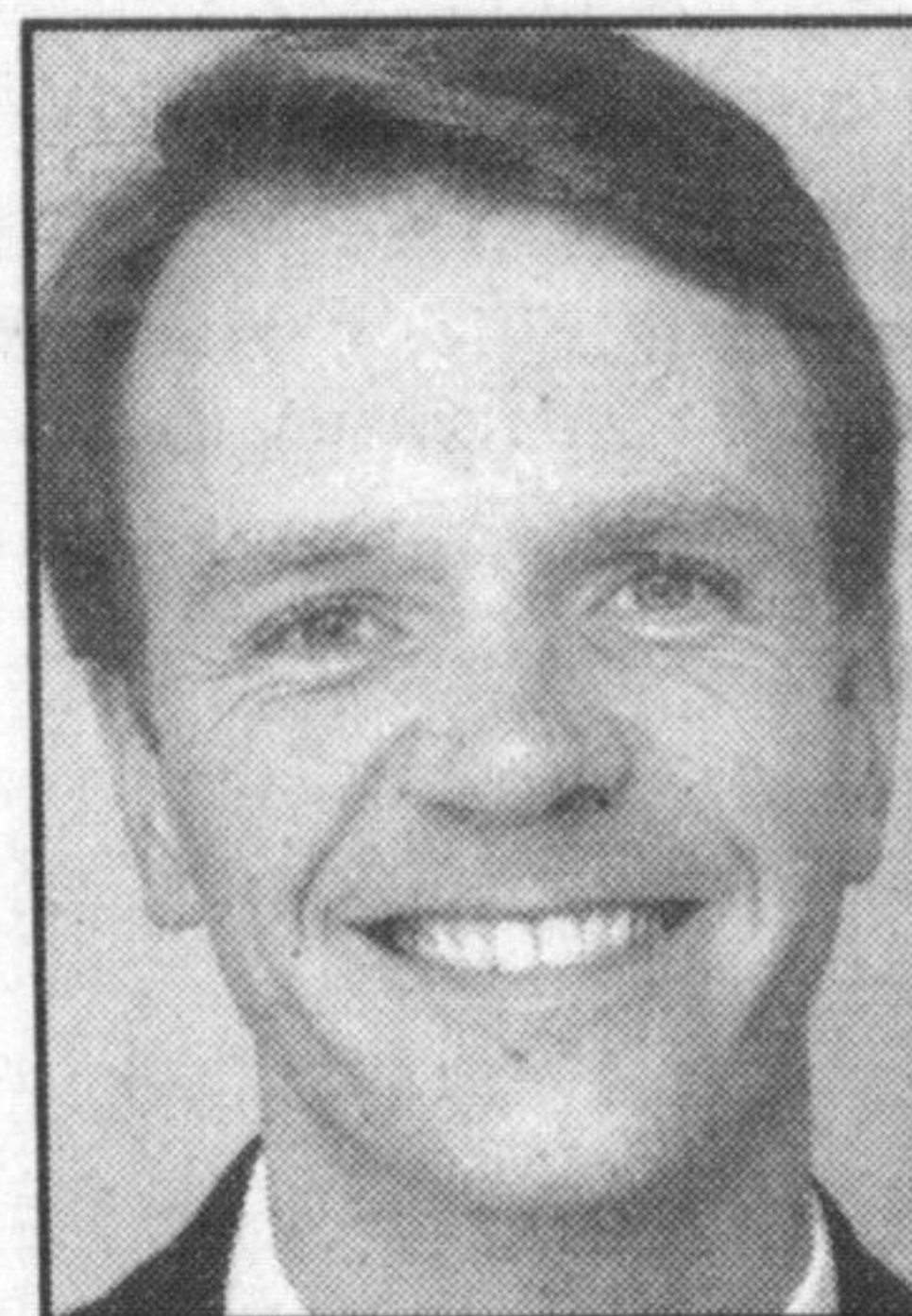
How will you address them?

To address the short-term issues, I plan to work closely with my colleagues on council to review and re-work some of the existing by-laws to reflect what is really happening in Ward 1. I will establish a more open and accessible network of communication by introducing a quarterly newsletter and establishing Town Hall-styled meetings annually.

To address the long-term issues, I plan to meet with Regional and Provincial officials to establish a realistic transit plan for Milton and its residents. I will establish clear and concise time lines for the improvement of sidewalks and bike paths along major arteries in our ward. I plan to foster communication and co-operation between all communities in Milton.

Greg Nelson

Greg Nelson, 38, is an independent sales agent. He volunteers in the community as chairman of the Milton Community Consultation Committee, a member of the Milton Physician Recruitment and Retention Task Force and a member of the Milton Mayor's Youth Advisory Council.



Residents in the new subdivision in Ward 1 want to be part of finding a practical and safe solution for implementing bike paths in the area. I strongly believe in this and would want the Town staff and the developer to team up with them. It's a healthy, democratic

process. We need to be mindful of the quality of life for rural residents so they don't get lost in the shuffle. Councillor-constituent communication is the key.

Development to date has taught us some hard lessons on what works and what doesn't. A solution must be found to help families that lack parking without introducing safety hazards for emergency vehicles. There is development in the works for public transit. The timeframe needs to be examined and it needs to truly reflect the population. Milton's youth need to be given the opportunity to be heard and be more involved in decision processes that affect them. I will continue to work on improving relationships between youth and police through workshops and sports events.

Why are you running?

I have a strong desire to be part of the process of nurturing Milton's growth while not losing sight of what's important to its residents. Many people have moved to Milton and still live here because of what this town has to offer. It is critical that we protect it.

What are the local issues?

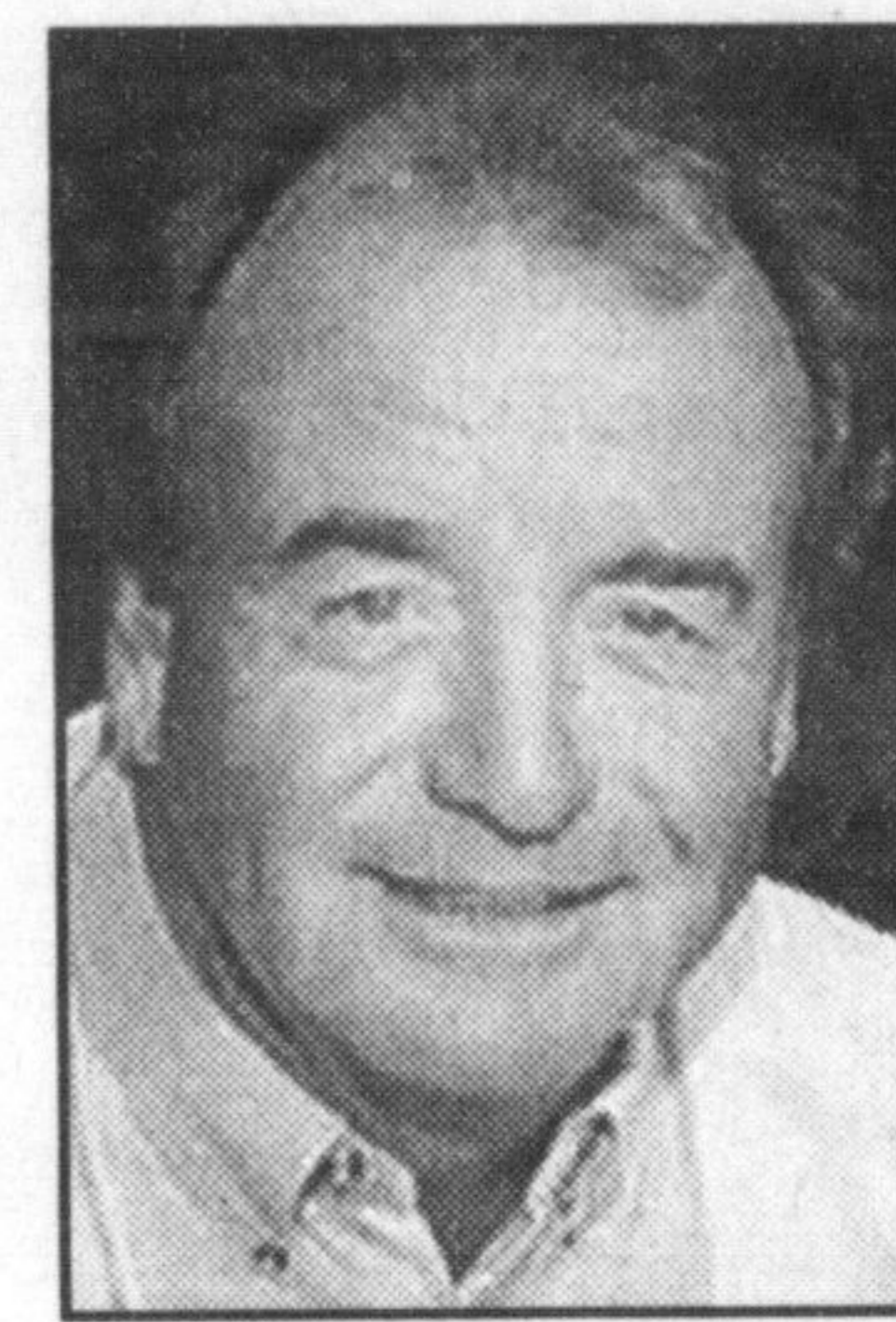
- We need to improve a communication flow between the residents, developers and town staff.
- Relocate bike paths in new subdivision to more safe and practical locations.
- Consequences of industrial expansion and the rail intermodal for rural residents
- Parking
- Improved transportation
- Resources for youth in the town
- Communication between school boards and parents
- Relationship between youth and police

How will you address them?

Councillors need to help open up dialogue between their constituents, Town staff and devel-

Howard Pfeiffer

Professionally, for the last 35 years, Howard Pfeiffer, 64, has been involved in sales, marketing and manufacturing with one of the largest clothing companies in Canada. His career culminated for the final 13 years as president and CEO of Warnaco of Canada, a business that employed approximately 750 people.



What effect will future development plans, including the mid-peninsula highway, have on the Niagara Escarpment and our rural lands?

Traffic — There is increased rush hour traffic on Derry Road, Tremaine, Steeles, and other roads as people from

Burlington and Hamilton increasingly use these roads to bypass the 407 and Highway 5.

How will you address them?

Development — Council must prevent these problems before they occur. Council needs to protect our natural resources while planning for the future growth of Milton.

Traffic — I am presently on a steering committee for the residents in the area of the No. 14 Sideroad and Tremaine Road intersection, which has become a major safety concern for anyone (driver, cyclist, hiker) trying to turn or cross at this increasingly busy and dangerous intersection. This is one of the town's best gateways to the escarpment and everyone's safety is at risk without traffic lights to control the speed and crossings at the intersection.

We are Canadian owned with 1000's of lumber products, home improvement merchandise and ideas!

RONA
CASHWAY
BUILDING CENTRES

700 Main Street East, Milton
905-878-8171

- Deck & Fence Design
- Contractor Services
- Computerized Kitchen Design
- Painting & Decorating Needs

Convenient Store Hours with friendly, helpful service.
Monday - Friday 7:30am - 8:00pm
Saturday 8:00am - 6:00pm
Sunday 10:00am - 5:00pm

Canada's very own home improvement and building professionals