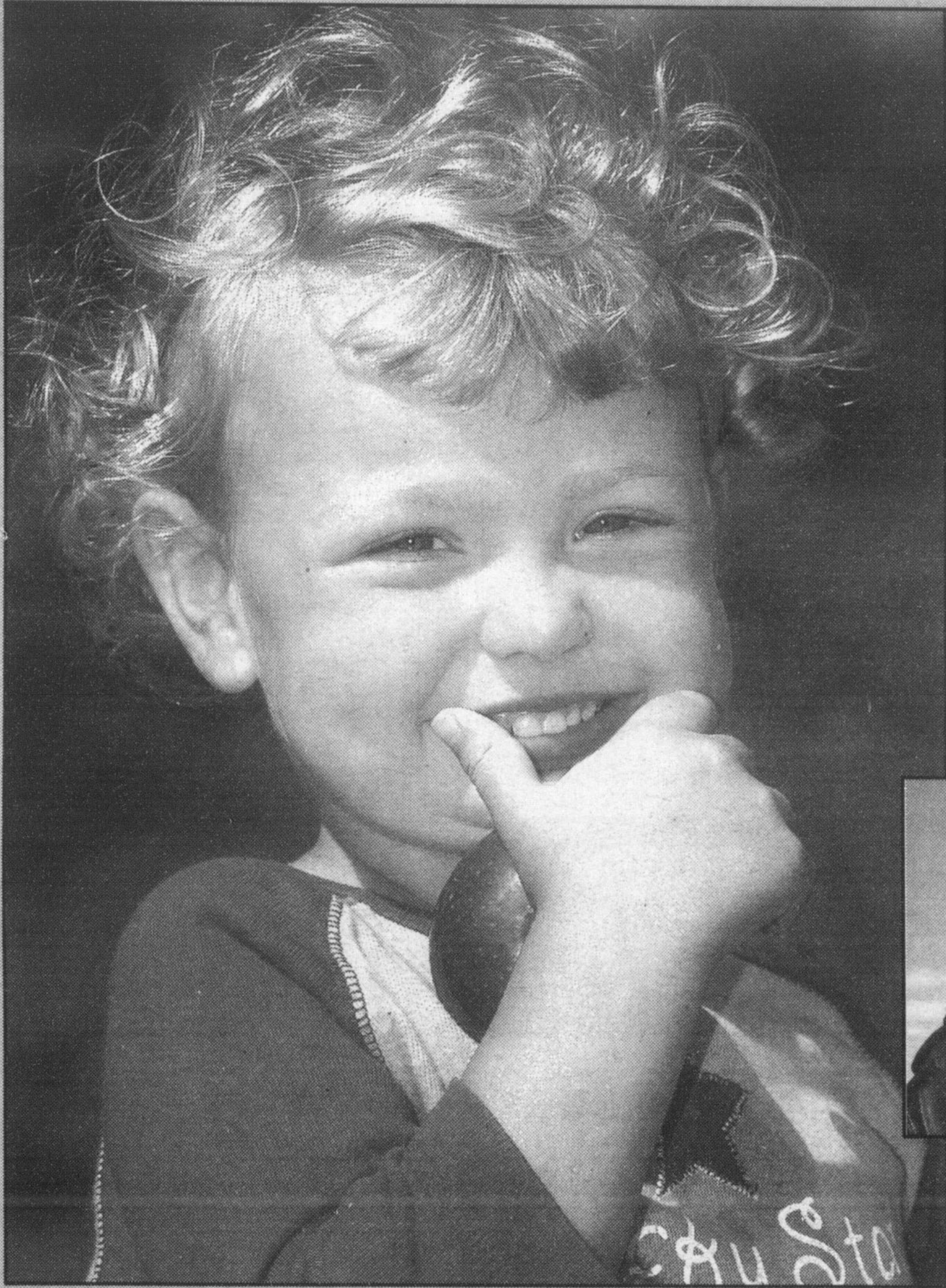


Champion

COMMUNITY *Page*

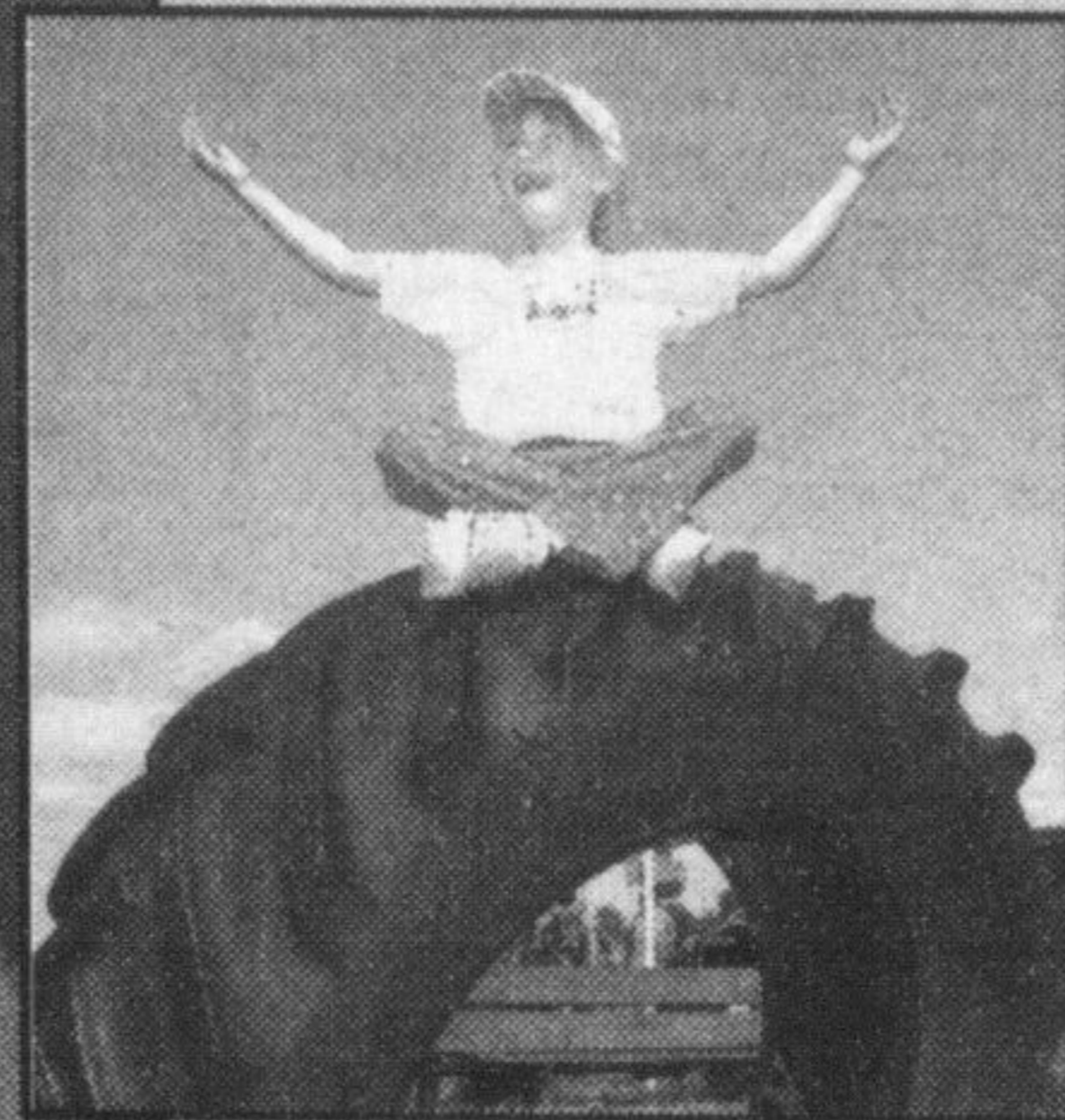
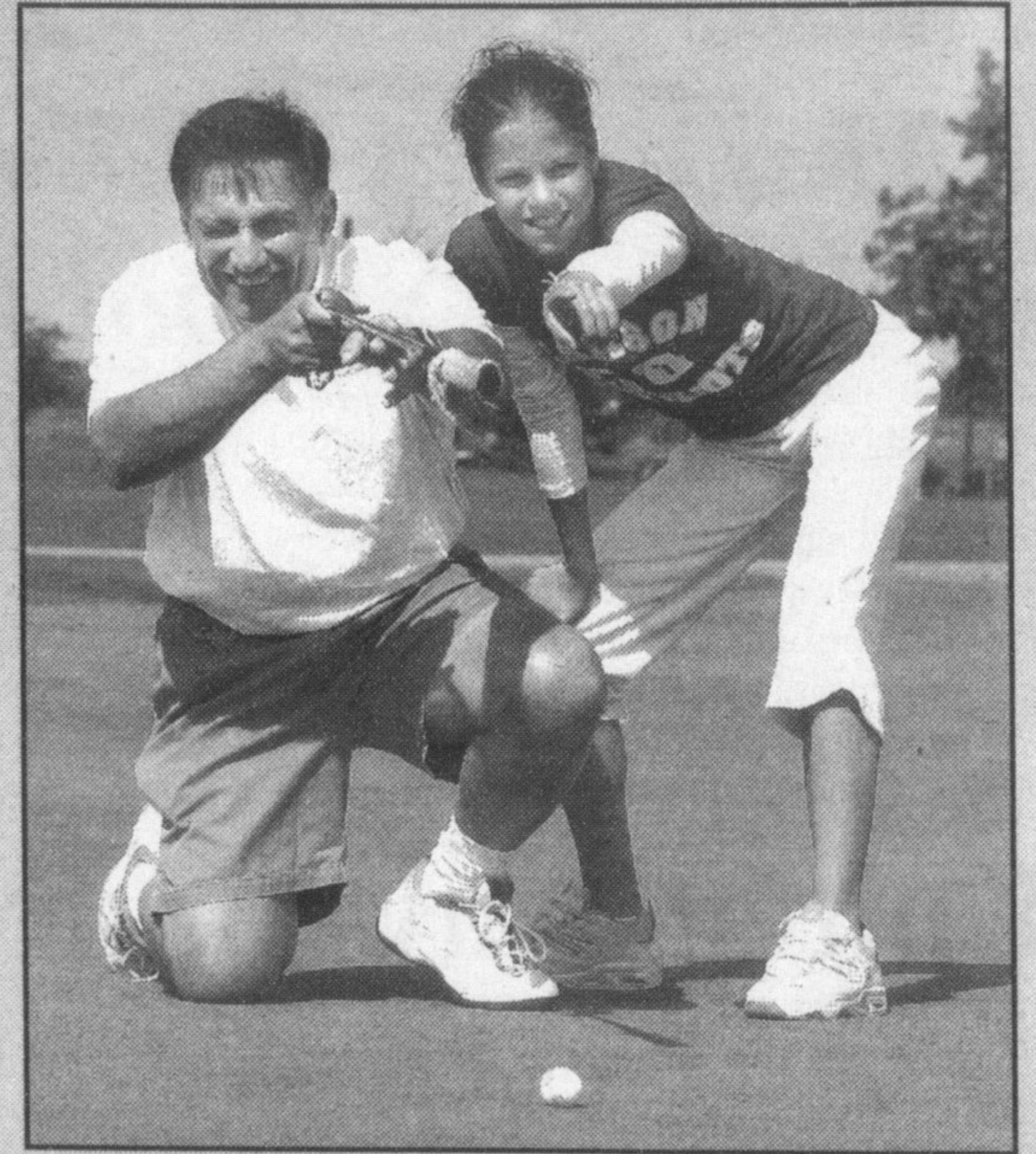


KAREN'S FLOWER SHOP
 Visit us at
www.karensflowershop.com
 487 Laurier Ave.
 878-2881

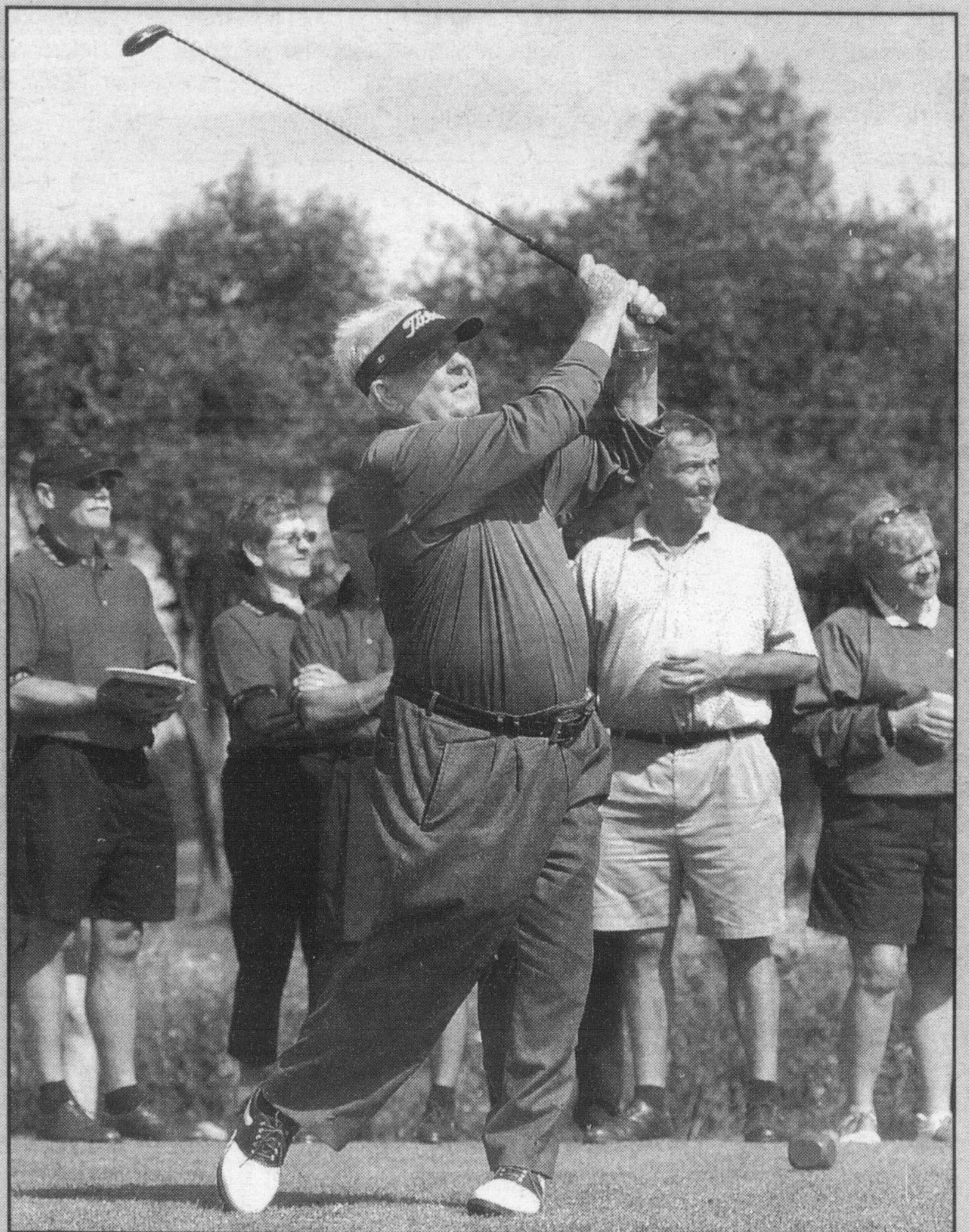
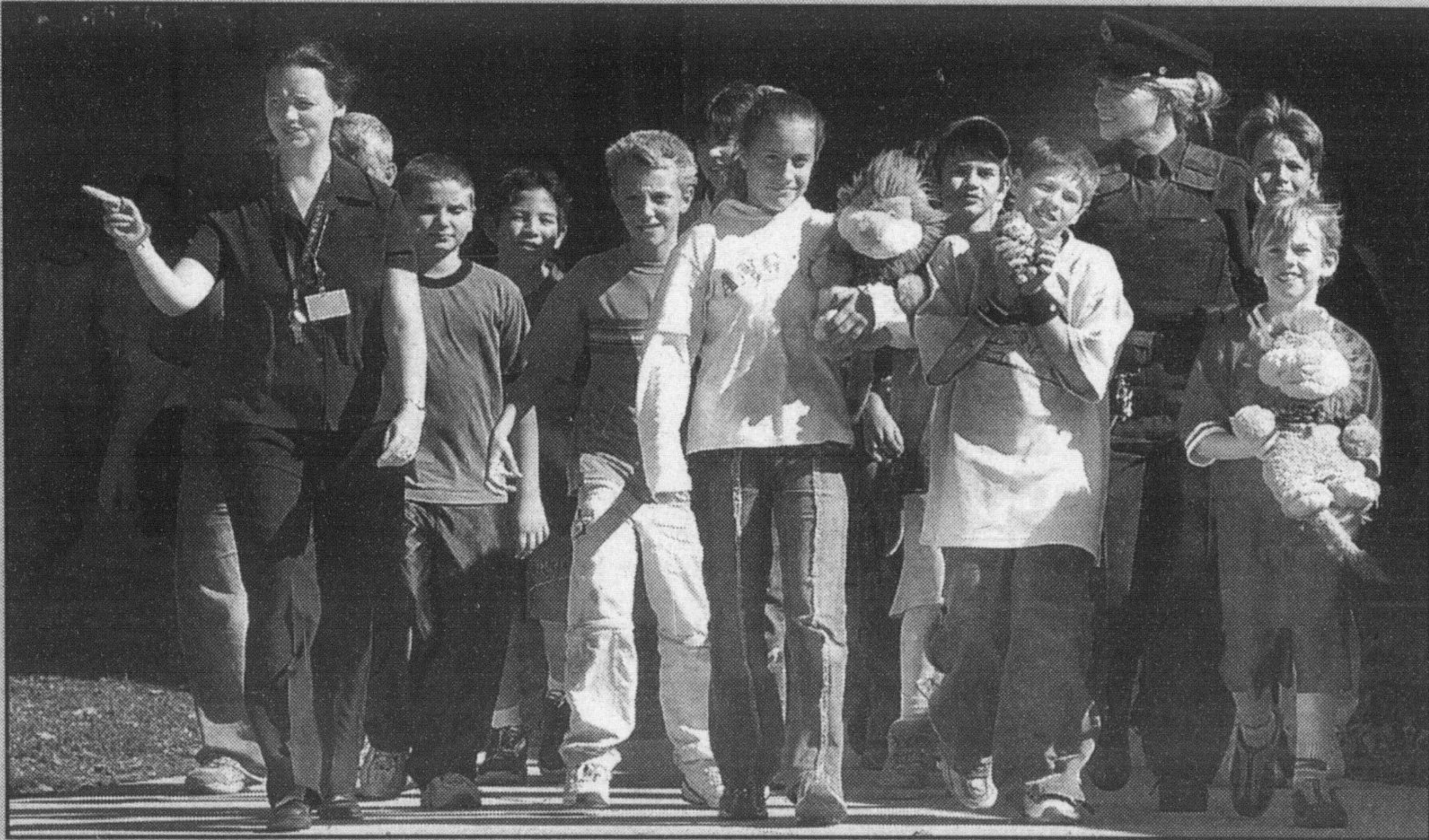


Community collage

At left, little Anna Wlasznowicz enjoys an apple while Kelsey Walker (inset below) sits atop a giant tire in the children's play area at the recent 75th anniversary of Rae's Farms. Bottom left, St. Peter's School students are joined by police officer Wendy Chapman during Wednesday's DARE walk-a-thon. At right, Halton Learning Foundation CAO Aldo Cianfrini gets putting tips from volunteer Marsha Pritchard during the organization's recent golf tournament at Rattlesnake Point Golf Club. Bottom right, retired golf pro Moe Norman puts on a clinic to start the recent Allendale Corporate Challenge Golf Tournament at Granite Ridge Golf Club.



Photos by
GRAHAM PAINE



Keeping North Halton turned **ON!**

www.cogeco.ca

NORTH HALTON STUDIO

Laurier Plaza

500 Laurier Avenue

Milton, ON L9T 4R3

905-878-9306

COGECO 14

Programming Schedule – Tuesday, October 14 - Monday, October 20th, 2003

| Tuesday, October 14th | | Wednesday, October 15 | | Thursday, October 16 | | Friday, October 17 | | Sunday, October 19 | | Monday, October 20 | |
|-----------------------|--------------------------------------|-----------------------|---|----------------------|---|----------------------|----------------------------------|----------------------|--|---------------------|----------------------------------|
| 5, 6 & 7:30pm | Plugged In! Early Week Edition | 5, & 6 pm 5:30pm | Plugged In! Early Week Edition The War Amps Present... | 5, & 6pm 5:30pm | Plugged In! Early Week Edition With Good Taste | 5pm, 6pm & 7:30pm | Plugged In! Late Week Edition | 10:30pm | Cogeco Sports: HS Football Central vs Elgin | 5 & 6pm & 7:30pm | Plugged In! Late Week Edition |
| 5:30pm | Seniors' Showcase | 6:30pm | Be Inspired | 6:30pm | Main Street | 5pm, 6pm & 7:30pm | Plugged In! Late Week Edition | 5pm, 6pm & 7:30pm | Plugged In! Late Week Edition | 5:30pm | Osler Health Connection |
| 6:30pm | Optimist TV Bingo (live) | 7:00pm | Swap Talk (Live) | 8:00pm | Halton Region Council: October 8th | | | 5:30pm | Be inspired | 6:30pm | Seniors Showcase |
| 8:00pm | Milton Ambassador Competition | 8:00pm | Auto Experts (Live) | | | | | 6:30pm | Seniors Showcase | 7:00pm | With Good Taste |
| 9:00pm | Halton Hills Council: October 6th | | | | | | | 7:00pm | Osler Health Connection | 8:00pm | SportsZONE Live |

Debut of "Be Inspired" on Wednesday, 6:30pm