

Dateline

Saturday Oct. 11

The Hornby community hall on Steeles Avenue hosts **Hornby Euchre** at 7:30 p.m.

Tuesday Oct. 14

The Nassagaweya Historical Society invites people to its **Scan Night** at Nassagaweya Presbyterian Church at 8 p.m. People are invited to bring their old photos of Nassagaweya Township to scan and save electronically for the group's archives. For more information, call (905) 854-6111 or call Eli Daigle, president, at (905) 854-2628.

The Trillium Photographic Club hosts its **Digital Evening** to celebrate the world of digital photography at 8 p.m. at East Plains United Church, 375 Plains Rd. E., in Burlington. For more information, call Marilyn Chayka at (905)

634-7803, ext. 255.

Improve communication and leadership skills with the **Milton Toastmasters**. Everyone is welcome to attend the meeting at the Royal Canadian Legion, 21 Charles St. (upper level), at 7:30 p.m. For information, call Allan Lahue at (905) 877-3441.

The Art of Healthy Living holds a **parent support group** for parents of children who are dependent on drugs or alcohol. The group meets at 72-74 Mill St. in Georgetown from 7:30 to 9 p.m. For more information, call (905) 702-7304.

Help for Parents, a parent support group, meets in Burlington. This non-denominational self-support group helps parents of children who are in trouble at home, at school or with the law or who are abusive or taking drugs. The group is a member of Association of Parent Support Groups in Ontario. For times and directions, call

1-800-488-5666 or visit www.apsgo.ca.

Calling New Parents, a free program for parents and babies aged 6 months and younger, meets with a public health nurse to discuss parenting and infant care. The group meets at the Milton Community Resource Centre, 917 Nipissing Rd., from 1:30 to 3:30 p.m. For more information, call (905) 693-4242, ext. 7899.

Milton District Hospital holds a **breastfeeding support group** with a certified lactation consultant from 9:30 to 11:30 a.m. For more information or to make an appointment, call Jean Gallen at (905) 878-2383, ext. 7030.

Wellspring Halton-Peel — a support centre for people with cancer and their families — holds its drop-in **Caregiver Connection** from 7 to 8:30 p.m. at the centre, 2545 Sixth Line, in Oakville. For more information, call (905) 257-1988.

The Milton Seniors' Activity Centre, 500

Childs Dr., holds **bingo** at 1:30 p.m. The drop-in fee is \$1.50 for members and \$2 for non-members, plus five-cents per card or 10 cents for a full card. It holds its **Drama Club** at 1 p.m. New members are welcome. The cost is \$1.50 for members and \$2 for non-members. The centre also holds its **Lunch Bunch** group, which enjoys a local dining experience with good food and friendly conversation at a local restaurant. The cost is the cost of your meal. For more information on these activities, call (905) 875-1681.

Wednesday Oct. 15

Milton Gospel Hall hosts the **Milton Christian Ladies Coffee Hour** from 9:30 to 11 a.m. at the church, 306 Ontario St. (one block south of Steeles Avenue). The special feature of this free event will be 'Fall into Fashion'. For **• see more DATELINE on page 18**

TOP 10 REASONS TO GET INTO A NISSAN

- 10 STRIKING DESIGN 9 PROVEN QUALITY 8 FUN TO DRIVE 7 AWARD-WINNERS 6 GREAT SELECTION
5 SUPERIOR SAFETY 4 LEADING TECHNOLOGY 3 POWER 2 THRILLING PERFORMANCE

1 GREAT VALUE

2004 LIMITED EDITION ALTIMA 2.5 S EXTRA

2004 NISSAN ALTIMA
2.5S EXTRA

\$1,000

IN NO-CHARGE
OPTIONS



\$0 DOWN
ALSO AVAILABLE

\$289

per month lease for 48 months
with \$3,950 down or equivalent trade.*
INCLUDES DESTINATION AND DELIVERY.
M.S.R.P. \$25,298

Altima 2.5 S EXTRA adds \$1,000* in No-Charge Options: • 16" Alloy Wheels • 8-Way Power Driver's Seat • Dual Illuminated Vanity Mirrors • Steering-Wheel-Mounted Audio Controls • Speed-Sensitive Volume Control • Trip Computer & Outside Temperature Gauge • Anti-Theft System • And More...

Altima 2.5 S comes equipped with these standard options: • 175-HP 2.5-Litre DOHC Engine (V6 available) • Auto On/Off Headlights • Automatic Transmission • Variable Intermittent Wipers • Remote Fuel Lid Release • Cruise Control • Air Conditioning • Power Heated Outside Mirrors • Power Door Locks • Power Windows with Driver's Side Auto Up/Down • Remote Keyless Entry System • 100-Watt CD with AM/FM Audio System (w/6-speakers) • Engine Immobilizer Key System • And Much More...

\$0 DOWN
ALSO AVAILABLE



THE NEW 2004 SENTRA

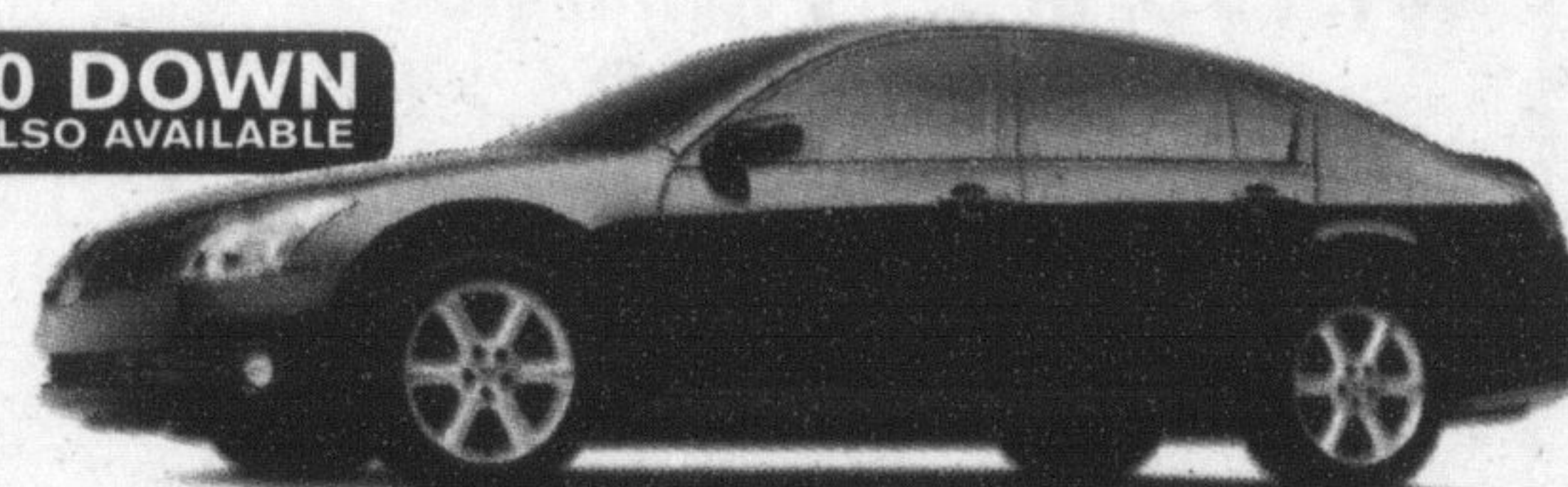
Financing as low as **2.8%**

\$198 per month lease for 48 months
with \$1,599 down or equivalent trade.*
INCLUDES DESTINATION AND DELIVERY.

0 security deposit

• 126-HP 1.8-Litre DOHC Engine • 15" Wheels • Full Wheel Covers • 8-Way Driver's Seat • Air Conditioning • Dual Remote Outside Mirrors • Remote Trunk and Fuel Lid Release • 60/40 Split Folding Rear Bench Seat • Front Disc Brakes • Rack and Pinion Power Steering • 100-Watt CD with AM/FM Audio System • Centre Console Armrest • Child-Proof Rear Door Locks • Front Door Map Pockets • Rear Window Defroster • Low Washer Fluid and Fuel Warning Light • And Much More...

\$0 DOWN
ALSO AVAILABLE



THE NEW 2004 MAXIMA

\$449 per month lease for 48 months
with \$3,800 down or equivalent trade.*
INCLUDES DESTINATION AND DELIVERY.

• Award-Winning 265-HP 3.5-Litre DOHC V6 Engine • 18" Alloy Wheels • 4-Wheel Power Disc Brakes • ABS • Heated Front Seats • Fog Lights • SkyView™ Roof • 8-Way Power Driver's Seat • Auto Dimming Rear View Mirror • 60/40 Split Folding Rear Seats • Bose® Audio System with 6-Disc In-Dash CD Changer (320-Watt with 8 Speakers) • Dual Zone Automatic Climate Control • Front and Curtain Side-Impact Airbags • Power Windows, Locks and Heated Mirrors • Steering-Wheel-Mounted Audio Controls with Speed-Sensitive Volume Control • 6.3" LCD Monitor • And Much More...



\$0 DOWN
ALSO AVAILABLE

INTRODUCING THE
NEW 2004 PATHFINDER
LIMITED EDITION "CHINOOK"

ONLY AVAILABLE IN CANADA

\$399 per month lease for 48 months
with \$5,150 down or equivalent trade.*
INCLUDES DESTINATION AND DELIVERY.

• Award-Winning 240-HP 3.5-Litre DOHC V6 Engine • 4-Speed Automatic with Overdrive • "All-Mode" 4-Wheel Drive • Power Sliding Glass Sunroof (Auto Open/Close) • "All Terrain" 4-Wheel Anti-Lock Braking • 16" Alloy Wheels • 5,000 lb Towing Capacity • Fender Flares • Bose® Audio System with 6-Disc In-Dash CD Changer • 8-Way Adjustable Driver's Seat • Keyless Remote Entry System with Panic Alarm on Key Fob • Anti-Theft and Immobilizer Key System • "Chinook" Badging, Detailing and Numbered Plaque • Air Conditioning • Electronic Compass & Outside Temperature Display • Remote Rear Liftgate Glass Release • And Much More...

INTRODUCING THE
NEW
2004
QUEST

\$389

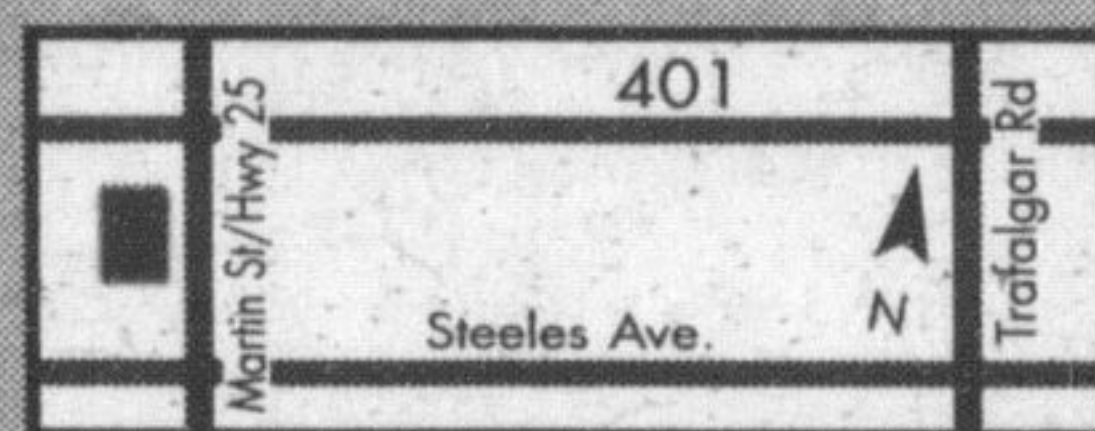
per month lease for 48 months
with \$4,900 down or equivalent trade.*
INCLUDES DESTINATION AND DELIVERY.

• Award-Winning 240-HP 3.5-Litre DOHC V6 Engine • 7-Passenger Seating • Longest Wheelbase and Widest-Opening Dual Sliding Doors in its Class • 4-Speed Automatic Transmission • 4-Wheel ABS • Solar Tinted Glass • 8-Way Driver's Seat • Groundbreaking Fold_Away™ 2nd and 3rd Row Bench Seats • 10 Cup Holders • Side Curtain Airbags (all-rows) • 150-Watt CD with AM/FM Audio System • Plenty of Storage and Bag Hooks • Traction Control System • Heated Front Seats • Tire Pressure Monitor System • Trip Computer • Available DVD and Navigation System • Available SkyView™ Roof • And So Much More...

\$0 DOWN
ALSO AVAILABLE

2003 MODELS ARE GOING QUICKLY - HURRY IN FOR TERRIFIC DEALS!

Milton's
NORTH END
NISSAN LTD.



610 MARTIN STREET, MILTON
905-878-4137

SALES DEPT. HOURS: Mon.-Thurs. 9:00 - 9:00
Fri. 9:00 - 6:00
Sat. 9:00 - 5:00



SHIFT

www.nissan.ca

All offers are only on accepted credit, available for a limited time, and may change without notice on new 2004 Altima S Extra (T4VG74 AE00), Sentra 1.8 VOP (C4LG54 BK00), Pathfinder "Chinook" (5CRG74 AE00), Quest 3.5 S (V6RG74 AA00) and Maxima SE (U4SG54 AA00). Offers cannot be combined with any other offers and include destination and delivery. *48-month lease on all 2004 Altima S Extra/Sentra 1.8/Pathfinder "Chinook"/Quest 3.5 S/Maxima SE 6.7/2.1/4.9/6.5/6.5% ALR. Leases based on a maximum of 96,000 km with excess charged at \$0.10/km. Zero security deposit, OAC, on 2004 Sentra leases. Dealer may sell/lease for less. Not all vehicles are available at all Dealerships. Licence, insurance, and taxes are extra and must be paid at the time of transaction. **\$1,000 in extra value reflects price difference between 2.5 S Convenience model versus 2.5 S Extra model. 12.8% purchase financing available for 36 months on 2004 Sentra. Financing examples: \$30,000 at 2.8% per annum for 36 months equals \$869.79 per month. COB is \$1,312.60 for an obligation total of \$31,312.60. #MSRP for model show \$49,100 (2004 Quest 3.5 SE (V6SG74 FN00)) #Based on comparison of 2004 Nissan Quest with 2003 FWD minivans. Vehicles not exactly as shown and used for illustration purposes only. Nissan, the Nissan Brand Symbol, "SHIFT," tagline and the Nissan model names are Nissan trademarks. See your Nissan Dealership or www.nissan.ca for more information.

USED VEHICLES

2002 NISSAN PATHFINDER SE

• V6 • 4x4 • 5 spd • Moonroof • Fully loaded incl. 6 disc changer

Sale Price:
\$29,990



1999 PONTIAC GRAND AM SE

• V6 • Auto • Loaded • Only 93,000km

Sale Price:
\$9,995



1999 TOYOTA COROLLA

• 4dr • Auto • Air • Stereo • Great reliability & economy

Sale Price:
\$11,380



1995 NISSAN QUEST

• V6 • Auto • 7 passenger • Fully equipped • Mint condition

Sale Price:
\$8,990



ALL USED CARS INCLUDE WARRANTY