

Milton team raises \$10,500 in walk in support of breast cancer research

Kelly Clayton is still recovering from the 60-km walk she completed September 20 to 21 in the Weekend to End Breast Cancer walk.

"Walking 60 km is something I've never done before. It takes a toll on your body," she said.

Ms Clayton was part of a four-woman Milton team that participated in the Toronto walk. She raised \$2,095, which will go toward breast cancer research at Princess Margaret Hospital, an

international leader in the fight against cancer.

Ms Clayton's team — which also included Nancy Van Dorp, Kim Bagen and Lianne Krane — raised more than \$10,500.

"The last 5 km going into Exhibition Place were grueling. You get the adrenaline kicking in at that point," she said.

Although the weekend was "emotionally draining," Ms Clayton said it was "wonderful."

Ms Clayton said she lost a family member to breast cancer, and, at the age of 28, she's "among the age group that is most often misdiagnosed or simply missed in regards to breast cancer diagnosis because people think that women in their twenties are too young to get breast cancer."

Teens raise \$4,000 for cancer research

Two Milton teens raised more than \$4,000 for the Weekend to End Breast Cancer walk September 19 to 21.

Robin McKee, 16, attends Milton District High School and Jesse Rehill, 18, has just started college.

The pair began collecting donations for the 60-km walk about five months ago.

More than 5,000 men and women participated in the Toronto walk, including several Miltonians. Money raised will go toward cancer research at Princess Margaret Hospital.

OFFICE TEAM LEADER

Stevens is a fast growing human resource company specializing in Human Resources, Staffing, Professional Search and Recruitment and Training and Consulting.

This exciting position is available in our Milton location. The successful candidate will have completed one or two years of college with a Business diploma. Must have experience and a strong drive in sales and marketing; supervisory experience; and excellent communication and interpersonal skills.

Must be proficient in MS Word and Excel. Duties to include maximizing the sales revenue, customer satisfaction and supervision of branch employees. Position offers a comprehensive benefit package.

If you are a self-motivated individual with the desire to grow with an aggressive company, please send your resume and cover letter to:

Stevens.

The boutique of the staffing industry

Stevens Resource Group Inc.

Julie Baker, Staffing Division Manager

Corporate Office

496 Adelaide Street

Woodstock, ON N4S 4B4

Fax: 519-421-0237

Email: jbaker@stevensresourcegroup.com

www.stevensresourcegroup.com

We appreciate all applicants. However, only those selected for an interview will be contacted.

Weekend SPOTLIGHT *on homes*



THE CHARM OF CENTURY - 3 ACRES Wonderful long driveway leading to a 4 bdrm home, large eat-in kitchen, dining rm with authentic tin wainscotting, hardwood floors. Wrap-around verandah, pretty views. 3 bay driveway, separate stone outbuilding. 12 min. to 401. \$384,000. Martha Summers*. www.marthasummers.ca. email: msummers@idirect.com



JOHNSON ASSOCIATES HALTON LTD., REALTOR
Martha Summers, Sales Representative 905-877-5165

Johnson Associates
HALTON LTD., REALTOR



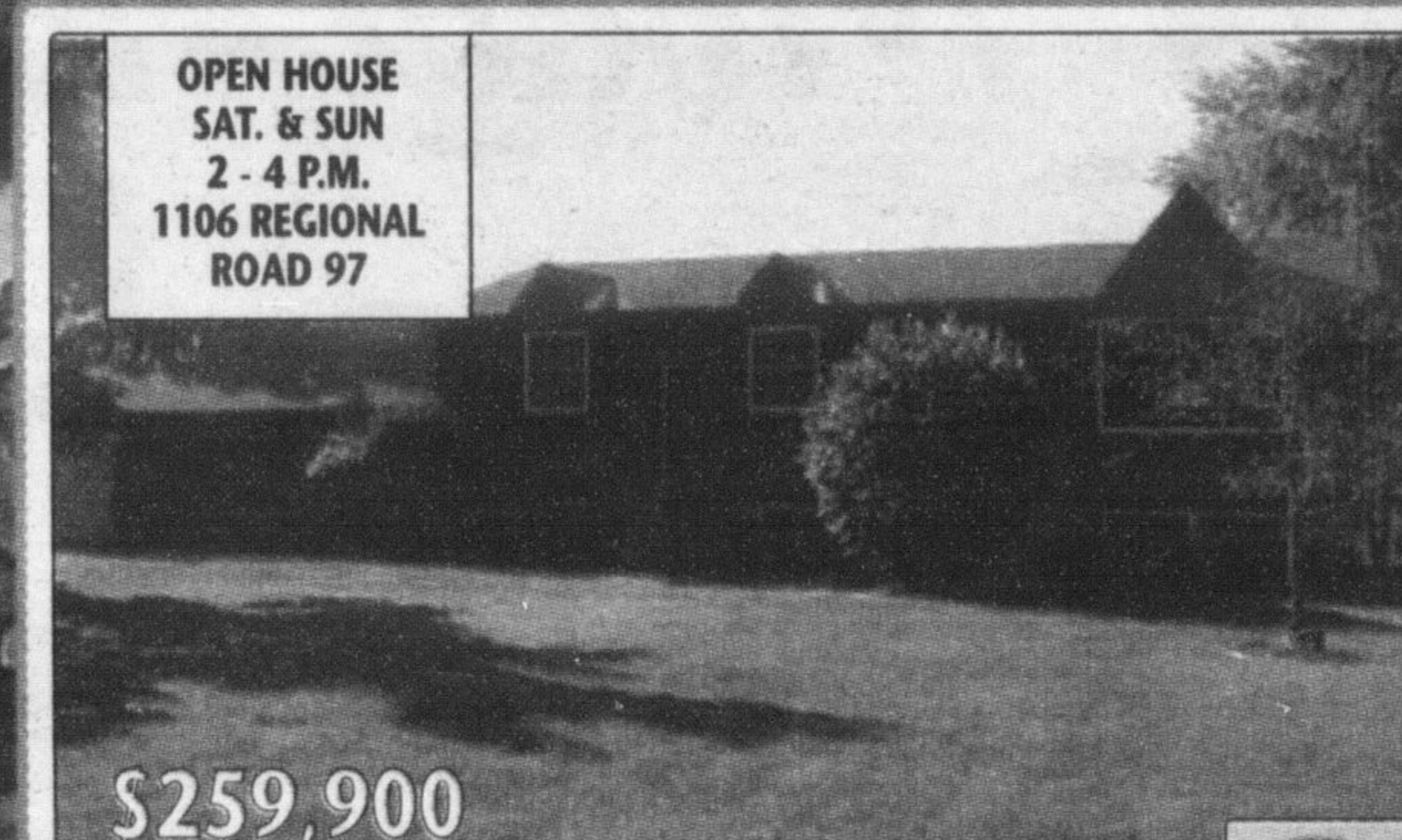
\$369,900

RARE HIGHSIDE DRIVE BEAUTY! Don't miss out on this rare beauty in a prized area of Milton! 4 generous bdrms, 3 bathrms, inviting sunrm, cozy groundlevel fam. rm. w/ f.p., and upgraded to the nines!! You'll love the huge yard (146'x66' lot), and it's fully fenced too! Mature trees, perennial gardens and shrubs galore. Don't delay or it will be SOLD! Visual Tour @ AllMiltonHomes.com



COLDWELL BANKER HOME & FAMILY REALTY
Chris Newell, Sales Rep. 905-878-4444

COLDWELL BANKER
HOME & FAMILY REALTY



OPEN HOUSE
SAT. & SUN
2 - 4 P.M.
1106 REGIONAL
ROAD 97

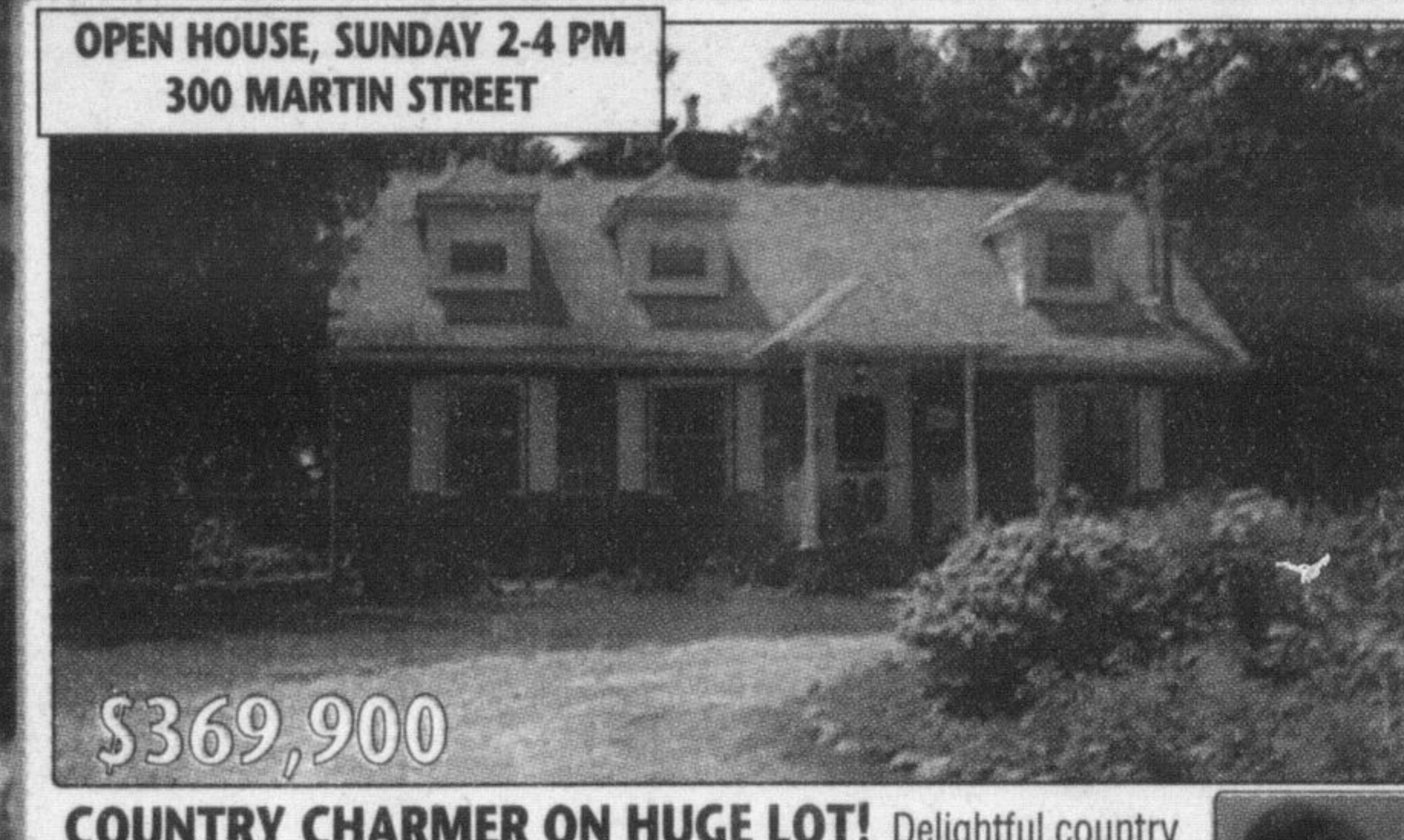
\$259,900

1106 REGIONAL ROAD 97 Remarkable package!! Great Value. Location: Freilton-commuter friendly. Lot: well groomed, fenced 1/2 acre. Home: Upgraded & lovingly maintained. • Cathedral ceilings in the liv & din rooms • Oak kitchen with ceramics • 3 BRs • 2 updated baths • Rec rm with woodstove • Home theatre with parquet hardwood floors • Oversized double garage • **DON'T MISS OUT!!**



RE/MAX GARDEN CITY REALTY INC
Bob Veevers, Assoc. Broker • 905-333-3500 or 905-689-1717

RE/MAX



\$369,900

COUNTRY CHARMER ON HUGE LOT! Delightful country home set well back on a private 80 x 210 ft. lot, within walking distance of town! Fabulous 2-storey addition features gorgeous custom-built pine kitchen, main floor family room with fireplace, large separate dining room, main floor laundry, and a master bedroom retreat with wood burning fireplace. \$369,900. For an appointment to view, please call Cheryl.



ROYAL LEPAGE REAL ESTATE SERVICES LTD., BROKER
Cheryl Smith, Sales Representative 905-845-4267

ROYAL LEPAGE
Royal LePage Real Estate Services Ltd. Broker



**Tired of Empty Promises
and Empty Tanks?**

With 20 Years Experience, We Know What
Customer Service Means To You!

AUTOMATIC DELIVERY OF FURNACE & STOVE OIL

SERVING HALTON & PEEL REGIONS

Give us a call today... Experience the difference!

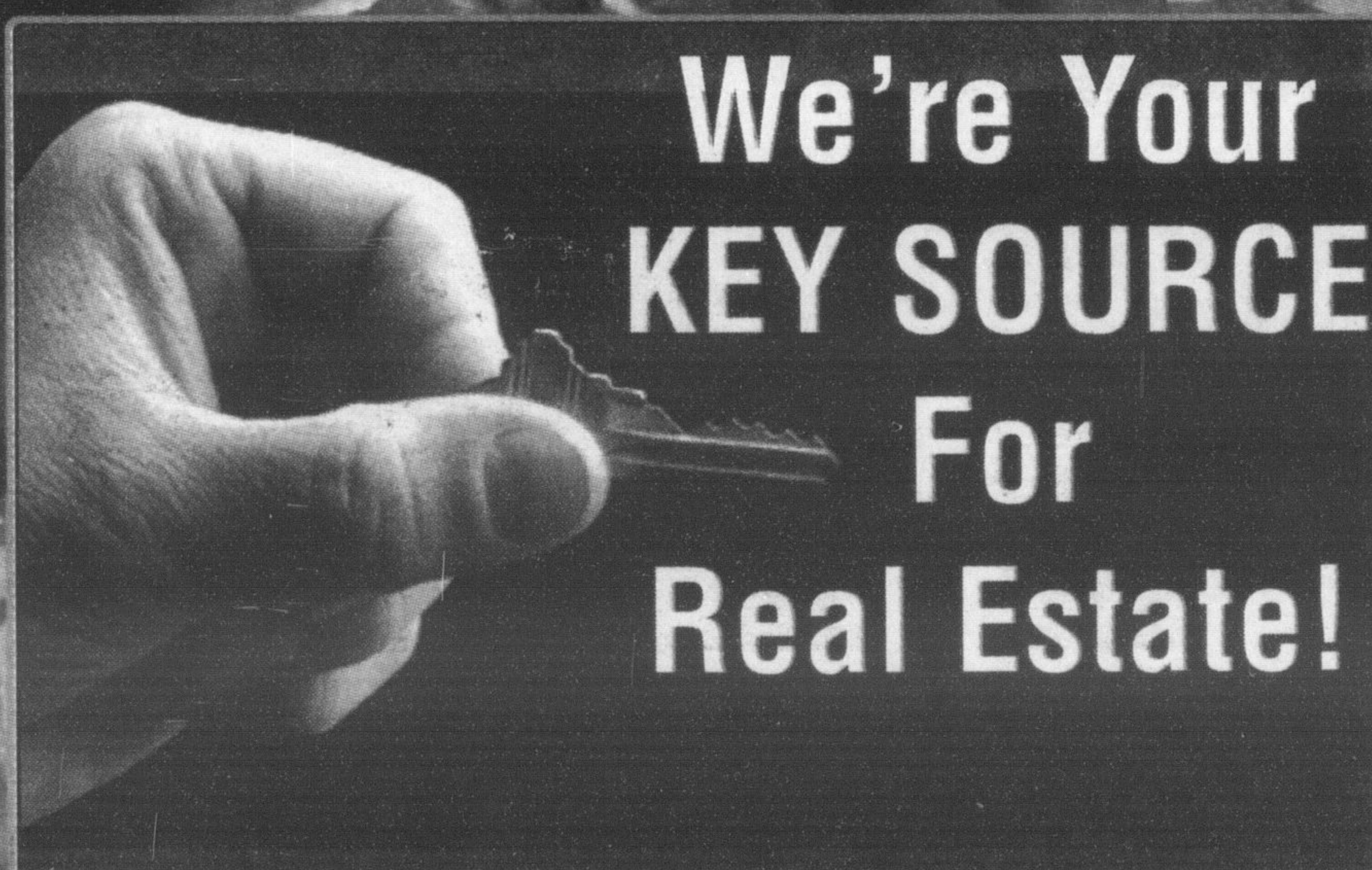
**JOHNSTON
PETROLEUMS**

Independent Supplier of Quality Shell Furnace Oil,
Stove Oil, Gasoline & Diesel Fuels

32 Steeles Ave., Unit 15 Milton, Ontario

(905) 878-4188

888-284-9937



**We're Your
KEY SOURCE
For
Real Estate!**

See our Real Estate section in Tuesday's Canadian Champion for the latest real estate news. In addition to our residential and commercial listings, we offer home improvement features, advice on buying and selling a home, recipes and more.

The Canadian
Champion

Call Diane Wolstenholme
905-878-2341 ext.224