

## 44 candidates to run in election

The registration desk is closed and the nominations are in for the fall civic election.

The deadline to register for the November 10 municipal election was 5 p.m. Friday, but candidates had until 5 p.m. yesterday to withdraw.

As of press time yesterday, a total of 44 candidates — vying for mayor, local and regional councillors, regional chair and school board trustee positions — registered for the election.

By comparison, in the 2000 local election, a total of 24 candidates registered.

Broken down, there are six candidates running for mayor; seven candidates for Ward 1; seven can-

didates for Ward 2; four candidates for Ward 3; seven candidates for Ward 4; two candidates for wards 2 and 4 regional councillor; two candidates for trustee with the Halton Catholic District School Board; two candidates for trustee with the Halton District School Board, those being Paul Tate of Sunnyvale Crescent and John McTavish of Fourth Line, R.R. 1.

Incumbent Barry Lee has been acclaimed Wards 1 and 3 regional councillor.

Micheline Wylde, from Hamilton, has registered for trustee for the Le Conseil Scolaire Publique de District du Centre-Sud-Ouest (French public school board), which includes Halton.

There are no nominations for the Le Conseil Scolaire de District Catholique du Centre-Sud (French Catholic school board), Halton trustee.

Those interested in this position must register with the City of Burlington tomorrow from 9 a.m. and 5 p.m. The registration fee is \$100.

If there are no nominations for the position, there's a process to fill it by appointment or a by-election.

As for regional chair, there are five candidates. The most recent to enter the race include Brian Burton of Oakville, Rob Heaton of Glen Williams and Ric Morrow of Georgetown.

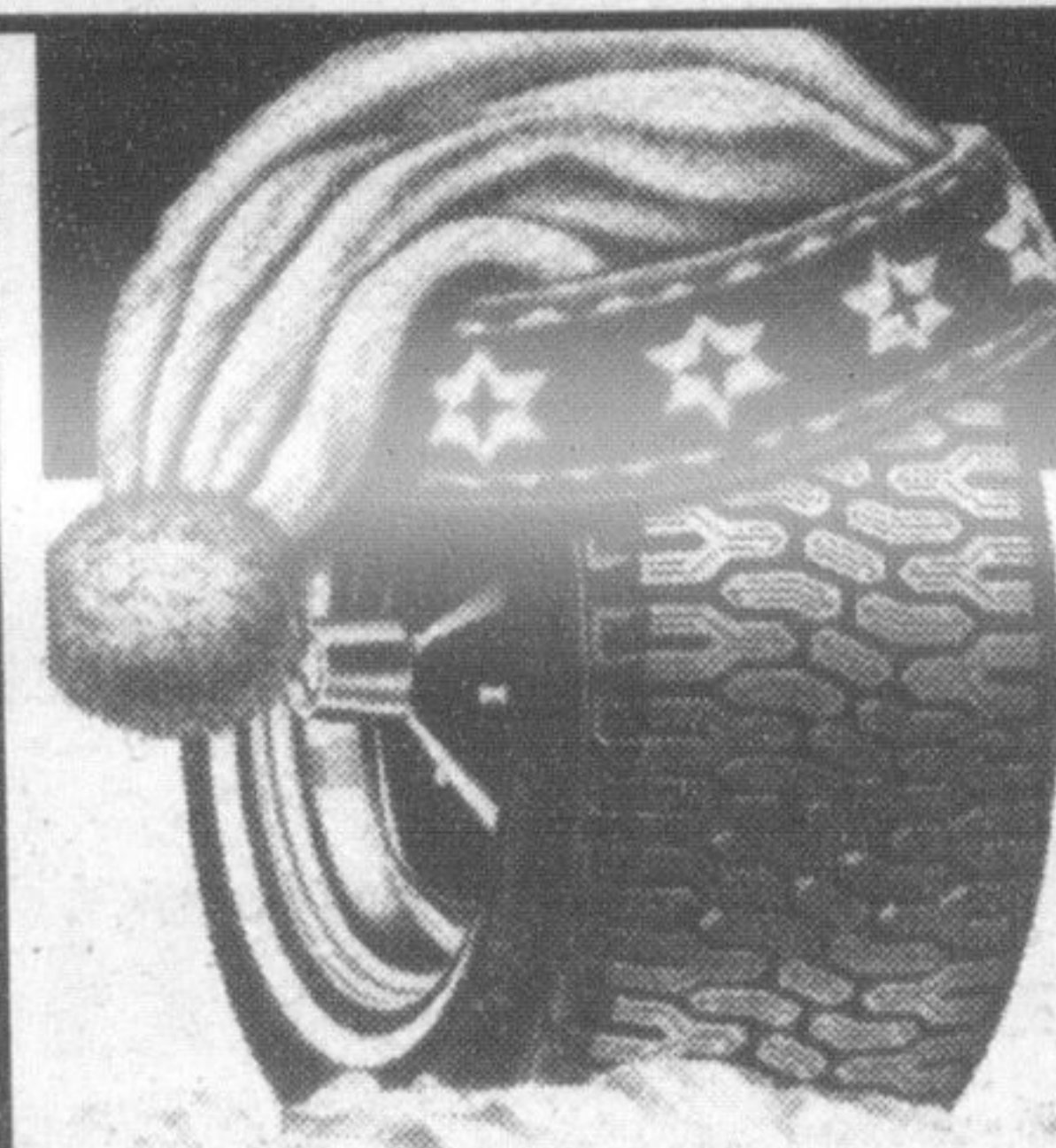
## Weapons charges laid in incident

A carnival worker who was in town for the fall fair faces a number of weapons charges after he allegedly pointed a rifle at a co-worker Wednesday evening.

The 26-year-old male victim told police he managed to run away when the rifle was lowered during the

incident, which occurred at the Milton Fair Grounds at about 10 p.m.

A 43-year-old man of no fixed address was charged with uttering threats, possessing a weapon, pointing a firearm and unlawful possession of a firearm.

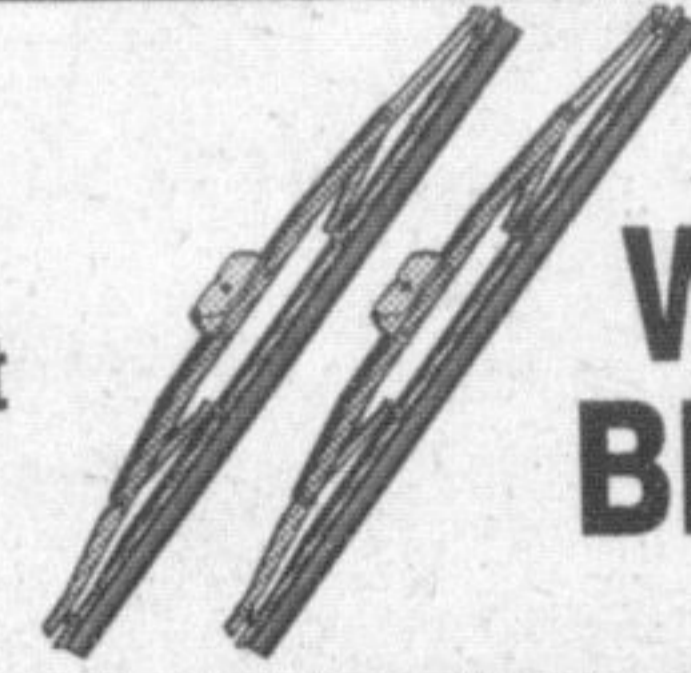


### HOLD ON TO YOUR HAT

Because of the already high demand for **ICE TIRES** we recommend you reserve your winter tires **NOW!**

### It's Time to Winterize! TUNE-UP NOW!

In Stock...  
Original  
equipment  
style & fit



**WIPER  
BLADES**



Accredited Test\*  
& Repair Facility

\*An official mark of the Province of Ontario used under license.

## Brian's

Auto Repairs & Tire Centre  
For all Your Auto Needs!

390 Ontario St. N. Unit #1, Milton

HOURS: Mon. - Fri. 7-5, Sat. 8-12 except long weekends

**875-1522**



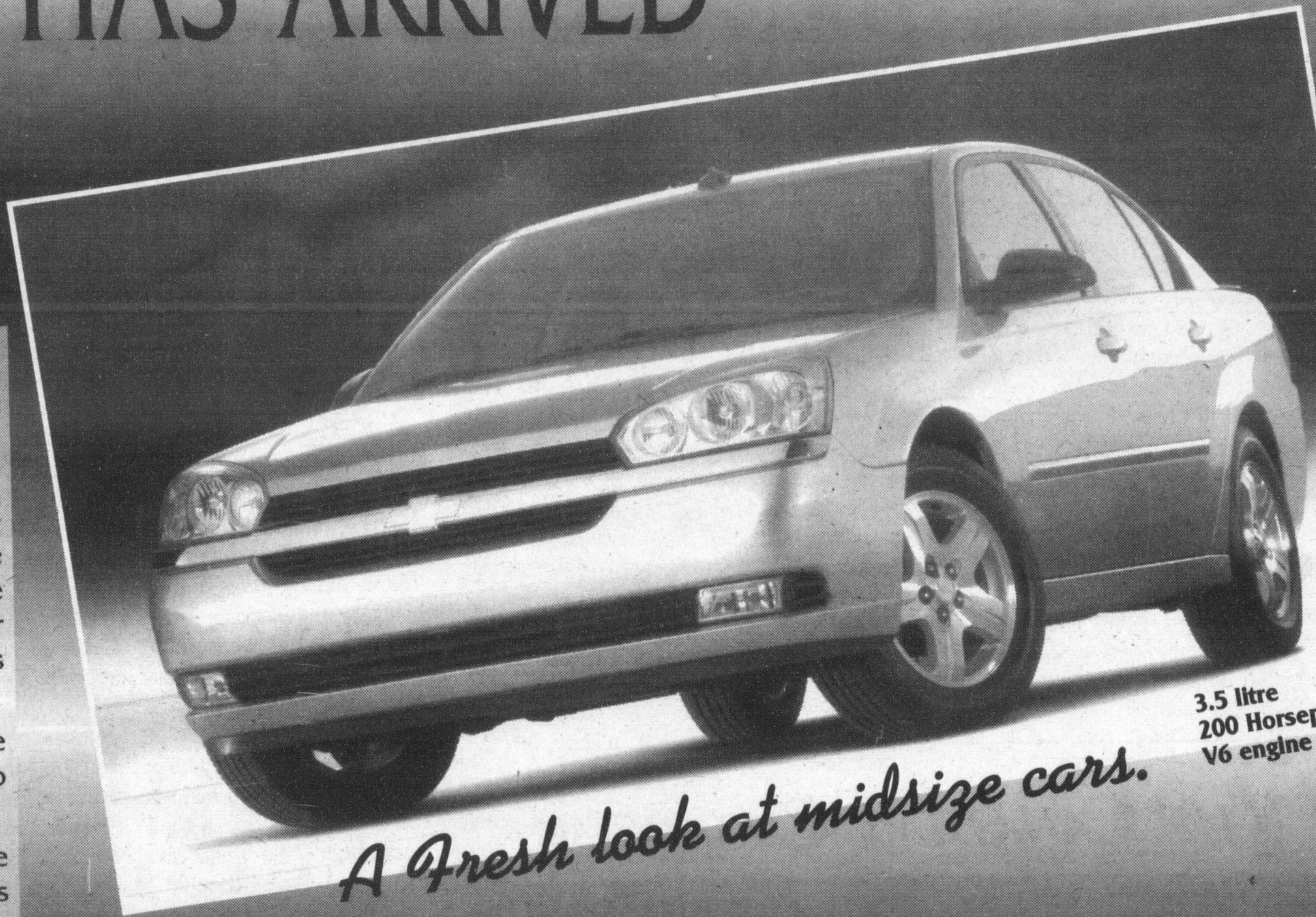
# ALL NEW 2004 CHEVROLET MALIBU HAS ARRIVED

The 2004 Malibu is a fun, versatile mid-size sedan that adapts to an individual's needs. Malibu has the ability to adapt to individual driver comfort.

Power driver seat height adjuster, tilt/telescopic steering wheel and adjustable brake and accelerator pedals can be adjusted to fit varying needs. No other mid-size sedan offers all these features together.

A segment-first factory-installed remote vehicle-start package allows the driver to start the car from inside the house.

The 2004 Malibu Sedan is designed to be among the safest mid-size passenger cars on the market. It is designed to achieve frontal and side impact ratings that are among the best of any cars in the mid-size segment.



*A Fresh look at midsize cars.*

3.5 litre  
200 Horsepower  
V6 engine

Now in stock - Drop by for your personal test drive today!

## RICHARDSON

## CHEVROLET-OLDSMOBILE

HWY. 25 S. AT DERRY RD., MILTON

GOOD CLEAN  
TRADE-INS  
WELCOME!

# 878-2393

Main St.	
	Hwy 25 Ontario St.
Derry Rd	RICHARDSON CHEVROLET-OLDSMOBILE