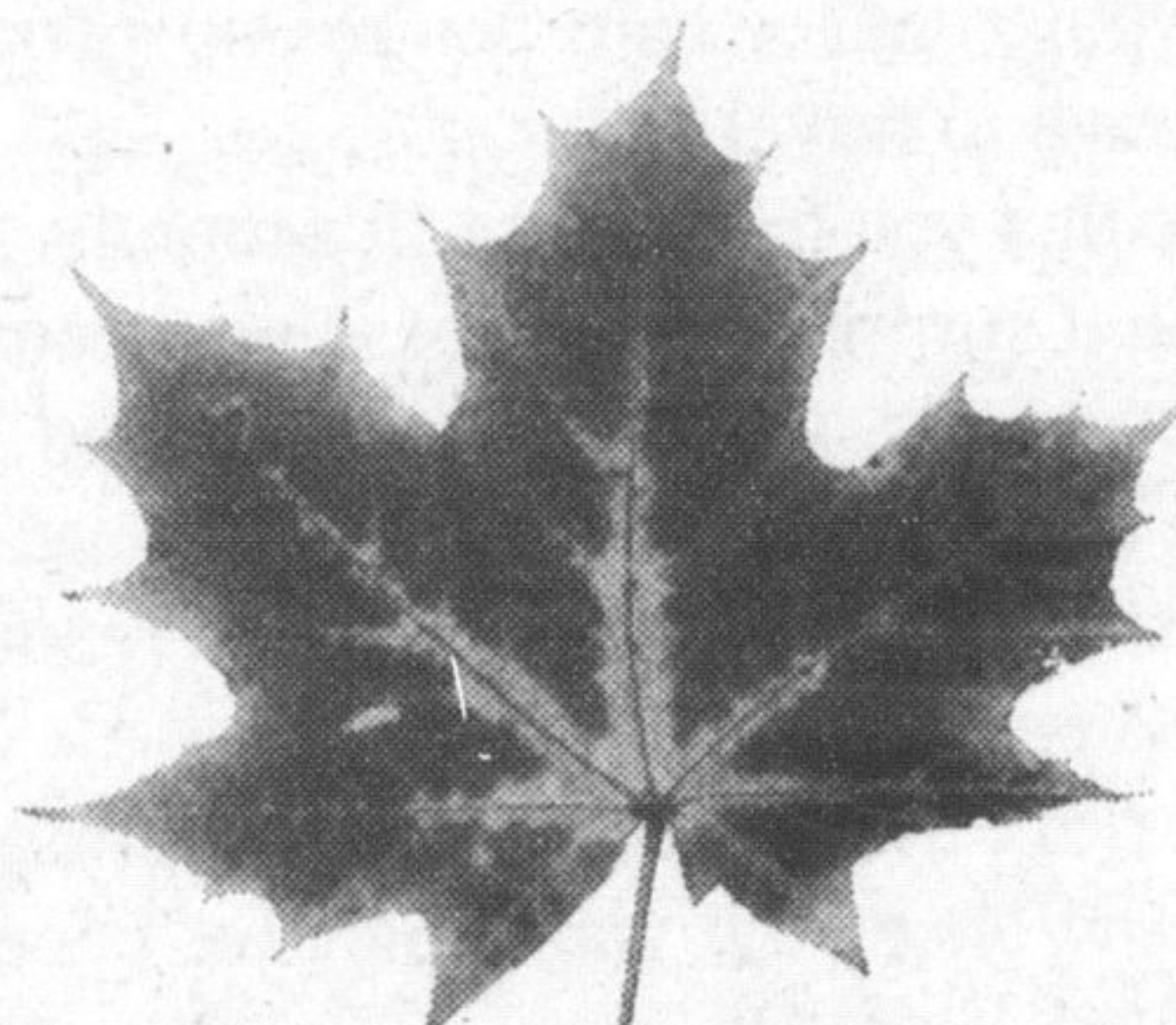
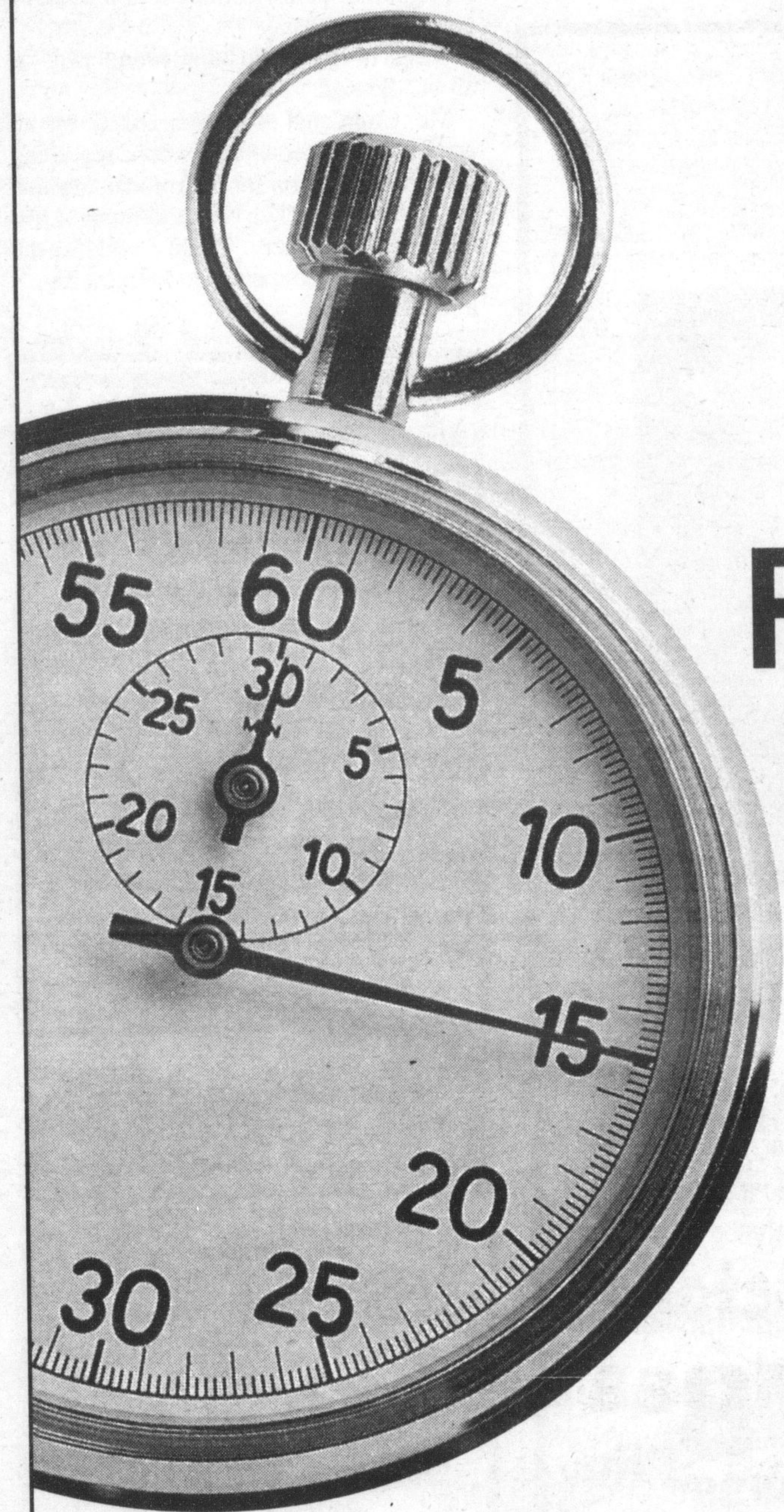


GET MORE.



CANADA CLEARANCE WIDE

THE END IS NEAR. FORTUNATELY, SO IS YOUR GM DEALER.

LEASE DEALS END SEPTEMBER 30TH

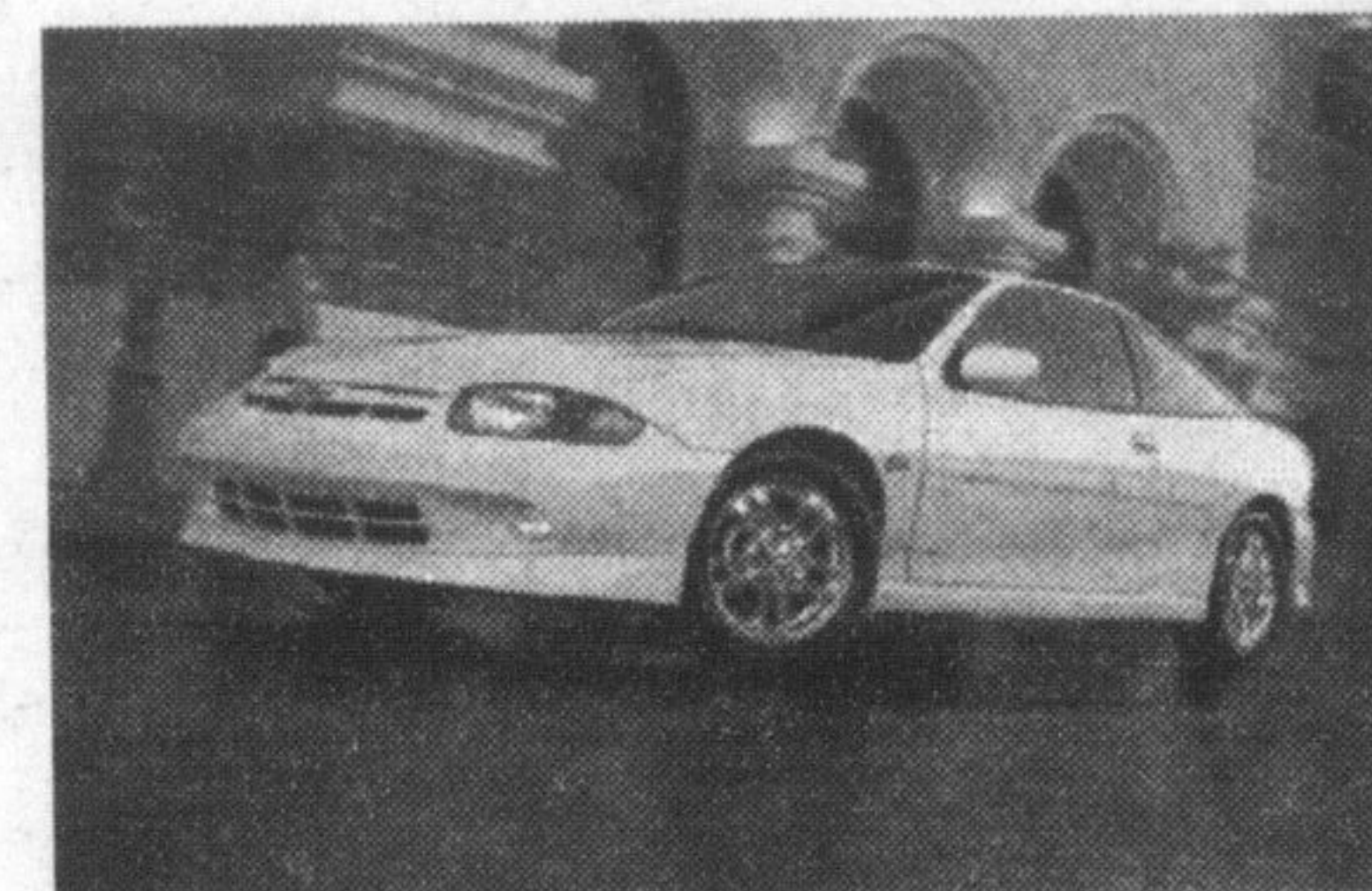
0%

PURCHASE FINANCING FOR 60 MONTHS[‡]

PLUS AN EXTRA

\$1000 off

WHEN YOU BUY, FINANCE,
OR LEASE VIRTUALLY
ANY NEW 2003.*



For the latest information, visit us at gmcanada.com, drop by your local Chevrolet • Oldsmobile or Pontiac • Buick • GMC Dealer or call us at 1-800-GM-DRIVE. *General Motors will provide the dealer with a credit of \$1,000 inclusive of applicable taxes. Such credit will be included in the relevant SMARTLEASE monthly payment, purchase price or cash purchase price at dealership. †0% purchase financing on approved GMAC credit only. Down payment and/or trade may be required. Monthly payment and cost of borrowing will vary depending on amount borrowed and down payment/trade Example: \$10,000 at 0% APR, the monthly payment is \$166.67 for 60 months. Cost of borrowing is \$0. Total obligation is \$10,000. Discounts or other incentives may be available where consumers opt for a cash purchase price offer. By selecting the purchase financing offer, consumers may be foregoing such discounts and incentives which may result in a higher effective interest rate. Offer does not apply to 2003 Saturn. ‡Offer does not apply to 2003 Sierra/Silverado Regular Cab 2500/3500 (non C6P), 2003 Sierra/Silverado Extended Cab 2500/3500 (non C6P), 2003 Sierra/Silverado Crew & Chassis Cabs 2500/3500 and 2003 Sierra/Silverado 3500 HD Chassis Cabs (Carryover Style). †‡Offers apply to virtually all 2003 new or demonstrator models. Offers do not apply to 2003 models of Saab, Isuzu, Corvette, Cadillac, Hummer, Full Size Savana/Express, Express LT-Y91/Savana SLT-Y91, Full size vans-Cargo/Cutaway and 2004 Grand Prix. Offers apply to qualified retail customers in Canada. Dealers are free to set individual prices. Dealer trade may be required. Limited time offer which may not be combined with other offers. See your dealer for conditions and details.