

Dateline

Dateline is a free listing of coming events only. The column is available to local community groups to assist in promoting their future events. Only charitable or non-profit community groups may use this service. We can only guarantee one issue of publicity closest to the date of the occurrence although more insertions are possible if demand is low.

Notices for Dateline should be handed in at the office of The Champion, 191 Main St. E., mailed to P.O. Box 248, Milton, Ont., L9T 4N9, faxed to (905) 878-4943, or e-mailed to miltone@haltonsearch.com. The final deadline is noon Friday for Tuesday's edition and noon Wednesday for Friday's edition. Dateline items aren't accepted by telephone.

Friday Aug. 8

The Milton Seniors' Activity Centre, 500 Childs Dr., holds a **summer barbecue** from 11:30 a.m. to 12:45 p.m. The \$5 cost includes a hamburger or sausage, salad, dessert and a beverage. Call (905) 875-1681 if you plan to attend.

The Milton Seniors' Activity Centre also holds its **Campbellville Evening Euchre Party** at the Lions Hall in Campbellville at 7:30 p.m. with keen competition and prizes. The cost is \$2.50. For more information, call (905) 875-1681.

Saturday Aug. 9

The churches of St. John's, Stewarttown and St. Stephen's in Hornby hold a joint **trunk sale** in their parking lots from 8 a.m. to 12:30 p.m. Vendors are welcome. The cost is \$10. For information or to register, call Don at (905) 866-4463,

Dave at (905) 824-6228 or Joan at (905) 877-5797.

Saturday Aug. 9 - 10

The Canadian Red Cross Society offers a standard first aid level 'C' **CPR course** at the north Halton branch, 100 Nipissing Rd. For information, call (905) 875-1459.

Tuesday Aug. 12

Improve communication and leadership skills with the **Milton Toastmasters**. Everyone is welcome to attend the meeting at the Royal Canadian Legion, 21 Charles St. (upper level), at 7:30 p.m. For more information, call Ross at (416) 953-9413.

Calling New Parents, a free program for parents and babies aged 6 months and younger, meets with a public health nurse to discuss par-

enting and infant care. The group meets at the Milton Community Resource Centre, 917 Nipissing Rd., from 1:30 to 3:30 p.m. For more information, call (905) 693-4242, ext. 7899.

Help for Parents, a parent support group, meets in Burlington. The non-denominational self-support group helps parents of children who are in trouble at home, at school or with the law, or who are abusive or taking drugs. The group is a member of the Association of Parent Support Groups in Ontario. For times and directions, call 1-800-488-5666 or visit www.apsgo.ca.

Milton District Hospital holds a **breastfeeding clinic** with a certified lactation consultant from 9:30 to 11:30 a.m. To make an appointment, call Jean Gallen at (905) 878-2383, ext. 7030.

The Art of Healthy Living holds a **parent support group** for parents of children who are
• see more DATELINE on page 21

NISSAN NATIONAL SALES EVENT

HURRY, ENDS SEPTEMBER 2ND



2003 PATHFINDER "CHILKOOT EDITION"
\$359 per month lease for 48 months with \$5,150 down.
 INCLUDES DESTINATION AND DELIVERY.

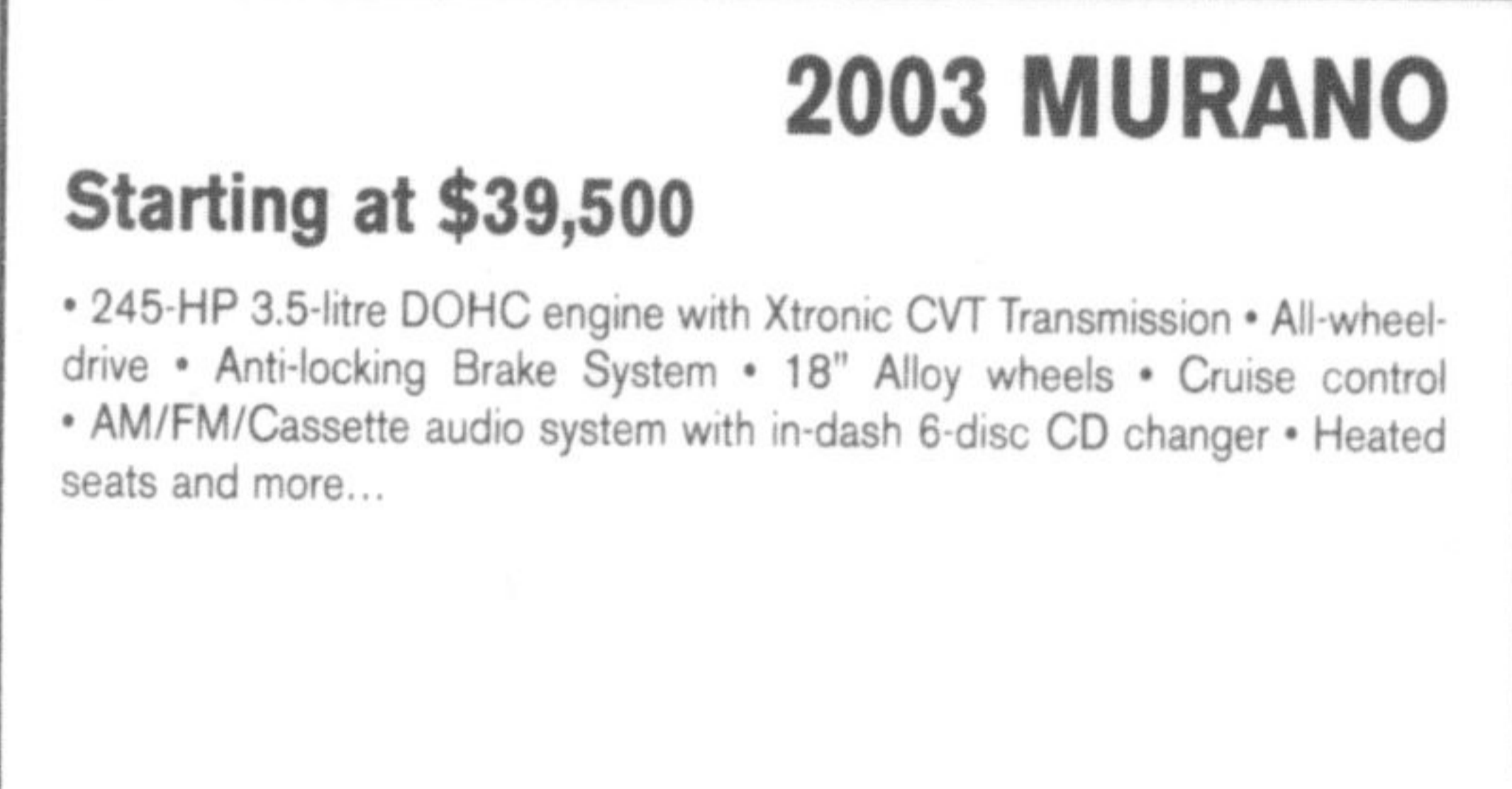
Or finance the purchase of your vehicle for **0.9%** for 36 months:
 • 240-HP 3.5-litre DOHC engine • 4-speed automatic with overdrive
 • "All-Mode" 4-wheel drive • 150-watt Bose® CD audio system with in-dash 6-disc autochanger • 8-way adjustable driver's seat • Air conditioning
 • Electronic compass & outside temperature display • Remote rear liftgate glass release • And much, much more...



2003 ALTIMA 2.5S
\$289 per month lease for 48 months with \$3,160 down.
 INCLUDES DESTINATION AND DELIVERY.

• 175-HP 2.5-litre DOHC engine • Air conditioning • AM/FM with CD audio system and 6 speakers • Power heated outside mirrors • 60/40 split rear seat w/lock • 8-way manual driver's seat • Tilt and telescope steering column
 • And much, much more...

0 SECURITY DEPOSIT AND 0 PAYMENTS FOR 90 DAYS ON ALL 2003 ALTIMA MODELS*



2003 MURANO

Starting at \$39,500

• 245-HP 3.5-litre DOHC engine with Xtronic CVT Transmission • All-wheel drive • Anti-locking Brake System • 18" Alloy wheels • Cruise control • AM/FM/Cassette audio system with in-dash 6-disc CD changer • Heated seats and more...



2003 XTERRA XE

\$338 per month lease for 48 months with \$4,600 down.
 INCLUDES DESTINATION AND DELIVERY.

• 180-HP 3.3-litre SOHC V6 engine • Power windows, mirrors, and door locks • Side step rails • Part-time 4-wheel drive system • Tubular roof rack with removable basket and wind deflector • Air conditioning • And more...



HURRY IN FOR LOW LEASE RATES AND FINANCING AS LOW AS 0.9% FOR 36 MONTHS ON REMAINING 2003 SENTRA AND MAXIMA MODELS.

ALSO FOR 2003 SENTRA & ALTIMA ENJOY \$0 SECURITY DEPOSIT (O.A.C.) OR NO PAYMENTS FOR THE FIRST 90 DAYS.*

THE NEW 2004 SENTRA

Starting at \$15,598**

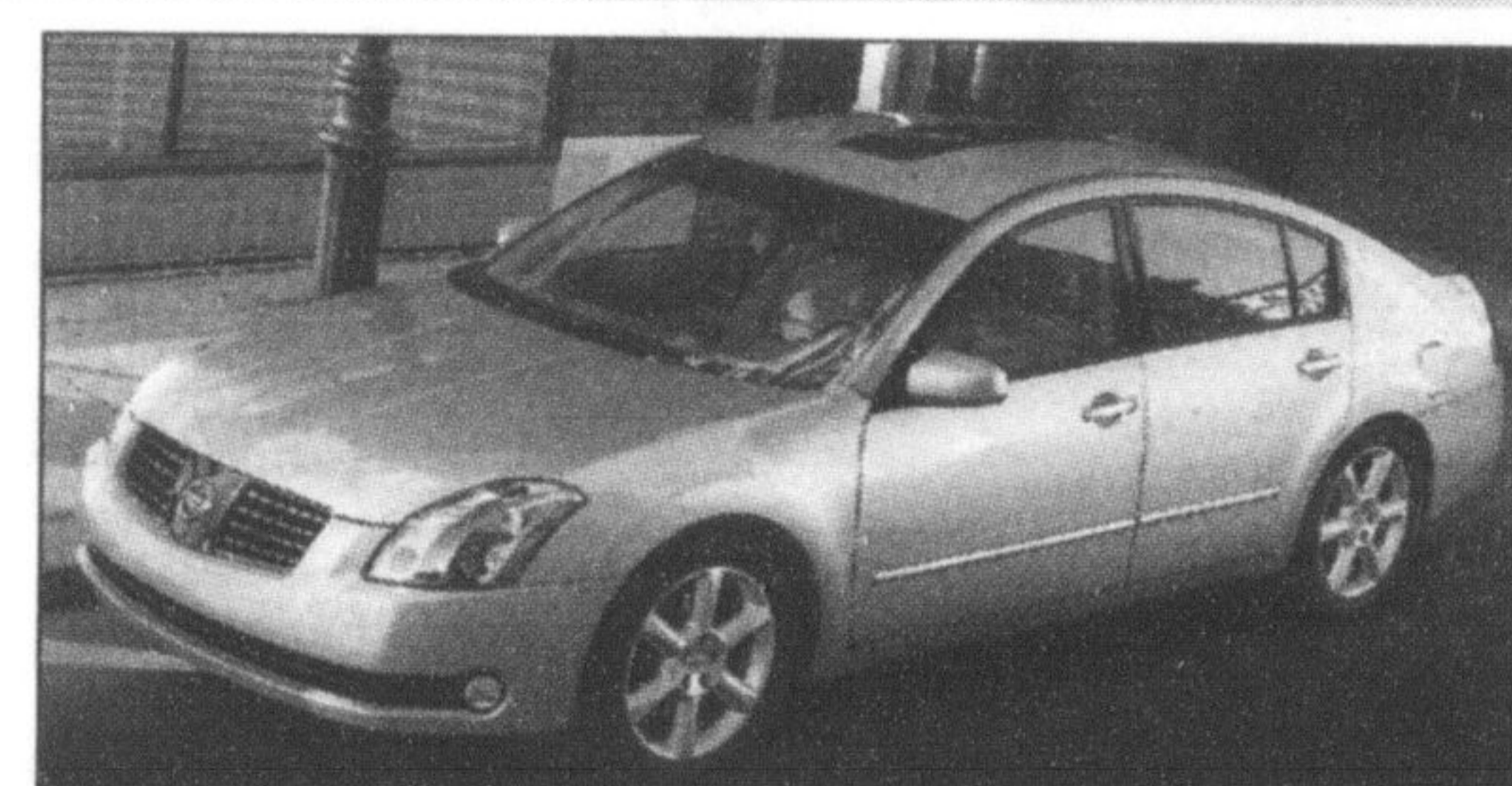
• 126-HP 1.8-litre DOHC engine • 15" Steel wheels • 8-Way manual driver's seat • Tilt steering • Dual air bags • 60/40 split folding bench seat • And much more...



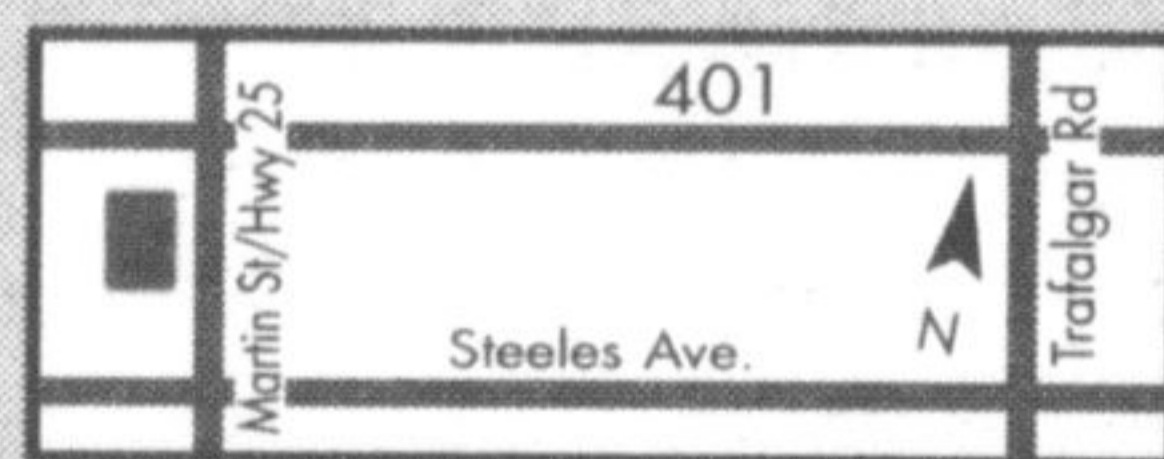
THE NEW 2004 MAXIMA

Starting at \$34,500**

• 265-HP 3.5-litre DOHC V6 engine • 18" Steel wheels • ABS • Halogen headlights • Skyview™ roof • 8-Way power driver's seat • Heated front seats • 8-speaker Bose® audio system • AM/FM cassette with 6-disc in-dash CD changer • And much more...



Milton's
NORTH END NISSAN LTD.



610 MARTIN STREET, MILTON
905-878-4137

SALES DEPT. HOURS: Mon.-Thurs. 9:00 - 9:00
 Fri. 9:00 - 6:00
 Sat. 9:00 - 5:00



SHIFT
www.nissan.ca

All offers are only on accepted credit, available for a limited time, and may change without notice on new 2003 Pathfinder "Chilkoot Edition" Automatic (5CRG73 AE00), 2003 Xterra XE (8CLG53 AAO0), 2003 Altima S (T4RG73 AE00), 2003 Murano and all 2004 Sentra/Maxima models. Offers cannot be combined with any other offers and except where otherwise noted include destination and delivery (Excluded in 2003 Murano, 2004 Sentra/Maxima MSRP (\$981/\$868/\$972) **MSRP for models shown; 2004 Sentra SE-R with Sport Package (C4SG74 RR00)/ 2004 Maxima 3.5 SE w/ option leather (U4SG54 LE00) \$24,398/\$37,200 Dealer may sell/lease for less. Not all vehicles are available at all Dealerships. License, insurance, and taxes are extra and must be paid at the time of transaction. † For 36 months finance 2003 Sentra/Maxima/Pathfinder at 0.9%. Financing examples: \$30,000 at 0.9% per annum for 36 months equals \$844.95 per month. COB is \$418.07 for an obligation total of \$30,418.07. ‡ First payment due 90 days after date of delivery on financed purchases on new 2003 Sentra. No interest for 90 days. *48-month lease on 2003 Altima S/Pathfinder Chilkoot Edition/Xterra XE manual 5.2%/3.9%/5.2% ALR. Leasee based on a maximum of 96,000 km with excess charged at \$0.10/km. If the cash purchase price are not taken, and the vehicle is financed, the effective interest rate is 3.86%/5.93% for Sentra/Maxima. Vehicles not exactly as shown and used for illustration purposes. Nissan, the Nissan Brand Symbol, "SHIFT" tagline, Z and Nissan model names are Nissan trademarks. See your nearest Nissan Dealership or www.nissan.ca for more information.

USED VEHICLES

1998 NISSAN QUEST

• 7 Passenger • Fully equipped • Quad seating • 70,000kms

Sale Price:
\$14,990



2000 VW JETTA GLX

• VR6 • 5spd • Leather • Roof • Loaded • Only 83,000kms

Sale Price:
\$19,980



2000 NISSAN PATHFINDER SE

• 4x4 • Auto • Moonroof • Loaded • Only 92,000kms

Sale Price:
\$22,990



1999 TOYOTA COROLLA

• 4dr • Auto • Air • Stereo • Only 93,000kms

Sale Price:
\$11,380



4.9% FINANCING & 90 DAYS NO PAYMENTS