

## Gori to represent party in election

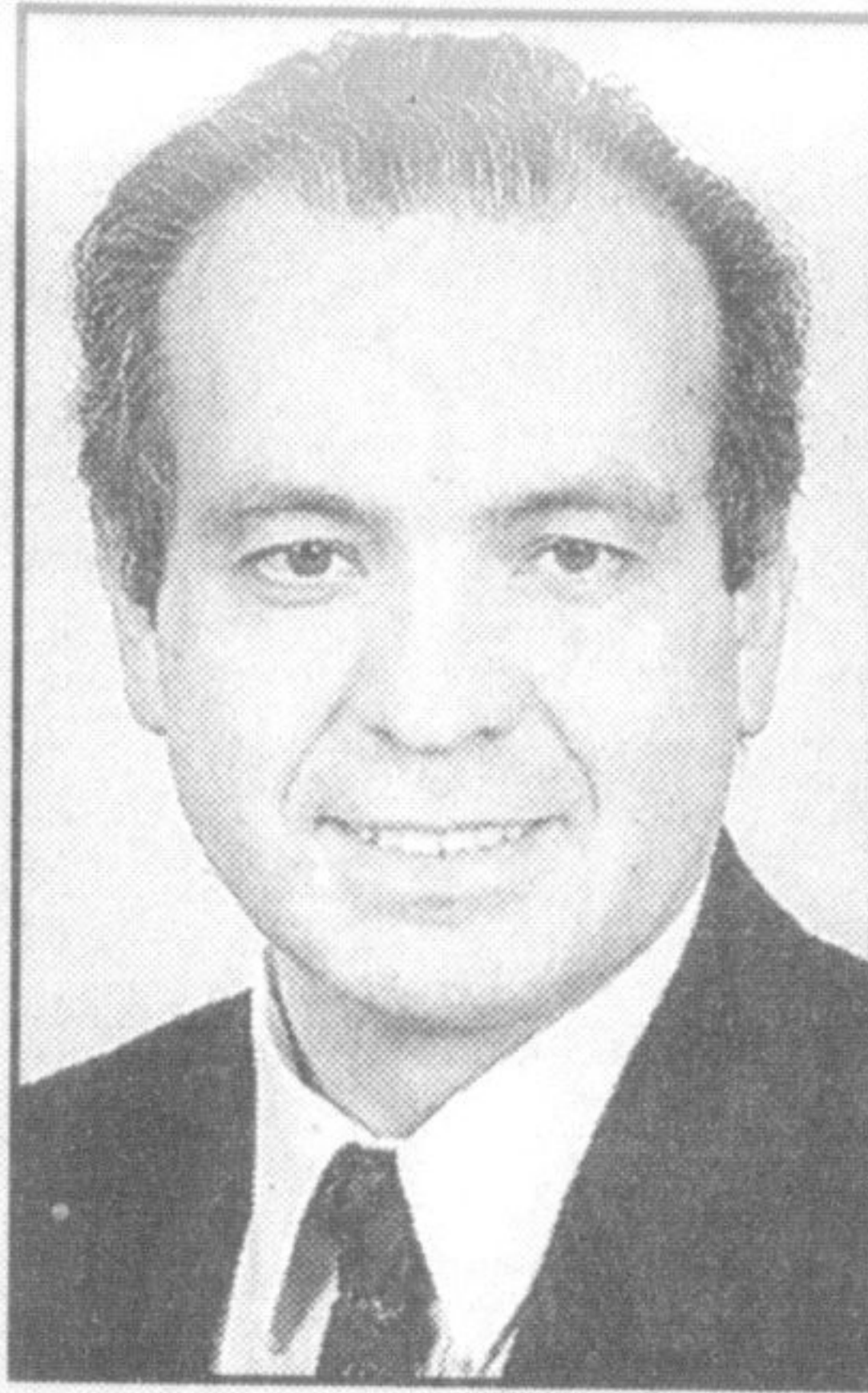
The Halton Constituency Office of the Family Coalition Party of Ontario has nominated Giuseppe Gori as its Halton candidate in the next provincial election.

Mr. Gori is also the party leader.

Mr. Gori ran in the 1995, 1990 and 1985 provincial elections.

In a news release he said the party will run about 50 candidates in the election.

An election date has yet to be set.



Giuseppe Gori

## Youth badly hurt in crash

A collision Thursday night between a Jeep and a tractor-trailer sent a 17-year-old Kilbride male to hospital with serious injuries.

The 7 p.m. crash occurred at Steeles Avenue and Fifth Line.

Police said the Jeep was pulling onto Steeles Avenue from the shoulder when it was struck by the tractor-trailer loaded with concrete pipe. The crash pinned the Jeep to the front of the truck and it was dragged about 150 metres before coming to a stop.

After an hour-long extrication by fire-fighters, the badly hurt teen was taken by air ambulance to Sunnybrook Medical Centre in Toronto.

The 71-year-old Homby man driving the transport truck wasn't injured.



Have your  
2 & 4 wheel  
alignment checked  
by our licensed  
technicians.



## QUICK LUBE SERVICE

We use  
**QUAKER STATE  
OIL & FRAM  
OIL FILTERS**

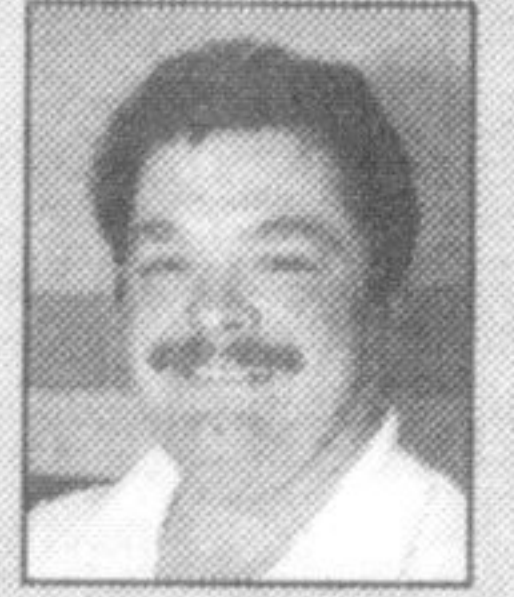


Accredited Test & Repair Facility

## Brian's

Auto Repairs & Tire Centre  
For all Your Auto Needs!

390 Ontario St. N. Unit #1, Milton 875-1522  
HOURS: Mon. - Fri. 7-5, Sat. 8-12 except long weekends



Watch for  
the  
2003  
Milton  
Community  
Guide

coming  
soon!



## CRUISE INTO SPRING

with our **DUO SPECIALS** in store

includes gas, lease, cart, duokit

**\$678**

Air Liquide  
310A Steeles Ave., Milton

**905-693-1211**

While quantities last. Participating locations only.



100 years. A pioneering inspiration

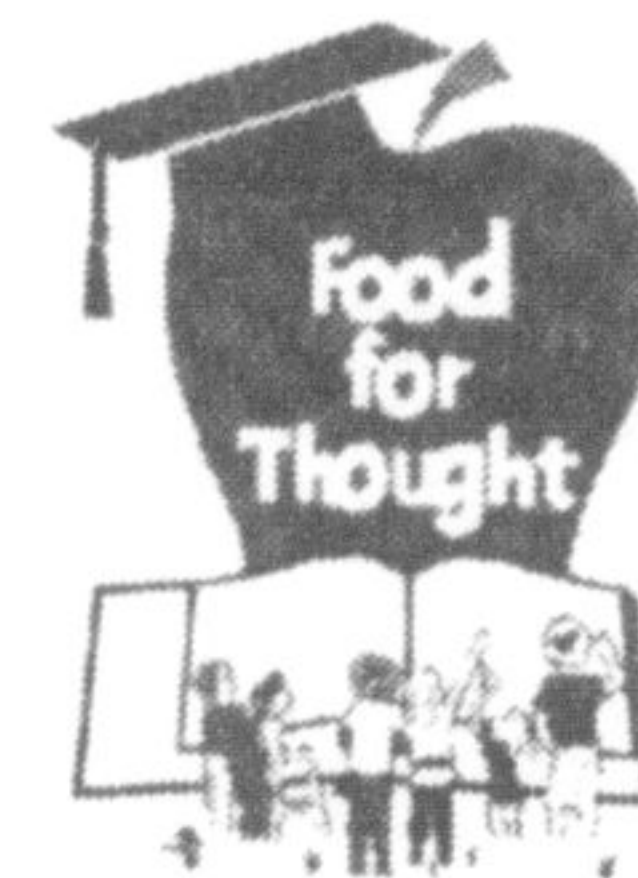
Industrial gases  
Welding products

www.airliquide.com



## Nutrition Notes

How can local business help?



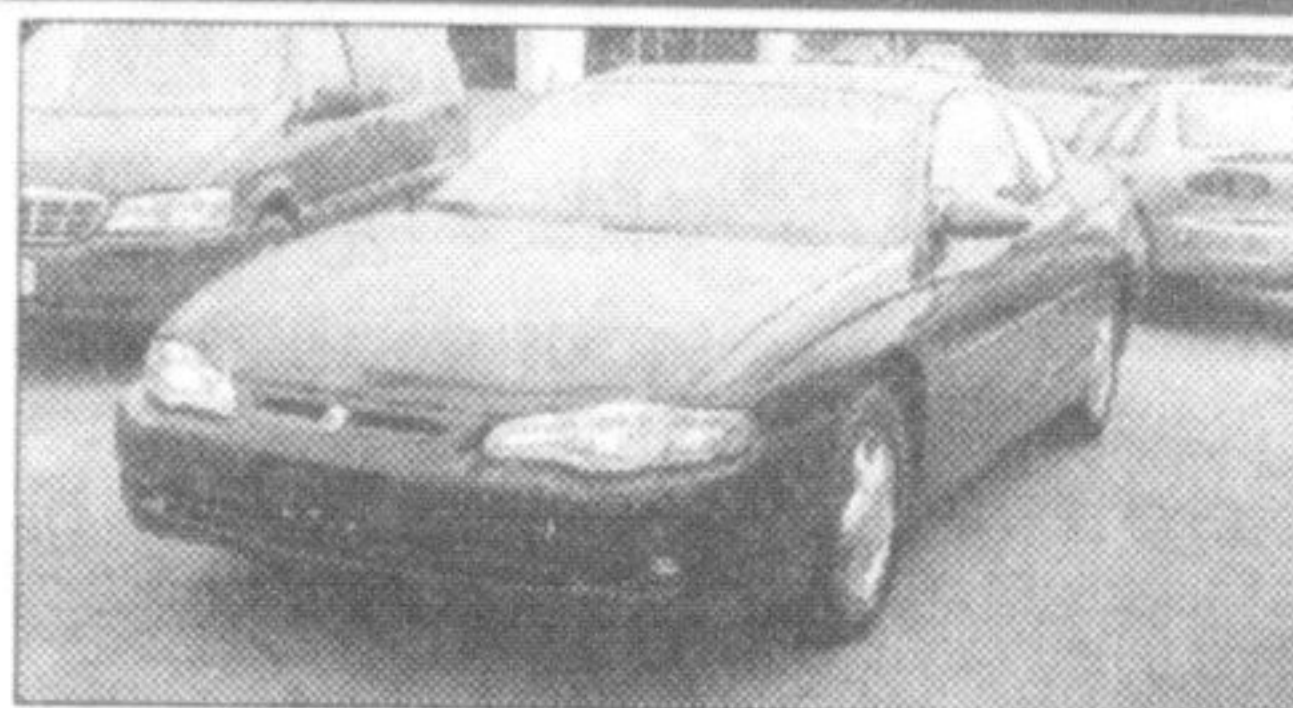
- Volunteer in a school nutrition program
- Make a financial donation
- Sponsor a program with a food donation
- Join the Halton Food for Thought partnership committee

Halton Food for Thought  
Contact Program Coordinator 905-845-5597 ext. 201  
foodforthought@cogeco.ca

# RICHARDSON

## QUALITY PICKS OF THE WEEK

### Holiday Ready - For Worry Free Driving!



**2000 CHEV MONTE CARLO SS**

Loaded, leather, P.moonroof, beautiful black on black, only 50,000 kms, 6 mth - 10,000 km P.T. Warranty.

#P2208

Only **\$22,995**



**2003 CHEV IMPALAS LS**

3.8 V6, dual zone air, pw, pl, tilt, cruise, p.seat, p.mirrors, cloth bucket seats, alarm wheels, only 22,000 km. Bal. of fac. warr.

#P2211

Only **\$22,995**



**2002 OLDSMOBILE ALERO GL**

3.4 V6, auto, air, tilt, cruise, pw, pl, p.seat, alum. wheels, only 27,000 kms, ruby red. Bal. of fac. warr.

#P2205

Only **\$16,995**



**2000 SATURN LS2**

V6, auto, air, pw, pl, tilt, cruise, p.mirrors, alum. wheels, hunter green, 6 mth - 10,000 km P.T. Warr.

#P2149

Only **\$13,995**

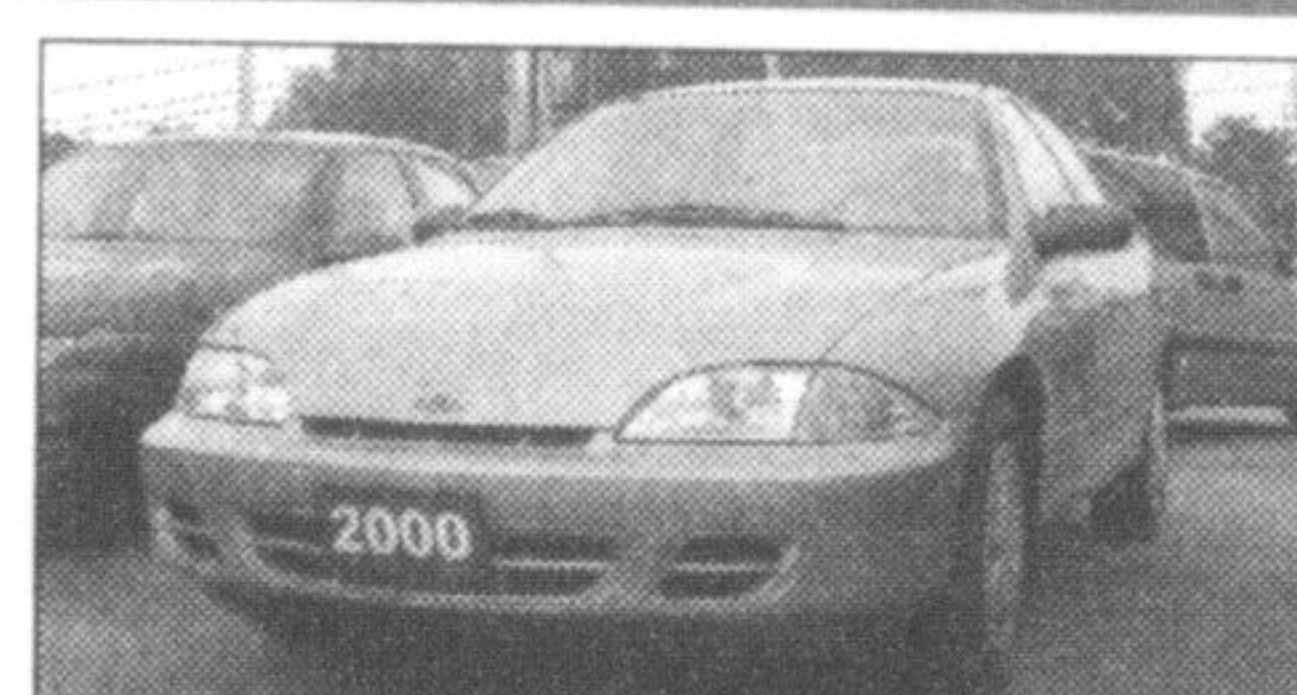


**2001 GMC EXT. CAB SLE 4X4 PICK-UP**

V8, auto, air, tilt, cruise, pw, pl, alum. wheels, split frnt seat, green & pewter tutone, GM Warr 'til 2005, only 45,000 km.

#P2204

Only **\$27,995**



**2000 CAVALIER LS**

Auto, air, tilt, cruise, pw, pl, p.mirrors, keyless remote, sandrift. 6 mth - 10,000 km PT Warr.

#P2190

Low, low kms **\$10,995**



**1998 FORD WINDSTAR GL**

V6, auto, air, tilt, cruise, pw, pl, quad seats, alum. wheels, running board, one owner, 6 mth - 10,000 km PT Warr.

#P3988A

Only **\$8,995**



**2000 PONTIAC MONTANA**

4dr, auto, air, tilt, cruise, pw, pl, p.mirrors, p.vent win., quad seats, tutone bronze & sandrift, low km, 6 mth - 10,000 km PT Warr.

#P2216

Only **\$17,595**

\*\* Sale prices are subject to prior sale plus GST, PST, Registration Fee, Admin. Fee, Lic. Fee.

**GM** Serving Milton For  
Over 3 Generations  
The sensible way to buy a car or truck

Low bank financing available  
for a limited time.

# RICHARDSON

## CHEVROLET-OLDSMOBILE

HWY. 25 S. AT DERRY RD., MILTON

BUY WITH  
CONFIDENCE

**878-2393**