

Dateline

Saturday May 31

The Halton chapter of **Fair Vote Canada** holds a meeting at 10 a.m. at Walton Memorial United Church, 2489 Lakeshore Rd. W., in Oakville (on Lakeshore Road, just west of Bronte Road). Gail Turner facilitates a workshop on proportional voting systems. Everyone is welcome. For more information, call Gail at (905) 637-2279 or e-mail her at gbunty@cogeco.ca.

Monday June 2

Wellspring Halton Peel — Cancer Support Centre, 2545 Sixth Line, in Oakville holds a **body-mind meditation drop-in program** from 10:30 a.m. until noon. For more information, call (905) 257-1988.

To celebrate June being **Seniors' Month**, Allendale is inviting Miltonians to come between 9:30 and 11:30 a.m. to take one of the residents for a walk or simply visit with them. Allendale is located at 185 Ontario St. For more information, call (905) 878-4141.

Tuesday June 3

The **Peel/Halton Vaginal Birth After Cesarean-Cesarean Awareness Group** provides information, support and topical discussions at its meetings at 7:30 p.m. For more information, call Cheryl at (905) 459-9804 or Adrienne at (905) 846-6453.

Improve communication and leadership skills with the **Milton Toastmasters**. Everyone is welcome to attend the meeting at the Royal Canadian Legion, 21 Charles St. (upper level), at 7:30 p.m. For informa-

tion, call Ross at (416) 953-9413.

The Art of Healthy Living holds a **parent support group** for parents of children who are dependent on drugs or alcohol. The group meets at 72-74 Mill St. in Georgetown from 7:30 to 9 p.m. For more information, call (905) 702-7304.

Help for Parents, a parent support group, meets in Burlington. This non-denominational self-support group helps parents of children who are in trouble at home, at school or with the law or who are abusive or taking drugs. The group is a member of Association of Parent Support Groups in Ontario. For times and directions, call 1-800-488-5666 or visit www.apsgo.ca.

Calling New Parents, a free program for parents and babies aged 6 months and younger, meets with a public health nurse to discuss parenting and infant care. The group meets at the Milton Community Resource Centre, 917 Nipissing Rd., from 1:30 to 3:30 p.m. For more information, call (905) 693-4242, ext. 7899.

The Milton Human Resource Centre of Canada for Students holds a **free barbecue** and information booth outside its office at 310 Main St. E. from 11 a.m. to 3 p.m. Call the office at (905) 878-8418, ext. 214, for more information.

The Milton Seniors' Activity Centre, 500 Childs Dr., holds an afternoon of **cribbage** at 1 p.m. The cost is \$1.50 for members and \$2 for non-members. The centre also holds its **Evening Euchre Party** at 7:30 p.m. with keen competition and prizes. The cost is \$2. Call the centre for details on these activities at (905) 875-1681.

Milton District Hospital holds a **breast-**

feeding clinic from 9:30 to 11:30 a.m. A certified lactation consultant is available to assist and answer questions. For more information or to make an appointment, call Jean Gallen at the hospital at (905) 878-2383, ext. 7030.

The regular monthly meeting of **Pesticide Alternatives for Milton** takes place at 7:30 p.m. Visitors and new members are welcome. Call (905) 693-9812 for more information.

Dateline items run at least once before the event date.

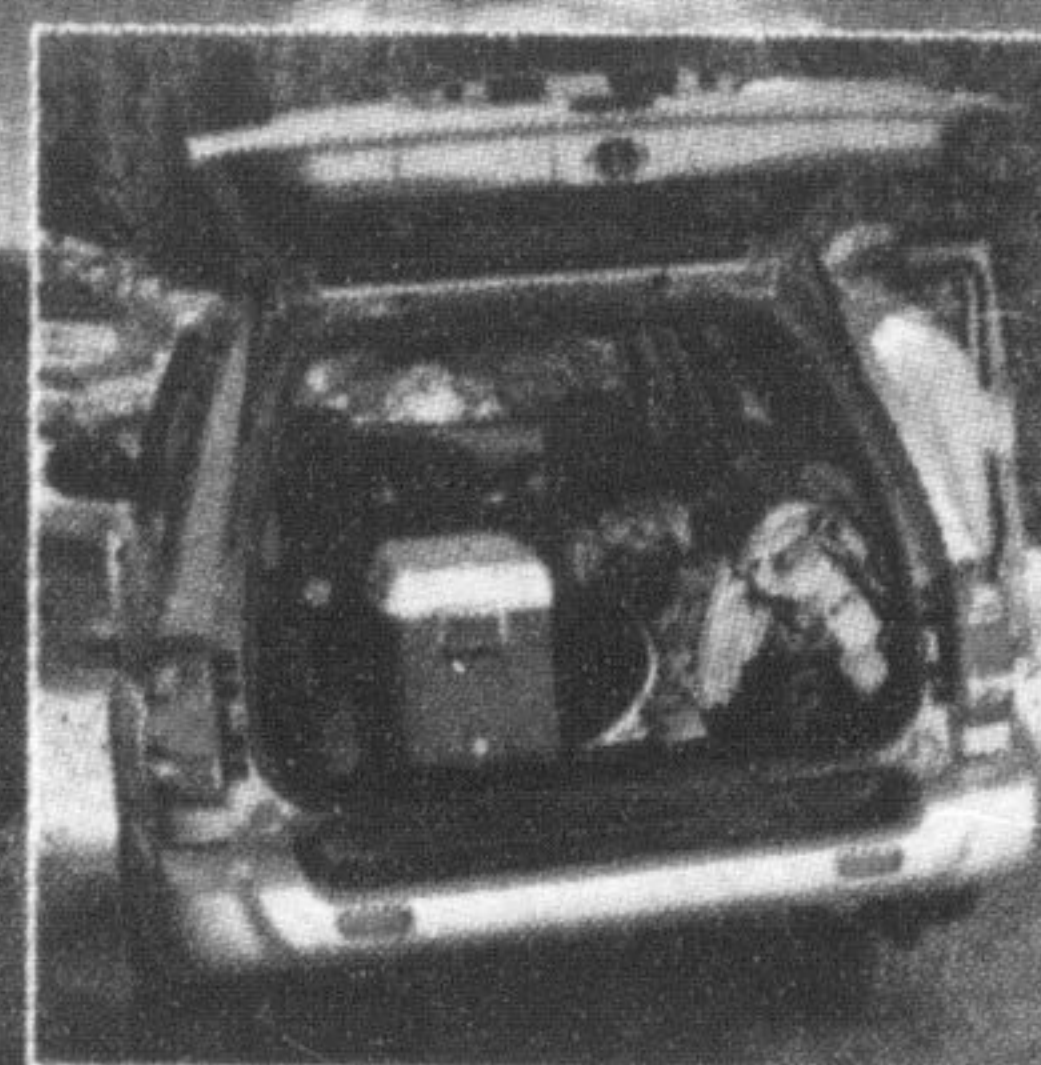
WAL-MART CORRECTION NOTICE

Please note that the picture of the No-Heat Gel Hair Removal Kits on page 25 of our current flyer ending June 1st is incorrect, and does not reflect the item being advertised. However, the price and description for this item is correct.

=====

We apologize for any inconvenience this may have caused.

NISSAN'S GET INTO GEAR EVENT



2003 PATHFINDER
"Chilkoot Edition"

NEW LOWER PAYMENT

\$359 per month lease for 48 months with \$5,150 down.*

Includes destination and delivery.

or **1.8%** finance your purchase for 36 months.

CHOOSE YOUR PAYMENT

(48 MONTH LEASE)
\$0 DOWN \$475/MONTH
\$3,500 DOWN \$396/MONTH

*"All Mode" 4 Wheel-Drive (with Automatic Package) • Bose Audio System with 6-disc CD changer and steering-wheel-mounted audio controls • Air Conditioning • Electronic Compass & Outside Temperature Display • and more.



2003 XTERRA
Xterra XE

\$338 per month lease for 48 months with \$4,600 down.*

Includes destination and delivery.

CHOOSE YOUR PAYMENT

(48 MONTH LEASE)
\$0 DOWN \$445/MONTH
\$2,200 DOWN \$384/MONTH

*Power windows, mirrors, and door locks • Side step rails • Part-time 4-wheel drive system • Tubular roof rack with removable basket and wind deflector • Air Conditioning • and more.

IT'S ONLY A GREAT DEAL IF YOU GET A GREAT CAR.



2003 MAXIMA
Maxima GXE with Automatic

\$399 per month lease for 48 months with \$2,995 down.*

Includes destination and delivery.

Or finance your purchase for **0.9%** for 36 months.*

"In the eight subsequent years that include this 2003 win, Nissan has won a Best Engines spot every time"
- Ward's 10 Best Engines, Ward's Auto World, Jan. 2003

THE NEW 2004 SENTRA

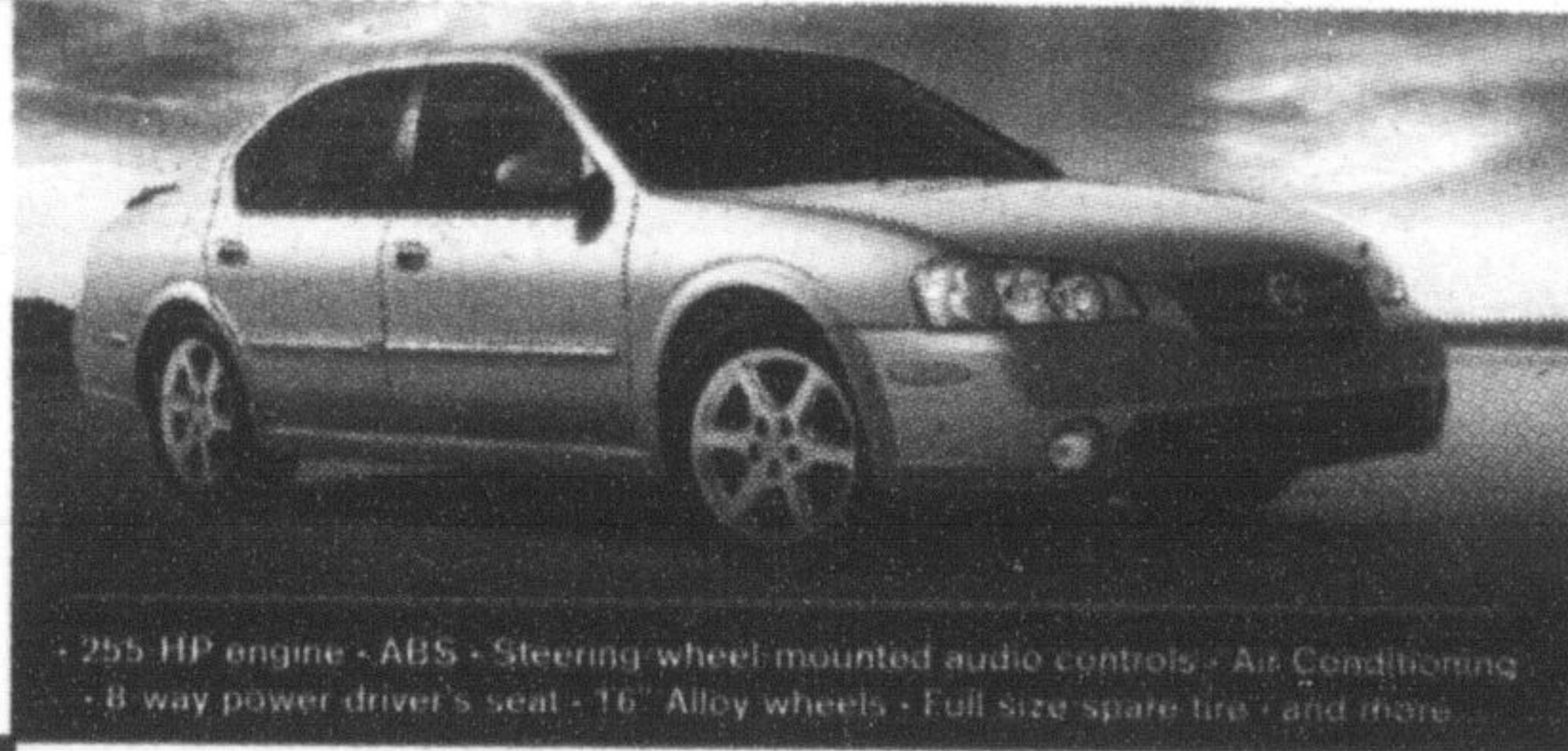
Choose Sentra 1.8, SE-R or SE-R Spec V

Starting at **\$15,598****

Great deals on remaining 2003s

Financing as low as **1.8%** for 48 months.*

*No payments for the first 90 days. Or \$0 security deposit (O.A.C.)

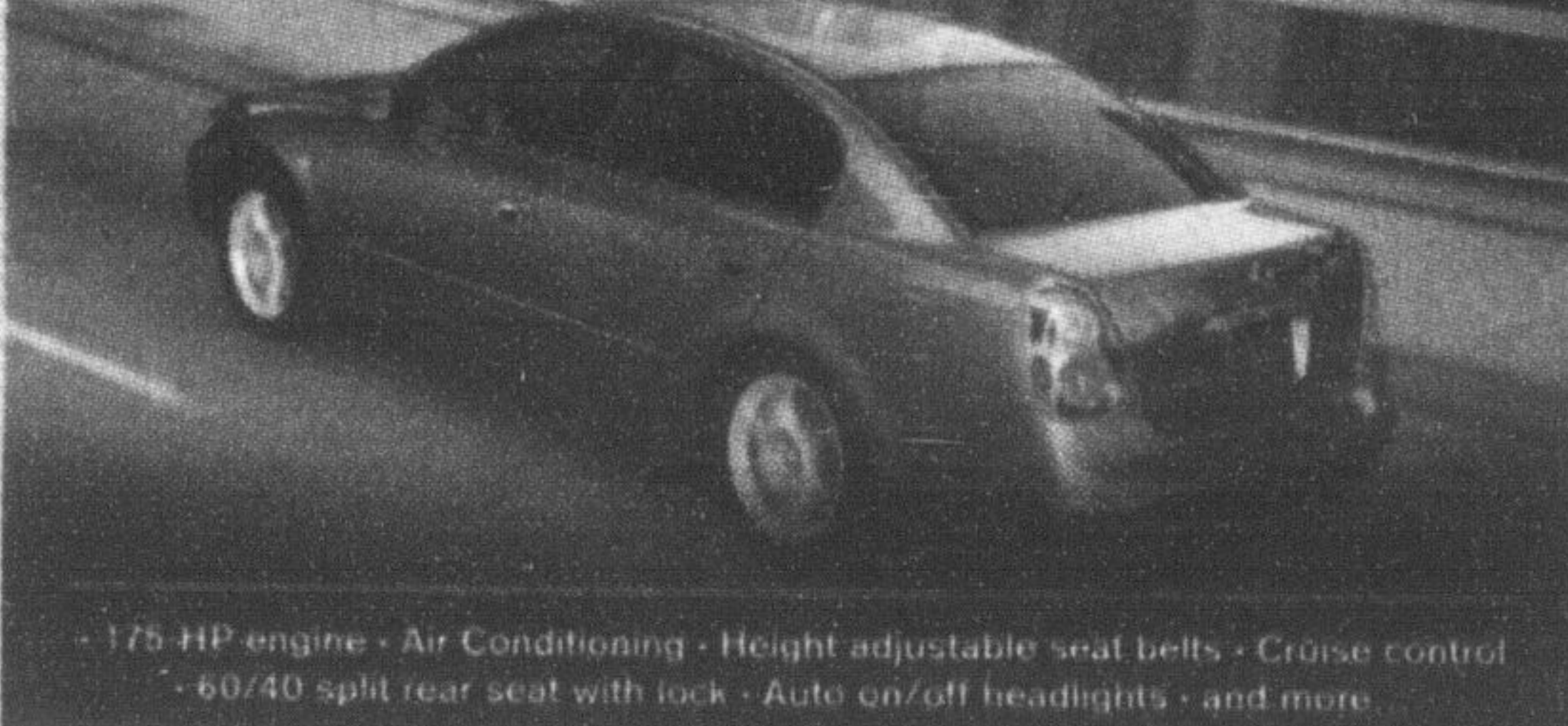


2003 ALTIMA
Altima 2.5S

\$299 per month lease for 48 months with \$3,160 down.*

Includes destination and delivery.

2002 CANADIAN CAR OF THE YEAR
2002 BEST NEW FAMILY CAR
2002 BEST NEW DESIGN



*175 HP engine • Air Conditioning • Height adjustable seat belts • Cruise control • 60/40 split rear seat with lock • Auto on/off headlights • and more.

Drive home an award-winning vehicle today.

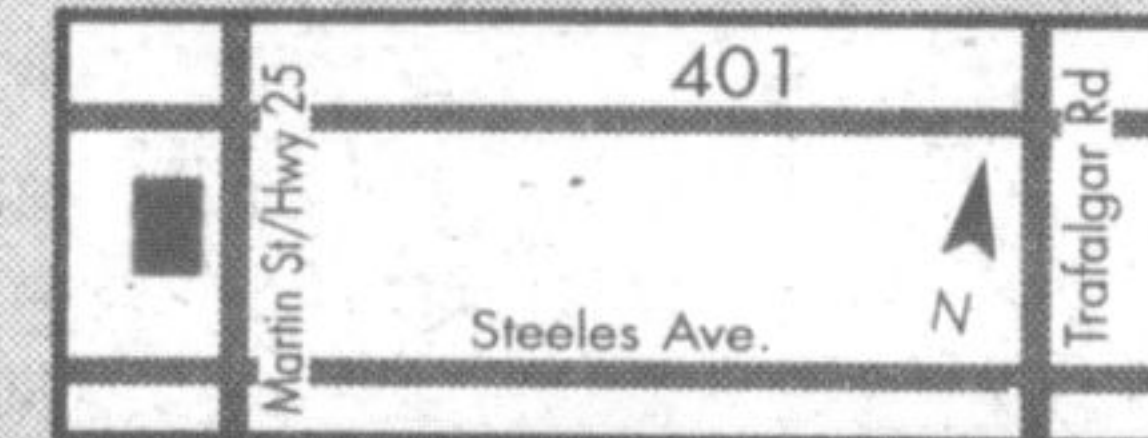
HURRY IN, LIMITED TIME OFFERS

on all Nissan Sentra, Altima, Maxima, 350Z, Murano, Xterra, Pathfinder and Frontier.

Milton's
NORTH END NISSAN LTD.

610 MARTIN STREET, MILTON 905-878-4137

SALES DEPT. HOURS: Mon.-Thurs. 9:00 - 9:00
Fri. 9:00 - 6:00
Sat. 9:00 - 5:00



SHIFT

www.nissan.ca

All offers are only on approved credit, available for a limited time, and may change without notice on new 2003 Sentra XE 5-speed manual with Value Option Package (C4LGS3 BK00), 2003 Altima 5 (T4RG73 AE00), 2003 Maxima GXE Automatic (U4RG73 A400), 2003 Pathfinder "Chilkoot Edition" Automatic (6CRG73 AE00), 2003 Xterra XE (DCLGS3 A400). Offers cannot be combined with any other offers and except where otherwise noted include destination and delivery. Dealer may sell/lease for less. Not all vehicles are available at all Dealerships. License, insurance, and taxes are extra and must be paid at the time of transaction. *For 36 months finance Maxima/Pathfinder for 0.9%/1.8% or finance Sentra XE and GXE for 48 months at 1.8%. Financing examples: \$30,000 at 0.9%/1.8% per annum for 36 months equals \$944.05/\$856.66 per month. COBI is \$418.07/\$392.73 for an obligation total of \$30,418.07/\$30,839.79. \$20,000 at 1.8% per annum for 48 months equals \$452.16 per month. COBI is \$743.88 for an obligation total of \$20,743.88. *First payment due 90 days after date of delivery on financed purchases on new 2003 Sentra. No interest for 90 days. *48-month lease on Sentra XE 5spd/Altima 2.5S/Maxima GXE/Pathfinder Chilkoot Edition/Xterra XE manual 2.5S/5.2S/4.2S/3.9S/2.5S ALR. Leases based on a maximum of 90,000 km with excess charged at \$0.10/km. If these vehicles are financed and the cash purchase price are not taken, the effective interest rate for Sentra and Maxima is 5.1%. *Vehicle not exactly as shown and used for illustration purposes. Nissan, the Nissan Brand Symbol, "SHIFT," tagline, Z and Nissan model names are Nissan trademarks. See your nearest Nissan Dealership or go to www.nissan.ca for more information.

Milton Community Resource Centre Presents...

10th Annual Family Fun Fair

June 7th, 2003

Victoria Park Square
(Behind Town Hall)

9:00 am to 3:00 pm

Fun, Games, Prizes, Crafts
Demonstrations and BBQ

Call for info 905-876-1244

Thanks to the SPONSORS...

Gold Sponsors:

The Canadian
Champion



EXPEDITE PLUS
Expedite Plus Inc.

Silver Sponsor:
North End Nissan

Bronze Sponsors:
Ontario Renaissance
Festival

Just for You Balloons
Halton Regional
Police Association
Wallace Pontiac

