



THE CORPORATION OF THE TOWN OF MILTON

TTY: 905-878-1657

905-878-7252

MILTON ON-LINE

http://www.town.milton.on.ca

LOWER BASE LINE ROAD Trafalgar Road to Ninth Line CLASS ENVIRONMENTAL ASSESSMENT STUDY NOTICE OF PUBLIC INFORMATION CENTRE #2

Lower Base Line Road between Trafalgar Road and Ninth Line is a 2 lane rural road with a bridge over Highway 407. In order to address the existing condition of Lower Base Line, the Town of Milton is carrying out a study of Lower Base Line (from Trafalgar Road to Ninth Line) in accordance with the Municipal Class Environmental Assessment (Class EA) process. The Town has retained the firm McCormick Rankin Corporation to complete the study.

Taking into consideration the comments received at the May 1, 2003 Public Information Centre #1, the Steering Committee has confirmed Alternative C as being the preferred alternative for the 2-lane reconstruction of Lower Base Line Road.

The second public information centre to review the preliminary plan for Alternative C and the preliminary landscaping plan has been arranged for:

PUBLIC INFORMATION CENTRE # 2

Date: Monday, June 2, 2003

Time: 5:00 p.m. – 7:30 p.m. Open House

Place: Boyne Community Centre (North Side of Britannia Road, East of Regional Road 25)

The Public Information Centre will consist of an informal drop-in centre from 5:00 p.m. to 7:30 p.m. where those who attend will have the opportunity to review the preliminary plan with representatives of the Town and their consultants.

Study Contacts:

Mr. Phil Antoniow
Project Coordinator
Town of Milton
43 Brown Street
Milton, Ontario, L9T 5H2
Phone: (905) 878-7252 ext. 2161
Fax: (905) 878-6995
e-mail: philantoniow@town.milton.on.ca

Ms. Leslie Scott
McCormick Rankin Corporation
2655 North Sheridan Way
Mississauga, Ontario, L5K 2P8
Phone: (905) 823-8500
Fax: (905) 823-8503
e-mail: lscott@mrc.ca

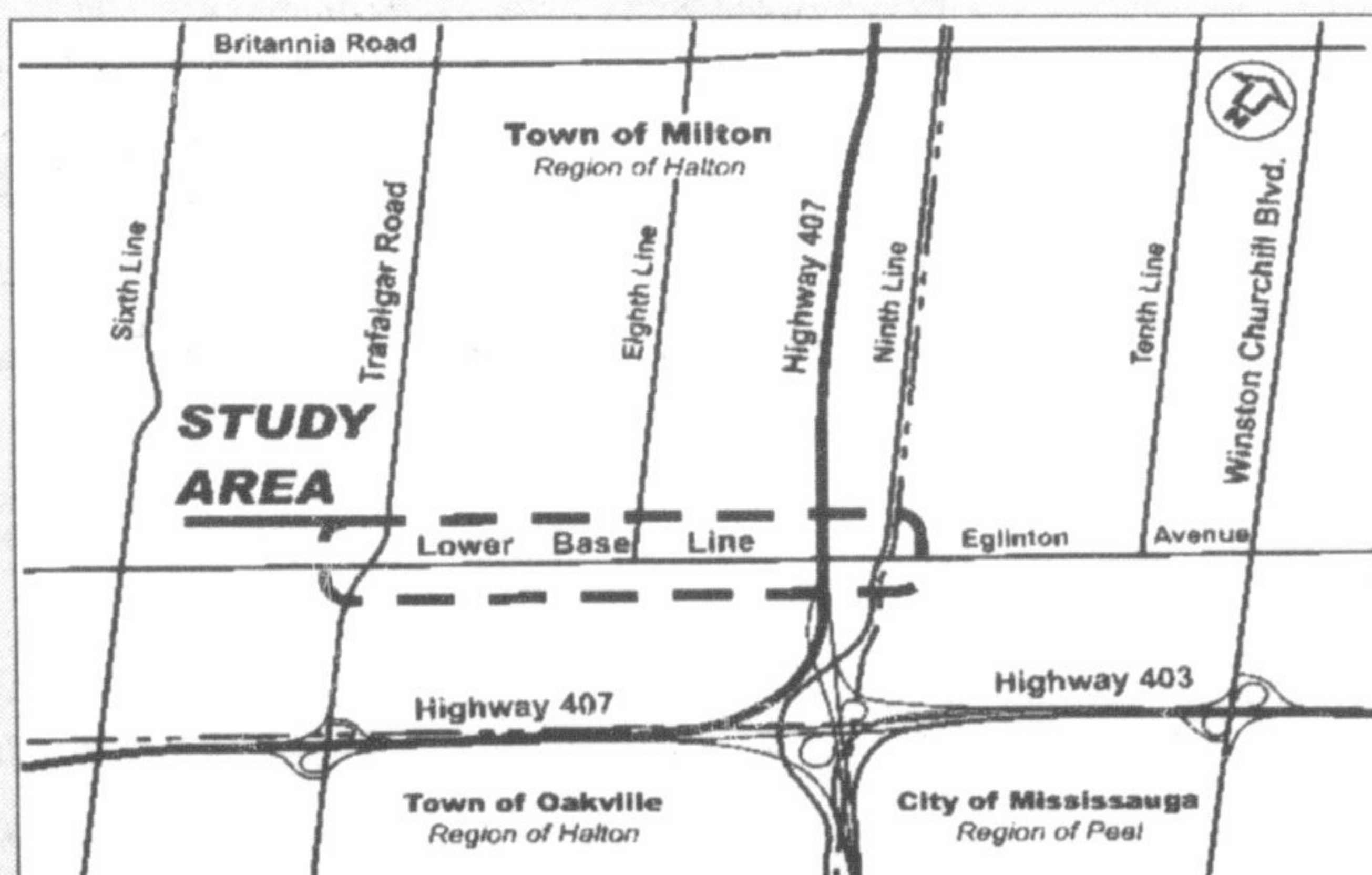


Photo by BRENNAN O'CONNOR

Ready to clash

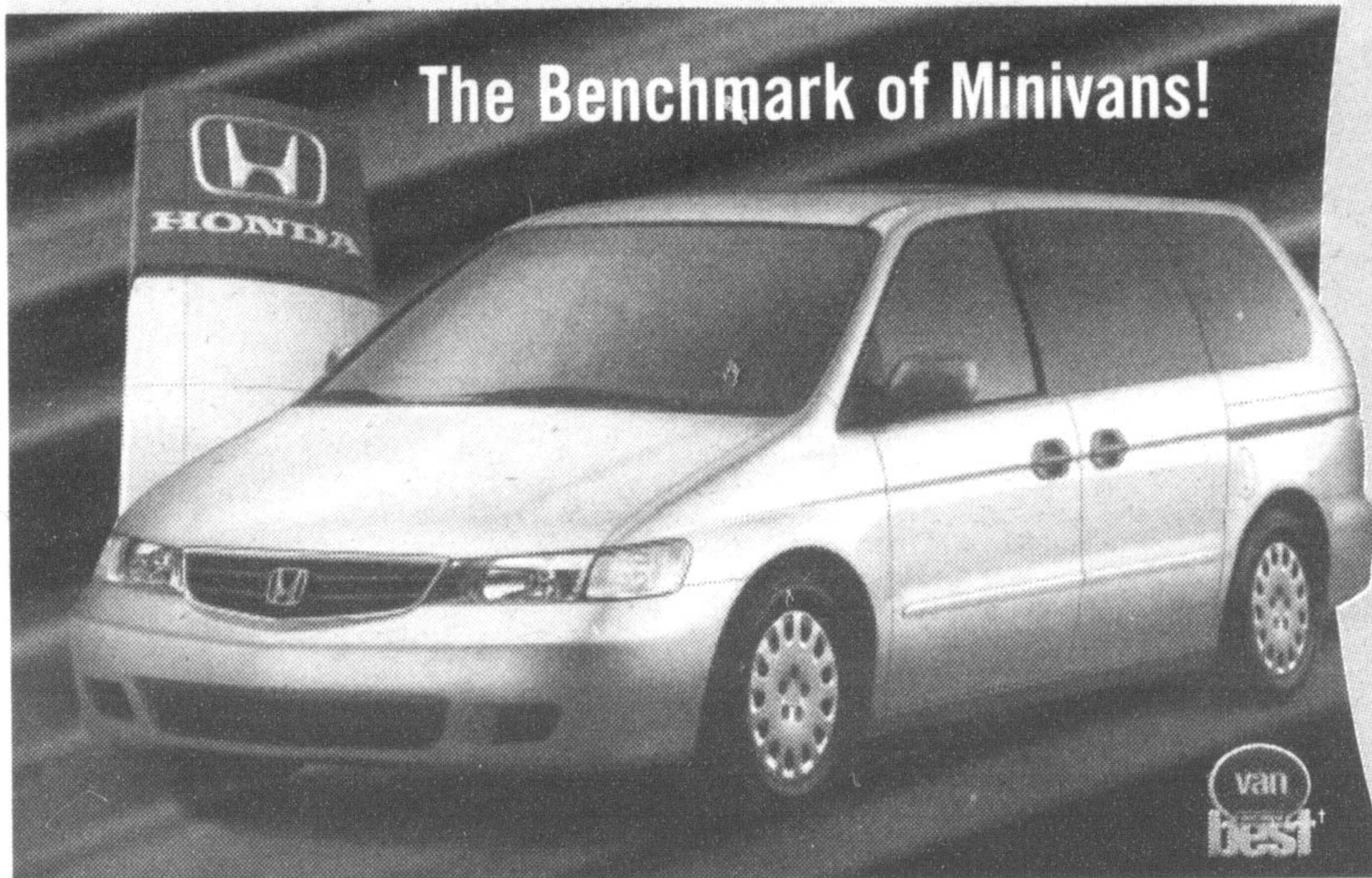
Halton Regional Police Const. James Barnes (left) and social worker Eileen Walker (centre) have some fun with local teen Kirsty Williams during an evening ball hockey game between youth and police at Milton District High School May 9. The game — part of an on-going program to bridge youth and community leaders — was organized by the Milton Community Consultation Committee and held in conjunction with National Youth Week.

GRAND OPENING PREVIEW

Come in and take a look around our state-of-the-art dealership
Specials on Odyssey, CRV & Civic. Low financing rates! Call for details!
30th Anniversary Civic Edition and specialized Hard Rock Edition on CRV & Pilot

Honda Odyssey

The Benchmark of Minivans!



get what you want!

Honda Odyssey LX

5.8% Lease Rate
\$0 Security Deposit
\$32,200 MSRP*
Lease it for \$388*
per month for 48 months
with \$4,325 down
*MSRP includes freight and P.D.E. included

- 240-hp, 3.5 Litre VTEC™ V6 Engine • Air Conditioning with Front & Rear Controls • 5-Speed Automatic Transmission • Power Windows & Door Locks
- 4-Wheel ABS • Immobilizer Theft-Deterrent System • AM/FM Cassette Audio System • Dual-Stage, Dual Threshold Front Airbags and Front Side Airbags
- Dual Rear-Side Sliding Doors • Heated Power Door Mirrors • Cruise Control
- Front and 2nd Row Captains Chairs • 3rd-Row Retractable Magic Seat™

NHTSA FIVE-STAR SAFETY RATING**

Honda Civic

30th Anniversary Edition Civics

EXTRA FEATURES INCLUDED:

- Rear Spoiler
- Metallic Dash Panel Kit
- Hood Edge Protector
- Embroidered Floor Mats
- 30th Anniversary Badging
- Rear Splash Guards

Value Price Advantage
\$1088

White Supplies Last. *Available on most Civic Sedans and Coupes

*Extra Features Value (\$1,380) minus incremental price (\$300 already included in MSRP & lease payments).



get what you want!

4.8% Lease Rate
on all new 2003 Civics

Civic Coupe LX
30th Anniversary Edition
\$18,700 MSRP* with \$5.8% financing



\$218

per month for 48 months with \$4,325 down

*MSRP includes freight and P.D.E. included

**NHTSA 5-Star Safety Rating

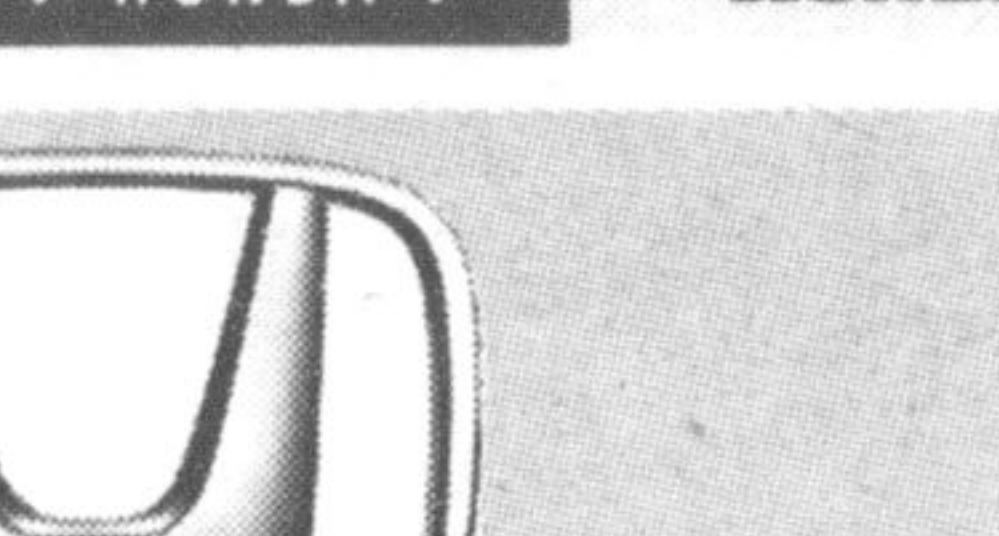
• Excellent Fuel Efficiency

• Highest 5-Star Safety Rating*

• Outstanding Resale Value • Spacious, Interior Side

• Superior Handling • Great Value for Money

Civic Sedan DX-G
30th Anniversary Edition
\$17,900 MSRP* with \$5.8% financing



\$218

per month for 48 months with \$4,325 down

*MSRP includes freight and P.D.E. included

**NHTSA 5-Star Safety Rating

Your Neighbourhood ONTARIO Honda DEALERS

HCFI

Lease offer is available on approved credit only through Honda Canada Finance Inc. until May 31, 2003. Lease payment shown is for 48 months and includes \$500 for freight and P.D.E. with 50,000 km allowance (22¢/km exceeding 50,000 km applies). *Based on a new 2003 Odyssey LX Coupe (R18,100) \$188 per month for 48 months, A.R. 5.8% (total lease obligation of \$18,824). Down payment or equivalent trade-in of \$4,325 (zero down payment plan available). Tax first monthly payment required. Offer to purchase at lease end for \$15,456 plus taxes. **MSRP does not include freight and P.D.E. (MSRP). *Includes finance, insurance, administration, registration and maintenance fees are additional. Dealer may sell lease for less. *Your Car and Driver magazine, July 2002. **Crash tests based on a 2001 Odyssey. For more details on crash testing results, visit www.safercar.com. See your neighbourhood Ontario Honda dealer for details.

hondaontario.com OR 1-888-9-HONDA-9



Your Neighbourhood ONTARIO Honda DEALERS

hondaontario.com OR 1-888-9-HONDA-9



Georgetown Honda

316 Guelph St., Georgetown 905-873-1818



HONDA