



**THE CORPORATION OF THE
TOWN OF MILTON**

TTY: 905-878-1657

905-878-7252

**MILTON
ON-LINE**

<http://www.town.milton.on.ca>

BID REQUEST

#03-165, Pre-Qualification of General Contractors for Drumquin Park Redevelopment

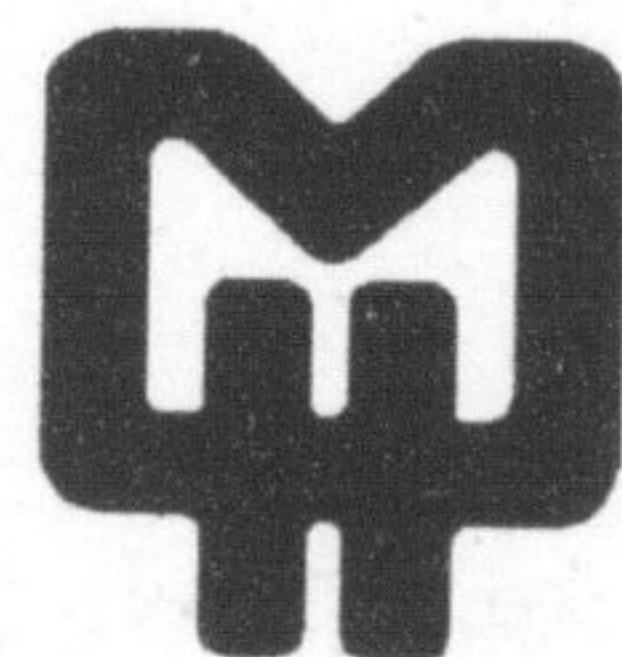
Bids on forms supplied by the Town of Milton will be received by the Corporate Services Department, Purchasing until 11:00 a.m. local time on:

March 12, 2003

Bid documents may be obtained at the Town Hall, Corporate Services Department, Purchasing, 43 Brown Street, 2nd Floor, Milton, Ontario during normal business hours, Monday through Friday, 8:30 a.m. to 4:30 p.m.

Any inquiries regarding this bid may be directed to Purchasing at (905) 875-5404. If you would prefer the bid document sent by courier, please complete the Request for Bid Document form on the Town's web site: www.town.milton.on.ca. Plan takers and current and upcoming bids are also posted on the web site.

MILTON HYDRO Issues Phase 2 Rebates



Customers of Milton Hydro will receive their phase 2 rebates on their next bill (mailed after March 1st).

Who is entitled to a Phase 2 Rebate?

Low volume (less than 150,000 kWh's annually) and designated consumers with an active account on November 25, 2002.

How much is the Rebate?

The total rebate owing is the difference between what was paid for the commodity portion of your bill between May 1, 2002 and November 30, 2002 and what would have been paid at 4.3 cents per kilowatt hour. This amount is then adjusted by your previous rebate.

If your actual rebate owing is less than the amount previously rebated, you will only receive a rebate for the GST on your phase 1 rebate.

What if I have moved since May 1st?

- Moved within Milton between May 1, 2002 and February 28, 2003 and you remain a customer of Milton Hydro** – Milton Hydro will refund the rebate you earned on your final billed account, along with your current account's rebate, to your current bill.
- Moved outside of Milton between May 1, 2002 and November 25, 2002** – you will receive a letter from Milton Hydro which includes the calculation for your rebate entitlement, which should then be taken to your current utility who will calculate your total phase 2 rebate.
- Moved outside of Milton between May 1, 2002 and November 25, 2002, however you are currently not responsible for utilities** – you will receive a letter from Milton Hydro which includes the calculation for your rebate entitlement, however regulations are forthcoming from the Ministry of Energy.
- Moved outside of Milton after November 25, 2002** – Milton Hydro will be issuing a refund cheque, by March 31, 2003, for any eligible further rebate.
- Moved from another utility between May 1, 2002 and November 25, 2002 and was a Milton Hydro customer on November 25, 2002** – Provide Milton Hydro with correspondence (bills/letters) from your former utility and we will credit your account for any eligible rebate.

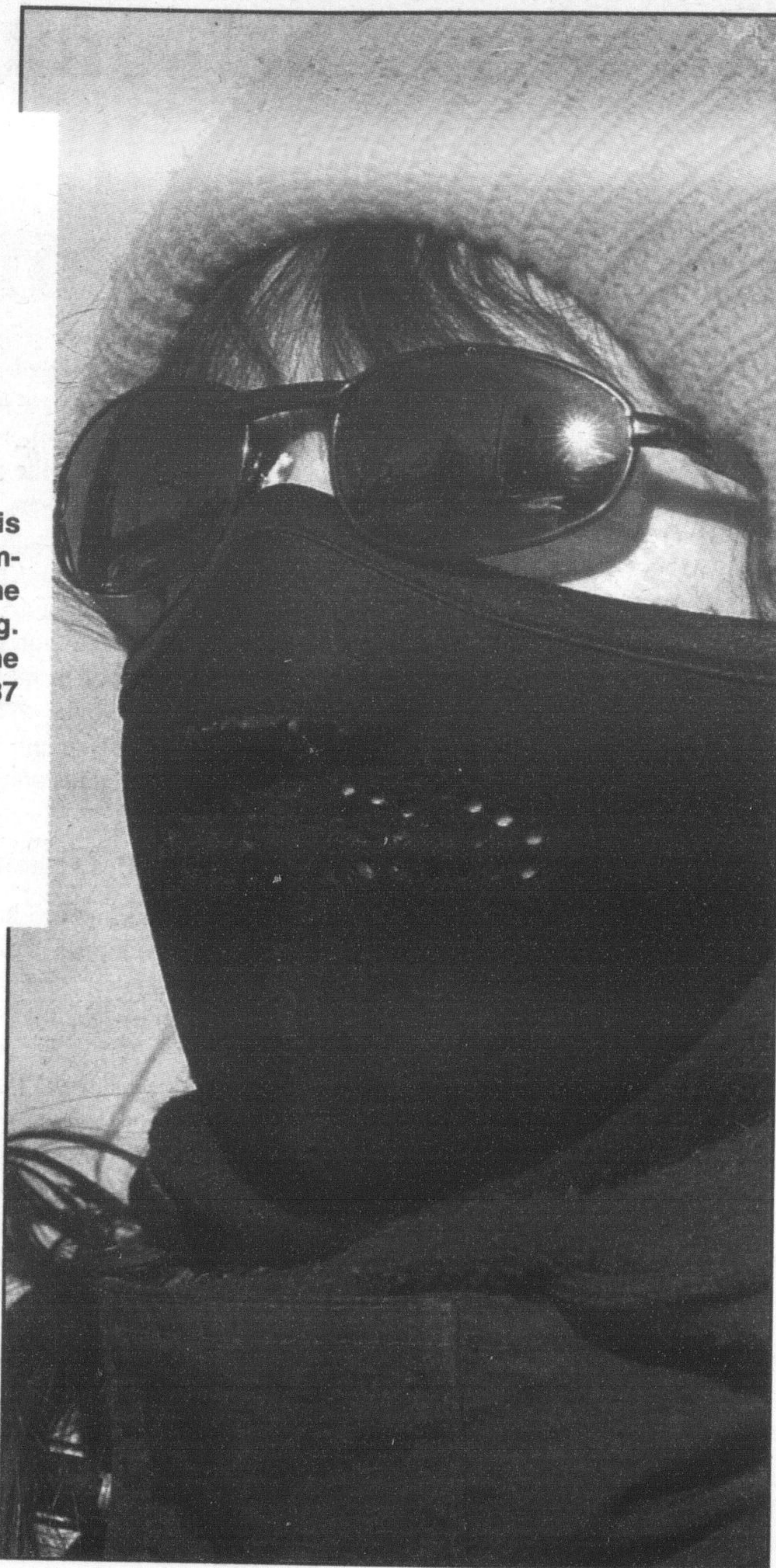
For questions concerning your rebate, contact Milton Hydro at (905)876-4611

Questions concerning Bill 210 can be directed to the Ministry of Energy, Science and Technology at 1-888-668-4636 or visit their web site at www.est.gov.on.ca

Trying to keep warm

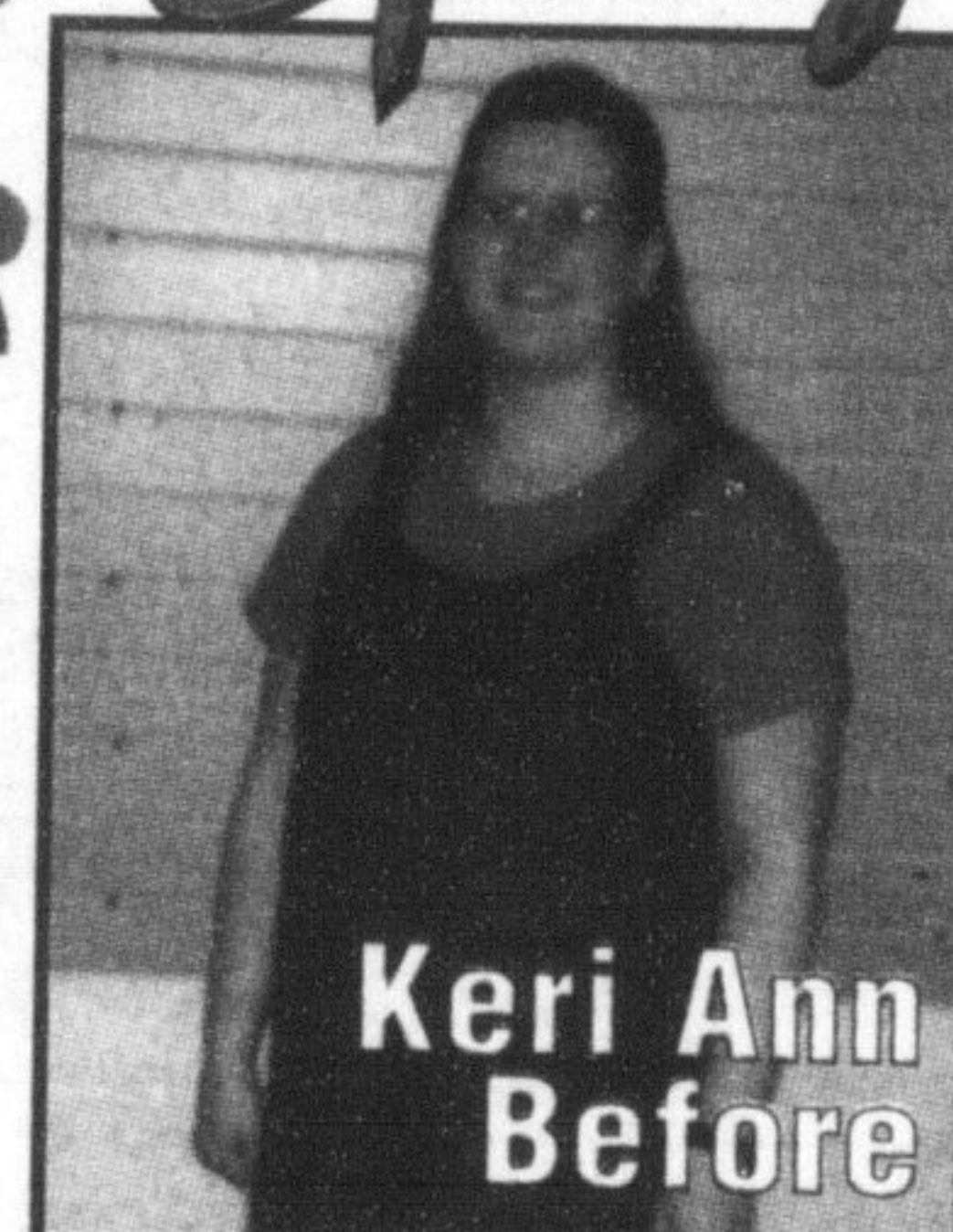
Crossing guard Louise Davis braves the minus 24 degrees C temperatures yesterday morning at the Woodward Avenue crossing. Despite the bright sunshine, the windchill made it feel like minus 37 degrees C.

Photo by
GRAHAM PAINE



HYPOTHERMIA
What Should You Do?
DO...
 Keep the person warm by wrapping him/her in blankets and moving him/her to a warm place. Remember to be very gentle in handling the person.
 Put hot water bottles, heating pads (if the person is dry), or other heat sources on the body, keeping a blanket, towel or clothing between the heat source and the skin to avoid burns.
 Give warm liquids to drink, if the person is awake.
 DON'T...
 Do not warm the person too quickly by immersing him or her in warm water. Rapid rewarming can cause heart problems.
 Never rub the surface of the person's body, this could cause further damage if they are also suffering from frostbite.
 Avoid giving alcohol and caffeine to drink, it can hinder the body's heat producing mechanisms.
 Canadian Red Cross

Spring Into A New You!



**Keri Ann
Before**

"I was tired of feeling tired all the time! I was always hiding behind big baggy clothes, feeling uncomfortable..."

I knew there was a (Herbal Magic®) centre near my house and one day I just walked in. The staff at the centre became my newest best friends because they had the same goal as me - to get me to my goal weight. Now, I feel better about myself, more confident. It's just nice to have more self esteem."



**Keri Ann
After**

- Lose up to 7lbs per week.
- No shakes or shots.
- All natural ephedrine & caffeine free products.

72 pounds
Lighter

79 inches
Smaller

100%
Happier!

Herbal Magic
weight loss • nutrition • herbal remedies

Enroll Today! Call 693-9594
15 Martin St., (Carriage Square)

www.herbalmagicsystems.com