



TRIED TESTED & TRUE

Payment-Free 2003

THREE WAYS TO BE PAYMENT-FREE

PAYMENT-FREE FOR 12 MONTHS

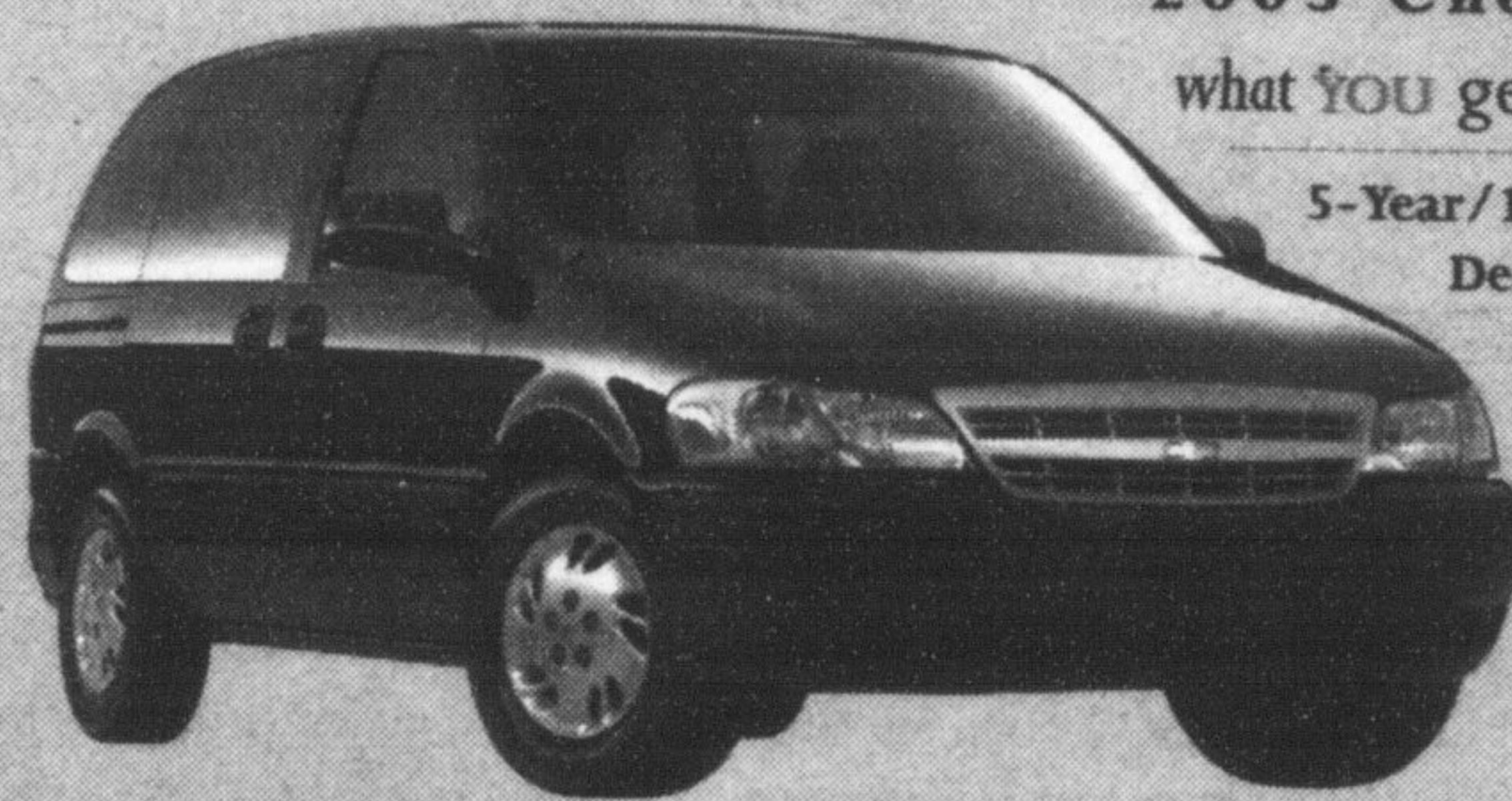
Get 12 months payment-free on virtually all new 2003s.*

get **0%** financing

UP TO 48 MONTHS[†] PLUS PAYMENT-FREE FOR 100 DAYS[†]

DRIVE-AWAY WITHOUT PAYING

\$0 FIRST LEASE PAYMENT
\$0 DOWN PAYMENT
\$0 SECURITY DEPOSIT



2003 Chevrolet Venture

what YOU get:

- 5-Year/100,000 km GM Powertrain Warranty with \$0 Deductible • 3.4L 185-HP V6 Engine • 4-Speed Automatic • Air Conditioning • Power Locks • CD Stereo • Tilt Steering • Flip and Fold Removable Seats • Standard Integral Child Seat • Dual Sliding Doors • Optional Side Air Bags Available for an Additional Charge

easy TO GET INTO:

OR **\$23,198*** CASH PURCHASE plus freight
 OR **\$238**** PER MONTH/48 MONTHS \$4,811 DOWN PAYMENT PLUS FREIGHT
 OR **0%** UP TO 48 MONTHS

ENERGUIDE

Most Fuel Efficient Van in its class*

★★★★★

FIVE STAR SAFETY RATING
On vehicles equipped with optional air bags Chevrolet Venture holds a 5-Star front seat rating in side impact tests.[†]

easy TO GET INTO:

OR **\$19,998*** CASH PURCHASE plus freight
 OR **\$248**** PER MONTH/48 MONTHS \$1,773 DOWN PAYMENT INCLUDES FREIGHT
 OR **0%** UP TO 48 MONTHS

2003 Chevrolet Malibu

what YOU get:

- 3.1L 170-HP V6 Engine • 4-Speed Automatic • Air Conditioning • Power Locks/Windows/Mirrors • Remote Keyless Entry • Cruise Control

STANDARD V6 POWER

what YOU get:

5-year/100,000 km GM Powertrain Warranty with \$0 Deductible

- REDESIGNED Exterior • NEW 2.2L 140-HP ECOTEC Engine • IMPROVED Ride and Handling • NEW 60/40 Split-Folding Rear Seat • 5-Speed Getrag Manual

easy TO GET INTO:

OR **\$12,978*** CASH PURCHASE plus freight
 OR **\$178**** PER MONTH/48 MONTHS \$1,214 DOWN PAYMENT INCLUDES FREIGHT
 OR **0%** UP TO 36 MONTHS

2003 Chevrolet Cavalier VL Sedan



2003 Alero GX Sedan



easy TO GET INTO:

OR **\$20,398*** CASH PURCHASE plus freight
 OR **\$238**** PER MONTH/48 MONTHS \$1,740 DOWN PAYMENT INCLUDES FREIGHT
 OR **0%** UP TO 48 MONTHS

5-year/100,000 km GM Powertrain Warranty with \$0 Deductible • 2.2L ECOTEC Engine • 4-Speed Automatic • Air Conditioning • Cruise Control • CD Stereo

2003 Chevrolet Impala

what YOU get:

- 3.4L 180-HP V6 Engine • 4-Speed Automatic • Air Conditioning • Power Locks/Windows/Mirrors/Trunk • Remote Keyless Entry • Cruise Control

ENERGUIDE

Most Fuel Efficient Vehicle in its class*

★★★★★

FIVE STAR SAFETY RATING
Chevrolet Impala holds a 5 Star front crash test rating.

easy TO GET INTO:

OR **\$23,698*** CASH PURCHASE plus freight
 OR **\$268**** PER MONTH/48 MONTHS \$1,913 DOWN PAYMENT PLUS FREIGHT
 OR **0%** UP TO 48 MONTHS



2003 Chevy TrailBlazer

what YOU get:

- 4.2L 275-HP V6 Engine • 4-Speed Automatic • AutoTrac Automatic AWD • Air Conditioning • Power Locks/Windows/Heated Mirrors • Remote Keyless Entry

easy TO GET INTO:

OR **\$36,498*** CASH PURCHASE plus freight
 OR **\$398**** PER MONTH/48 MONTHS \$4,148 DOWN PAYMENT PLUS FREIGHT
 OR **0%** UP TO 36 MONTHS

*Administration fees, PPSA and certain taxes may be payable on signing.

For the latest information visit us at gmcana.com, drop by your local Chevrolet • Oldsmobile Dealer or call us at 1-800-GM-DRIVE. *Offer available OAC on GMAC purchase financing contracts at GMAC standard rate effective at time of signing with term up to 48 months. The total maximum term will be 60 months including the 12 month delerral period. †Available on approved GMAC purchase financing up to 60 months. ††Offer applies only to vehicles delivered on or before March 20, 2003. †††Offer available on 48 month lease. General Motors will pay first month's lease payment (including PST and GST) plus security deposit. ††††Based on a 48 month lease. A down payment or trade of \$4,081.52/9,957.54/3,000 (Venture Value Van R7B/Impala R7A/TrailBlazer R7A) is required. PPSA, licence, insurance, registration, administrative fees, environmental taxes and other taxes not included. Annual cost of borrowing of 0.9%/0.9%/0.9%/0.9%/0.9%/0.9% per annum. Option to purchase at lease end is available with and are not calculated on the "Cash Purchase Price" shown. The difference between the price for the Smart-Lease/GMAC Purchase Financing offer and the "Cash Purchase" offer is deemed under provincial disclosure laws to be a cost of borrowing, whether or not the same represents actual interest, and is required to be expressed as an annual percentage which is 5.11%/6.68%/11.82%/4.16%/4.89%/1.76%. †††††Drive away without paying" offer does not apply to purchase financing offer. 0% purchase financing on approved GMAC credit only. Down payment and/or trade may be required. Monthly payment and cost of borrowing will vary depending on amount borrowed and down payment/trade as described. Offerers apply to qualified retail customers in the Ontario Chevrolet • Oldsmobile Dealer Marketing Association area only (including Ontario and excluding Northwestern Ontario). Dealers are free to set individual prices. Dealer order or trade may be required. Limited time offer which may not be combined with other offers. See your dealer for conditions and details. †Best in class. Based on Natural Resources Canada 2003 Fuel Consumption Guide ratings. †††††Testing conducted by the U.S. National Highway Traffic Safety Administration (NHTSA). †††††Visa International Service Association/TD Bank and GM, licensed users of marks. †††††Trademark of TD Bank.

