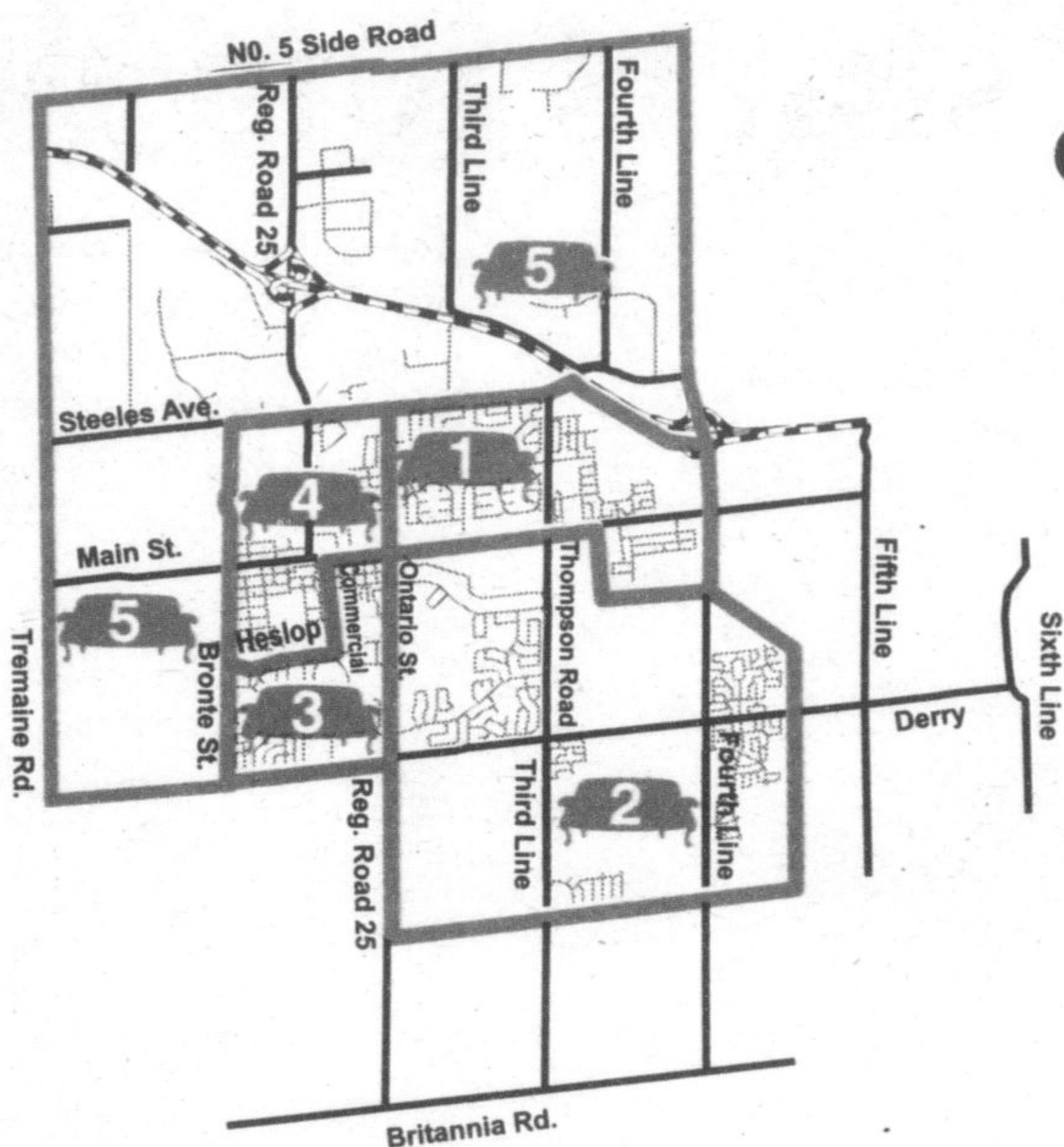


Halton Region

A Partnership That Works!

Milton Special Collection Schedule 2003



Town of Milton Collection Dates

- Zone 1 - Feb 5
- Zone 2 - Feb 12
- Zone 3 - Feb 19
- Zone 4 - Feb 26
- Zone 5 - March 5

Place items at the curb by 7:00 a.m.

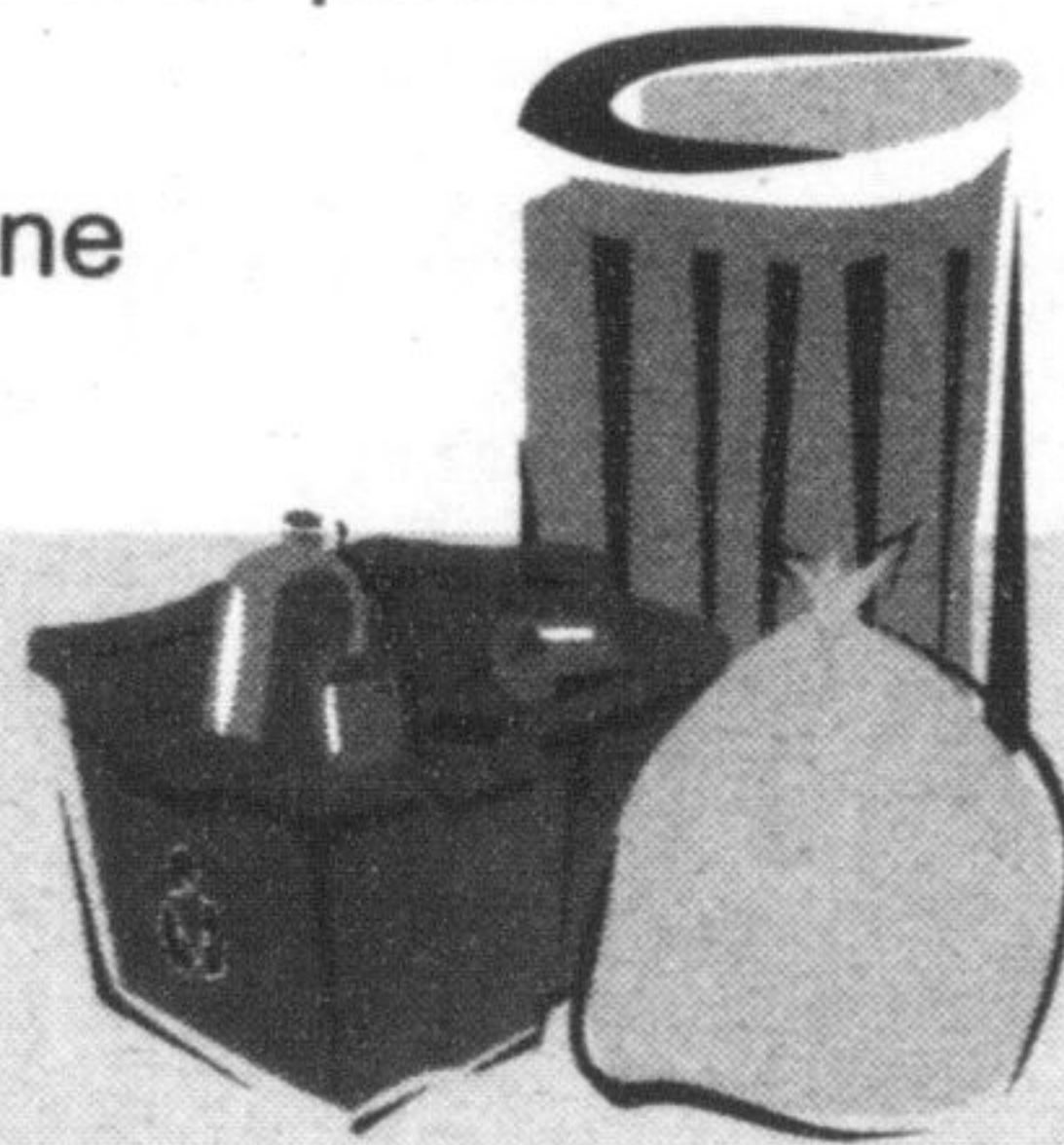
Items will be collected on the day designated for your zone.

- ✓ Acceptable Special Collection items include: household furniture, mattresses, electronic equipment, plumbing fixtures, etc.
- ✓ Remove doors from appliances for safety
- ✓ Bundle loose material such as wood in lengths no longer than 4 ft. (3 bundles max.)
- ✓ Do not pile items on top of one another
- ✓ Keep metal items apart from other material - metal is collected separately

The following materials will not be collected:

- | | |
|----------------------------------|--------------------|
| X Building and demolition debris | X Tree stumps |
| X Concrete and bricks | X Soil and rocks |
| X Household hazardous waste | X Automobile parts |
| X Cardboard boxes | X Tires |
| X Tree branches | X Propane Tanks |

Please note: White Goods is collected on a call in basis only. Please contact Halton Region to arrange for collection of appliances and metal items.



Welcome to Halton Region's Citizen Reference Library!

There are many occasions when Regional Council wishes to engage the public in discussion on various issues. Discussion of Regional issues is both important to and welcome at Halton Region. However, for an effective public consultation to take place, it's important for residents to have access to timely and accurate information. As a result, we've launched the Halton Citizen Reference Library, a self-serve library where Halton residents can read, request, download, print, photocopy, and conduct research on public issues being considered by Council. Residents can drop in to the library, Monday-Friday between 8:30 a.m. and 5:00 p.m. at Regional Headquarters or review the library reference material on line from the comfort of your own home. Evening appointments can also be arranged. For more information, please contact Access Halton at 905-825-6000 or toll-free at 1-866-4HALTON.



Halton Regional Chairman

NOTICE OF PUBLIC INFORMATION CENTRE No. 1

Steeles Avenue (Regional Road 8) Improvements Town of Halton Hills Class Environmental Assessment Study

The Regional Municipality of Halton has initiated a Class Environmental Assessment to consider a wide range of options to satisfy future travel demands on Steeles Avenue (Regional Road 8), from Trafalgar Road (Regional Road 3) easterly to Winston Churchill Boulevard (Regional Road 19), in the Town of Halton Hills. To address operational deficiencies associated with this segment of Steeles Avenue, a number of road improvement alternatives will be examined as part of the study including widening of the roadway, new road alignments and improvements to driveways & intersections, among others.

This study will be conducted in compliance with Schedule C of the Municipal Engineers Association *Municipal Class Environmental Assessment* (June 2000), which is approved under the Ontario Environmental Assessment Act. A Public Information Centre (PIC) is planned to provide further information to the public and interested stakeholders and to receive input and feedback on the study to date. The PIC is to be held:

Wednesday, February 12th, 2003
St. Stephen's Anglican Church
14996 Steeles Avenue (at 9th Line North)
Open House 5:30 - 8:00 PM/Presentation at 7:00 PM

Those attending the PIC will have an opportunity to meet the Project Team, review the study scope, and to discuss the issues related to the project including alternative solutions, environmental considerations and the preliminary list of evaluation criteria.

If you are unable to attend the PIC and require additional information, please contact:



Mr. Matt Krusto
 Project Manager
 Regional Municipality of Halton
 1151 Bronte Road
 Oakville, Ontario L6M 3L1
 Ext. 7225
 Email: krustom@region.halton.on.ca

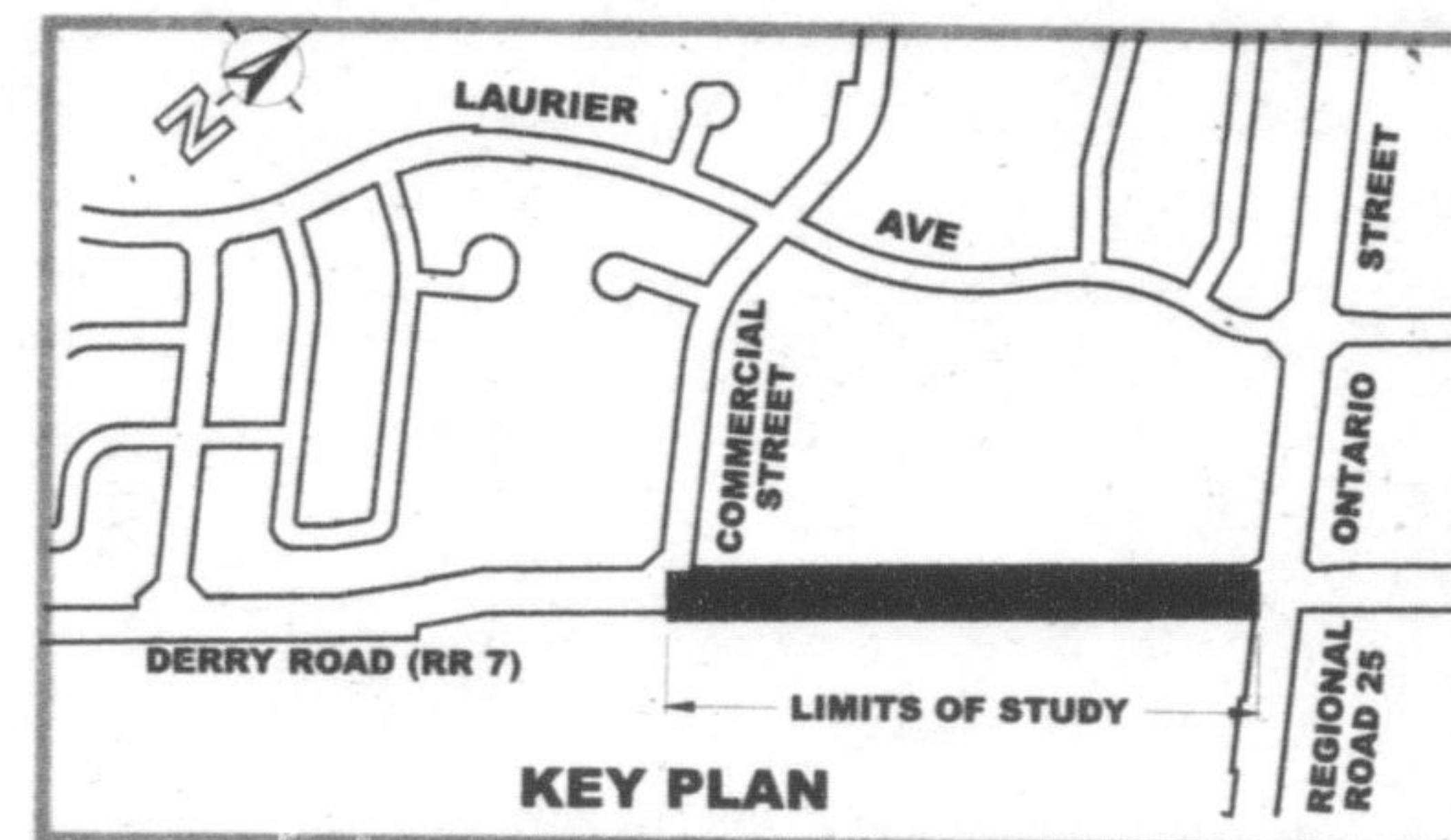
Mr. Claudio Covelli, M.A.
 Dillon Consulting Limited
 235 Yorkland Boulevard, Suite 800
 Toronto, Ontario M2J 4Y8
 Phone: 1-416-229-4647
 Fax: 1-416-229-4692
 Email: ccovelli@dillon.ca

www.region.halton.on.ca/ppw/planningroads This notice issued January 31st, 2003

CLASS ENVIRONMENTAL ASSESSMENT

750 mm Watermain on Derry Road (Reg. Rd. 7)
 Ontario Street to Commercial Street
 Town of Milton
 Region of Halton File: PR-2167
 Notice of Study Commencement

The Region of Halton is proposing to construct a 750 mm diameter watermain on Derry Road from Ontario Street, westerly to Commercial Street, in the Town of Milton. Philips Engineering Ltd. has been retained by the Region of Halton to carry out the engineering, planning and design of the project.



The watermain will connect the Town of Milton recreational complex and future residential development to the Lake Ontario based water supply. The trunk watermain and associated chambers will be constructed within the existing Derry Road right-of-way.

The project is being planned under Schedule 'B' of the Municipal Class Environmental Assessment, June 2000. A Notice of Study Completion will be published and a project file will be made available for review.

If you have any comments on this project or if you require further information, please contact either of the following by February 28, 2003:

Brenda Kingsmill
 Design Supervisor
 Regional Municipality of Halton
 Telephone: (905) 825-6000 Ext. 7622
 Facsimile: (905) 847-2192
kingsmill@region.halton.on.ca

Robert R. McLaughlin, P. Eng.
 Project Manager
 Philips Engineering Ltd.
 Telephone: (905) 335-2353
 Facsimile: (905) 335-1414
rmclaughlin@philipseng.com



1151 Bronte Road, Oakville, ON L6M 3L1
 905-825-6000 Toll free: 1-866-4HALTON (1-866-442-5866)
 TTY 905-827-9833
 or visit us at: www.region.halton.on.ca