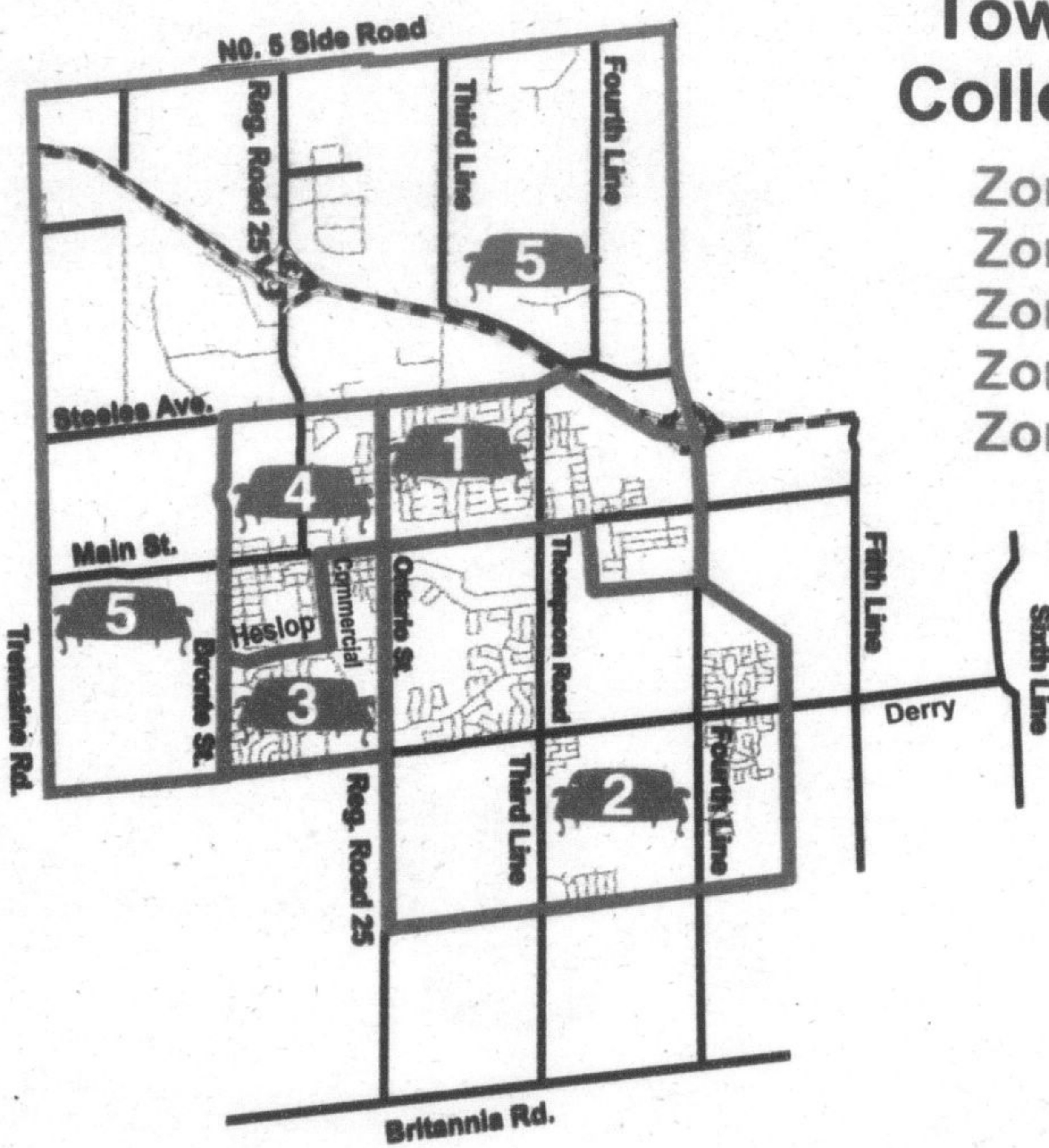


Halton Region

A Partnership That Works!

Milton Special Collection Schedule 2003



Town of Milton Collection Dates

- Zone 1 - Feb 5
- Zone 2 - Feb 12
- Zone 3 - Feb 19
- Zone 4 - Feb 26
- Zone 5 - March 5

Place items at the curb by 7:00 a.m.

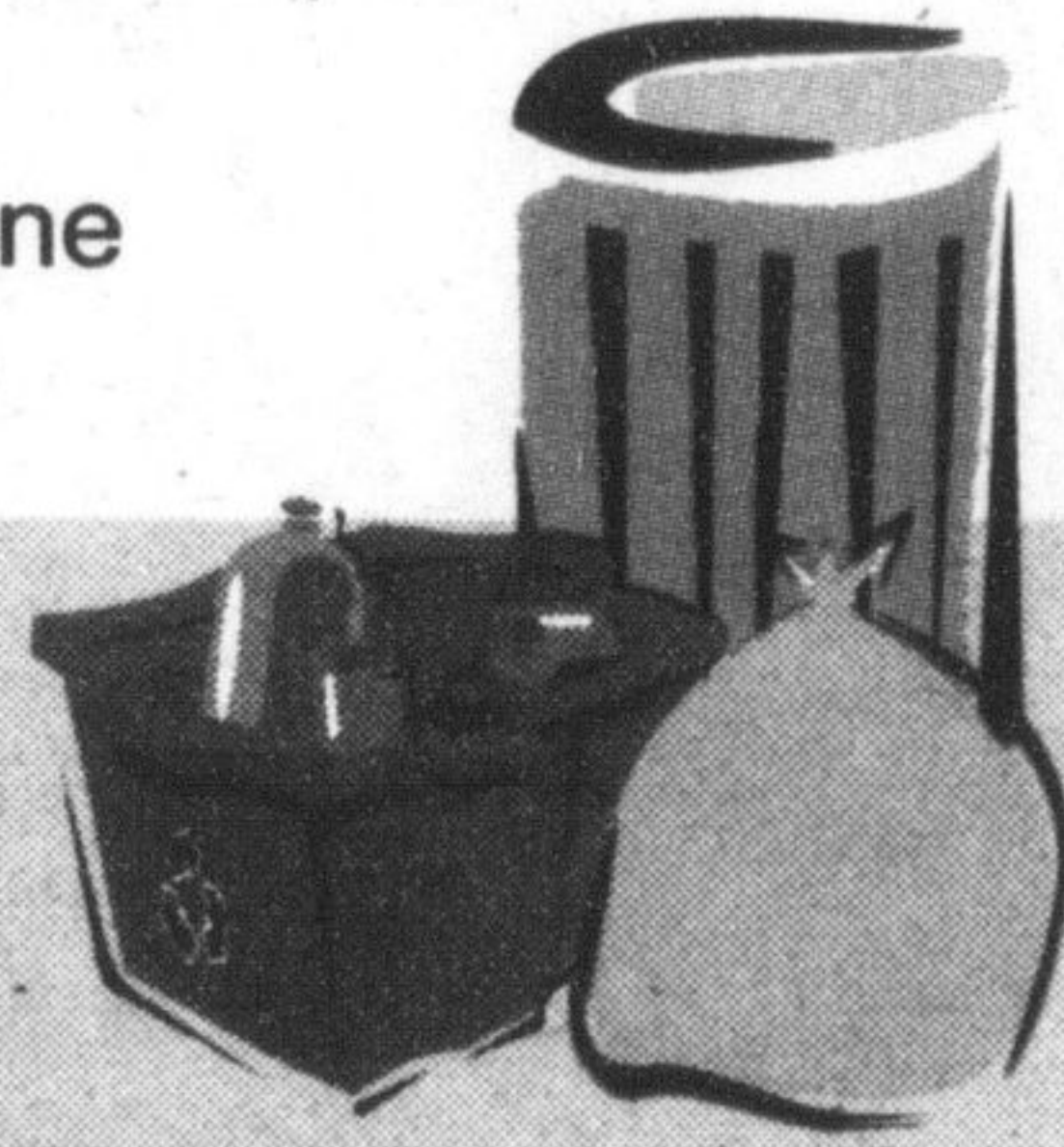
Items will be collected on the day designated for your zone.

- ✓ Acceptable Special Collection items include: household furniture, mattresses, electronic equipment, plumbing fixtures, etc.
- ✓ Remove doors from appliances for safety
- ✓ Bundle loose material such as wood in lengths no longer than 4 ft. (3 bundles max.)
- ✓ Do not pile items on top of one another
- ✓ Keep metal items apart from other material - metal is collected separately

The following materials will **not** be collected:

- | | |
|----------------------------------|--------------------|
| X Building and demolition debris | X Tree stumps |
| X Concrete and bricks | X Soil and rocks |
| X Household hazardous waste | X Automobile parts |
| X Cardboard boxes | X Tires |
| X Tree branches | X Propane Tanks |

Please note: White Goods is collected on a call in basis only. Please contact Halton Region to arrange for collection of appliances and metal items.



Halton Region— Protecting the future of our economy

In Halton, we reside along one of the world's largest trade corridors. Fostering the trade corridor's growth and protecting its future has been the focus of the Niagara Bi-National Economic Roundtable, a group comprised of public and private sector representatives from Canada and the U.S. As a member, I am pleased to advise you that the collaboration was successful in establishing new relationships, strengthening existing partnerships and producing a final report outlining specific action items.

The Bi-National Roundtable is the first step towards building a stronger cross border economy and I have no doubt that Halton businesses will realize benefits from the initiatives that have just begun. The final report is available on Halton's Web site.



Halton Regional Chairman

Meetings Scheduled for Halton Region:

- Feb. 4th 9:30 am Health and Social Services Committee
- Feb. 5th 9:30 am Planning & Public Works Committee
- 1:30 pm Administration & Finance Committee

NOTICE OF PUBLIC INFORMATION CENTRE No. 1

Steeles Avenue (Regional Road 8) Improvements Town of Halton Hills Class Environmental Assessment Study

The Regional Municipality of Halton has initiated a Class Environmental Assessment to consider a wide range of options to satisfy future travel demands on Steeles Avenue (Regional Road 8), from Trafalgar Road (Regional Road 3) easterly to Winston Churchill Boulevard (Regional Road 19), in the Town of Halton Hills. To address operational deficiencies associated with this segment of Steeles Avenue, a number of road improvement alternatives will be examined as part of the study including widening of the roadway, new road alignments and improvements to driveways & intersections, among others.

This study will be conducted in compliance with Schedule C of the Municipal Engineers Association *Municipal Class Environmental Assessment* (June 2000), which is approved under the Ontario Environmental Assessment Act. A Public Information Centre (PIC) is planned to provide further information to the public and interested stakeholders and to receive input and feedback on the study to date. The PIC is to be held:

Wednesday, February 12th, 2003
St. Stephen's Anglican Church
14996 Steeles Avenue (at 9th Line North)
Open House 5:30 - 8:00 PM/Presentation at 7:00 PM

Those attending the PIC will have an opportunity to meet the Project Team, review the study scope, and to discuss the issues related to the project including alternative solutions, environmental considerations and the preliminary list of evaluation criteria.

If you are unable to attend the PIC and require additional information, please contact:



Mr. Matt Krusto
 Project Manager
 Regional Municipality of Halton
 1151 Bronte Road
 Oakville, Ontario L6M 3L1
 Ext. 7225
 Email: krustom@region.halton.on.ca

Mr. Claudio Covelli, M.A.
 Dillon Consulting Limited
 235 Yorkland Boulevard, Suite 800
 Toronto, Ontario M2J 4Y8
 Phone: 1-416-229-4647
 Fax: 1-416-229-4692
 Email: ccovelli@dillon.ca

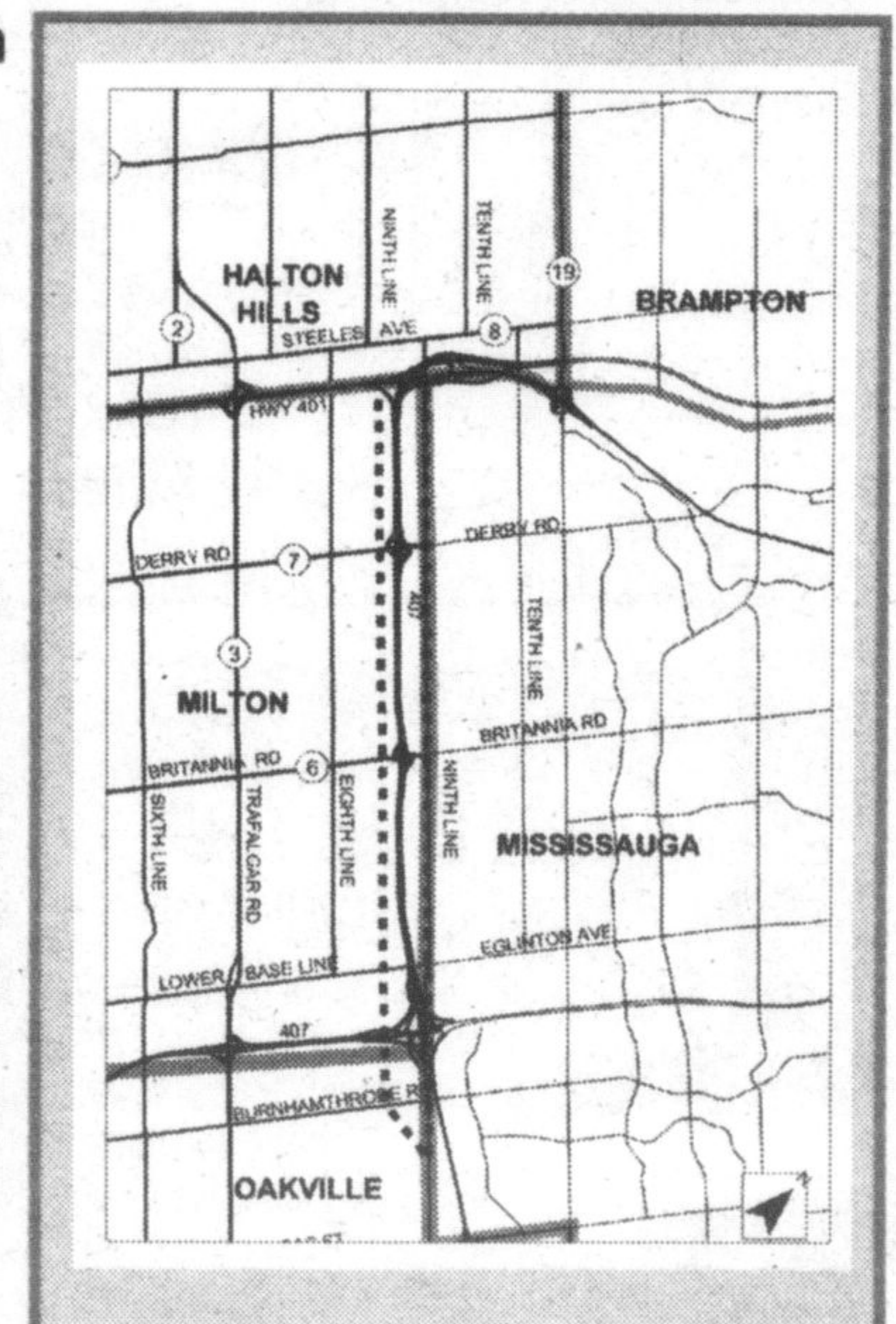
www.region.halton.on.ca/ppw/planningroads This notice issued January 31st, 2003

PUBLIC INFORMATION MEETING Ninth Line/Highway 407 Land Use Analysis Study

The Region of Halton and the Town of Milton are hosting a Public Information Meeting on

Thursday, February 6th
6:30 p.m. - 9:30 p.m.
Presentation at 7:30 p.m.
Halton Region Cafeteria
1151 Bronte Rd., Oakville

to review the recently completed "Land Use Analysis-Ninth Line/Highway 407 Corridor" report prepared by Hemson Consulting Ltd. The study area is generally bounded by the CPR line west of Highway 407, Ninth Line on the east and extends to Highway 407/401 in the north and Burnhamthorpe Rd. in the south. The meeting will provide residents with the opportunity to discuss the report's findings and recommendations with the consultant and Town of Milton and Region of Halton staff.



Halton Region
2002
 Official
 Plan
 Review

A copy of the report (Technical Background Paper # 13) is available from the Region's Official Plan web site at www.region.halton.on.ca/officialplan or by calling Isabel Telford at 905-825-6000 (ext. 7195).

Note: Access to the Region of Halton Cafeteria is from the South Parking Lot.



1151 Bronte Road, Oakville, ON L6M 3L1
 905-825-6000 Toll free: 1-866-4HALTON (1-866-442-5866)
 TTY 905-827-9833
 or visit us at: www.region.halton.on.ca