

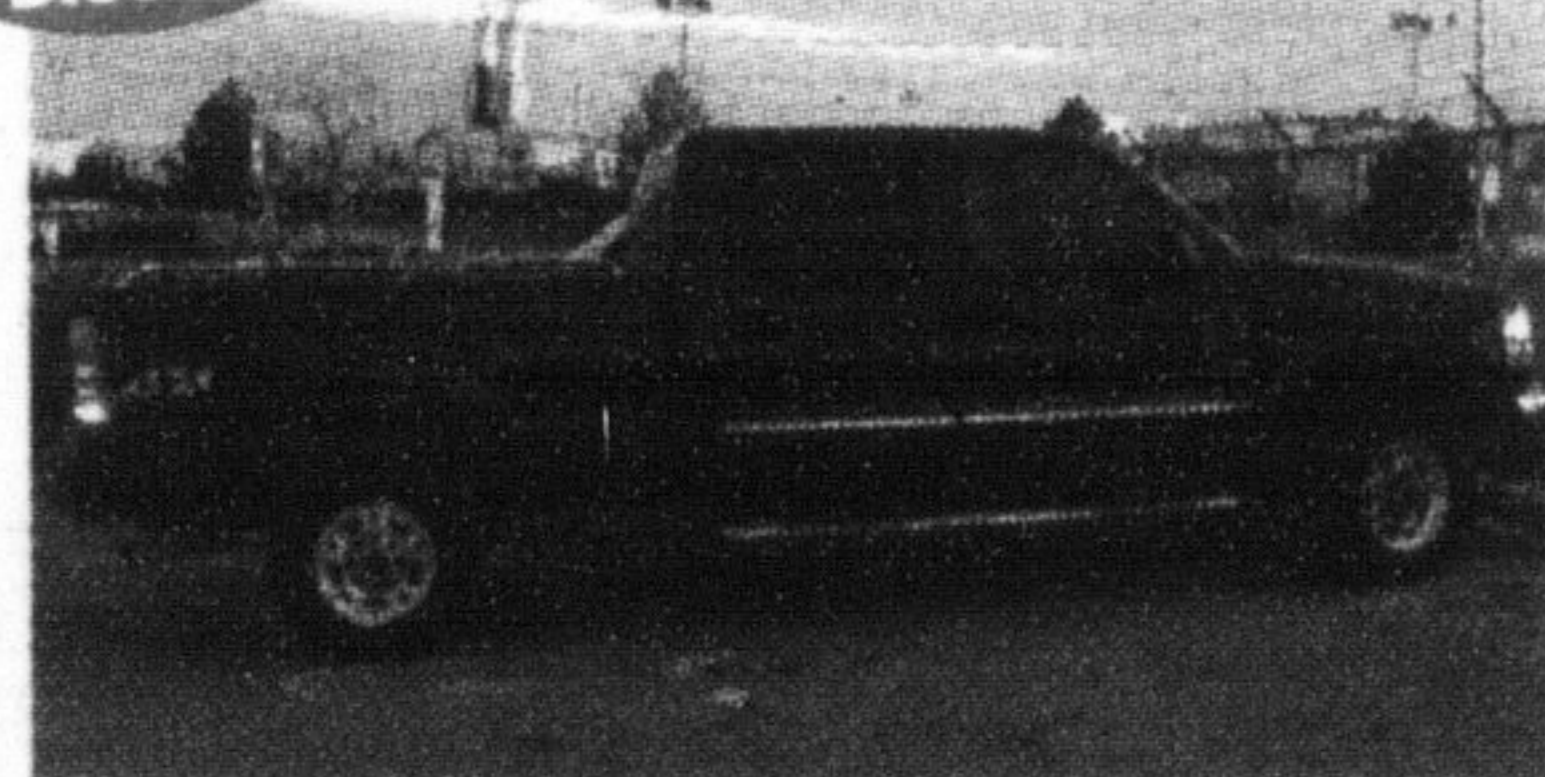
# PARKWAY AUTO-TRADE

Financing, Warranties & Leasing Available  
**905-875-4925**

BE AN INFORMED BUYER!

SHOP & COMPARE SALE PRICES!!

Duramax Diesel



### 2003 GMC Sierra SLT 2500 HD Crew-Cab 4x4 Duramax Diesel

In stock, no waiting. Fully loaded. Including leather heated seats, boxliner, chrome rails. Remainder of Full GMC Fact. Warr. 5,500 km.

LEASE FOR **\$5000 down/\$659 mth** PLUS TAXES

Manager's Special ... Call for more info!

Turbo Diesel 4x4



### 2000 Dodge Ram 2500 SLT+ Ext. Cab

Cummins Turbo Diesel, 4x4, short box. Fully loaded, incl. leather seats, 5th wheel harness.

DON'T DELAY! \$27,998

2500 4x4



### 1999 Dodge Ram 2500 SLT - Laramie Ext Cab

4x4, V8, short box, pw, pdl, tilt, cruise, A/C, ABS, boxliner. 119,000 km. (pic. not exactly as shown)

SALE PRICE \$20,998

14,000 kms



### 2001 GMC Sierra SL Reg. Cab

4.8L V8, vortec, ISB pack, blue/grey cloth, ps, pb, A/C, ABS, tilt, boxliner, 60-40 split bench.

SALE PRICE \$21,998

P.Sunroof 4x4



### 1998 GMC Jimmy SLT

4x4, 4dr, auto, white/silver two tone, blk leather inter. Very sharp, loaded, leather, p.sunroof, CD, 91,000 kms.

SALE PRICE \$15,998

23,000 kms



### 2001 GMC Sierra SL Reg. Cab

4.8L V8, vortec, ISB pack, white/grey cloth, ps, pb, A/C, tilt, boxliner, ABS, 60-40 split bench.

SALE PRICE \$20,498

36,000 kms



### 2001 GMC Sierra SL Reg. Cab

4.8L V8, vortec, ISB pack, white/grey cloth, ps, pb, A/C, ABS, tilt, boxliner, back rack, alloy wheels

DOOR CRASHER PRICE \$18,998

47,000 kms



### 1998 Ford F-150 XL Reg Cab

Auto, 4.2L V6, short box, red/grey, ps, pb, step rails, custom cab, A/C, ABS.

SALE PRICE \$13,998

4x4



### 2000 Ford F-150 XL 4x4 Reg Cab

Auto, V8, ps, pb, A/C, ABS, 63,000 kms.

SALE PRICE \$17,998

4x4



### 1995 Chevy 1500 Silverado - Flare Side

V8-4x4, black/tan int., pw, pdl, C/D, A/C, console, rear cargo cover. Excellent condition. 123,000 kms.

SALE PRICE \$12,998

XTREME 31,000 kms



### 2001 Chevy S10 Xtreme, Extended Cab

4.3L vortec, indigo blue/charcoal inter. Very sharp! ps, pb, tilt, cruise, C/D, A/C, ABS, alloy wheels, fog lamps.

SUPER SAVINGS @ \$18,998

GRAND 81,000 kms



### 1999 Plymouth Grand Voyager

V6, 7 pass., cranberry metallic, pw, pdl, tilt, cruise, A/C, ABS.

SALE PRICE \$12,998

4x4 49,000 kms



### 2000 Jeep TJ Sport

V6, 5spd, indigo blue, 2 tops, fog lights, sound bar, alloy wheels.

SALE PRICE \$19,598

Great Deal!



### 1998 Chevy Venture LS

6 cyl. 3dr, auto, pw, pdl, tilt, cruise, A/C, 113,000 km.

SALE PRICE \$9,998

TV/VCR



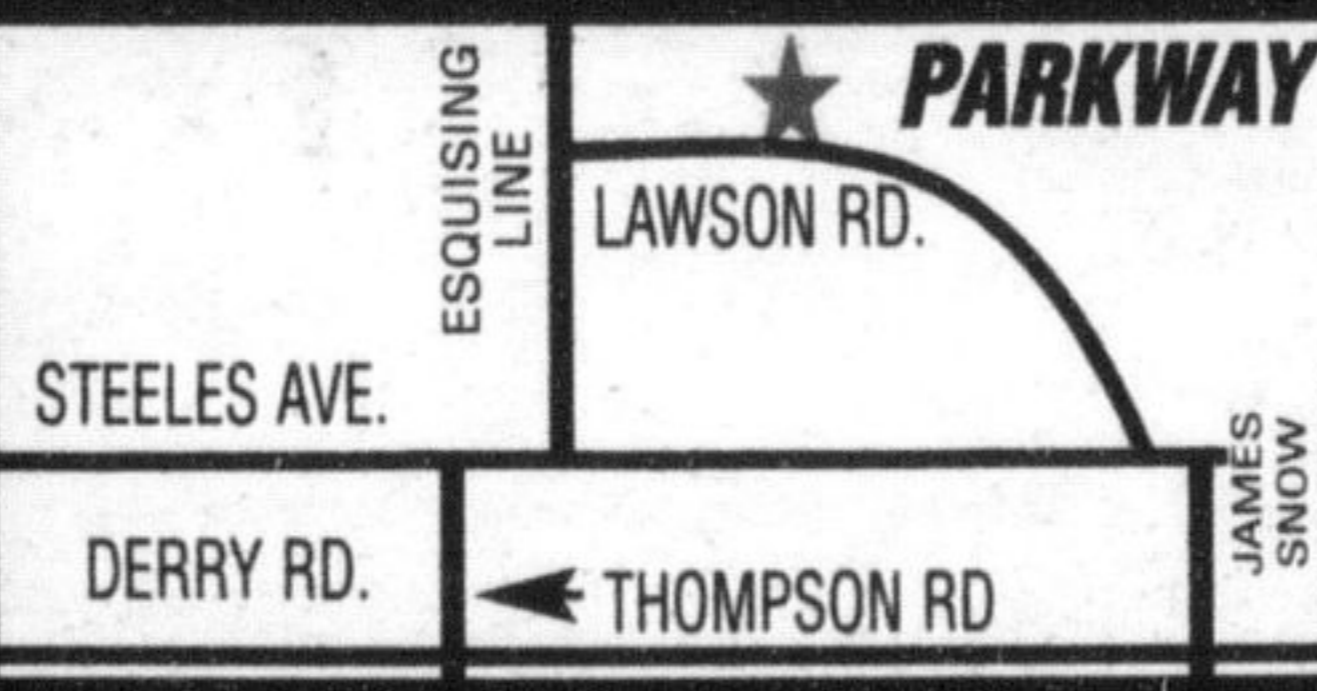
### 1999 Olds Silhouette Premium

4dr, auto, 47,000 kms, leather, quads, pd, TV/VCR. Loaded.

REDUCED TO \$19,998

All financing O.A.C., taxes & adm. licensing included in monthly payments. See your dealer for financing details.

8215 Lawson Rd. Milton  
**905-875-4925**  
www.parkwayautotrader.ca



# Dateline

• from DATELINE on page 29 7781.

**Calling New Parents**, a free program for parents and babies aged 6 months and younger, meets with a public health nurse to discuss parenting and infant care. The group meets at the Milton Community Resource Centre, 917 Nipissing Rd., from 1:30 to 3:30 p.m. For information, call (905) 693-4242, ext. 7899.

Improve communication and leadership skills with the **Milton Toastmasters**. Everyone is welcome to attend the meeting at the Royal Canadian Legion, 21 Charles St. (upper level), at 7:30 p.m. For information, call Sue at (905) 876-2563.

**Help for Parents**, a parent support group, meets at Pinelands Presbyterian Church, 5270 New St., in Burlington at 7:30 p.m. This non-denominational self-support

group helps parents of children who are in trouble at home, at school or with the law or who are abusive or taking drugs. For information, call Sean at (905) 842-1729.

The Peel North branch of the **Retired Women Teachers of Ontario** meets at Emmanuel United Church, 420 Balmoral Dr., in Bramalea at 10:30 a.m. All retired women teachers are welcome to attend the meeting. For information, call (905) 796-2146.

The **Milton Chamber of Commerce** holds its annual general meeting at 251 Main St. from 5 to 7 p.m. All members are welcome to attend the meeting to meet the new board of directors.

Wednesday Dec. 11

The Milton Seniors' Activity Centre, 500 Childs Dr., holds the **Hot Lunch Program** from 11:30

a.m. to 12:45 p.m. Lunch costs \$5 and includes an entree, salad, dessert and a beverage. To sign up or for information, call (905) 875-1681.

The Milton Seniors' Activity Centre, 500 Childs Dr., holds an evening **Euchre** party at 7:30 p.m. The competition costs \$2. For information, call (905) 875-1681.

**Mom's Morning Out** meets at St. Paul's United Church, 123 Main St., from 9:30 to 11 a.m. Caregivers find friendship, support and guidance while children are cared for in Graham Hall. For information, call Natasha at (905) 878-5841, Sherry at (905) 878-5976 or Linda at (905) 876-3659.

The **Milton Knitters** meet in the Community Room (upstairs in Loblaw's) from 7 to 9 p.m. For information, call Anne at (905) 878-7990.

## GO THROUGH SLEET, ICE AND SNOW - GET BLIZZAK DURING THE BRIDGESTONE SNOW TIRE SWITCH!

LIMITED TIME ONLY!

Have your summer tires switched over for a set of Blizzak winter tires from Bridgestone. Blizzak is THE requested name by winter tire buyers.

**BRIDGESTONE**  
A GRIP ON THE FUTURE

ICE AHEAD GET READY



### BLIZZAK WS-50™ With UNI-T®

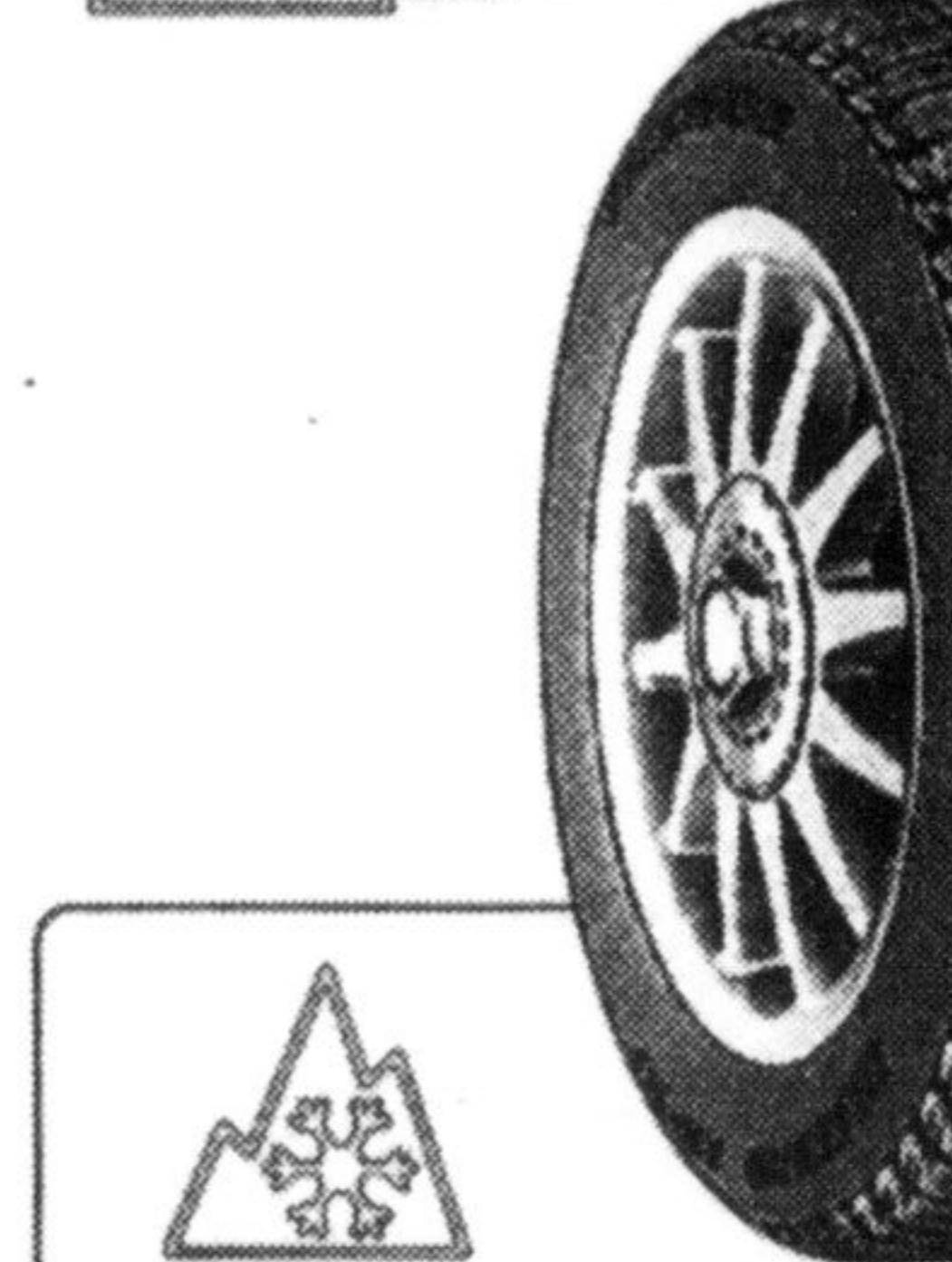
The Winterbiter™

- Multicell Compound for snow and ice performance without studs.
- UNI-T technology improves snow traction and braking.

### BLIZZAK LM-22™ With UNI-T®

The BLIZZAK For High-Performance Sedans

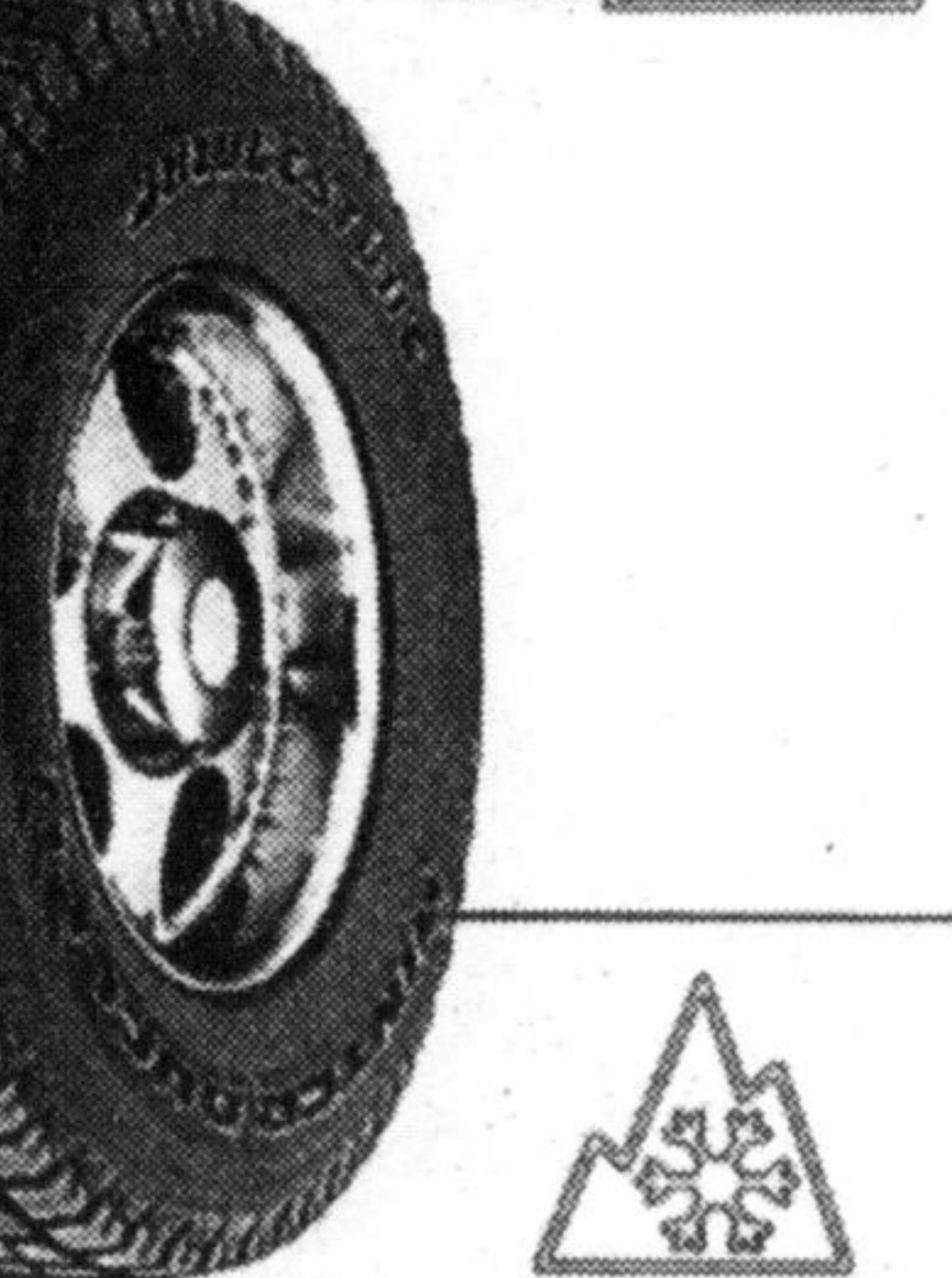
- Provides well-balanced overall performance both in winter and wet or dry conditions.
- For performance touring sedans



### BLIZZAK LM-18™ With UNI-T®

The BLIZZAK for High-Performance Coupes

- A high silica content tread compound enhances both in winter and wet performance.
- For performance touring coupes.



### BLIZZAK WINTER DUELER™ With UNI-T®

The BLIZZAK for Light Trucks and SUVs™

- Delivers superior winter traction and road stability.
- Unique Multicell® compound improves ice performance

## BLIZZAK YOUR WINTER TIRE HEADQUARTERS



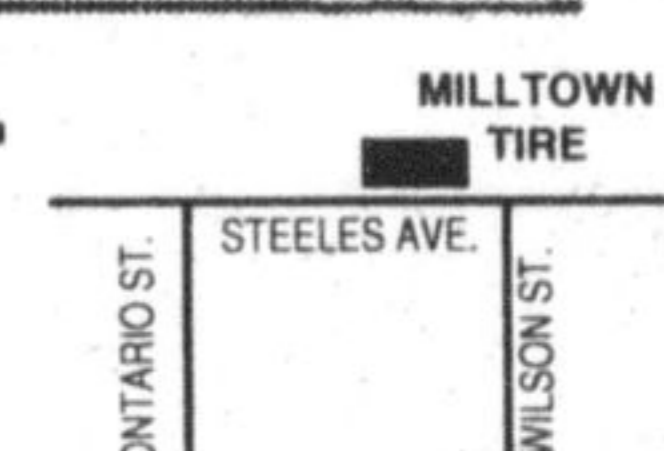
Ultimate Tire Technology  
UNI-T® IS THE DIFFERENCE

UNI-T, the Ultimate Network of Intelligent Tire Technology, delivers superior wet stopping performance without sacrificing dry or snow performance.



**Milltown Tire Service Ltd.**

Milltown Tire Service Ltd.  
675 Steeles Ave. E., Milton  
905-878-6785



Meets the severe snow service requirements of the Rubber Manufacturers Association (RMA) and the Rubber Association of Canada. (RAC).